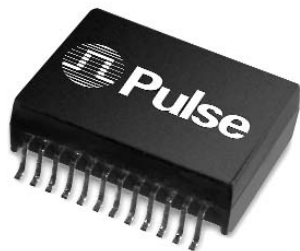






10/100BASE-TX DUAL-PORT TRANSFORMER MODULES

Military / Aerospace Grade



-  Compliant with IEEE 802.3u and ANSI X3.263 standards
-  350μH OCL with 8mA bias
-  Operating and storage temperature:
 - 100B-2002:** -40°C to +85°C
 - 100B-2002X:** -55°C to +125°C
-  IC grade transfer-molded package withstands 235°C peak temperature profile

Electrical Specifications @ 25°C

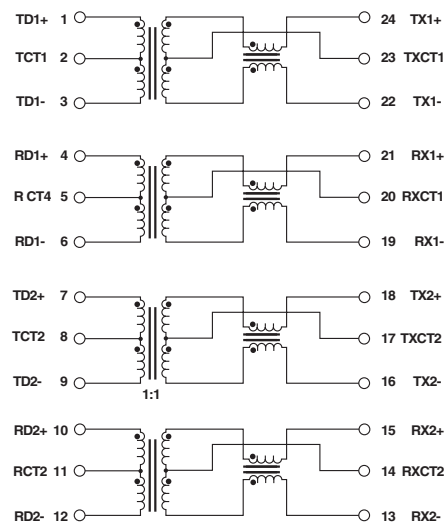
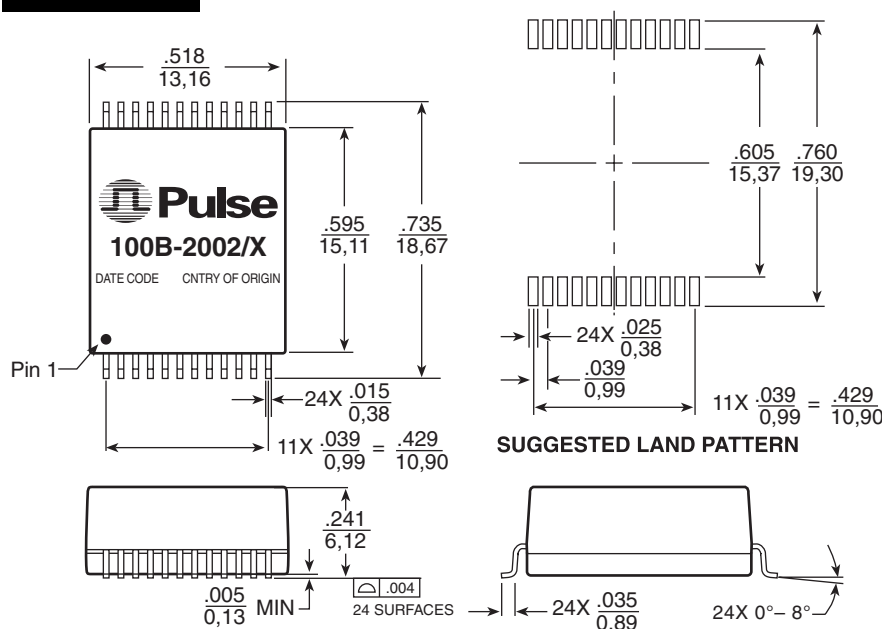
| Part Number | Insertion Loss (dB MIN) | Return Loss (dB MAX) | | | | | Crosstalk (dB TYP) | | | | DM to CM Rejection Ratio (dB MAX) | | |
|-------------|-------------------------|----------------------|----------|--------|--------|-----------|--------------------|--------|--------|---------|-----------------------------------|-----------|------------|
| | | 0.1-100 MHz | 2-30 MHz | 40 MHz | 50 MHz | 60-80 MHz | 1 MHz | 30 MHz | 60 MHz | 100 MHz | 1-30 MHz | 30-60 MHz | 60-100 MHz |
| 100B-2002 | -1.20 | -18 | -16 | -15 | -12 | -50 | -43 | -37 | -33 | -43 | -37 | -33 | |
| 100B-2002X | -1.20 | -18 | -16 | -15 | -12 | -50 | -43 | -37 | -33 | -43 | -37 | -33 | |

NOTE: Optional Tape & Reel packaging can be ordered by adding a "T" suffix to the part number (i.e. 100B-2002 becomes 100B-2002T). Pulse complies to industry standard tape and reel specification EIA481.

Mechanical

Schematic

100B-2002/X



Weight30 grams
Tape and Reel300/reel
Pan Tube25/tube

Dimensions: $\frac{\text{Inches}}{\text{mm}}$ Unless otherwise specified, all tolerances are $\pm \frac{.010}{0.25}$

For More Information:

Pulse Worldwide Headquarters

2 Pearl Buck Court
Bristol, PA 19007
U.S.A.

www.pulseeng.com

Tel: 215 781 6400
Fax: 215 781 6403

Pulse Europe

Einsteinstrasse 1
D-71083 Herrenberg
Germany

Tel: 49 7032 7806 0
Fax: 49 7032 7806 12

Pulse China Headquarters

B402, Shenzhen
Tech-Innovation International
Tenth Kejianan Rd.
High-Tech Industrial Park
Nanshan District, Shenzhen
China

Tel: 86 755 33966678
Fax: 86 755 33966700

Pulse North China

Room 1503
XinYin Building
No. 888 YiShan Rd.
Shanghai 200233
China

Tel: 86 21 54643211/2
Fax: 86 21 54643210

Pulse South Asia

150 Kampong Ampat
#07-01/02
KA Centre
Singapore 368324

Tel: 65 6287 8998
Fax: 65 6280 0080

Pulse North Asia

No. 26
Kao Ching Rd.
Yang Mei Chen
Tao Yuan Hsien
Taiwan, R. O. C.

Tel: 886 3 4641811
Fax: 886 3 4641911

Performance warranty of products offered on this data sheet is limited to the parameters specified. Data is subject to change without notice. Other brand and product names mentioned herein may be trademarks or registered trademarks of their respective owners. © Copyright, 2007. Pulse Engineering, Inc. All rights reserved.

www.pulseeng.com

M110.A (8/07)