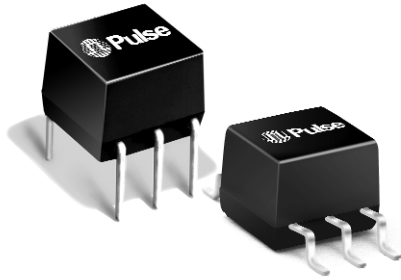


RF TRANSFORMERS

Surface Mount and Through Hole



- Operating bandwidth of .08 MHz to 400 Mhz
- Peak IR reflow temperature rating of 235°C
- Excellent insertion loss and return loss
- Various impedance ratios available

Electrical Specifications @ 25°C — Operating Temperature -40°C to +85°C

Part Number	Impedance Ratio ¹ (Pri:Sec)	Turns Ratio ¹ (Pri:Sec)	Bandwidth ² (3 dB, MHz)	Schematic	Primary Pins
SURFACE MOUNT					
CX2050	1:1	1:1	.15-400	A	4-6
CX2052	1:1CT	1:1CT	.08-200	B	4-6
CX2054	1:4CT	1:2CT	.20-350	B	4-6
CX2059	1:9	1:3	.15-200	A	4-6
THROUGH HOLE					
CX2060	1:1	1:1	.15-400	A	4-6
CX2062	1:1CT	1:1CT	.08-200	B	4-6
CX2064	1:4CT	1:2CT	.20-350	B	4-6
CX2065	1:4CT	1:2CT	.02-250	B	4-6
CX2068	1:12.25	1:3.5	.20-150	C	1-3

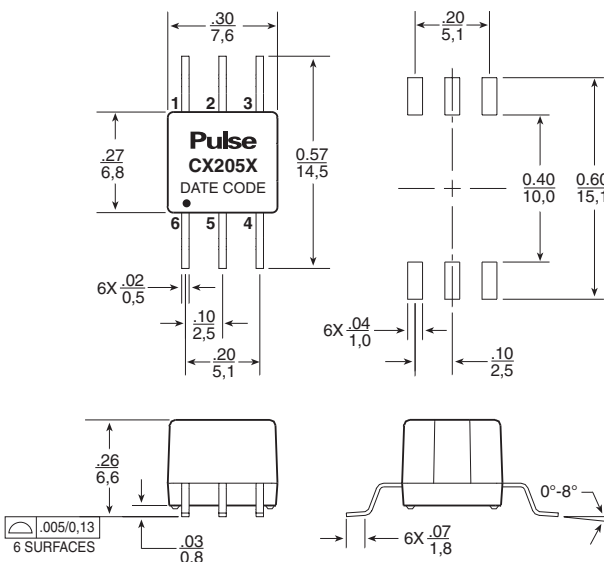
NOTE: Optional Tape & Reel packaging can be ordered by adding a "T" suffix to the surface mount part numbers (ex: CX2050T).
Bandwidth is referenced to midband loss.

Mechanicals

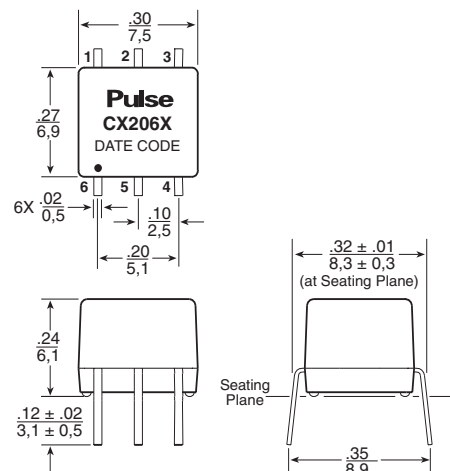
Schematics

STRA

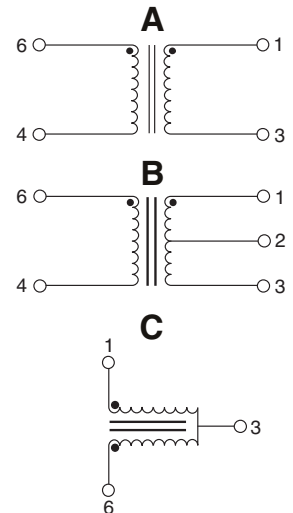
Surface Mount



Through Hole



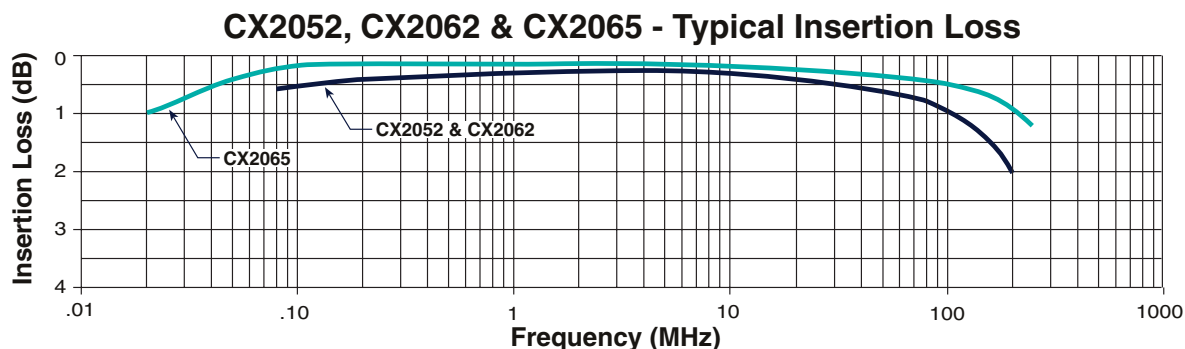
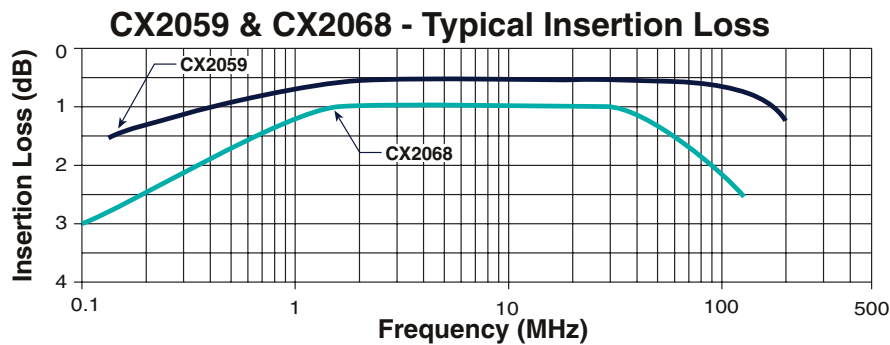
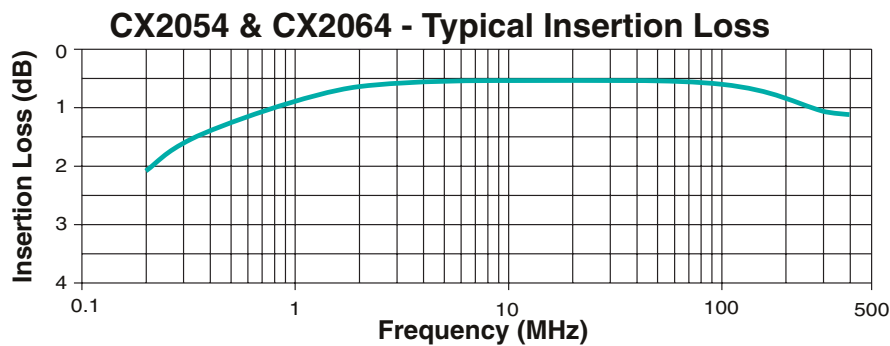
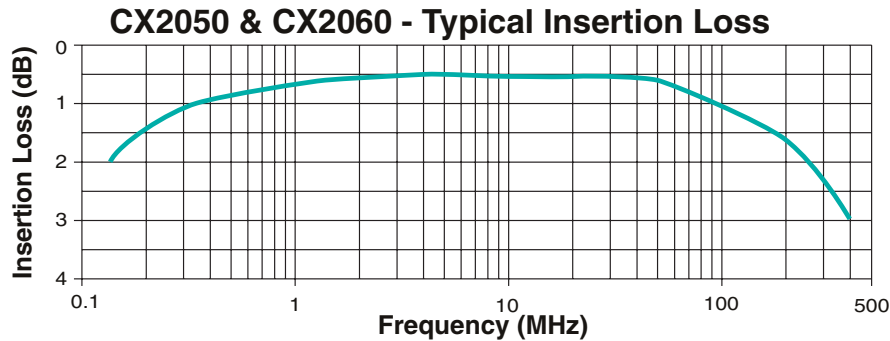
Dimensions: Inches
mm
Unless otherwise specified,
all tolerances are ± .010
0,25



RF Power025 watts
Absolute DC Current30 mA
Weight0.6 grams
Tape & Reel475/reel
Tube65/tube

RF TRANSFORMERS

Surface Mount and Through Hole



Application Notes

- A. Bandwidth specifications are for a 75 Ω system.
- B. Materials used in the products are UL94-V0 recognized. Products meet the requirements of IEC 695-2-2 (Needle Flame Test).

Notes from Tables

- 1. Impedance and turns ratios are specified primary:secondary. (CT=Center Tap).
- 2. Bandwidth is referenced to midband loss.
- 3. The insertion loss of these transformers is verified from -40°C to +85°C. Contact Pulse Applications Engineering for extended temperature performance data.
- 4. Return loss performance changes with change in temperature.

For More Information :

UNITED STATES (Worldwide)	UNITED KINGDOM (Northern Europe)	FRANCE (Southern Europe)	SINGAPORE (Southern Asia)	TAIWAN, R.O.C. (Northern Asia)	HONG KONG (China/Hong Kong)	DISTRIBUTOR
12220 World Trade Drive San Diego, CA 92128 U.S.A. http://www.pulseeng.com TEL: 858 674 8100 FAX: 858 674 8262	1 & 2 Huxley Road The Surrey Research Park Guildford, Surrey GU2 5RE United Kingdom TEL: 44 1483 401700 FAX: 44 1483 401701	Zone Industrielle F-39270 Orgelet France TEL: 33 3 84 35 04 04 FAX: 33 3 84 25 46 41	150 Kampong Ampat #07-01/02 KA Centre Singapore 368324 TEL: 65 6287 8998 FAX: 65 6280 0080	3F-4, No. 81, Sec. 1 HsinTai Wu Road Hsi-Chih, Taipei Hsien Taiwan, R.O.C. Tel: 886 2 2698 0228 FAX: 886 2 2698 0948	9/F, Phase 2, Tai Sang Shatin Warehouse Centre 6 Wong Chuk Yeung Street Fotan, Shatin, Hong Kong TEL: 852 2788 6588 FAX: 852 2776 1055	

Performance warranty of products offered on this data sheet is limited to the parameters specified. Data is subject to change without notice. Other brand and product names mentioned herein may be products and/or registered trademarks of their respective owners.

Printed on recycled paper. ©2003, Pulse Engineering, Inc. All Rights Reserved.

C206.A (10/03)