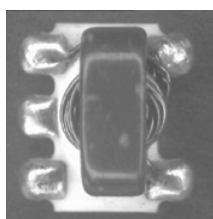


E-Series RF 1:4 Flux Coupled Step-up Transformer 1-350 MHz



Features

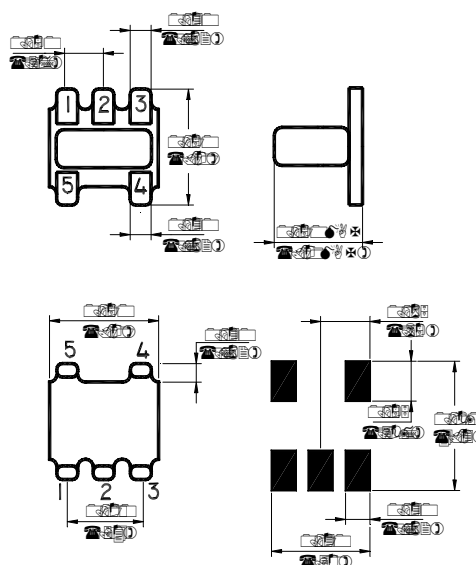
- Surface Mount
- 1:4 Impedance Ratio
- CT on Secondary
- Available on Tape & Reel



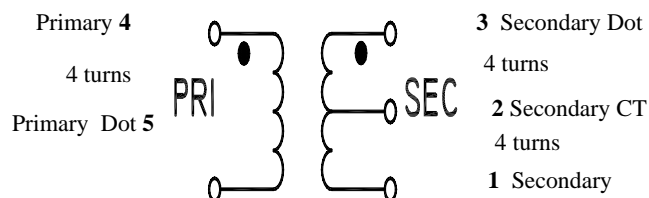
Description

M/A-COM's ETC4-1 is a 1:4 RF flux coupled step-up transformer in a low cost, surface mount package. Ideally suited for high volume cellular and wireless applications.

SM-22 Package



Schematic



Electrical Specifications @25°C

| Parameter | Units | Nominal | Maximum | Mean (x) | Sigma (σ) |
|--------------------------------|-------------|---------|---------|----------|--------------------|
| Frequency Range 1-350 | MHz | — | — | — | — |
| Insertion Loss ($f_L - f_U$) | 5 - 100 MHz | — | 1.0 | — | — |
| | 2 - 300 MHz | — | 2.0 | 1.21 | 0.032 |
| | 1 - 350 MHz | — | 3.0 | — | — |
| Amplitude Unbalance | 5 - 100 MHz | — | 0.1 | — | — |
| | 1 - 350 MHz | — | 0.5 | — | — |
| Phase Unbalance | 5 - 100 MHz | — | 1.0 | — | — |
| | 1 - 350 MHz | — | 5.0 | — | — |

Please Note that the photograph above indicates typical package only, not actual unit.

S 0180 H

ADVANCED: Data Sheets contain information regarding a product M/A-COM Technology Solutions is considering for development. Performance is based on target specifications, simulated results, and/or prototype measurements. Commitment to develop is not guaranteed.

PRELIMINARY: Data Sheets contain information regarding a product M/A-COM Technology Solutions has under development. Performance is based on engineering tests. Specifications are typical. Mechanical outline has been fixed. Engineering samples and/or test data may be available. Commitment to produce in volume is not guaranteed.

• **North America** Tel: 800.366.2266 • **Europe** Tel: +353.21.244.6400
• **India** Tel: +91.80.4155721 • **China** Tel: +86.21.2407.1588

Visit www.macomtech.com for additional data sheets and product information.

M/A-COM Technology Solutions Inc. and its affiliates reserve the right to make

Absolute Maximum Ratings

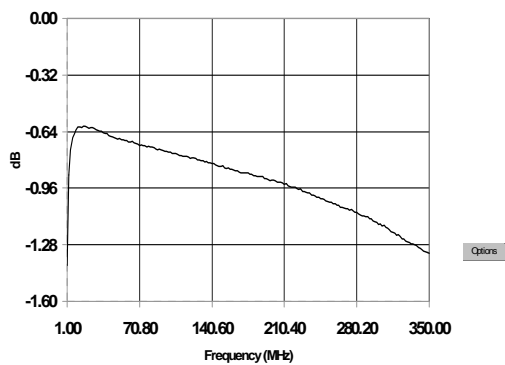
| Parameter | Absolute Maximum |
|-----------------------|------------------|
| RF Power | 250 mW |
| DC Current | 30 mA |
| Operating Temperature | -20°C to +85°C |
| Storage Temperature | -20°C to +85°C |

Functional Configuration

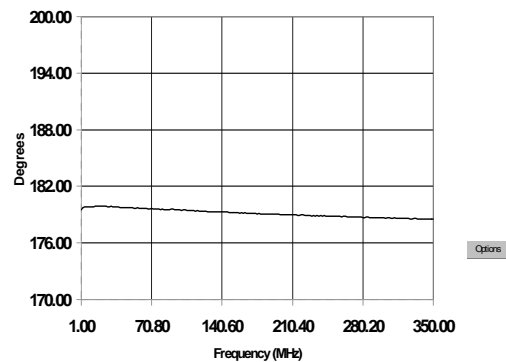
| Function | Pin No. |
|---------------|---------|
| Secondary | 1 |
| Secondary CT | 2 |
| Secondary Dot | 3 |
| Primary Dot | 5 |
| Primary | 4 |

Typical Performance @ 25°C

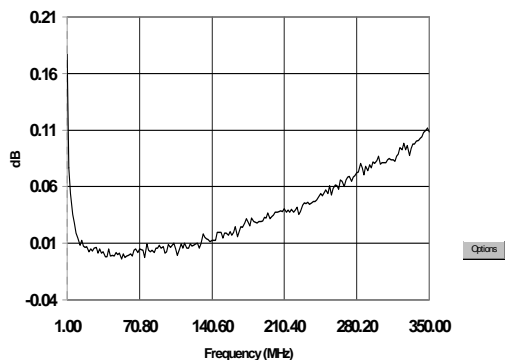
Insertion Loss



Phase Unbalance



Amplitude Unbalance



S 0180 H

ADVANCED: Data Sheets contain information regarding a product M/A-COM Technology Solutions is considering for development. Performance is based on target specifications, simulated results, and/or prototype measurements. Commitment to develop is not guaranteed.

PRELIMINARY: Data Sheets contain information regarding a product M/A-COM Technology Solutions has under development. Performance is based on engineering tests. Specifications are typical. Mechanical outline has been fixed. Engineering samples and/or test data may be available. Commitment to produce in volume is not guaranteed.

• **North America** Tel: 800.366.2266 • **Europe** Tel: +353.21.244.6400
 • **India** Tel: +91.80.4155721 • **China** Tel: +86.21.2407.1588

Visit www.macomtech.com for additional data sheets and product information.

M/A-COM Technology Solutions Inc. and its affiliates reserve the right to make