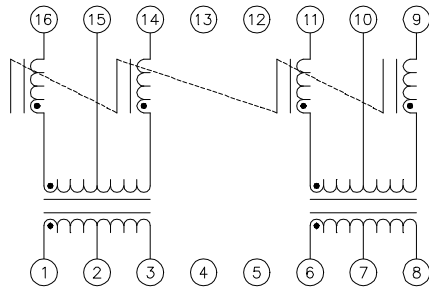
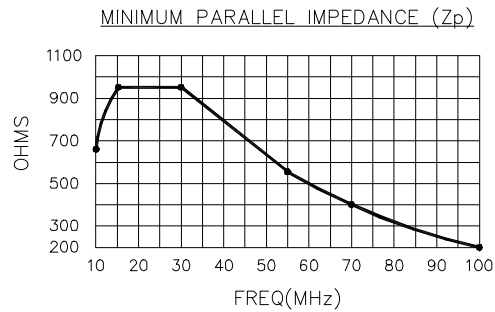


## Electrical



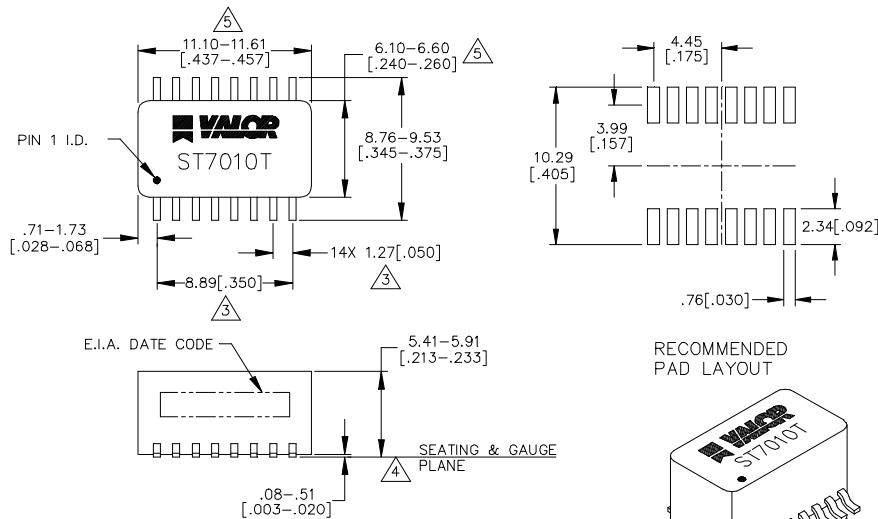
SCHMATIC



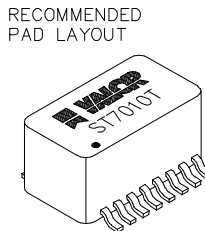
**ELECTRICAL SPECIFICATIONS @ 25°C**

TURNS RATIO (1-2-3 TO 16-15-14) TURNS RATIO (6-7-8 TO 11-10-9) PHASING OCL (1 - 3) OCL (6 - 8) OCL (COMMON MODE INDUCTOR) (15 TO 14 AND 16 SHORTED) LL (9-11, SHORT 6-8) LL (1-3 SHORT 14-16) Cww (1-3 TO 14-16 AND 6-8 TO 9-11) DCR (1-3, 14-16, 6-8 AND 9-11) HIPOT (1-3 TO 14-16 AND 9-11 TO 6-8) Zp (COMMON MODE INDUCTOR): (14 AND 16 SHORTED) TO 15, OR (9 AND 11 SHORTED) TO 10	: 1CT : 1CT ± 5% : 1CT : 1.41CT ± 5% : 1, 16 AND 11, 6 IN-PHASE : 175μH MIN @ 10mV, 10KHz : 80μH MIN @ 10mV, 10KHz : 18-45μH @ .008VRMS MAX, 100KHz : 0.55μH MAX @ 1MHz MIN : 0.40μH MAX @ 1MHz MIN : 20pF MAX : 0.9Ω MAX : 2000VRMS : PER GRAPH
--	---

## Mechanical



- △ DIMENSIONS NOT TO INCLUDE MAXIMUM FLASH .25[.010].
  - △ COPLANARITY: .10[.004]
  - △ LEADS WITHIN .13[.005] RADIUS OF TRUE POSITION AT GAUGE PLANE WITH MAXIMUM MATERIAL CONDITION AND UNIT INSTALLED.
  - 2. LEAD: SOLDERABILITY PER MIL-STD-202, METHOD 208.
  - △ PACKAGE: THERMOSET, MOLDED, BLACK, SELF-EXTINGUISHING PER UL94V-0.
- NOTES: UNLESS OTHERWISE SPECIFIED



WEBSITE [www.valorinc.com](http://www.valorinc.com) E-MAIL [marketing@valorinc.com](mailto:marketing@valorinc.com)

**NORTH AMERICA**  
tel 1-800-31 VALOR  
fax 619-537-2525

**ASIA/PACIFIC**  
tel +852-2953-1000  
fax +852-2953-1333

**EUROPE**  
tel +44-1727-824 875  
fax +44-1727-824 898