

# 7334L2622F05001LF

Lead Free Version (optional)

Plating : contact area  
 2: 0.4 µm Gold  
 5: 2.0 µm Gold

Number of contacts :  
 2: 8 contacts ISO  
 3: 16 contacts ISO + AFNOR

**GENERAL:**  
 This L26 connector uses a "sliding" contact technology suitable for most applications.  
 It has been designed for easy mounting on the PCB.

**ELECTRICAL PROPERTIES:**  
 Insulation resistance : 5000 MΩ min  
 Dielectric withstanding : 750 Vrms min  
 Current carrying capacity : 10µA min. 1A max  
 Contact resistance : 100mΩ max  
 Card sensor type : Normally closed

**MECHANICAL PROPERTIES:**  
 Contact Normal force : 0.6 N max (EMV Standard)  
 Insertion force : 10 N max  
 Extraction force : 1 N min  
 Durability : 10000 card insertions with 0.4µm Gold  
 According to UTE C93-421

**MATERIAL:**  
 Housing : PBT 30 % Glass Filled, Colour Black, Rated UL94V0  
 Contacts and switch : Phosphor bronze  
 Plating : Nickel all over with 3µm mini on contact area  
 Gold on contact area : see catalogue part number key  
 Tin/Lead 3 µm mini on soldertails  
**FOR LEAD FREE PLATING :**  
 Matte Tin 3µm mini on solder tail in place of Tin/Lead  
 Bare edge allowed

**ENVIRONMENT:**  
 Operating temperature: -20°C / +70°C  
 Storage temperature: -40°C / +85°C  
 Printed Circuit Board thickness : 1.6mm

**PACKING:**  
 Tray packing - 25 cnrs/tray  
 - 1000 cnrs/box

**REFERENCE DOCUMENTS:**  
 Product specification VGN 11596

**LEAD FREE VERSION:**

"This product meets European Union Directives and other country regulations as described in GS-22-008"

The housing will withstand exposure to 260°C peak temperature for 10seconds in a wave solder application with a 1.6mm minimum thick circuit board

A

B

C

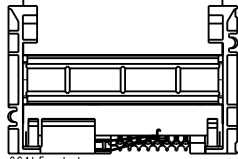
D

A

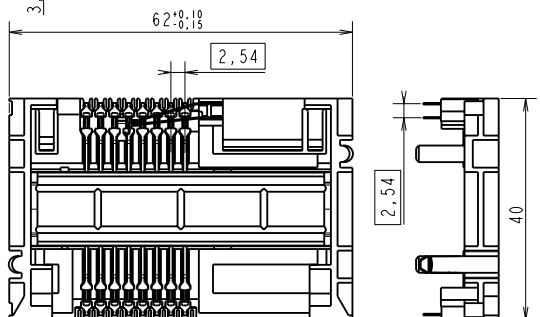
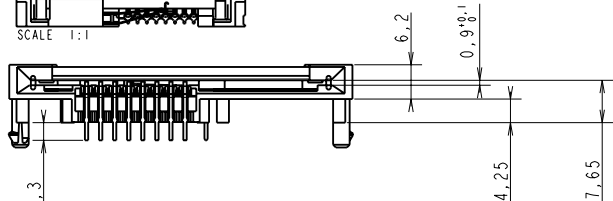
B

C

D



SCALE 1:1



General Tolerances: ± 0.2 mm

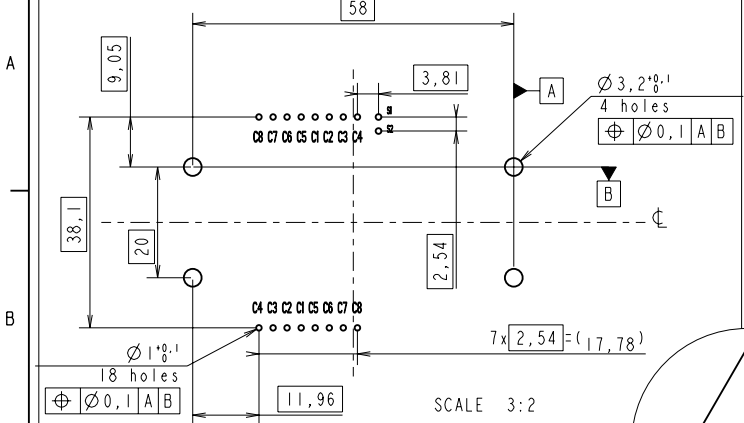
rev	ecn no	dr	date
A	105-0155	NT	'05/08/10
B	106-0084	SSC	'06/06/21
-	-	-	-
-	-	-	-
-	-	-	-
-	-	-	-

www.fciconnect.com		surface	tolerance std	projection	mm
		ISO 1302	ISO 406 ISO 1101	⊕	←→
		TOLERANCES UNLESS OTHERWISE SPECIFIED			
Dr	N. TWINCY	'05/08/10	ANGULAR	LINEAR	size A3
Eng	DILIP THOMAS	'05/08/10	0.X	±	Scale 3:2
Chr	DILIP THOMAS	'06/06/21	0.XX	±	ECN 106-0084
Appr	K. V. SIVADAS	'06/06/21	0.XXX	±	Spec ref SEE NOTES
Title		Product family		5S2F	Rev. B
L26 TYPE F05		L26 TYPE F05		dwg no	7334L2622F05001
catalog no		SEE TABLE	CUSTOMER	sheet 1 of 2	

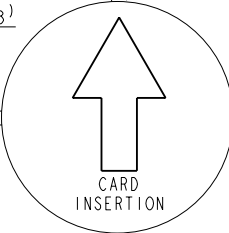
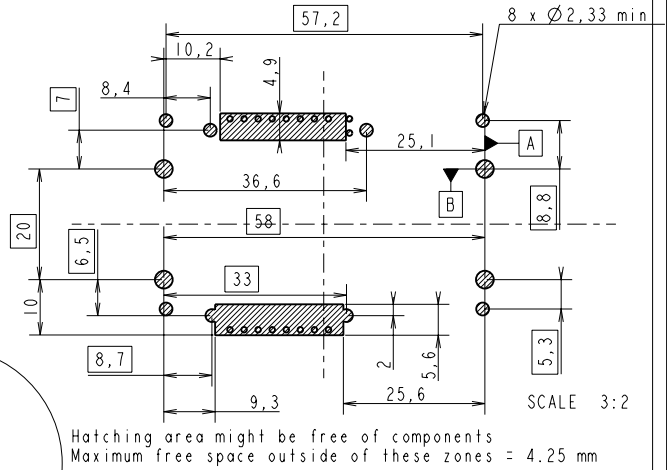
Copyright FCI

REV. 1 - 2006-01-11

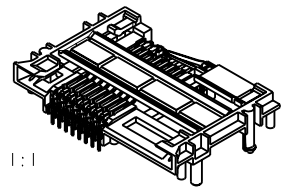
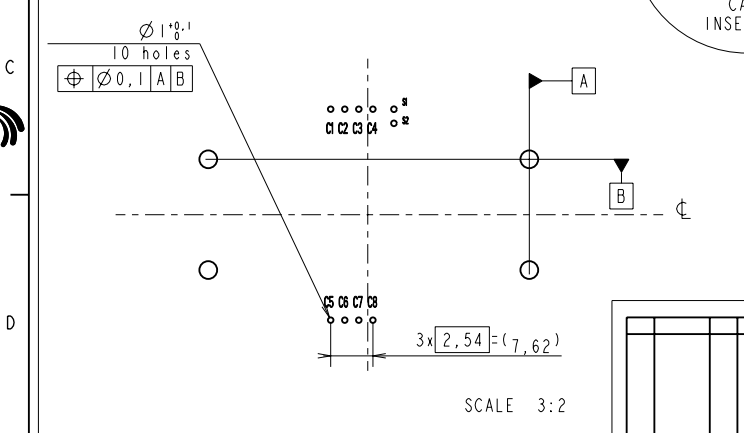
**RECOMMENDED PCB LAYOUT** CONTACT CONFIGURATION : ISO & AFNOR  
( CONNECTOR SIDE )



**STANDARD LAYOUT FOR 'KEEP OUT ZONE' (Connector Side)**



**RECOMMENDED PCB LAYOUT** CONTACT CONFIGURATION : ISO  
( CONNECTOR SIDE )



General Tolerances:  $\pm 0.2$  mm

**EUROPEAN PROJECTION**

www.fciconnect.com		surface ISO 1302	tolerance std ISO 406 ISO 1101	projection mm	
		TOLERANCES UNLESS OTHERWISE SPECIFIED			
Dr	N. TWINCY	'05/08/10	ANGULAR	0.X	±
Eng	DILIP THOMAS	'05/08/10	LINEAR	0.XX	±
Chr	DILIP THOMAS	'06/06/21	$0^{\circ} \pm^{\circ}$	0.XXX	±
Appr	K. V. SIVADAS	'06/06/21	Product family	5S2F	Spec ref
Title		L26 TYPE F05		dwg no	7334L2622F05001
catalog no		SEE TABLE	CUSTOMER	sheet	2 of 2

Copyright FCJ

REF: 2006-01-11