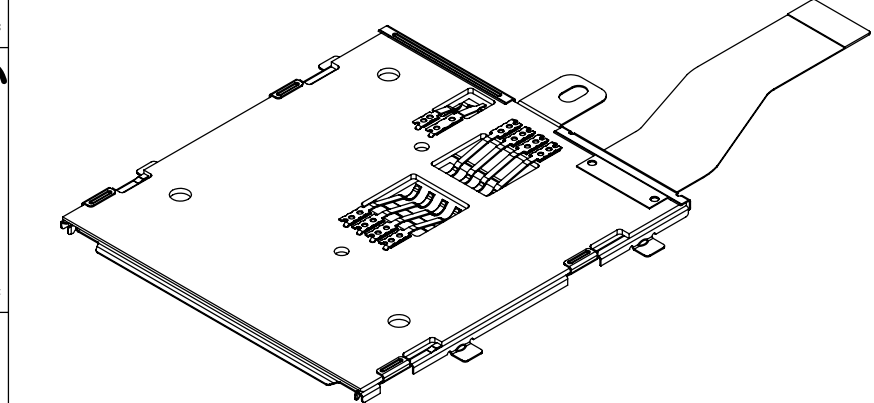


Tous droits strictement réservés. Reproduction ou communication, en des liens interdite sous quelque forme que ce soit sans autorisation écrite du propriétaire. Propriété de © FCI ELECTRONICS. Droits de reproduction FCI ELECTRONICS INC.

All rights strictly reserved. Reproduction or issue to third parties, in any form whatever is not permitted without written authority from the proprietor. Copyright FCI ELECTRONICS INC. Property of © FCI ELECTRONICS

1 | 2 | 3 | 4 | 5 | 6

PRODUCT NO.	FPC	PACKAGING	COMPONENTS	LEAD FREE	PCB COLOR
10010556-002LF	10010559-002LF	10017475-02-002	ELEC. PARTS	YES	BLUE
10010556-003LF	10105325-001	10017475-02-009	N/A	YES	BLACK
10010556-004LF	10056226-002LF(FFC)	10017475-02-004	N/A	YES	BLUE
10010556-006LF	10058983-001LF	10017475-02-003	N/A	YES	BLACK
10010556-005LF	10056226-003LF(FFC)	10017475-02-004	N/A	YES	BLUE
10010556-007LF	10081578-001	10017475-02-006	N/A	YES	BLACK
10010556-008LF	10056226-004LF(FFC)	10017475-02-003	N/A	YES	BLUE
10010556-009LF	10083983-001(FFC)	10017475-02-008	N/A	YES	BLUE
10010556-010LF	10056226-005LF(FFC)	340391-202	N/A	YES	GREEN
10010556-011LF	10087561-001	10017475-02-007	N/A	YES	BLUE
10010556-012LF	10087561-002	10017475-02-007	N/A	YES	BLUE
10010556-013LF	10088568-001	10017475-02-006	N/A	YES	BLACK
10010556-014LF	10087561-004	10017475-02-004	N/A	YES	BLUE
10010556-015LF	10099689-001(FFC)	10017475-02-006	N/A	YES	BLACK
10010556-016LF	10056226-006LF(FFC)	340391-202	N/A	YES	GREEN
10010556-017LF	10056226-007LF(FFC)	340391-202	N/A	YES	GREEN
10010556-018LF	10107293-001(FFC)	10017475-02-004	N/A	YES	GREEN



- NOTE :
- SMART CARD READER FOR LOWER PROFILE HEIGHT OF 3.0 mm.
 - TOTAL CIRCUIT RESISTANCE PER ONE LOOP SHALL NOT EXCEED 100 MILLIOHMS.
 - MATERIALS :
CONTACTS : COPPER ALLOY, GOLD OVER NICKEL ON CONTACT AREA.
TOP PCB : FR4.
COVER : STAINLESS STEEL.
 - ENVIRONMENT :
STORAGE TEMPERATURE : FROM -40°C TO 100°C.
OPERATION TEMPERATURE : FROM -40°C TO 85°C.

form no. 7530-001-103 1 | 2 | 3 | 4 | 5 | 6

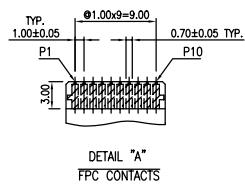
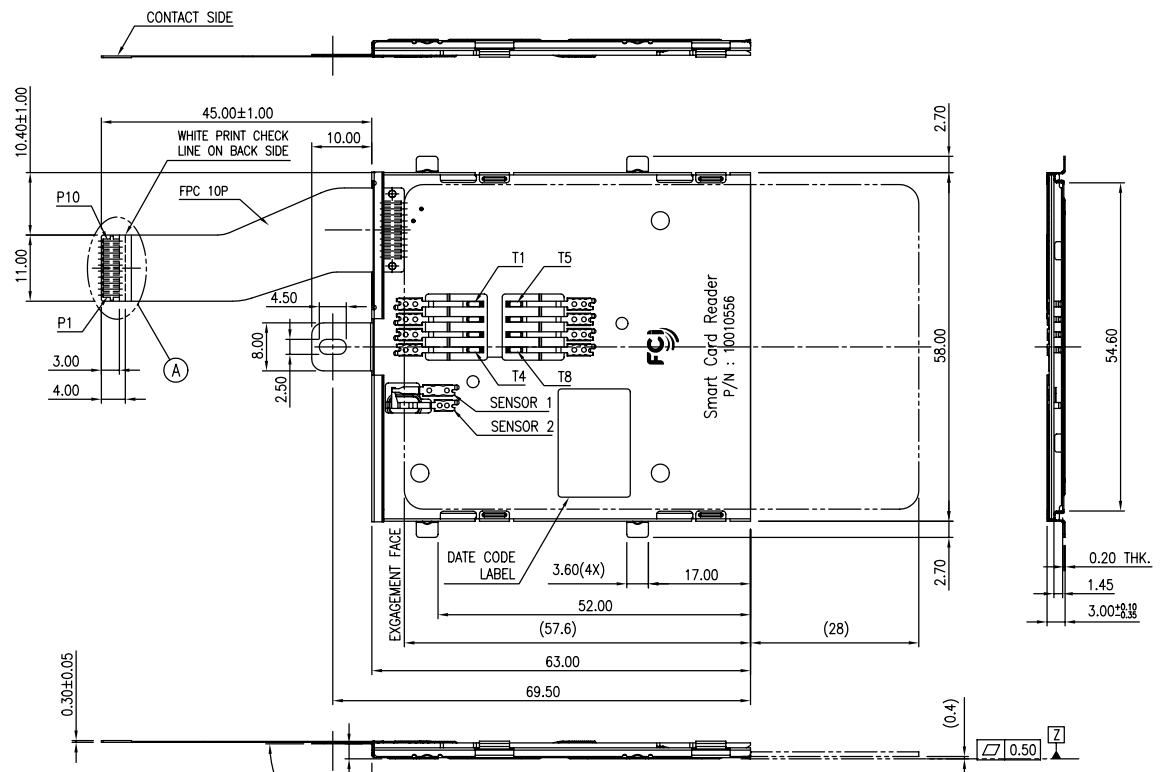
mat'l. code	tolerances unless otherwise specified	CUSTOMER COPY	FCI	www.fciconnect.com
itr ecn no dr date	linear	projection	title SMART CARD READER ASSEMBLY	
R N08-0136 SH 07/07/08	.X ± 0.5		product family 95	
S N08-0212 SH 10/06/08	.XX ± 0.50		code -	
T N09-0224 SH 7/15/09	.XXX ± 0.10		size dwg no 10010556	
U N09-0306 SH 10/13/09	0° ± 2°		sheet 1 of 20	
V N10-0058 SH 3/3/10	engr A.JUANG 6/7/02	scale NONE A3	Printed: 2010-12-20 10:25:26	
	chr A.JUANG 6/7/02			
	app JENN.TSAG 6/7/02			
sheet index	revision sheet			

PDM: Rev:V STATUS:Released

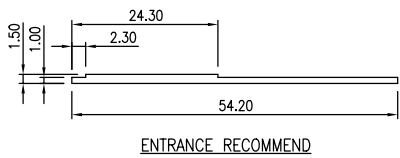
Tous droits strictement réservés. Reproduction ou communication, o des tiers interdite sous quelque forme que ce soit sans autorisation écrite du propriétaire. Propriété de © FCI ELECTRONICS. Droits de reproduction FCI ELECTRONICS INC.

All rights strictly reserved. Reproduction or issue to third parties, in any form whatever is not permitted without written authority from the proprietor. Property of © FCI ELECTRONICS. Copyright FCI ELECTRONICS INC.

PRODUCT NO.
10010556-002LF



SMART CARD	TERMINAL	FPC	FUNC.
C4	T4	P1	RFU
C3	T3	P2	Clock
C2	T2	P3	Reset
C1	T1	P4	Vcc
SENSOR 1	SENSOR 1	P5	SENSOR
SENSOR 2	SENSOR 2	P6	SENSOR
C5	T5	P7	Gnd
C6	T6	P8	Vpp
C7	T7	P9	I/O
C8	T8	P10	RFU



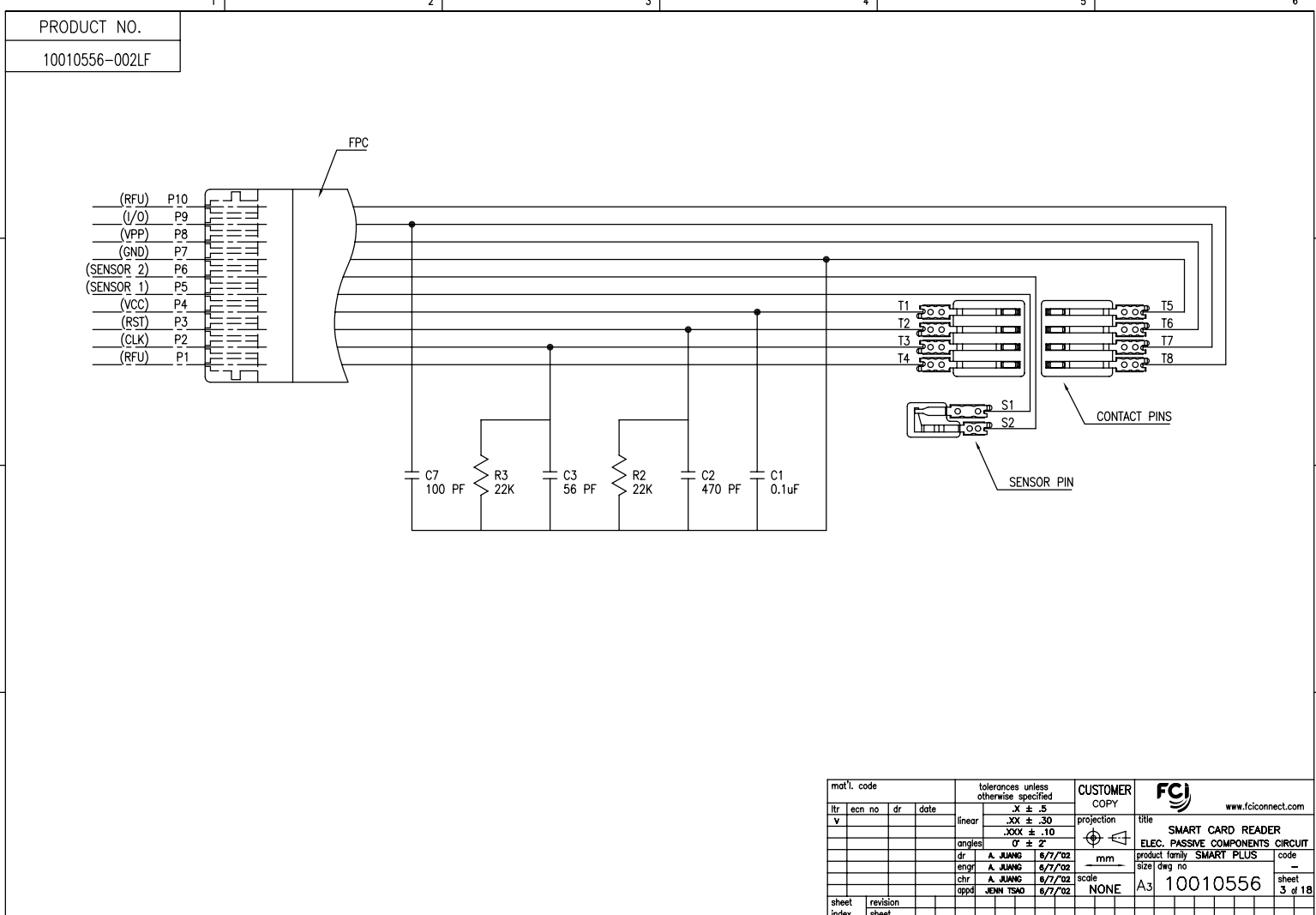
mat'l. code		tolerances unless otherwise specified		CUSTOMER COPY		FCI		www.fciconnect.com	
itr	ecn no	dr	date	linear	projection	title SMART CARD READER ASSEMBLY			
v				.XX ± .30	mm	product family SMART PLUS			
				.XXX ± .10	scale	size A3			
				0 ± 2°	NONE	code 10010556			
		dr	A. JUNG	8/7/02		sheet 2 of 18			
		enqr	A. JUNG	8/7/02					
		chr	A. JUNG	8/7/02					
		appd	JENN TSHO	8/7/02					
sheet index	revision sheet								

PDM: Rev:V STATUS:Released Printed: 2010-12-20 22526

Tous droits strictement réservés. Reproduction ou communication a des tiers interdite sous quelque forme que ce soit sans autorisation écrite du propriétaire. Propriété de © FCI ELECTRONICS INC. Droits de reproduction FCI ELECTRONICS INC.



All rights strictly reserved. Reproduction or issue to third parties in any form whatever is not permitted without written authority from the proprietor. Property of © FCI ELECTRONICS INC. Copyright FCI ELECTRONICS INC.



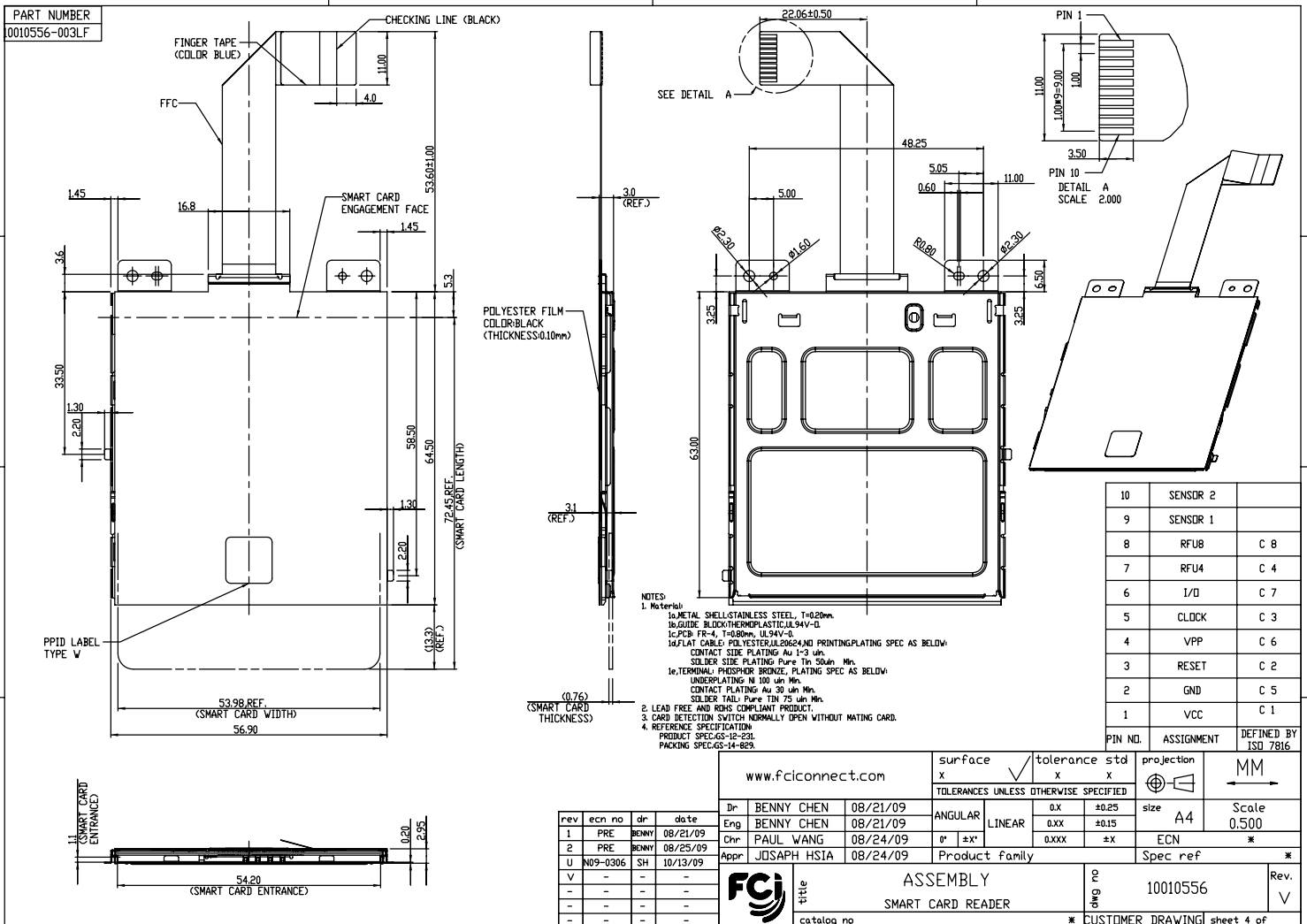
form no. 7530-001-103

mat'l. code		tolerances unless otherwise specified		CUSTOMER COPY		FCJ		www.fciconnect.com	
itr	ecn no	dr	date	linear	.XX ± .30	projection	title	SMART CARD READER	
v				angles	.XXX ± .10	mm	ELEC. PASSIVE COMPONENTS CIRCUIT		
				dr	0° ± 2°	scale	product family	SMART PLUS	code
				engr	A. JUNG 6/7/02	A3	size	dwg no	10010556
				chr	A. JUNG 6/7/02	NONE	sheet	3 of 18	
				appd	JEM TSD 6/7/02		sheet	3 of 18	
sheet	revision								
index	sheet								

PDM: Rev:V STATUS: Released Pri: 10010556 12, 2010 6



Copyright FCI



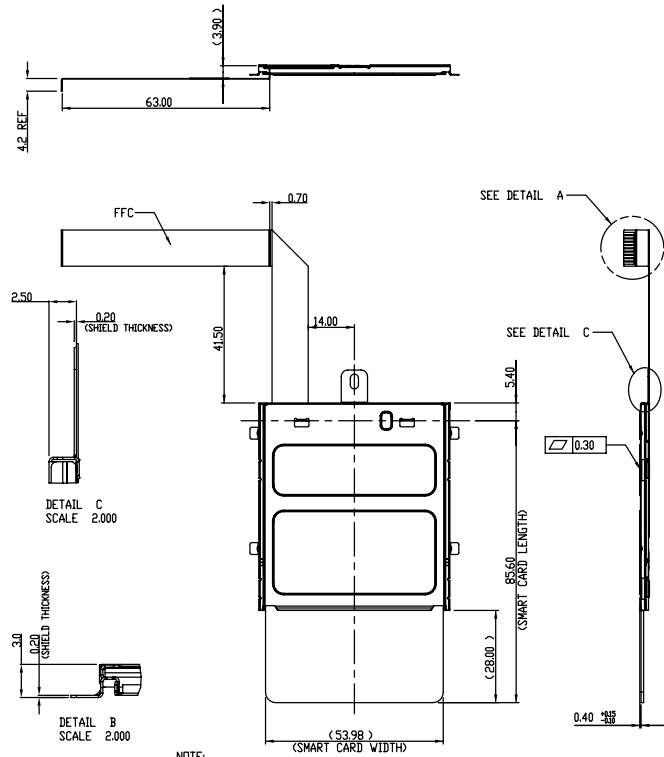
REV F - 0809-07

Tous droits strictement réservés. Reproduction ou communication à des tiers interdite sous quelque forme que ce soit sans autorisation écrite du propriétaire. Propriété de C.FCI. Droits de reproduction FCI.

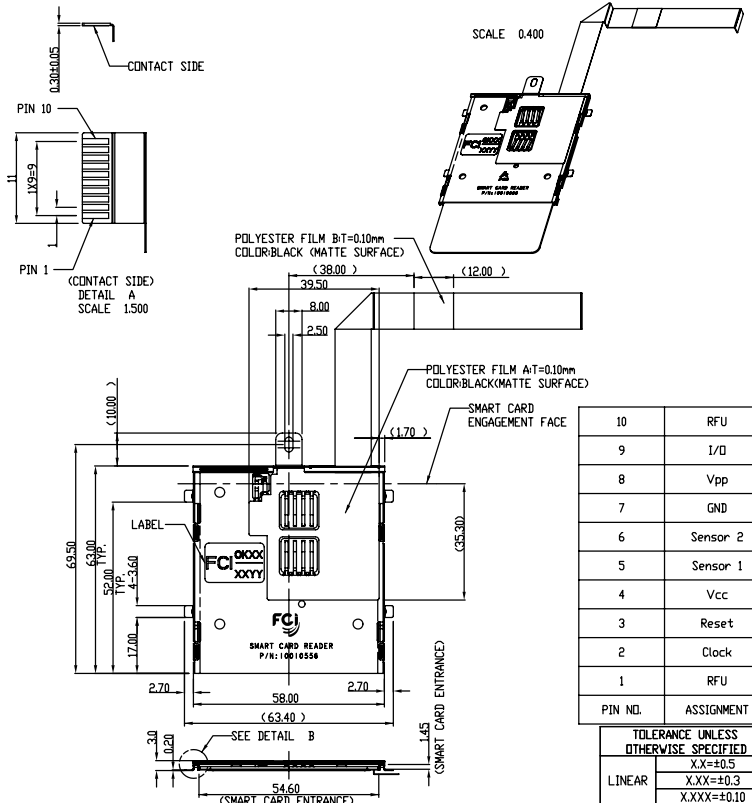


All rights strictly reserved. Reproduction or issue to third parties in any form whatever is not permitted without written authority from the proprietor. Property of FCI. Copyright FCI.

PRODUCT NO
10010556-004LF



NOTE:
1. Material:
METAL SHELL: STAINLESS STEEL, T=0.20mm
PCB: FR-4, T=0.80mm
TERMINAL: PHOSPHOR BRONZE
PLATING SPEC AS BELOW:
ALL OVER NICKEL UNDERPLATING
GOLD PLATING ON CONTACT SURFACE.
MATT. TIN PLATING ON SOLDER TAIL.
FLEXIBLE FLAT CABLE: TOTAL LENGTH=1244±2mm
PLATING SPEC AS BELOW:
CONTACT SURFACE: TIN PLATING.
SOLDER TAIL: TIN PLATING.
2. CARD DETECTION SWITCH NORMALLY OPEN WITHOUT MATING CARD
3. REFERENCE SPECIFICATION:
PRODUCT SPEC. GS 12-231
PACKING SPEC. GS 14-829



PIN NO.	ASSIGNMENT
10	RFU
9	I/O
8	Vpp
7	GND
6	Sensor 2
5	Sensor 1
4	Vcc
3	Reset
2	Clock
1	RFU
PIN NO.	ASSIGNMENT

TOLERANCE UNLESS OTHERWISE SPECIFIED
XX=±0.5
XXX=±0.3
XXX=±0.10
ANGLE ±0°30'

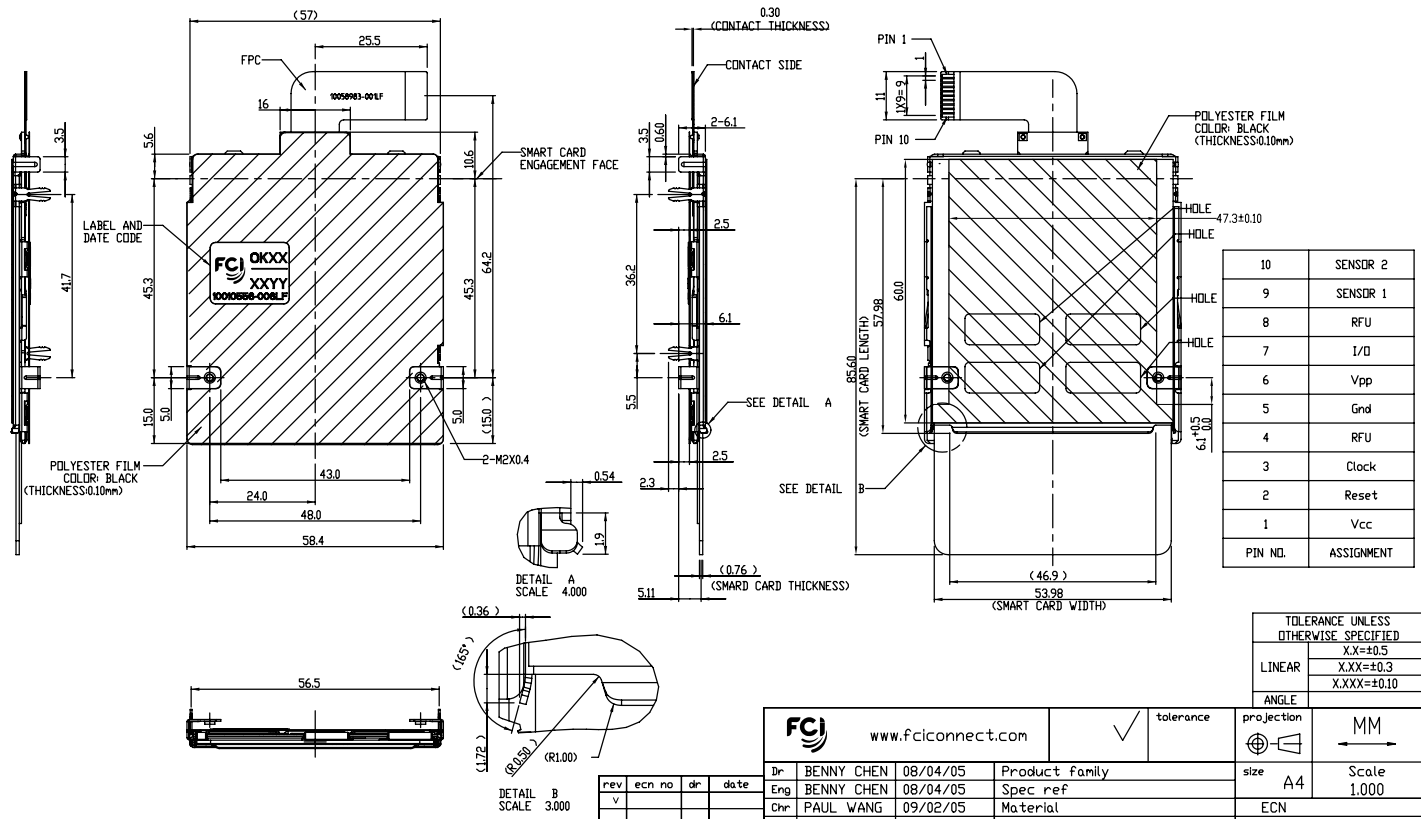
Mark with 10010556-004LF REV. in area indicated by X...		Material		Spec ref	
		Mat code		tolerance	
		Heattreat		projection	
		Plating/Finish		size	
rev	ecn no	dr	date	Eng	BENNY CHEN 07/06/05
V				Chr	Paul Wang 08/11/05
				Appr	Joseph Hsia 08/11/05
				Product family	
				Model Name 10010556-004LF	
				Model Revision	
				REL Level	
FCI		title		Rev.	
		ASSEMBLY		10010556	
		SMART CARD READER		V	
Pro/E file		catalog no		CUSTOMER DRAWING	
				sheet 5 of	

Tous droits strictement réservés. Reproduction ou communication à des tiers interdite sous quelque forme que ce soit sans l'autorisation écrite préalable de FCI. Droits de reproduction FCI.



All rights strictly reserved. Reproduction or issue to third parties in any form whatever is not permitted without written permission of FCI. Copyright FCI.

PRODUCT NO
10010556-006LF



rev	ecn no	dr	date
v			

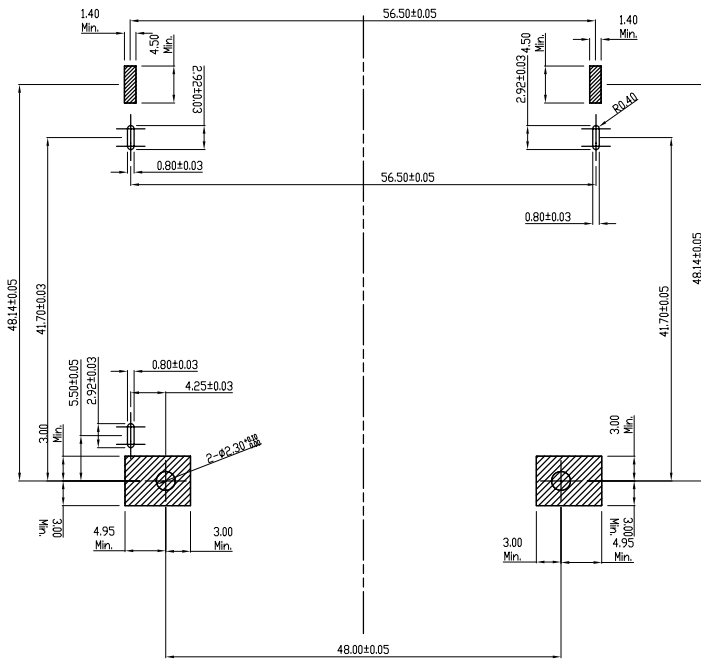
www.fciconnect.com		<input checked="" type="checkbox"/> tolerance	<input type="checkbox"/> projection	<input type="checkbox"/> MM
Dr	BENNY CHEN	08/04/05	Product family	
Eng	BENNY CHEN	08/04/05	Spec ref	
Chr	PAUL WANG	09/02/05	Material	
Appr	JOSEPH HSIA	09/02/05	ECN	
title			dwg no	Rev.
SMART CARD READER (FPC CABLE) ASSEMBLY			10010556	v
catalog no			CUSTOMER DRAWING	sheet 6 of

Tous droits strictement reserves. Reproduction ou communication a des tiers interdite sous quelque forme que ce soit sans autorisation écrite du propriétaire. Propriete de c.FCI. Droits de reproduction FCI.

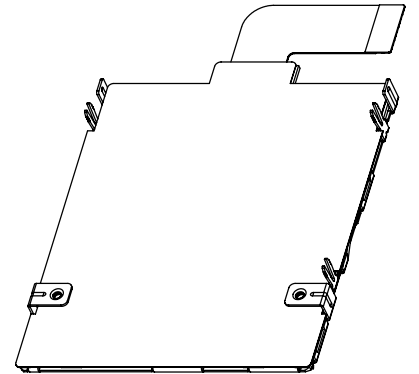


All rights strictly reserved. Reproduction or issue to third parties in any form whatever is not permitted without written authority from the proprietor. Property of FCI. Copyright FCI.

PRODUCT NO
10010556-006LF



RECOMMENDED PCB LAYOUT
(PCB THICKNESS: 1.2 mm)
(MOUNTING SIDE)



- NOTE:
1. MATERIAL:
METAL SHELL: STAINLESS STEEL, T=0.40mm
PCB: FR-4, T=0.80mm
TERMINAL: PHOSPHOR BRONZE.
PLATING SPEC AS BELOW:
ALL OVER NICKEL UNDERPLATING
GOLD PLATING ON CONTACT SURFACE.
MATTE TIN PLATING ON SOLDER TAIL.
FLEX CIRCUIT CABLE(FPC):
PLATING SPEC AS BELOW:
CONTACT SURFACE: GOLD FLASH PLATING.
SOLDER TAIL: PURE TIN PLATING.
2. CARD DETECTION SWITCH NORMALLY OPEN WITHOUT MATING CARD
3. REFERENCE SPECIFICATION:
PRODUCT SPEC. GS-12-231
PACKING SPEC. GS-14-829

FCI		www.fciconnect.com		tolerance	projection	MM
Dr	BENNY CHEN	08/04/05	Product family			
Eng	BENNY CHEN	08/04/05	Spec ref			
Chr	PAUL WANG	09/02/05	Material			
Appr	JOSEPH HSIA	09/02/05	ECN			
title			smart card reader (FPC CABLE)	size	A4	Scale
ASSEMBLY			10010556	Rev.		V
catalog no			sheet 7 of			

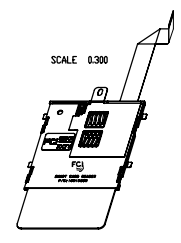
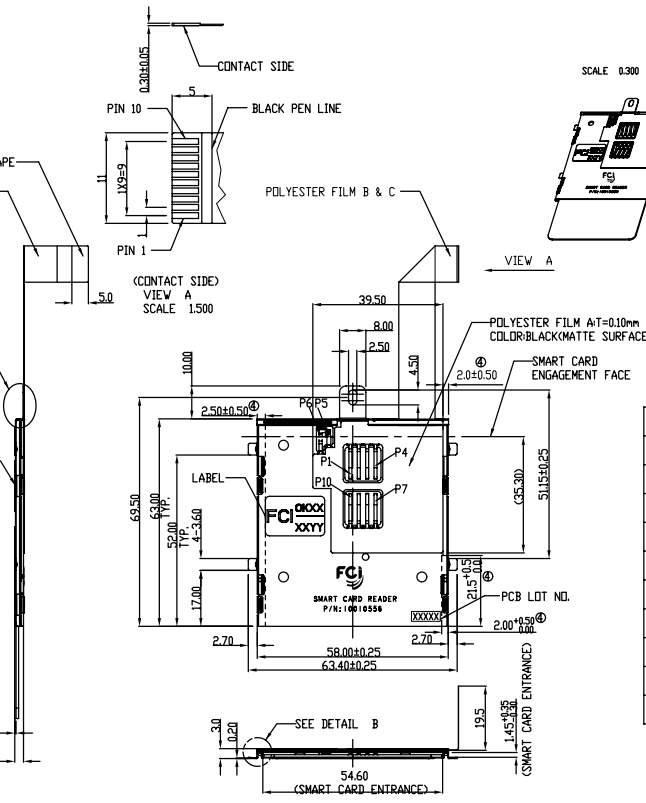
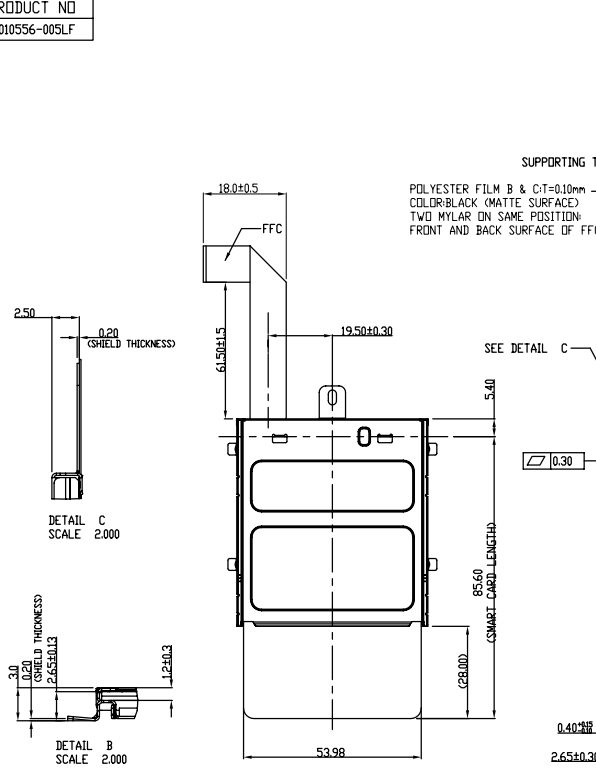
3 PDM: Rev:V STATUS: Released 4 Printed: Mar 12, 2010

Tous droits strictement réservés. Reproduction ou communication à des tiers interdite sous quelque forme que ce soit sans autorisation écrite du propriétaire. Propriété de C.FCI. Droits de reproduction FCI.



All rights strictly reserved. Reproduction or issue to third parties in any form whatever is not permitted without written authority from the proprietor. Property of FCI. Copyright FCI.

PRODUCT NO
10010556-005LF



10	RFU
9	I/O
8	Vpp
7	GND
6	Sensor 2
5	Sensor 1
4	Vcc
3	Reset
2	Clock
1	RFU
PIN NO.	ASSIGNMENT

TOLERANCE UNLESS OTHERWISE SPECIFIED	
LINEAR	X.XX=±0.25 X.XXX=±0.13 X.XXX=±0.050
ANGLE	±0°30'

- NOTE:
- Material:
METAL SHELL: STAINLESS STEEL, T=0.20mm
PCB: FR-4, T=0.80mm
TERMINAL: PHOSPHOR BRONZE.
PLATING SPEC AS BELOW:
ALL OVER NICKEL UNDERPLATING
GOLD PLATING ON CONTACT SURFACE.
MATTE TIN PLATING ON SOLDER TAIL.
FLEXIBLE FLAT CABLE: TOTAL LENGTH=103.5±2mm
PLATING SPEC AS BELOW:
CONTACT SURFACE: TIN PLATING.
SOLDER TAIL: TIN PLATING.
 - CARD DETECTION SWITCH NORMALLY OPEN WITHOUT MATING CARD
 - REFERENCE SPECIFICATION:
PRODUCT SPEC. GS 12-231
PACKING SPEC. GS 14-829
 - THE AREA IS PROHIBITED TO PASTE THE MYLAR AND LABEL.

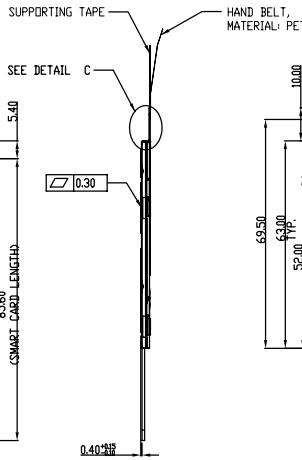
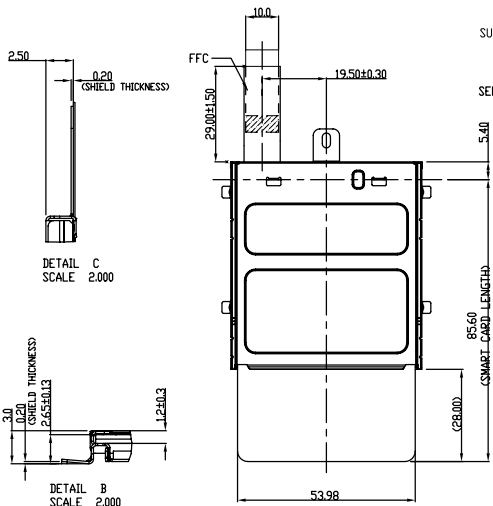
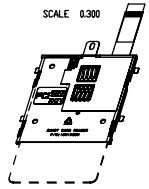
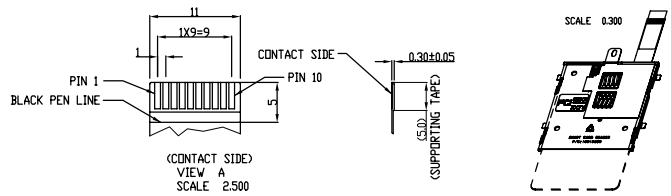
Mark with 10010556-004LF REV. in area indicated by X....		Material		Spec ref	
		Mat code		tolerance	
		Heattreat		projection	
		Plating/Finish		size	
rev	ecn no	dr	date	Eng	DANIEL TAD 07/05/07
V				Chr	DANIEL TAD 07/05/07
				Product family	
				Model Name 10010556-005LF	
				Model Revision	
				REL Level	
FCI		title		Rev.	
		ASSEMBLY		10010556	
		SMART CARD READER		V	
Pro/E file		catalog no		CUSTOMER DRAWING	
				sheet 8 of	

Tous droits strictement réservés. Reproduction ou communication à des tiers interdite sous quelque forme que ce soit sans autorisation écrite du propriétaire. Propriété de C.FCI. Droits de reproduction FCI.



All rights strictly reserved. Reproduction or issue to third parties in any form whatever is not permitted without written authority from the proprietor. Property of FCI. Copyright FCI.

PRODUCT NO
10010556-008LF



10	RFU
9	I/O
8	Vpp
7	GND
6	Sensor 2
5	Sensor 1
4	Vcc
3	Reset
2	Clock
1	RFU
PIN NO.	ASSIGNMENT

TOLERANCE UNLESS OTHERWISE SPECIFIED	
LINEAR	XX=±0.5 XXX=±0.3 XXX=±0.10
ANGLE	±0°30'

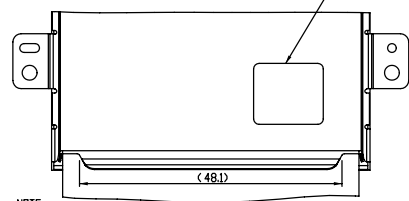
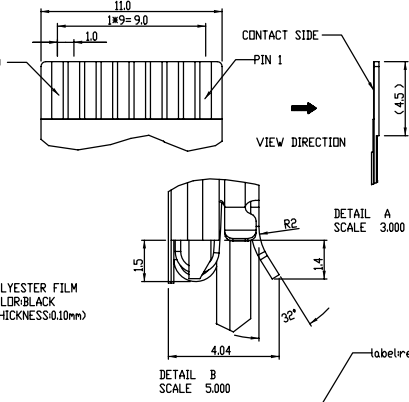
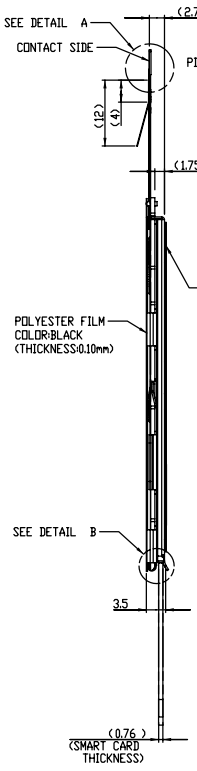
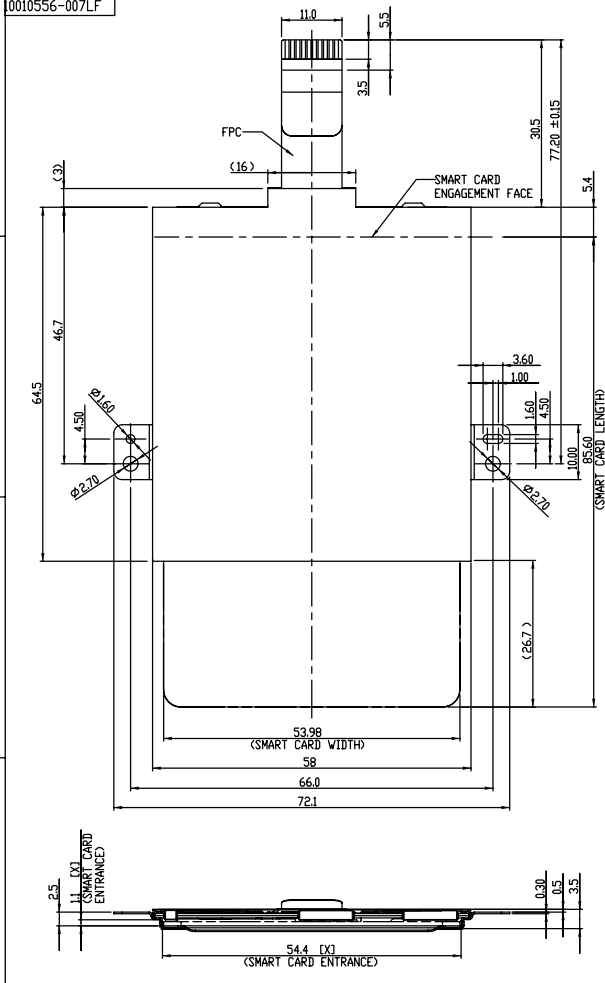
NOTE:
1. Material:
METAL SHELL: STAINLESS STEEL, T=0.20mm
PCB: FR-4, T=0.80mm
TERMINAL: PHOSPHOR BRONZE.
PLATING SPEC AS BELOW:
ALL OVER NICKEL UNDERPLATING
GOLD PLATING ON CONTACT SURFACE.
MATTE TIN PLATING ON SOLDER TAIL.
FLEXIBLE FLAT CABLE: TOTAL LENGTH=33.5±1mm
PLATING SPEC AS BELOW:
CONTACT SURFACE: TIN PLATING.
SOLDER TAIL: TIN PLATING.
2. CARD DETECTION SWITCH NORMALLY OPEN WITHOUT MATING CARD
3. REFERENCE SPECIFICATION:
PRODUCT SPEC. GS 12-231
PACKING SPEC. GS 14-829
④ THE AREA IS PROHIBITED TO PASTE THE MYLAR AND LABEL.

Mark with 10010556-004LF REV. in area indicated by X....		Material		Spec ref	
		Mat code		tolerance	
		Heat treat		projection	
		Plating/Finish		size	
rev	ecn no	dr	date	size	Scale
v				A4	0.500
		Br DANIEL TAD 07/05/07		Product family	
		Eng DANIEL TAD 07/05/07		Model Name 10010556-008LF	
		Chr DANIEL TAD 07/05/07		Model Revision	
		Appr JOSEPH HSIA 07/05/07		REL Level	
		FCI		title	
		ASSEMBLY		10010556	
		SMART CARD READER		Rev. V	
		Pro/E file catalog no		CUSTOMER DRAWING sheet 9 of 9	



Copyright FCI

PART NUMBER
10010556-007LF



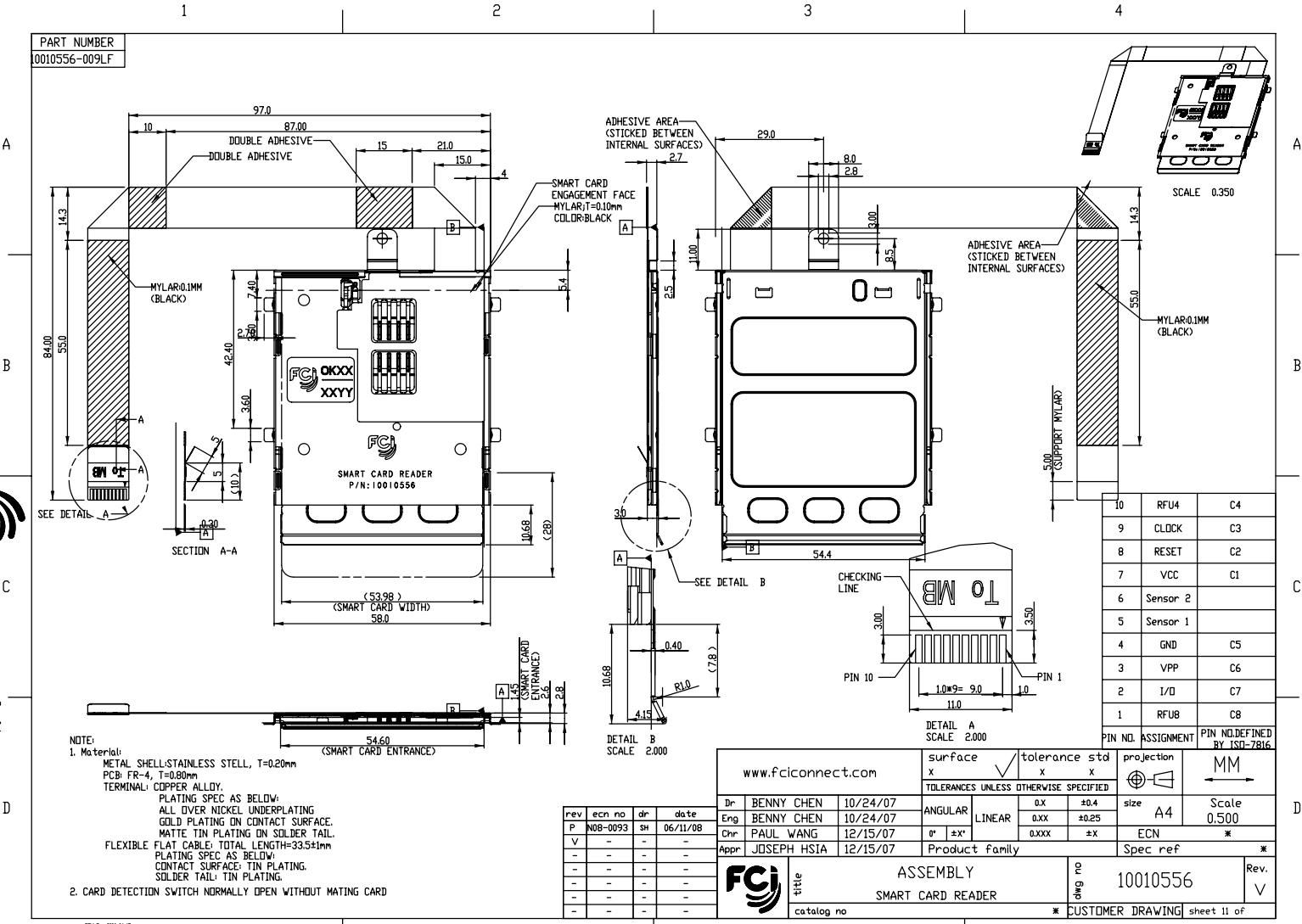
PIN NO.	ASSIGNMENT
10	SENSOR 2
9	SENSOR 1
8	RFU
7	I/O
6	VPP
5	GND
4	RFU
3	CLOCK
2	RESET
1	VCC

NOTE:
1. Material:
METAL SHELL: STAINLESS STEEL, T=0.30mm
GUIDE BLOCK: THERMOPLASTIC, UL94V-0.
PCB: FR-4, T=0.80mm, UL94V-0.
PCB: POLYIMIDE, T=0.30mm, UL94V-0.
FPC: POLYIMIDE, T=0.30mm, UL94V-0.
PLATING SPEC AS BELOW:
UNDERPLATING: Ni 50 uin Min.
CONTACT SIDE PLATING: Au 3 uin Min.
SOLDER SIDE PLATING: Pure Tin 100 uin Min.
TERMINAL: COPPER ALLOY.
PLATING SPEC AS BELOW:
UNDERPLATING: Ni 50 uin Min.
CONTACT PLATING: Au 30 uin Min.
SOLDER TAIL: Pure TIN 75 uin Min.
2. CARD DETECTION SWITCH NORMALLY OPEN WITHOUT MATING CARD
3. REFERENCE SPECIFICATION
PRODUCT SPEC: GS-12-231
PACKING SPEC: GS-14-829.

rev	ecn no	dr	date
M	N08-0024	BENNY	03/05/08
N	N08-0045	BENNY	05/05/08
V			

www.fciconnect.com		surface	tolerance std	projection	MM
		x	x	x	
		TOLERANCES UNLESS OTHERWISE SPECIFIED			
Dr	BENNY CHEN	07/23/07	ANGULAR	0.X	±0.25
Eng	BENNY CHEN	07/23/07	LINEAR	0.XX	±0.15
Chr	PAUL WANG	09/10/07	0° ±3°	0.XXX	±
Appr	JOSEPH HSIA	09/11/07	Product family	ECN	*
FCI		ASSEMBLY		size	A4
title		SMART CARD READER		Scale	0.500
catalog no		* CUSTOMER DRAWING		ECN	*
				Spec ref	*
				Rev	V
				10010556	
				sheet 10 of	

PART NUMBER
10010556-009LF



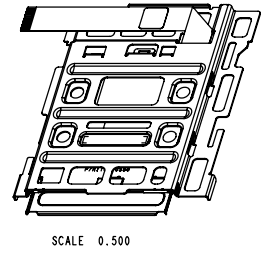
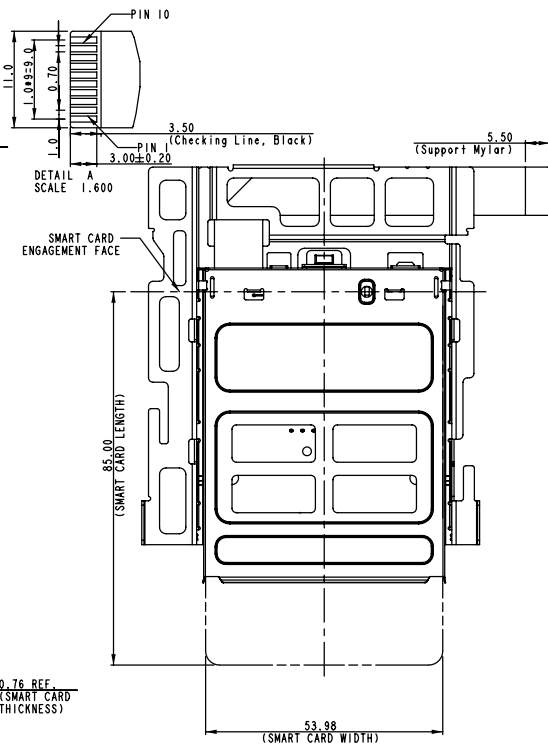
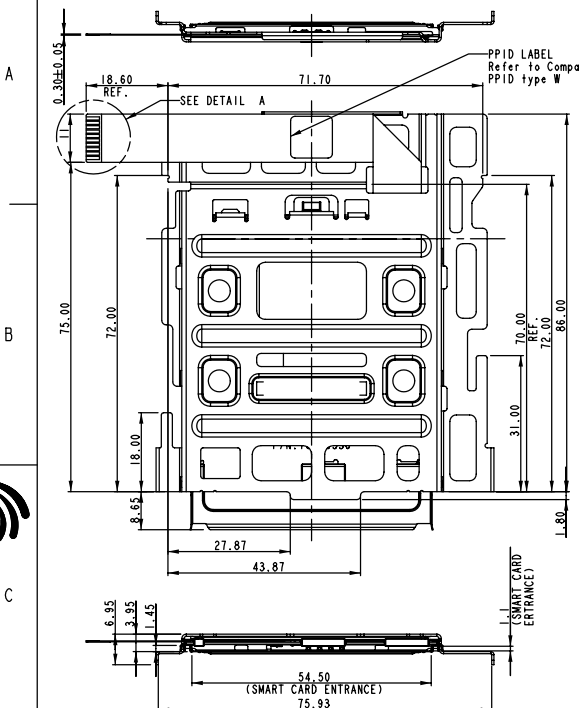
10	RFU4	C4
9	CLOCK	C3
8	RESET	C2
7	VCC	C1
6	Sensor 2	
5	Sensor 1	
4	GND	C5
3	VPP	C6
2	I/O	C7
1	RFU8	C8

NOTE:
1. Material:
METAL SHELL-STAINLESS STEEL, T=0.20mm
PCB: FR-4, T=0.60mm
TERMINAL: COPPER ALLOY.
PLATING SPEC AS BELOW:
ALL OVER NICKEL UNDERPLATING
GOLD PLATING ON CONTACT SURFACE.
MATTE TIN PLATING ON SOLDER TAIL.
FLEXIBLE FLAT CABLE: TOTAL LENGTH=33.5±1mm
PLATING SPEC AS BELOW:
CONTACT SURFACE: TIN PLATING.
SOLDER TAIL: TIN PLATING.
2. CARD DETECTION SWITCH NORMALLY OPEN WITHOUT MATING CARD

rev	ecn no	dr	date
P	N08-0093	SH	06/11/08
V	-	-	-
-	-	-	-
-	-	-	-
-	-	-	-
-	-	-	-

www.fciconnect.com		surface	tolerance	std	projection	MM
Dr	BENNY CHEN	10/24/07	x	x	x	
Eng	BENNY CHEN	10/24/07	ANGULAR	0.X	±0.4	size A4 Scale 0.500
Chr	PAUL WANG	12/15/07	LINEAR	0.XX	±0.25	ECN *
Appr	JOSEPH HSIA	12/15/07	0° ±*	0.XXX	±*	Spec ref *
Product family		ASSEMBLY		10010556		Rev. V
SMART CARD READER		title		catalog no		* CUSTOMER DRAWING sheet 11 of

PART NUMBER
10010556-010LF



PIN NO.	ASSIGNMENT	PIN NO. DEFINED BY ISO-7816
10	VCC	C1
9	Reset	C2
8	Clock	C3
7	RFU4	C4
6	Gnd	C5
5	VPP	C6
4	I/O	C7
3	RFU8	C8
2	SENSOR 2	
1	SENSOR 1	

NOTE:
1. Material:
METAL SHELL: STAINLESS STEEL
BRACKET: STEEL
GUIDE BLOCK: THERMOPLASTIC, UL94V-0.
PCB: FR-4, T=0.80mm, UL94V-0.
FFC: POLYESTER, UL20624.
PLATING SPEC AS BELOW:
CONTACT SIDE PLATING: GOLD.
SOLDER SIDE PLATING: Pure Tin.
TERMINAL: COPPER ALLOY.
PLATING SPEC AS BELOW:
UNDERPLATING: NICKEL.
CONTACT PLATING: GOLD.
SOLDER TAIL: Pure TIN.
2. CARD DETECTION SWITCH NORMALLY OPEN WITHOUT MATING CARD
3. REFERENCE SPECIFICATION:
PRODUCT SPEC.: GS-12-231.
PACKING SPEC.: GS-14-829.

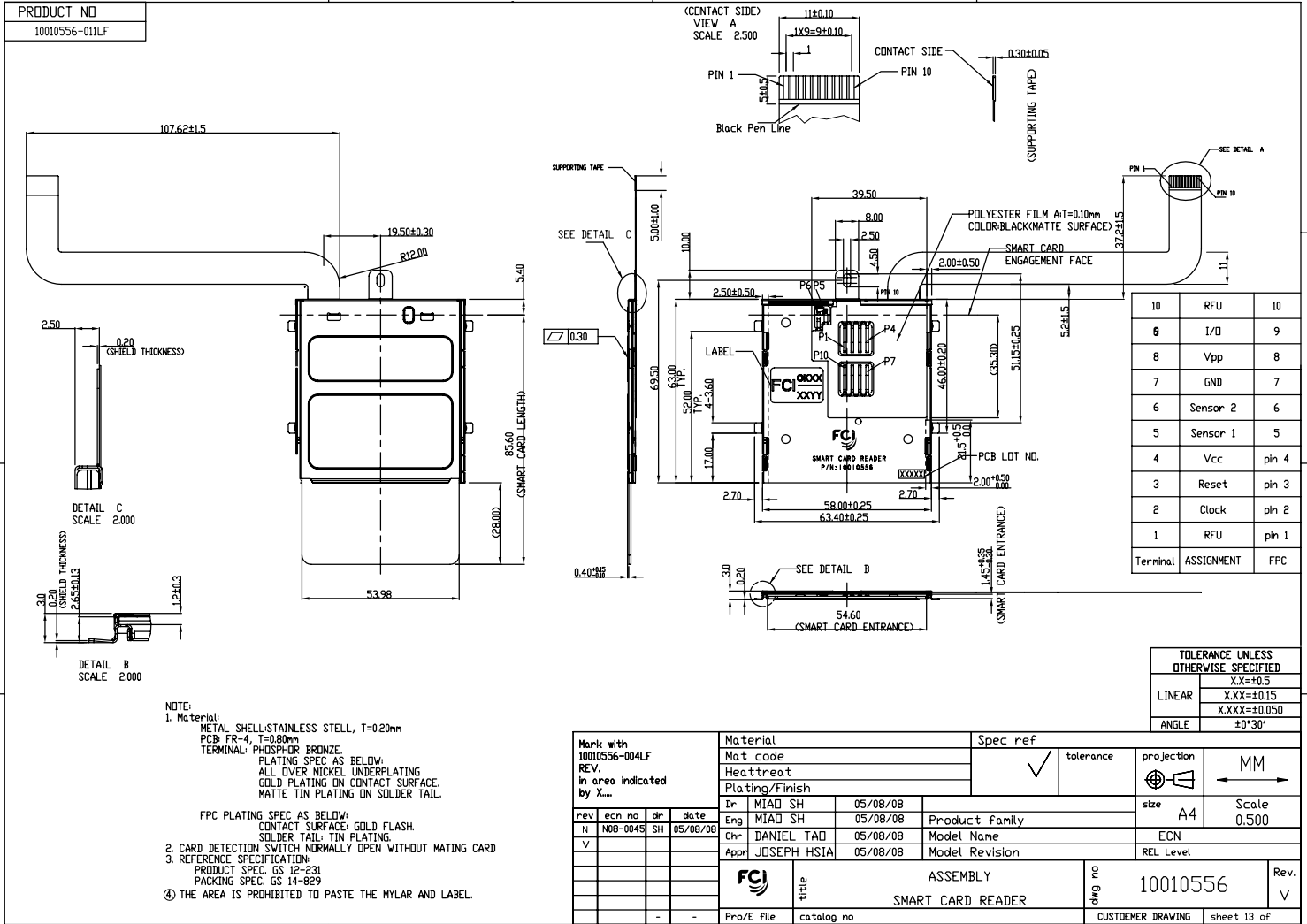
www.fciconnect.com		surface	tolerance std	projection	MM
		X	X	X	
TOLERANCES UNLESS OTHERWISE SPECIFIED					
Dr	BENNY CHEN	02/05/08	ANGULAR	0.X	±0.3
Eng	BENNY CHEN	02/05/08	LINEAR	0.XX	±.20
Chr	PAUL WANG	02/13/08	0° ±X°	0.XXX	±X
Appr	JOSEPH HSIA	02/15/08	Product family		Spec ref
rev	ecn no	dr	date		
P	N08-0093	SH	06/11/08		
R	N08-0136	SH	07/01/08		
S	N08-0212	SH	10/06/08		
V	-	-	-		
-	-	-	-		
-	-	-	-		

FCj	title	ASSEMBLY	Qty no	10010556	Rev.	V
		SMART CARD READER				
	catalog no	* CUSTOMER DRAWING		sheet	12 of	

Tous droits strictement réservés. Reproduction ou communication à des tiers interdite sous quelque forme que ce soit sans autorisation écrite du propriétaire. Propriété de C.FCI. Droits de reproduction FCI.



All rights strictly reserved. Reproduction or issue to third parties in any form whatever is not permitted without written authority from the proprietor. Property of FCI. Copyright FCI.



1

2

3 PDM: Rev:V

STATUS:Released

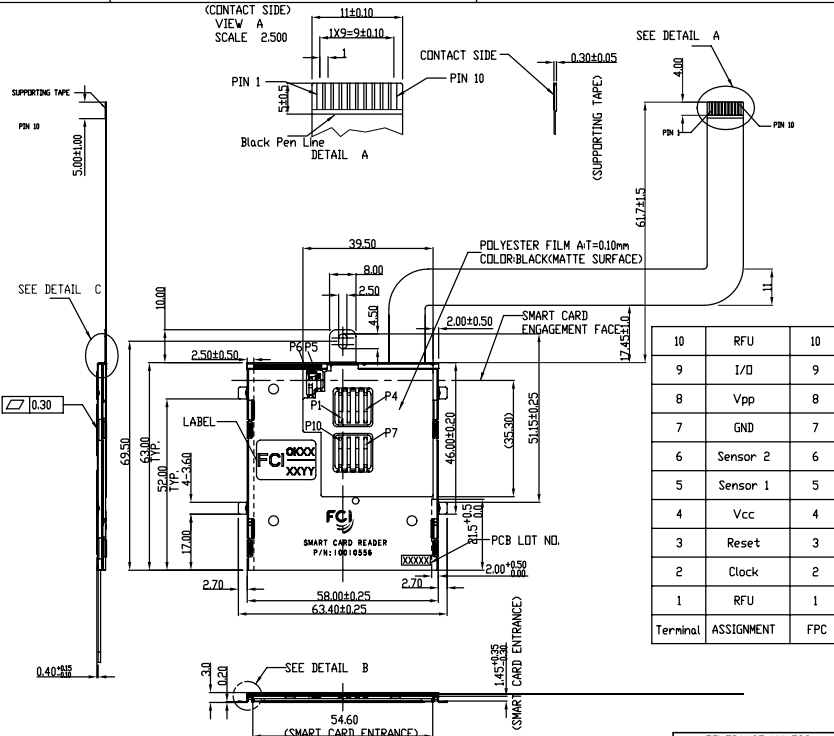
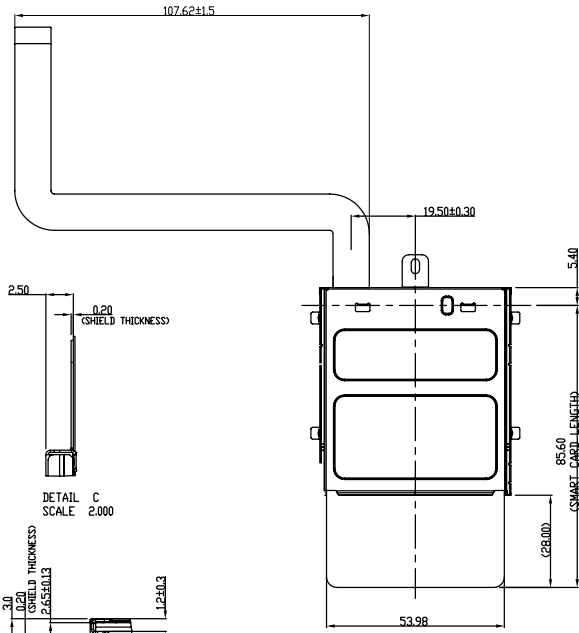
4 Printed: Mar 12, 2010

Tous droits strictement réservés. Reproduction ou communication à des tiers interdite sous quelque forme que ce soit sans autorisation écrite du propriétaire. Propriété de FCI. Droits de reproduction FCI.



All rights strictly reserved. Reproduction or issue to third parties in any form whatever is not permitted without written authority from the proprietor. Property of FCI. Copyright FCI.

PRODUCT NO
10010556-012LF



10	RFU	10
9	I/O	9
8	Vpp	8
7	GND	7
6	Sensor 2	6
5	Sensor 1	5
4	Vcc	4
3	Reset	3
2	Clock	2
1	RFU	1
Terminal	ASSIGNMENT	FPC

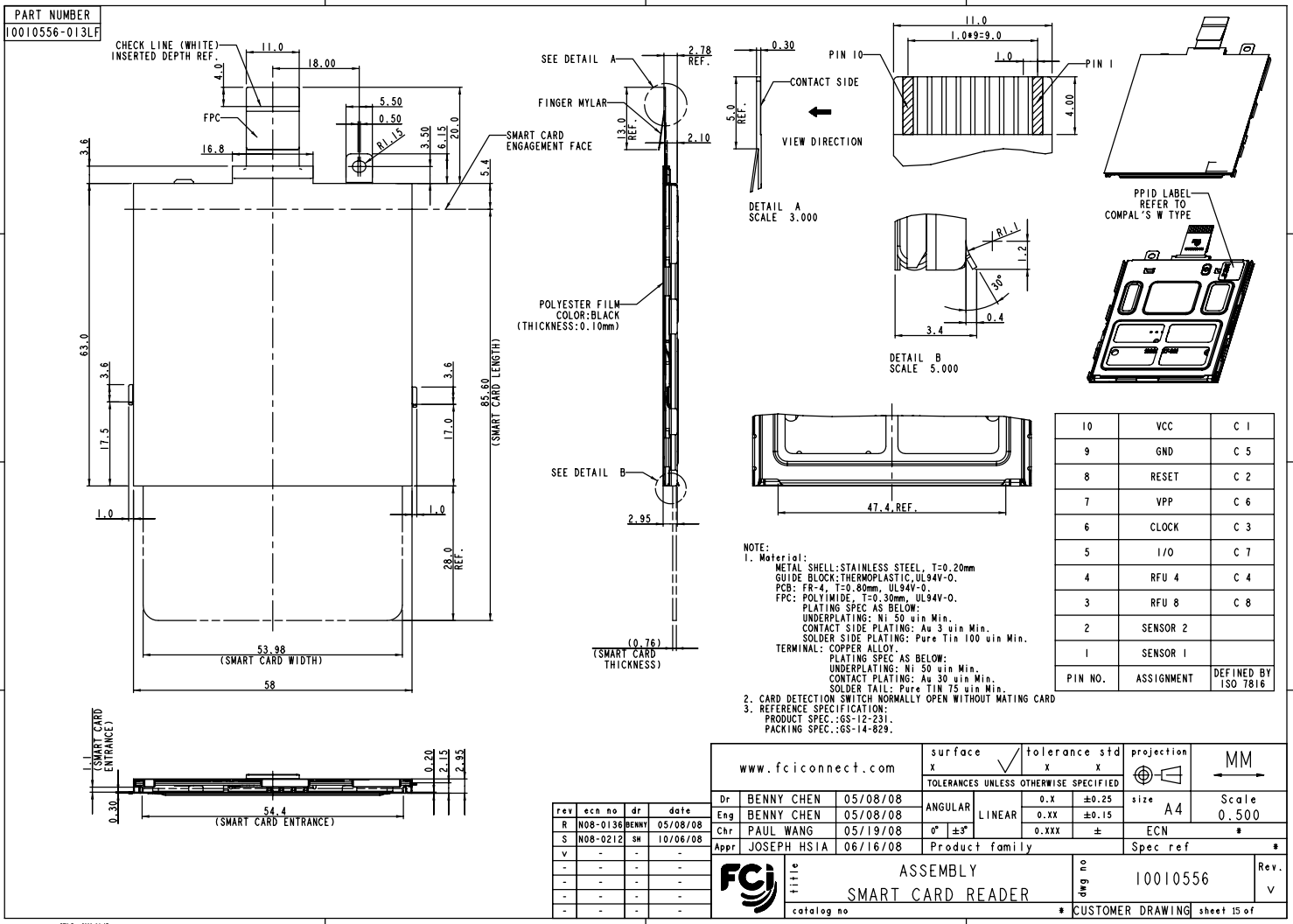
TOLERANCE UNLESS OTHERWISE SPECIFIED	
LINEAR	XX=±0.5 X.XX=±0.15 X.XXX=±0.050
ANGLE	±0°30'

- NOTE:
1. Material:
METAL SHELL: STAINLESS STEEL, T=0.20mm
PCB: FR-4, T=0.80mm
TERMINAL: PHOSPHOR BRONZE.
PLATING SPEC AS BELOW:
ALL OVER NICKEL UNDERPLATING
GOLD PLATING ON CONTACT SURFACE.
MATTE TIN PLATING ON SOLDER TAIL.
FPC PLATING SPEC AS BELOW:
CONTACT SURFACE: GOLD FLASH.
SOLDER TAIL: TIN PLATING.
2. CARD DETECTION SWITCH NORMALLY OPEN WITHOUT MATING CARD
3. REFERENCE SPECIFICATION:
PRODUCT SPEC. GS 12-231
PACKING SPEC. GS 14-829
④ THE AREA IS PROHIBITED TO PASTE THE MYLAR AND LABEL.

Mark with 10010556-004LF REV. In area indicated by X...		Material		Spec ref	
		Mat code		tolerance	
		Heat treat		projection	
		Plating/Finish		MM	
rev	ecn no	dr	date	Br	MIAD SH
N	008-0045	SH	05/08/08	Eng	MIAD SH
V				Chr	DANIEL TAD
				Appr	JOSEPH HSTA
		Product family		size A4	
		Model Name		Scale 0.500	
		Model Revision		ECN	
		REL Level		Rev. V	
		title ASSEMBLY SMART CARD READER		eng no 10010556	
		Pro/E file catalog no		CUSTOMER DRAWING sheet 14 of	



Copyright FCI.

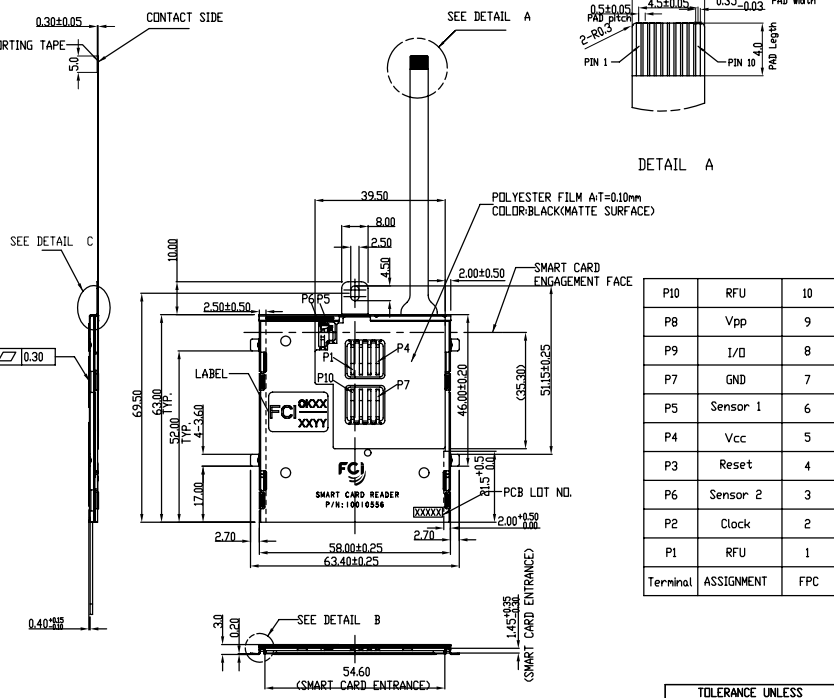
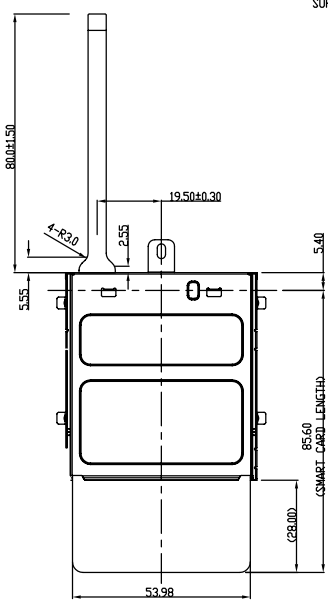
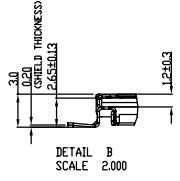
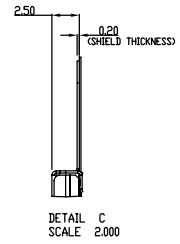


Tous droits strictement réservés. Reproduction ou communication à des tiers interdite sous quelque forme que ce soit sans autorisation écrite du propriétaire. Propriété de C.FCI. Droits de reproduction FCI.



All rights strictly reserved. Reproduction or issue to third parties in any form whatever is not permitted without written authority from the proprietor. Property of FCI. Copyright FCI.

PRODUCT NO	FPC
10010556-014LF	10086571-004



P10	RFU	10
P8	Vpp	9
P9	I/O	8
P7	GND	7
P5	Sensor 1	6
P4	Vcc	5
P3	Reset	4
P6	Sensor 2	3
P2	Clock	2
P1	RFU	1
Terminal	ASSIGNMENT	FPC

- NOTE:
- Material: METAL SHELL: STAINLESS STEEL, T=0.20mm
PCB: FR-4, T=0.80mm
TERMINAL: PHOSPHOR BRONZE.
PLATING SPEC AS BELOW:
ALL OVER NICKEL UNDERPLATING
GOLD PLATING ON CONTACT SURFACE.
MATTE TIN PLATING ON SOLDER TAIL.

FPC PLATING SPEC AS BELOW:
CONTACT SURFACE: GOLD FLASH.
SOLDER TAIL: TIN PLATING.
 - CARD DETECTION SWITCH NORMALLY OPEN WITHOUT MATING CARD
 - REFERENCE SPECIFICATION:
PRODUCT SPEC. GS 12-231
PACKING SPEC. GS 14-829
 - THE AREA IS PROHIBITED TO PASTE THE MYLAR AND LABEL.
 - ALL PART SAME AS 10010556-011LF, EXCEPT FPC

Mark with 10010556-014LF REV. in area indicated by X....	Material	Spec ref					
	Mat code	tolerance					
	Heat treat	projection					
	Plating/Finish	size					
rev	ecn no	dr	date	Br	MIAD SH	05/08/08	Product family
N	N08-0045	SH	05/08/08	Eng	MIAD SH	05/08/08	Product family
P	N08-XXXX	SH	05/23/08	Chr	DANIEL TAD	05/08/08	Model Name
R	N08-0136	SH	07/07/08	Appr	JOSEPH HSA	05/08/08	Model Revision
v							REL Level

FCI	title	ASSEMBLY	Rev.
		SMART CARD READER	v
Pro/E file	catalog no	customer drawing	sheet 16 of
		10010556	
		size	A4
		Scale	0.500
		ECN	
		REL Level	

TOLERANCE UNLESS OTHERWISE SPECIFIED	
LINEAR	XX=±0.5
	XXX=±0.15
	XXX=±0.050
ANGLE	±0°30'

1

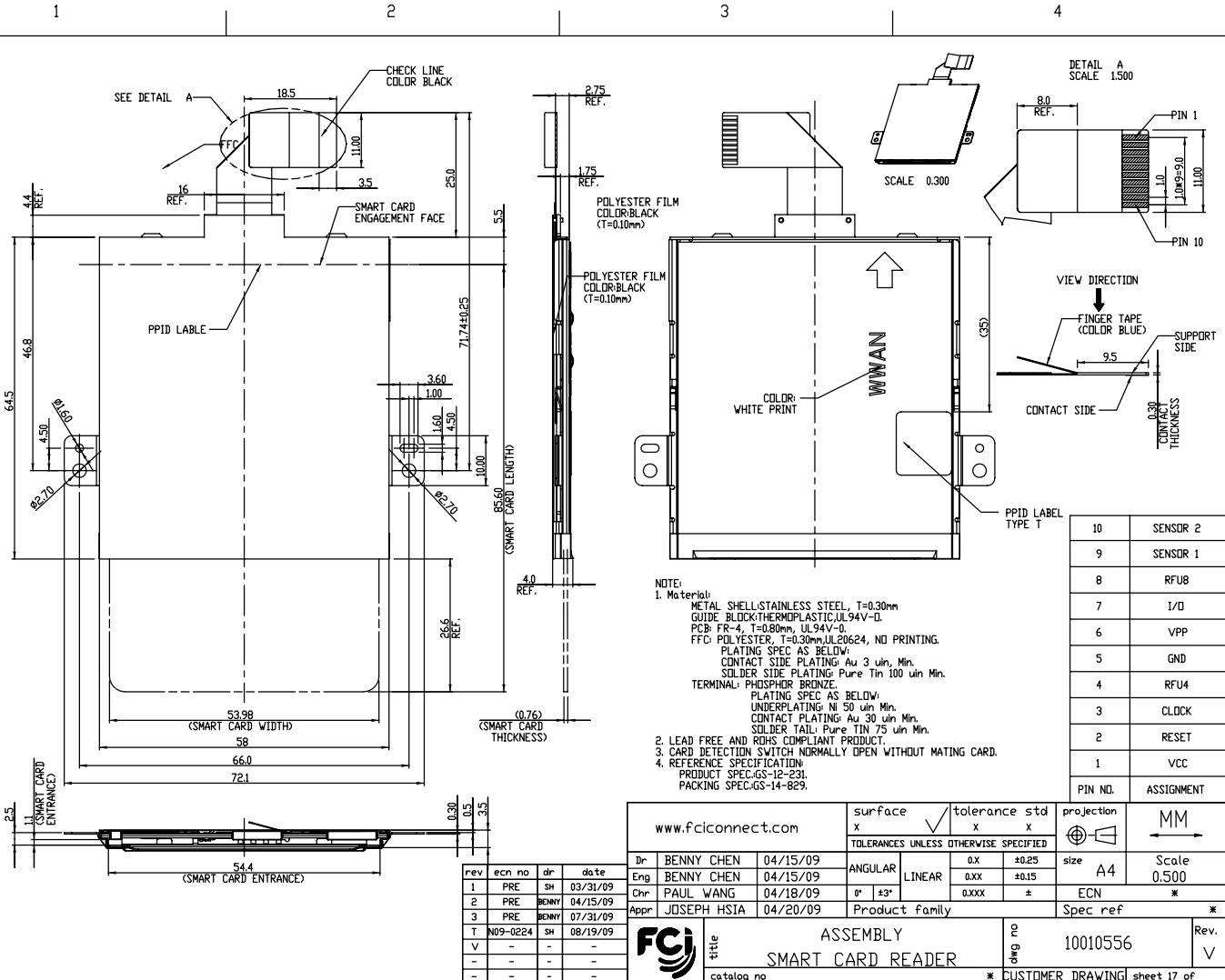
2

3 PDM: Rev:V

STATUS: Released

4 Printed: Mar 12, 2010

PART NUMBER
10010556-01SLF



PIN NO.	ASSIGNMENT
10	SENSOR 2
9	SENSOR 1
8	RFUB
7	I/D
6	VPP
5	GND
4	RFU4
3	CLOCK
2	RESET
1	VCC

www.fciconnect.com		surface	tolerance	std	projection	MM
Dr	BENNY CHEN	04/15/09	x	x	⊕	Scale
Eng	BENNY CHEN	04/15/09	ANGULAR	LINEAR	⊕	0.500
Chr	PAUL WANG	04/18/09	0° ±3°	0.0X ±0.25	⊕	ECN
Appr	JOSEPH HSIA	04/20/09	Product family	0.0XX ±	⊕	Spec ref
FCj		title		10010556		Rev.
ASSEMBLY		SMART CARD READER		* CUSTOMER DRAWING		sheet 17 of

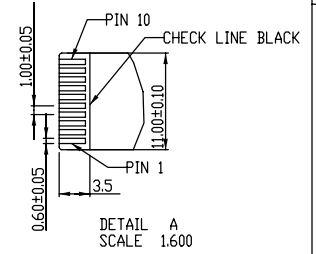
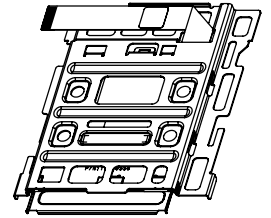
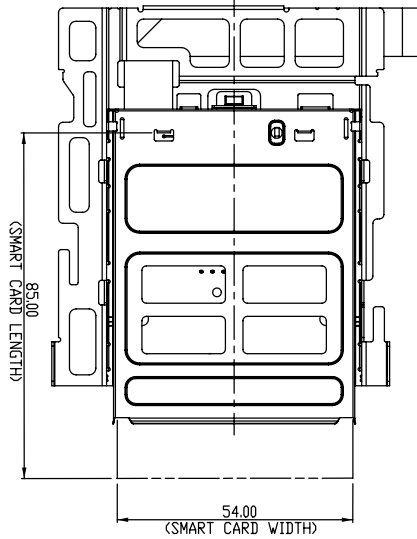
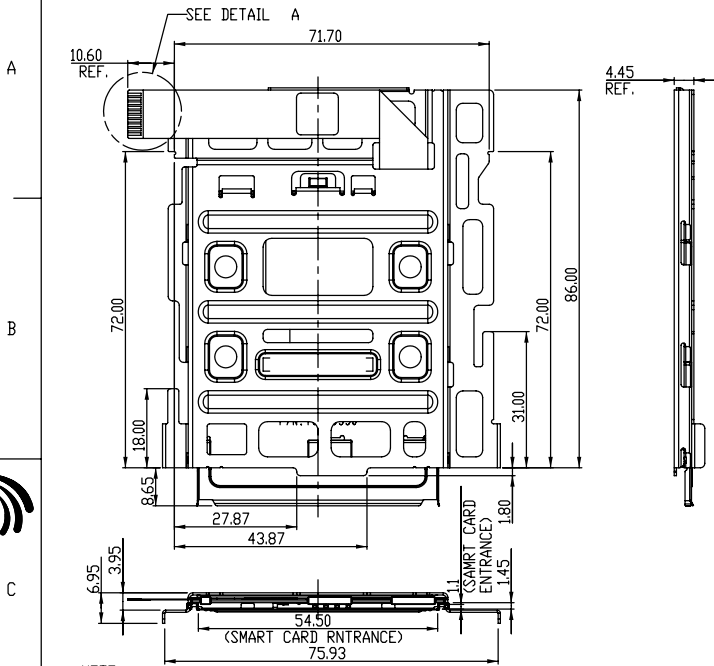
rev	ecn no	dr	date
1	PRE	SH	03/31/09
2	PRE	BENNY	04/15/09
3	PRE	BENNY	07/31/09
T	N09-0224	SH	08/19/09
V	-	-	-
-	-	-	-
-	-	-	-



Copyright FCj

3 PDM: Rev:V STATUS: Released 4 Printed: Mar 12, 2010

PRODUCT NO.
10010556-016LF



10	VCC	C1
9	RESET	C2
8	CLOCK	C3
7	RFU 4	C4
6	GND	C5
5	VPP	C6
4	I/O	C7
3	RFU 8	C8
2	SENSOR 2	
1	SENSOR 1	
PIN NO.	ASSIGNMENT	PIN NO. DEFINED BY ISO-7816

NOTE:
1. Material:
METAL SHELL: STAINLESS STEEL
BRACKET: STEEL
GUIDE BLOCK: THERMOPLASTIC, UL94V-0.
PCB: FR-4, T=0.80mm, UL94V-0.
FFC: POLYESTER, UL20624.
PLATING SPEC AS BELOW:
CONTACT SIDE PLATING: GOLD.
SOLDER SIDE PLATING: Pure Tin.
TERMINAL: COPPER ALLOY.
PLATING SPEC AS BELOW:
UNDERPLATING: NICKEL.
CONTACT PLATING: GOLD.
SOLDER TAIL: Pure TIN.

2. CARD DETECTION SWITCH NORMALLY OPEN WITHOUT MATING CARD
3. REFERENCE SPECIFICATION:
PRODUCT SPEC: GS-12-231.
PACKING SPEC: GS-14-829.

rev	ecn no	dr	date
V	-	-	-
-	-	-	-
-	-	-	-
-	-	-	-
-	-	-	-
-	-	-	-

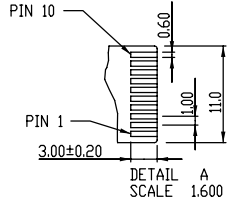
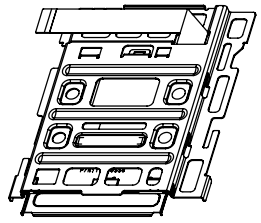
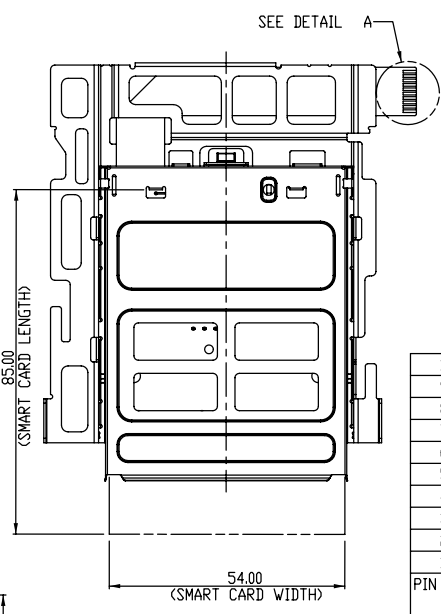
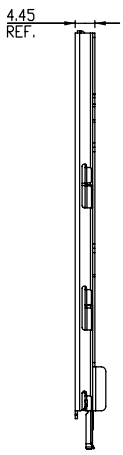
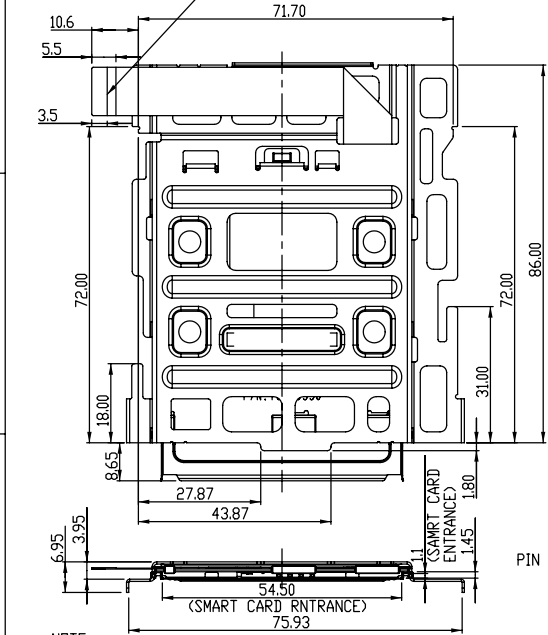
www.fciconnect.com		surface -	tolerance std	projection	
		TOLERANCES UNLESS OTHERWISE SPECIFIED		↔	
Dr	MIAD SH	04/14/09	ANGULAR	0X	±0.3
Eng	MIAD SH	04/14/09	LINEAR	0XX	±0.2
Chr	TAD DANIEL	04/14/09	0° ±2°	0XXX	±0.1
Appr	TAD DANIEL	04/14/09	Product family	-	Spec ref
FCJ			title	part no	Rev.
			SMART CARD READER	10010556	V
			catalog no	- CUSTOMER DRAWING	sheet 18 of



Copyright FCJ

PRODUCT NO.
10010556-017LF

CHECK LINE
COLOR BLACK



10	VCC	C1
9	RESET	C2
8	CLOCK	C3
7	RFU 4	C4
6	GND	C5
5	VPP	C6
4	I/O	C7
3	RFU 8	C8
2	SENSOR 2	
1	SENSOR 1	
PIN NO.	ASSIGNMENT	PIN NO. DEFINED BY ISO-7816

NOTE:
1. Material:
METAL SHELL: STAINLESS STEEL
BRACKET: STEEL
GUIDE BLOCK: THERMOPLASTIC, UL94V-0.
PCB: FR-4, T=0.80mm, UL94V-0.
FFC: POLYESTER, UL20624.
PLATING SPEC AS BELOW:
CONTACT SIDE PLATING: GOLD FLASH 0.076µm MIN.
SOLDER SIDE PLATING: MATTE TIN.
TERMINAL: COPPER ALLOY.
PLATING SPEC AS BELOW:
UNDERPLATING: NICKEL.
CONTACT PLATING: GOLD 0.76µm MIN.
SOLDER TAIL: MATTE TIN.
2. CARD DETECTION SWITCH NORMALLY OPEN WITHOUT MATING CARD
3. REFERENCE SPECIFICATION:
PRODUCT SPEC: GS-12-231.
PACKING SPEC: GS-14-829.

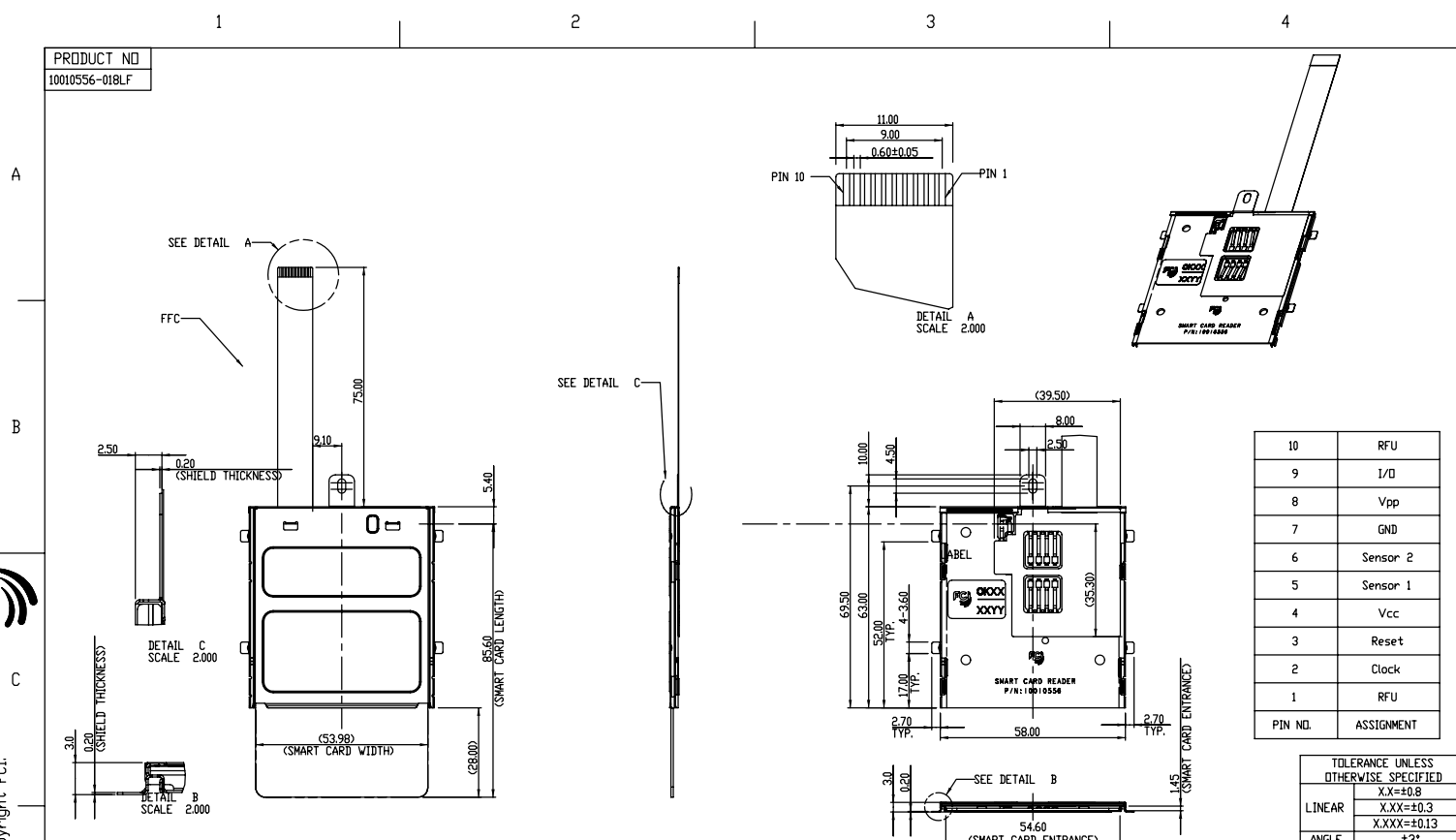
rev	ecn no	dr	date
1	N09-XXXX	SH	04/14/09
2	-	SH	07/16/09
V	-	-	-
-	-	-	-
-	-	-	-
-	-	-	-

www.fciconnect.com		surface -	tolerance std	projection	
Dr MIAD SH 04/14/09		TOLERANCES UNLESS OTHERWISE SPECIFIED		size A4	Scale 1.000
Eng MIAD SH 04/14/09		ANGULAR	LINEAR	ECN	
Chr TAD DANIEL 04/14/09		0° ±2°	0.0XX ±0.2	Product family	Spec ref
Appr TAD DANIEL 04/14/09			0.000 ±0.1		
FCj title SMART CARD READER		part no		10010556	Rev. V
catalog no		- CUSTOMER DRAWING		sheet 19 of	



Copyright FCj

PRODUCT NO
10010556-018LF



PIN NO.	ASSIGNMENT
10	RFU
9	I/O
8	Vpp
7	GND
6	Sensor 2
5	Sensor 1
4	Vcc
3	Reset
2	Clock
1	RFU

TOLERANCE UNLESS OTHERWISE SPECIFIED	
LINEAR	X.X=±0.8 X.XX=±0.3 X.XXX=±0.13
ANGLE	±3°

NOTE:
1. Material:
METAL SHELL: STAINLESS STEEL, T=0.20mm
PCB: FR-4, T=0.80mm
TERMINAL: PHOSPHOR BRONZE.
PLATING SPEC AS BELOW:
ALL OVER NICKEL UNDERPLATING
GOLD PLATING ON CONTACT SURFACE.
MATTIE TIN PLATING ON SOLDER TAIL.
FLEXIBLE FLAT CABLE: TOTAL LENGTH=124±2mm
PLATING SPEC AS BELOW:
CONTACT SURFACE: TIN PLATING.
SOLDER TAIL: TIN PLATING.
2. CARD DETECTION SWITCH NORMALLY OPEN WITHOUT MATING CARD
3. REFERENCE SPECIFICATION:
PRODUCT SPEC. GS 12-231
PACKING SPEC. GS 14-829

rev	ecn no	dr	date
1	-	SH	09/25/09
V	-	-	-
-	-	-	-
-	-	-	-
-	-	-	-
-	-	-	-

www.fciconnect.com		surface	tolerance std	projection	
Dr	MIAD SH	09/25/09	ANGULAR	LINEAR	size A4
Eng	MIAD SH	09/25/09	0° ±*	Product family	Scale 0.500
Chr	TAD DANIEL	09/25/09		Spec ref	ECN
Appr					
FCj		title SMART CARD READER		cat no	10010556
				Rev.	V
				sheet	20 of

Copyright FCj

REV F - 09-09-07