

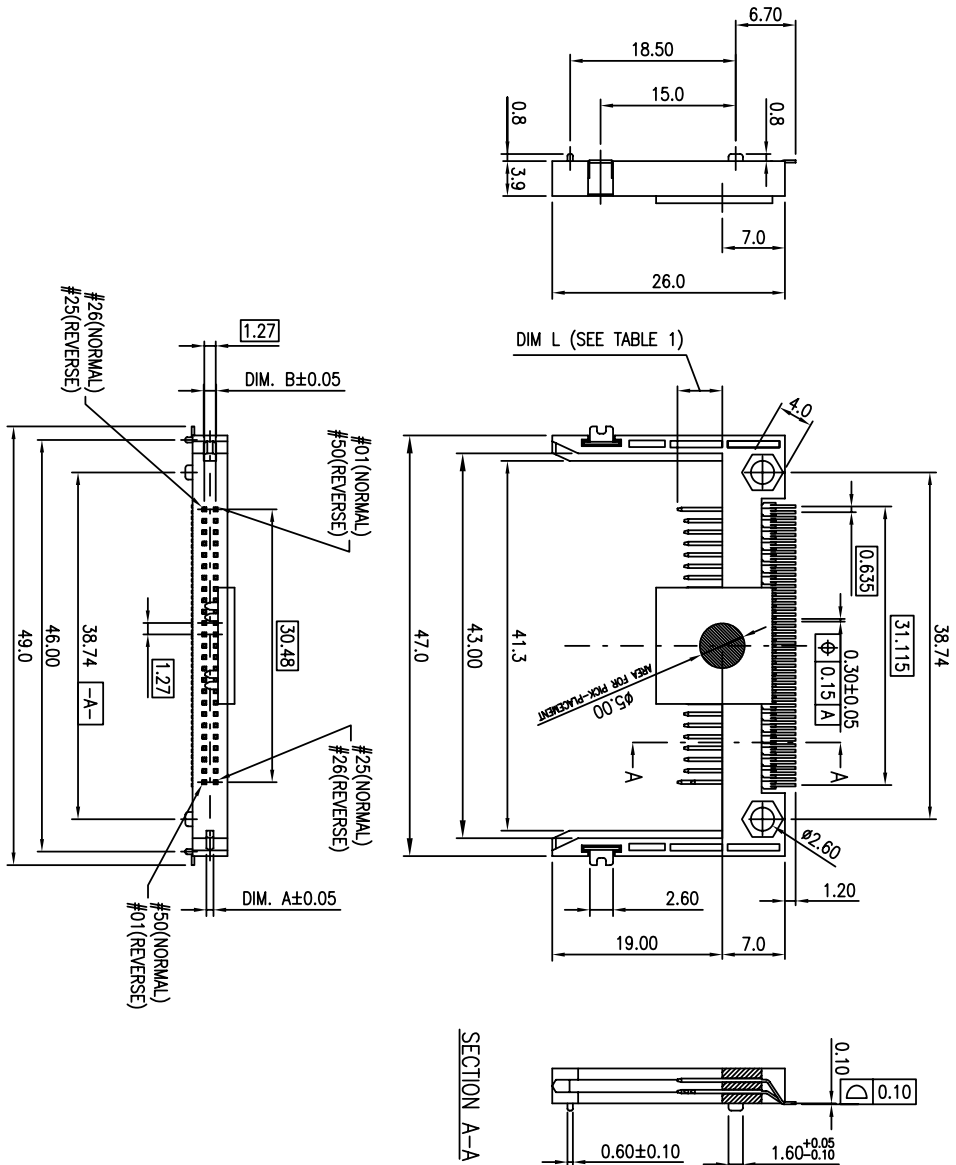
TABLE-1

Pin Type	Interface Dim.(In.)	Pin No.
Detect	3.50 mm (0.138 In.)	25,26
General	4.25 mm (0.167 In.)	The others
Power	5.00 mm (0.197 In.)	01,13,38,50

TABLE-2

PART NUMBERS	DIM. A	DIM. B
10038393-X050 Normal Type	0.80	1.40
10038393-X150 Reverse Type	1.40	0.80

Tolerance=±0.05



mod'l. code				tolerances unless otherwise specified				CUSTOMER COPY		title	
ltr	ecn no	dr	date	.X ±.38		projection		CF CARD HEADER		product: family	
A	T04-0327	J.H	7/16/04*	.XX ±.25		MM		CF		CF	
B	T04-0384	A.C.	10/06/04	.XXX ±.10		size		SLIM TYPE		family no	
C	T05-0057	A.C.	4/13/05	0' ±.2'		N/A		A4		10038393	
sheet				revision				sheet		product: family	
1				C				1		CF	
index				sheet				2		CF	

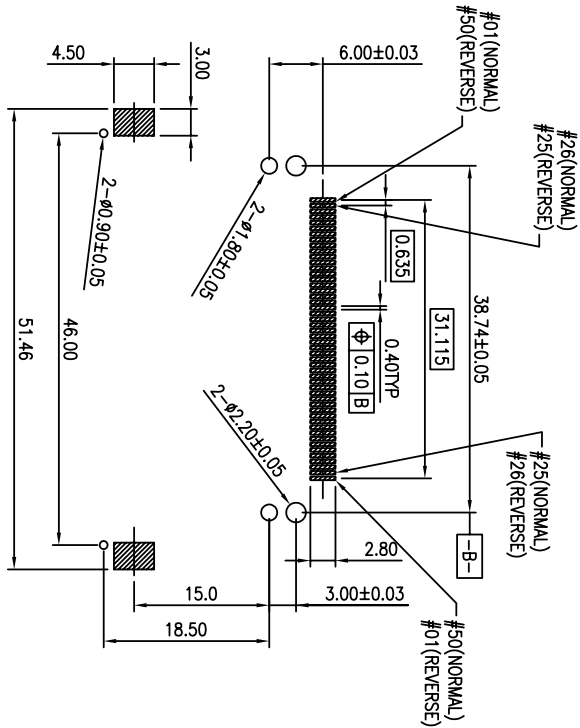
ACAD

cage code
22526



NOTES:

1. MATERIAL:
 - HOLD DOWN: COPPER ALLOY.
 - HOUSING: HIGH TEMPERATURE THERMOPLASTIC.
 - UL 94V-0 RATED.
 - TERMINAL: COPPER ALLOY.
2. TIN/LEAD PLATING SPEC:
 - HOLD DOWN : TIN/LEAD PLATED WITH 100U" MIN., OVER 50U" MIN. NICKEL UNDERPLATED.
 - TERMINAL : 50U"MIN. NICKEL UNDERPLATED OVER ALL 100U" MIN. TIN/LEAD PLATED IN SOLDERING AREA, SELECTIVE GOLD PLATED IN CONTACT AREA.
3. LEAD-FREE PLATING SPEC:
 - HOLD DOWN : PURE MATTE TIN PLATED WITH 100U" MIN., OVER 50U" MIN. NICKEL UNDERPLATED.
 - TERMINAL : 50U"MIN. NICKEL UNDERPLATED OVER ALL 100U" MIN. PURE MATTE TIN PLATED IN SOLDERING AREA, SELECTIVE GOLD PLATED IN CONTACT AREA.
4. THE HOUSING WILL WITHSTAND EXPOSURE TO 260 DEGREE C PEAK TEMPERATURE FOR 10 SECONDS IN A CONNECTION, INFRARED OR VAPOR PHASE REFLOW OVEN.
5. PRODUCT SPEC NO: GS-12-240. PACKAGE SPEC NO: GS-14-961.
6. THIS PRODUCT (10038393-XXXXXXLF) MEETS THE EUROPEAN UNION DIRECTIVE AS DESCRIBED IN GS-22-008, SUB CLAUSE 3.1 (DIRECTIVE 2002/95/EC).
7. PART NUMBER DESCRIPTION:
 - 10038393-X X 50 X X X X
 - LEAD-FREE PLATING OPTION:
 - BLANK: TIN/LEAD PLATING SPEC (SEE NOTE 2).
 - LF: LEAD-FREE PLATING SPEC (SEE NOTE 3).
 - PICK-UP CAP OPTION:
 - BLANK: WITHOUT PICK-UP CAP.
 - P: WITH PICK-UP CAP.
 - PACKAGING METHOD:
 - BLANK: PVC TRAY.
 - T: TAPE & REEL(ONLY FOR THE PART WITH PICK-UP CAP)
 - KEY TYPE, SEE TABLE-2.
 - 0: NORMAL TYPE
 - 1: REVERSE TYPE
 - CONTACT AREA PLATING:
 - D: 15U" GOLD.
 - E: 30U" GOLD.



RECOMMENDED P.C.B. LAYOUT (General Tolerance±0.05)

mod'l. code		tolerances unless otherwise specified		CUSTOMER COPY		title	
ltr	ecn no	dr	date	linear	projection	product family	code
C				.XX ±.25	MM	CF CARD HEADER	
				.XXX ±.10		SLIM TYPE	
				Ø ±.2		CF	
				dr	size	dwg no	sheet
				JASON HSU	2/23/04*	10038393	2 of 2
				engr	2/23/04*		
				JASON HSU	2/23/04*		
				chr	2/23/04*		
				STERLING LIN	2/23/04*		
				appr	2/23/04*		
				JAMES HSU	2/23/04*		
sheet	revision						
index	sheet	1	2				

ACAD

cage code
22526