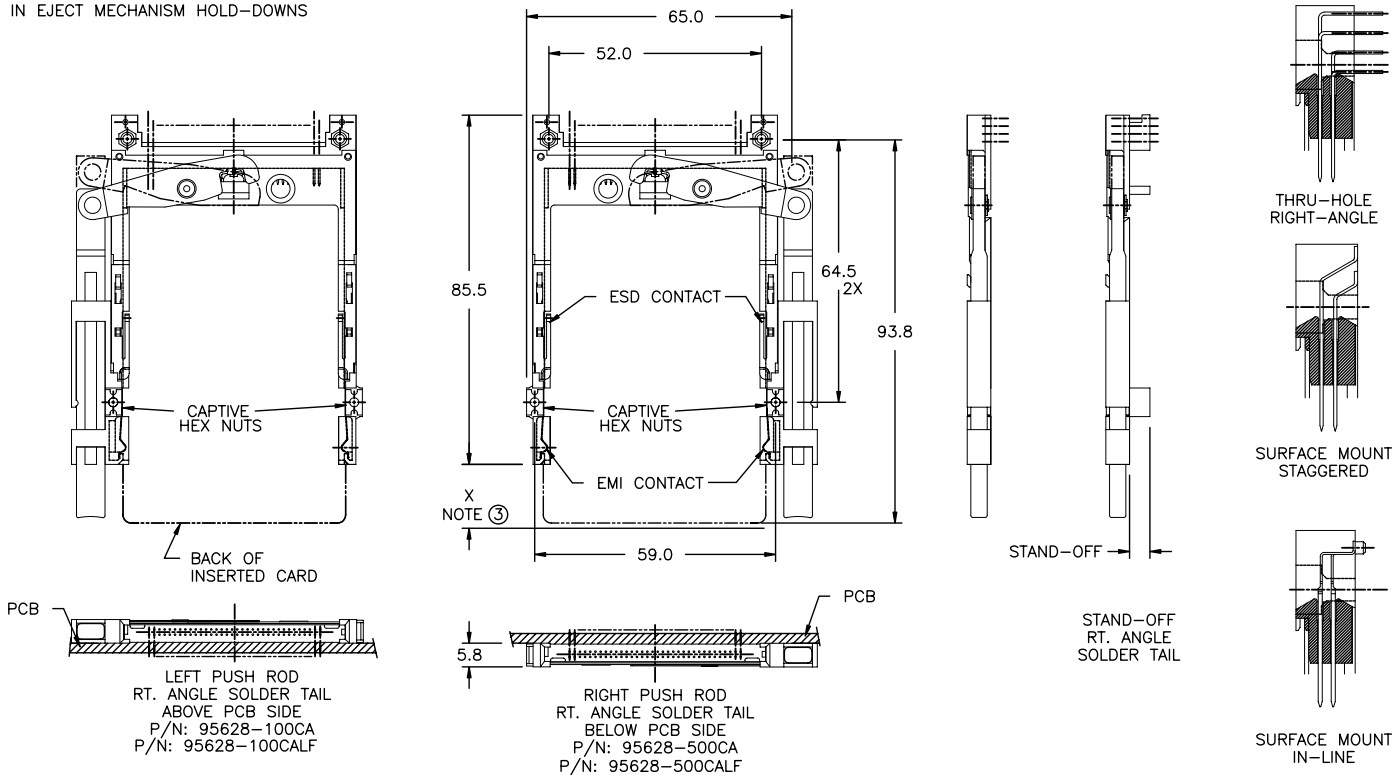


Tous droits strictement réservés. Reproduction ou communication a des tiers interdite sous quelque forme que ce soit sans autorisation écrite du propriétaire. Propriété de ©BERG ELECTRONICS. Droits de reproduction BERG ELECTRONICS INC.

All rights strictly reserved. Reproduction or issue to third parties in any form whatever is not permitted without written authority from the proprietor. Property of ©BERG ELECTRONICS. Copyright BERG ELECTRONICS INC.

PCMCIA COMPONENTS:  
SINGLE DECK ASSEMBLY WITH CAPTIVE HEX NUTS  
IN EJECT MECHANISM HOLD-DOWNS



- REFER TO HEADER DRAWING 92140 AND EJECT MECHANISM 94307 FOR ADDITIONAL DIMENSIONS, MATERIAL, AND PLATING INFORMATION.
- REFER TO TA-946 FOR PCB LAYOUT AND PCB KEEP-OUT AREA.

mat'l. code				tolerances unless otherwise specified		CUSTOMER COPY		FCI	
ltr	ecr no	dr	date	linear	.X ±.3	projection	www.fciconnect.com		
A	V50882	SSD	6/30/95		.XX ±.13		title		
B	V50926	MRC	7/26/95		.XXX ±.051		68 POS EJECT HEADER ASSY WITH CAPTIVE HEX NUTS		
C	V71484	RHG	10/13/97	angles	0° ±2°		product family		code
D	N05-0074	WB	03/16/05	dr	D. BRANN 6/30/95		MCS		-
				engr	D. BRANN 6/30/95		size		sheet
				chr	D. BRANN 6/30/95	A4		1 of 3	
				appd	D. BRANN 6/30/95	95628			
sheet index	revision sheet	D	D	D		scale	3/4		
		1	2	3					

form no. 7530-001-103

PDM: Rev:D 3 STATUS Released 2526, Oct 12, 2010

PCMCIA COMPONENTS: SINGLE DECK ASSEMBLY WITH CAPTIVE HEX NUTS IN EJECT MECHANISM HOLD-DOWNS

PCB SIDE ①	PUSH ROD LOCATION ①	SOLDER TAIL ②	STANDOFF (MM)	HEADER PART NUMBER 92140-###	AND MECHANISM P/N 94307-##XY ③	TO MAKE FINAL ASSY PART NUMBER
ABOVE	RIGHT	R/A	NONE	92140-000	94307-00XY	95628-000XY
ABOVE	LEFT	R/A	NONE	92140-000	94307-10XY	95628-100XY
BELOW	RIGHT	R/A	NONE	92140-500	94307-10XY	95628-500XY
BELOW	LEFT	R/A	NONE	92140-500	94307-00XY	95628-600XY
ABOVE	RIGHT	R/A	2	92140-040	94307-02XY	95628-020XY
ABOVE	LEFT	R/A	2	92140-040	94307-12XY	95628-120XY
BELOW	RIGHT	R/A	2	92140-540	94307-12XY	95628-520XY
BELOW	LEFT	R/A	2	92140-540	94307-02XY	95628-620XY
ABOVE	RIGHT	R/A	4	92140-010	94307-04XY	95628-040XY
ABOVE	LEFT	R/A	4	92140-010	94307-14XY	95628-140XY
BELOW	RIGHT	R/A	4	92140-510	94307-14XY	95628-540XY
BELOW	LEFT	R/A	4	92140-510	94307-04XY	95628-640XY
ABOVE	RIGHT	R/A	5	92140-020	94307-05XY	95628-050XY
ABOVE	LEFT	R/A	5	92140-020	94307-15XY	95628-150XY
BELOW	RIGHT	R/A	5	92140-520	94307-15XY	95628-550XY
BELOW	LEFT	R/A	5	92140-520	94307-05XY	95628-650XY
ABOVE	RIGHT	SMT-IL	NONE	92140-002	94307-00XY	95628-002XY
ABOVE	LEFT	SMT-IL	NONE	92140-002	94307-10XY	95628-102XY
BELOW	RIGHT	SMT-IL	NONE	92140-502	94307-10XY	95628-502XY
BELOW	LEFT	SMT-IL	NONE	92140-502	94307-00XY	95628-602XY
ABOVE	RIGHT	SMT-STG	NONE	92140-001	94307-00XY	95628-001XY
ABOVE	LEFT	SMT-STG	NONE	92140-001	94307-10XY	95628-101XY
BELOW	RIGHT	SMT-STG	NONE	92140-501	94307-10XY	95628-501XY
BELOW	LEFT	SMT-STG	NONE	92140-501	94307-00XY	95628-601XY
ABOVE	RIGHT	R/A	NONE	92140-000	94307-00DA	95628-000DA ④


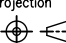
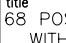
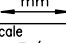
NOTES:( CONTINUOUS ON SHEET 3)

① PCB SIDE AND PUSHROD LOCATION ARE AS APPEARS INSTALLED.

② SOLDER TAIL KEY:  
R/A = RIGHT ANGLE PIN-THROUGH-HOLE  
SMT-STG = STAGGERED SURFACE MOUNT  
SMT-IL = SURFACE MOUNT IN-LINE (SINGLE ROW)

③ X = PUSHROD LENGTH FROM END OF GUIDE RAIL WHEN CARD INSERTED = C = 13.0mm (LENGTH CURRENTLY TOOLED)  
Y = PUSHROD COLOR = A = BLACK (COLOR CURRENTLY AVAILABLE)  
X AND Y DESIGNATE THE PUSHROD. THEY MUST BE THE SAME LETTER IN THE EJECT MECHANISM AND ASSEMBLY PART NUMBERS.

EXAMPLE: MECHANISM ASSEMBLY 94307-00CA IS USED IN 95628-000CA

mat'l. code				tolerances unless otherwise specified		CUSTOMER COPY		 www.fciconnect.com		
ltr	ecr no	dr	date	linear	.X ±.3	 projection	 title	68 POS EJECT HEADER ASSY WITH CAPTIVE HEX NUTS		
D					.XX ±.13			 mm	product family MCS	code -
				angles	.XXX ±.051					
				dr	0' ±2'	95628				
				enr	D.BRANN 6/30/95	cage code 2526				
				chr	D.BRANN 6/30/95	STATUS Released				
				appd	D.BRANN 6/30/95	2526				
sheet index	revision sheet					2526				

Tous droits strictement reserves. Reproduction ou communication a des tiers interdite sous quelque forme que ce soit sans autorisation ecrite du proprietaire. Propriete de ©BERG ELECTRONICS. Droits de reproduction BERG ELECTRONICS INC.

All rights strictly reserved. Reproduction or issue to third parties in any form whatever is not permitted without written authority from the proprietor. Property of ©BERG ELECTRONICS Copyright BERG ELECTRONICS INC.

PCMCIA COMPONENTS: SINGLE DECK ASSEMBLY WITH CAPTIVE HEX NUTS IN EJECT MECHANISM HOLD-DOWNS

PCB SIDE ①	PUSH ROD LOCATION ①	SOLDER TAIL ②	STANDOFF (MM)	HEADER PART NUMBER 92140-###LF	AND MECHANISM P/N 94307-##XY ③	TO MAKE FINAL ASSY PART NUMBER
ABOVE	RIGHT	R/A	NONE	92140-000LF	94307-00XY	95628-000XYLF
ABOVE	LEFT	R/A	NONE	92140-000LF	94307-10XY	95628-100XYLF
BELOW	RIGHT	R/A	NONE	92140-500LF	94307-10XY	95628-500XYLF
BELOW	LEFT	R/A	NONE	92140-500LF	94307-00XY	95628-600XYLF
ABOVE	RIGHT	R/A	2	92140-040LF	94307-02XY	95628-020XYLF
ABOVE	LEFT	R/A	2	92140-040LF	94307-12XY	95628-120XYLF
BELOW	RIGHT	R/A	2	92140-540LF	94307-12XY	95628-520XYLF
BELOW	LEFT	R/A	2	92140-540LF	94307-02XY	95628-620XYLF
ABOVE	RIGHT	R/A	4	92140-010LF	94307-04XY	95628-040XYLF
ABOVE	LEFT	R/A	4	92140-010LF	94307-14XY	95628-140XYLF
BELOW	RIGHT	R/A	4	92140-510LF	94307-14XY	95628-540XYLF
BELOW	LEFT	R/A	4	92140-510LF	94307-04XY	95628-640XYLF
ABOVE	RIGHT	R/A	5	92140-020LF	94307-05XY	95628-050XYLF
ABOVE	LEFT	R/A	5	92140-020LF	94307-15XY	95628-150XYLF
BELOW	RIGHT	R/A	5	92140-520LF	94307-15XY	95628-550XYLF
BELOW	LEFT	R/A	5	92140-520LF	94307-05XY	95628-650XYLF
ABOVE	RIGHT	SMT-IL	NONE	92140-002LF	94307-00XY	95628-002XYLF
ABOVE	LEFT	SMT-IL	NONE	92140-002LF	94307-10XY	95628-102XYLF
BELOW	RIGHT	SMT-IL	NONE	92140-502LF	94307-10XY	95628-502XYLF
BELOW	LEFT	SMT-IL	NONE	92140-502LF	94307-00XY	95628-602XYLF
ABOVE	RIGHT	SMT-STG	NONE	92140-001LF	94307-00XY	95628-001XYLF
ABOVE	LEFT	SMT-STG	NONE	92140-001LF	94307-10XY	95628-101XYLF
BELOW	RIGHT	SMT-STG	NONE	92140-501LF	94307-10XY	95628-501XYLF
BELOW	LEFT	SMT-STG	NONE	92140-501LF	94307-00XY	95628-601XYLF
ABOVE	RIGHT	R/A	NONE	92140-000LF	94307-00DA	95628-000DALF ④

NOTES: ( CONTINUOUS FROM SHEET 2)

④ X = 15.2mm

- IF LEAD FREE P/N. THE HOUSING WILL WITHSTAND EXPOSURE TO 260°C PEAK TEMPERATURE  
SOLDER TAIL : SMT-IL, SMT-STG CAN RESIST 40 SECONDS IN A CONVECTION, INFRA-RED OR VAPOR PHASE REFLOW OVEN.  
SOLDER TAIL : R/A CAN RESIST 10 SECONDS IN A WAVE SOLDER APPLICATION WITH A 1.00MM MINIMUM THICK CIRCUIT BOARD.
- IF LEAD FREE P/N.THE PRODUCT MEETS EUROPEAN UNION DIRECTIVES AND OTHER COUNTRY REGULATIONS AS DISCRIBLED IN GS-22-008
- LEAD FREE P/N PACKAGING MEETS GS-14-920 SPECIFICATION

mat'l. code				tolerances unless otherwise specified				CUSTOMER COPY		FCI www.fciconnect.com	
ltr	ecn no	dr	date	linear	.X ±.3		projection	title	68 POS EJECT HEADER ASSY WITH CAPTIVE HEX NUTS		
D					.XX ±.13				product family	MCS	
				angles	.XXX ±.051		← mm →	size		dwg no	95628
				dr	0° ±2°				scale		A4
				enr	D.BRANN 6/30/95		sheet index	revision sheet			
				chr	D.BRANN 6/30/95				cage code		2526
				appd	D.BRANN 6/30/95		date	12, 2010			

PDM: Rev:D

STATUS Released 2526 12, 2010

All rights strictly reserved. Reproduction or issue to third parties in any form  
 whatsoever is not permitted without written authority from the proprietor.  
 Property of ©BERG ELECTRONICS Copyright BERG ELECTRONICS INC.

Tous droits strictement reserves. Reproduction ou communication a des tiers interdite  
 sous quelque forme que ce soit sans autorisation ecrite du proprietaire.  
 Propriete de ©BERG ELECTRONICS. Droits de reproduction BERG ELECTRONICS INC.

