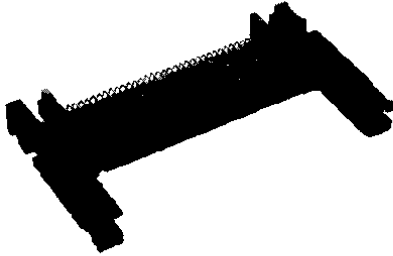


Pin Header, Single Slot, Standard Height, Top Board Surface-Mount

68 Positions

Part Number 535651-1



Pin Length (L)	Pin Locations
5.00 .197	1, 17, 34, 35, 51, 68
4.25 .167	All Others Not Listed
3.50 .138	36, 67

Material and Finish:

Housing — Liquid crystal polymer. Black

Contacts — Brass; duplex plated C.00076 [.00030] minimum gold on mating area, 0.00381 [.00150] minimum tin-lead on solder tails, with entire contact underplated 0.00127 [.00050] minimum nickel

Related Product Data:

Mating Receptacle Assemblies — Any 68-position receptacle assembly when mounted in a PC/MCIA card frame

Guide Rails — page 20

ESD/EMI Card Guide Assembly — page 21

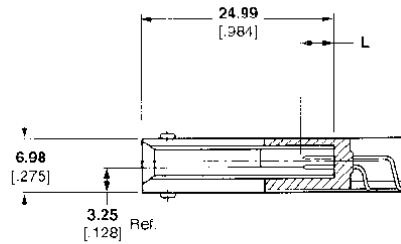
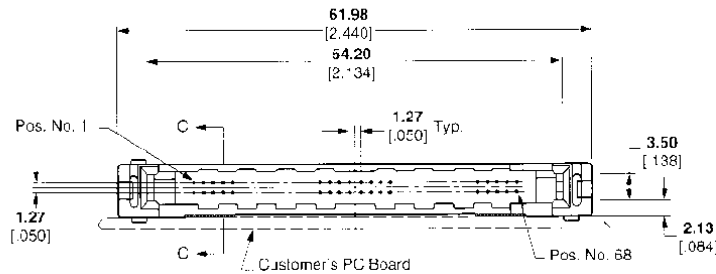
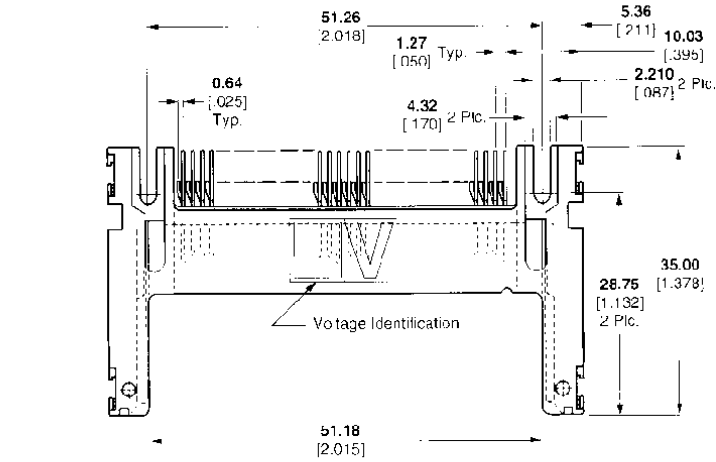
Ejectors — pages 22 & 23

Performance Data — page 80

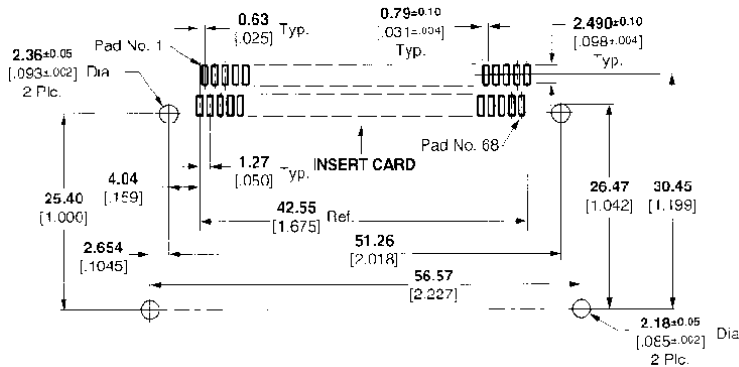
Technical Documents

(Page 80):

AMP Product Specification
108-1469



Section C - C



Recommended PC Board Layout

Note: Two size M2 [2-56 UNC] screws (Customer supplied) are required for fastening the connector to the PC board.