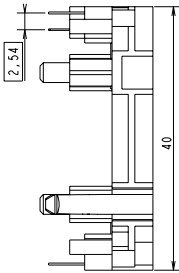
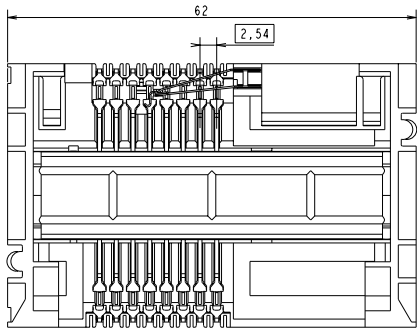
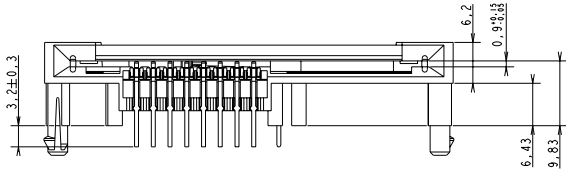
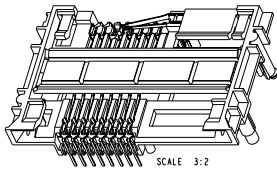
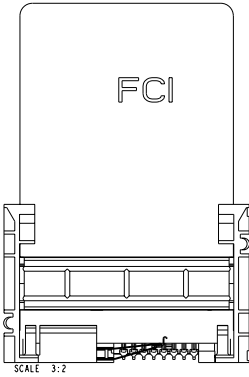


# 7334L2622F13LF

Lead Free Version (Optional)

Durability  
 0: 2500 Mating Cycles  
 2: 10000 Mating Cycles  
 5: 100000 Mating Cycles

Number of contacts :  
 2: 8 contacts ISO  
 3: 16 contacts ISO + AFNOR



General Tolerances: ± 0.2 mm

**GENERAL:**  
 This L26 connector uses a "sliding" contact technology suitable for most applications.  
 It has been designed for easy mounting on the PCB.

**ELECTRICAL PROPERTIES:**  
 Insulation resistance : 5000 MΩ min  
 Dielectric withstanding : 750 Vrms min  
 Current carrying capacity : 10µA min. 1A max  
 Contact resistance : 100mΩ max  
 Card sensor type : Normally closed

**MECHANICAL PROPERTIES:**  
 Contact Normal force : 0.6 N max (EMV Standard)  
 Insertion force : 10 N max  
 Extraction force : 1 N min

**MATERIAL:**  
 Housing : Thermoplastic, Colour Black, Rated UL94V0  
 Contacts and switch : Copper Alloy  
 Plating : Gold over Nickel on contact area  
 Matte Tin over Nickel on solder tails  
 Bare edge allowed

**ENVIRONMENT:**  
 Operating temperature: -20°C / +70°C  
 Storage temperature: -40°C / +85°C  
 Printed Circuit Board thickness : 1.6mm

**REFERENCE DOCUMENTS:**  
 Product specification VGN 11596  
 Packaging Specification VGN 11619

**LEAD FREE VERSION:**

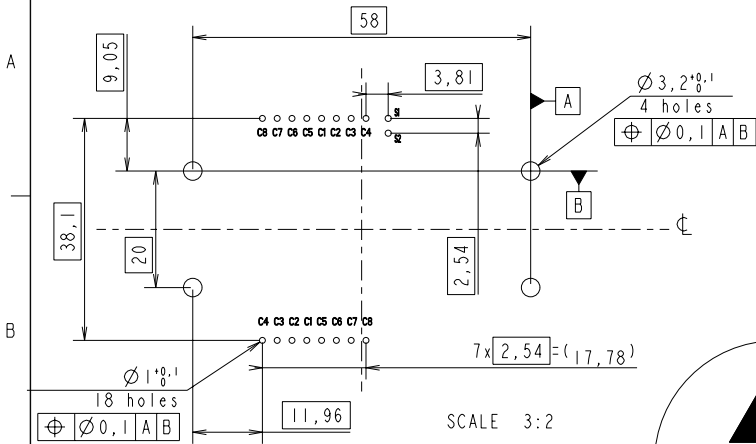
\*This product meets European Union Directives and other country regulations as described in GS-22-008\*

The housing will withstand exposure to 260°C peak temperature for 10seconds in a wave solder application with a 1.6mm minimum thick circuit board.  
 Use protective adhesive tape (Kapton or teflon) or protective metallic devices on the areas which are directly exposed to wave soldering as it is used in classical leaded wave soldering

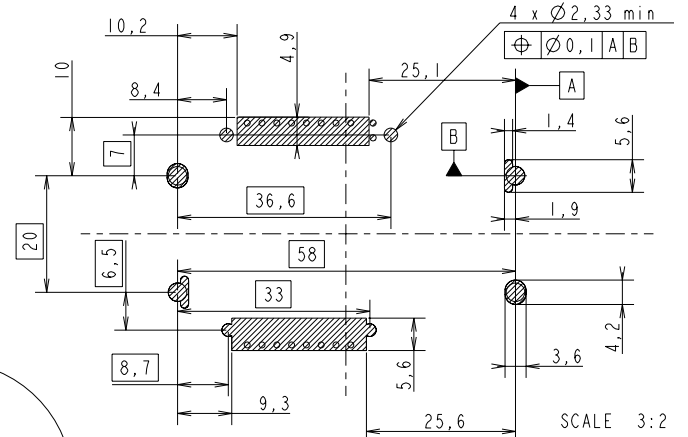
**EUROPEAN PROJECTION**

www.fciconnect.com		surface	tolerance std	projection	mm
		150 1302	150 404 - 150 1101		
TOLERANCES UNLESS OTHERWISE SPECIFIED					
Dr	N. TWINCY	2002/04/30	ANGULAR	0.3	size
Eng	F. TISSERAND	2002/04/30	LINEAR	0.xx	A2
Chr	RAMESH.P.K	2009/04/15	Ø"	0.xxx	ECN
Appr	S.S.CHERIAN	2009/04/15	Product family	SMART CARDS	Spec ref
SEE NOTES					
D	106-0884	SSC	2008/08/21	L26 TYPE F13	Rev.
E	106-0783	SSC	2008/10/05		VJW.54825
F	109-9857	SSC	2009/04/15		F
catalog no		See Table		sheet 1 of 2	

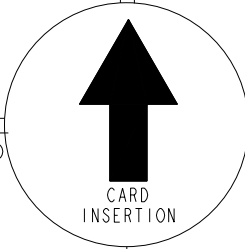
**RECOMMENDED PCB LAYOUT** CONTACT CONFIGURATION : ISO & AFNOR  
(CONNECTOR SIDE)



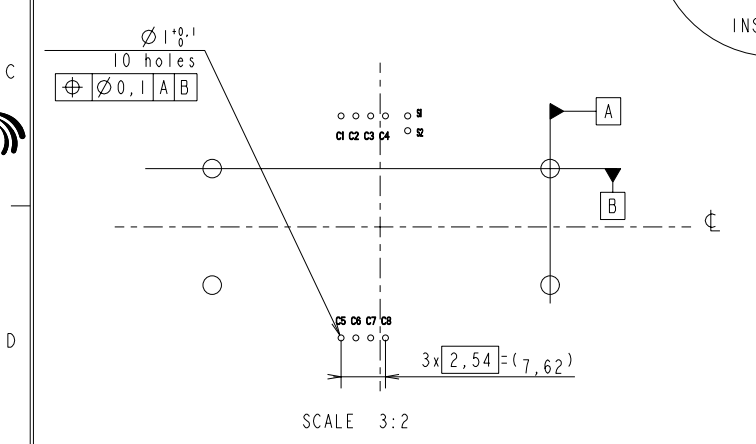
**STANDARD LAYOUT FOR 'KEEP OUT ZONE' (Connector Side)**



Hatching area might be free of components  
Maximum free space outside of these zones = 6.4 mm



**RECOMMENDED PCB LAYOUT** CONTACT CONFIGURATION : ISO  
(CONNECTOR SIDE)



EUROPEAN PROJECTION

www.fciconnect.com			surface ISO 1302	tolerance std ISO 406 ISO 1101	projection mm
			TOLERANCES UNLESS OTHERWISE SPECIFIED		mm
Dr	N. TWINCY	2002/04/30	ANGULAR	0.X	±
Eng	F. TISSERAND	2002/04/30	LINEAR	0.XX	±
Chr	RAMESH.P.K	2009/04/15	0° ±°	0.XXX	±
Appr	S.S.CHERIAN	2009/04/15	Product family	SMART CARDS	Spec ref SEE NOTES
title L26 TYPE F13			dwg no VJW_54825		Rev. F
catalog no			See Table		sheet 2 of 2

Copyright FCI