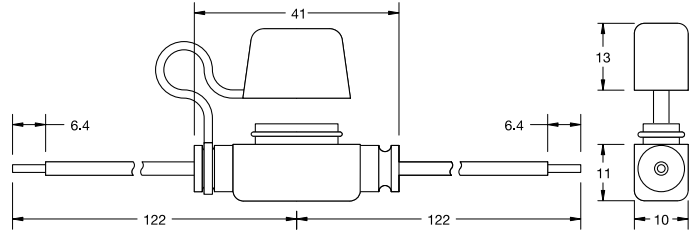


Blade Fuseholders - In-Line Splash-Waterproof Fuseholder for MINI® Style Blade Fuse

RoHS



Used with MINI / FK1 Fuse 1 to 20A or 25A and 30A. Supplied with two 4.78" / 122mm wire leads. Includes protective cover for harsh environment.

Zur Benutzung mit MINI/FK1 Sicherungen von 1A bis 20A oder 25A und 30A. Lieferung mit zwei 4.78" / 122mm langen Leitungen. Die Schutzhaube erlaubt den Einsatz in rauher Umgebung

| Part Number Artikel-Nr. | Description Beschreibung | Fuse Rating Sicherungs- Nennstrom |
|----------------------------|---|---|
| 0FHM0001_ | 14AWG/2.1mm ² stranded black wire | 20 A |
| 0FHM0002_ | 12AWG/3.3mm ² stranded orange wire | 30 A |

Wire length, color and diameter can be customized upon request. Customization requires minimum order quantities depending on nature of modifications.

Last figure of part number = packaging code, see Section "Packaging Index," pg. 157.

Please contact your sales representative for details.