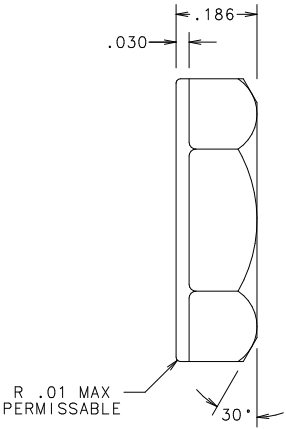
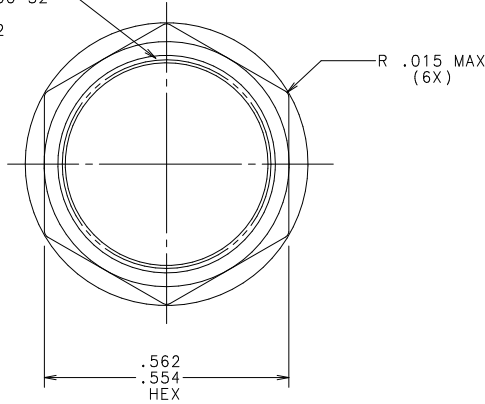


THREADS: (2B)
SPECIAL: DOUBLE-LEAD .500-32
MINOR DIA.: .466/.474
PITCH DIA.: .4797/.4842
MAJOR DIA.: .500



NOTES:

1. NUT IS TO ACCEPT A TORQUE OF 18 LB.-IN. WITHOUT CRACKING OR STRIPPING
2. THE STARTING POINT OF THE LEAD THREAD CANNOT EXCEED .030 FROM SURFACE **A**.
3. "FLASH EXTENDING ABOVE SURFACE **A** CANNOT EXCEED .006 HIGH AND .004 THICK.

PACKAGING NOTES:

PLACE IN TOTE -580599 LINED WITH POLY BAG -890-750 LABEL TOTE WITH -914-796 PRINTED PER GENERAL LABEL SPEC. LS-000003.

NO	COMPONENT NO	DESCRIPTION	QTY/M	U/M
1	057295	RYNITE 415 HP	2.25	LB

BILL OF MATERIAL

MATERIAL		FINISH	
COPIES TO	DRW	DATE	SCALE
1	9 18	KAM	1/23/97
2	10 19	CHK	4:1
3	12 20	DATE	SUPER DRW
4	13 21	DATE	RAW STK WT
5	14 23	APPD	
6	15 33		LBS/M
7	16 43		TOLERANCE UNLESS OTHERWISE SPECIFIED
8	17 53		TWO PLACE DEC ±.01 FRACTION ±
			THREE PLACE DEC ±.005 ANGULAR ±1°

TITLE
HEX NUT, MOLDED

UNLESS OTHERWISE SPECIFIED, DIMENSIONS DO NOT INCLUDE PLATING.

CPK DENOTES CRITICAL CHARACTERISTICS.

CPK DENOTES CPK DIMENSIONS - MINIMUM CPK VALUE

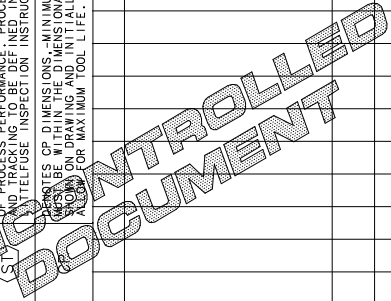
CPK DENOTES A CHARACTERISTIC THAT PROVIDES AN INDICATION OF PROCESS PERFORMANCE. PROCEDURE FOR MEASUREMENT (S) AND TRACKING TO BE DEFINED IN

STANDARD TAPUSE INSPECTION INSTRUCTIONS.

CPK DENOTES CP DIMENSIONS - MINIMUM CP VALUE

CPK DENOTES CPK DIMENSIONS - MINIMUM CP VALUE

WHICH ARE CRITICAL TO FUNCTION AND MUST BE CONTROLLED TO ALLOW FOR MAXIMUM TOOL LIFE.



REVISION	DRWG NO.
M	903-097
Littelfuse DES PLAINES, ILLINOIS 60016	