

D-Series



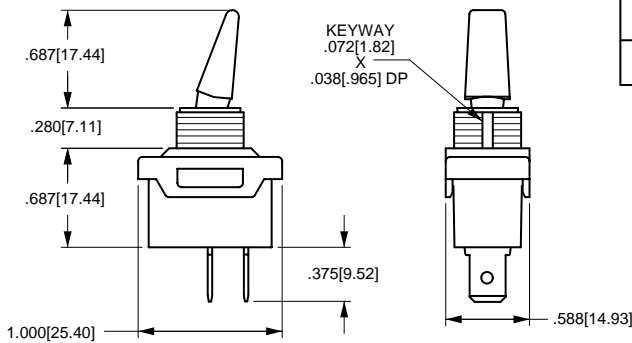
The D-Series toggle switches are single pole and have ratings up to 20 amps and 1-1/2 horsepower. These switches have a nylon toggle and base, and are also available with integrated wire leads.

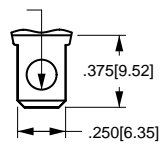
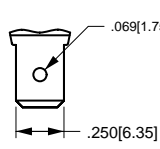
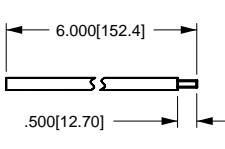
Specifications

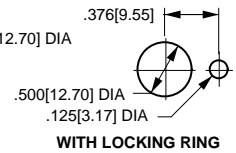
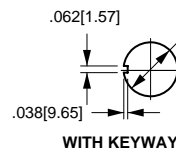
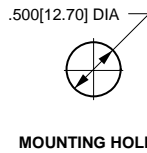
- Certifications*: UL, CSA
- Dielectric Strength: 1,000 V (minimum)
- Insulation Resistance: 100 Megohms (minimum)
- Base Material: Nylon
- Actuator Material: Nylon
- Bushing Material: Polycarbonate


* Due to ongoing technological advances, consult factory for certification specifics.

Dimensional Specifications: in. [mm]



		
SOLDER LUG	.250 TAB (Q.C.)	INTEGRATED WIRE LEAD (no exposed conductors)
TERMINAL TYPE		



D	A	22	1	-	P	B	-	B
SERIES	RATING		TERMINATION		TOGGLE STYLE		TOGGLE COLOR¹	
D SINGLE POLE TOGGLE	10 5A 250VAC 10A 125VAC 1/2HP 125-250VAC	11 5A 250VAC 10A 125VAC	0 SOLDER LUG 1 .250TAB (QC) 5 WIRE LEAD		B BAT P PADDLE	B BLACK W WHITE		B BLACK W WHITE
CIRCUIT	22 10A 250VAC 20A 125VAC 1 1/2HP 125-250VAC					BUSHING¹		
A ON-NONE-OFF B ON-NONE-ON C ON-OFF-ON	23 10A 250VAC 20A 125VAC	60 3A 250VAC 6A 125VAC 1/4HP 125-250VAC				B BLACK W WHITE		

NOTES:
 Shading indicates standard configurations.
 Available with neoprene seal. Consult factory.
 1 Custom colors are available. Consult factory.