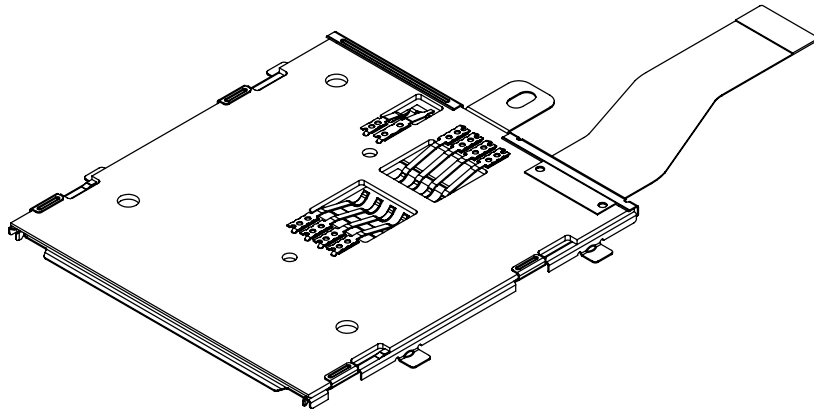


Tous droits strictement réservés. Reproduction ou communication, en des liens interdite sous quelque forme que ce soit sans autorisation écrite du propriétaire. Propriété de © FCI ELECTRONICS. Droits de reproduction FCI ELECTRONICS INC.

All rights strictly reserved. Reproduction or issue to third parties, in any form whatever is not permitted without written authority from the proprietor. Copyright FCI ELECTRONICS INC. Property of © FCI ELECTRONICS

PRODUCT NO.	FPC	PACKAGING	COMPONENTS	LEAD FREE	PCB COLOR
10010556-002LF	10010559-002LF	10017475-02-002	ELEC. PARTS	YES	BLUE
10010556-003LF	10105325-001	10017475-02-009	N/A	YES	BLACK
10010556-004LF	10056226-002LF(FFC)	10017475-02-004	N/A	YES	BLUE
10010556-006LF	10058983-001LF	10017475-02-003	N/A	YES	BLACK
10010556-005LF	10056226-003LF(FFC)	10017475-02-004	N/A	YES	BLUE
10010556-007LF	10081578-001	10017475-02-006	N/A	YES	BLACK
10010556-008LF	10056226-004LF(FFC)	10017475-02-003	N/A	YES	BLUE
10010556-009LF	10083983-001(FFC)	10017475-02-008	N/A	YES	BLUE
10010556-010LF	10056226-005LF(FFC)	340391-202	N/A	YES	GREEN
10010556-011LF	10087561-001	10017475-02-007	N/A	YES	BLUE
10010556-012LF	10087561-002	10017475-02-007	N/A	YES	BLUE
10010556-013LF	10088568-001	10017475-02-006	N/A	YES	BLACK
10010556-014LF	10087561-004	10017475-02-004	N/A	YES	BLUE
10010556-015LF	10099689-001(FFC)	10017475-02-006	N/A	YES	BLACK
10010556-016LF	10056226-006LF(FFC)	340391-202	N/A	YES	GREEN
10010556-017LF	10056226-007LF(FFC)	340391-202	N/A	YES	GREEN
10010556-018LF	10107293-001(FFC)	10017475-02-004	N/A	YES	GREEN



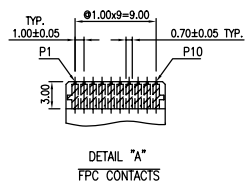
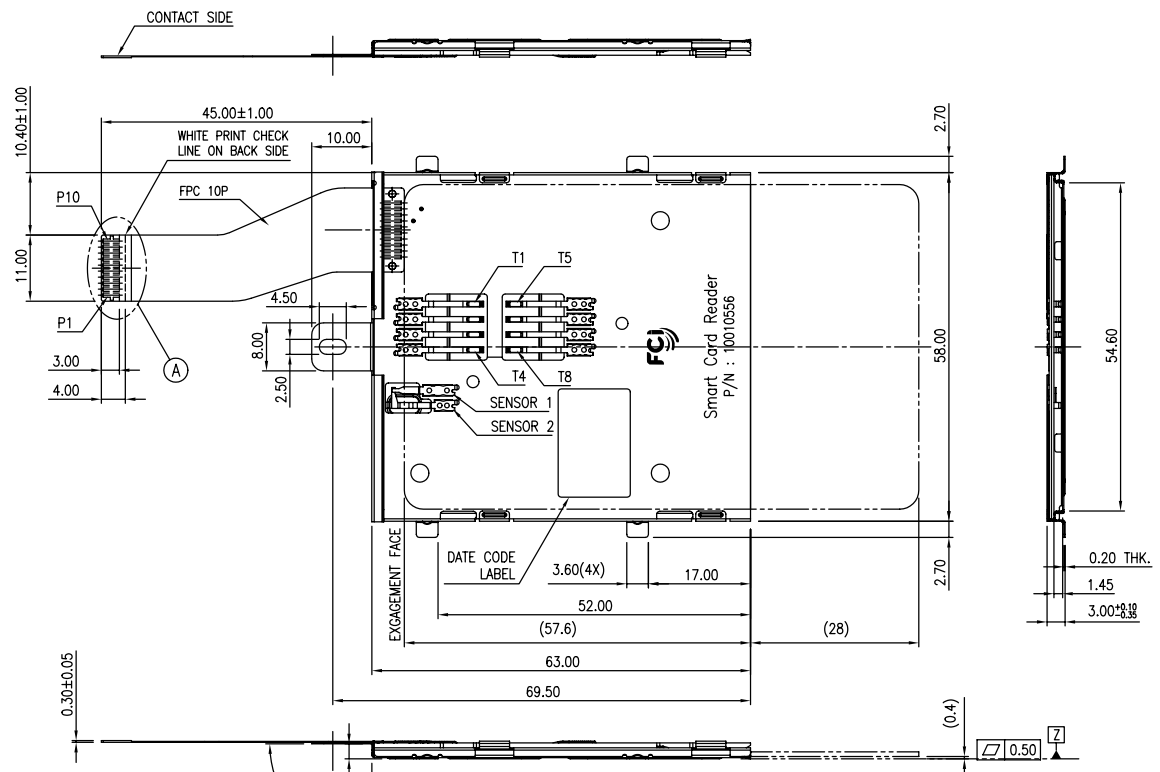
- NOTE :
- SMART CARD READER FOR LOWER PROFILE HEIGHT OF 3.0 mm.
 - TOTAL CIRCUIT RESISTANCE PER ONE LOOP SHALL NOT EXCEED 100 MILLIOHMS.
 - MATERIALS :
CONTACTS : COPPER ALLOY, GOLD OVER NICKEL ON CONTACT AREA.
TOP PCB : FR4.
COVER : STAINLESS STEEL.
 - ENVIRONMENT :
STORAGE TEMPERATURE : FROM -40°C TO 100°C.
OPERATION TEMPERATURE : FROM -40°C TO 85°C.

mat'l. code	tolerances unless otherwise specified	CUSTOMER COPY	FCI	www.fciconnect.com
itr ecn no dr date	linear	projection	title SMART CARD READER ASSEMBLY	
R N08-0136 SH 07/07/08	.X ± 0.5		product family 95	
S N08-0212 SH 10/06/08	.XX ± 0.50		code -	
T N09-0224 SH 7/15/09	.XXX ± 0.10		size dwg no 10010556	
U N09-0306 SH 10/13/09	0° ± 2°		sheet 1 of 20	
V N10-0058 SH 3/3/10	engr A.JUANG 6/7/02	scale NONE A3	Printed: 2010-12-20 10:25:26	
	chr A.JUANG 6/7/02			
	app JENN.TSAG 6/7/02			
sheet index	revision sheet			

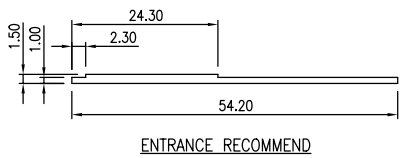
Tous droits strictement réservés. Reproduction ou communication, o des tiers interdite sous quelque forme que ce soit sans autorisation écrite du propriétaire. Propriété de © FCI ELECTRONICS. Droits de reproduction FCI ELECTRONICS INC.

All rights strictly reserved. Reproduction or issue to third parties, in any form whatever is not permitted without written authority from the proprietor. Property of © FCI ELECTRONICS. Copyright FCI ELECTRONICS INC.

PRODUCT NO.
10010556-002LF



SMART CARD	TERMINAL	FPC	FUNC.
C4	T4	P1	RFU
C3	T3	P2	Clock
C2	T2	P3	Reset
C1	T1	P4	Vcc
SENSOR 1	SENSOR 1	P5	SENSOR
SENSOR 2	SENSOR 2	P6	SENSOR
C5	T5	P7	Gnd
C6	T6	P8	Vpp
C7	T7	P9	I/O
C8	T8	P10	RFU



mat'l. code		tolerances unless otherwise specified		CUSTOMER COPY		FCI	
lir	ecn no	dr	date	linear	projection	title	
v				.XX ± .30	mm	SMART CARD READER ASSEMBLY	
				.XXX ± .10	mm	product family	code
				Ø ± .2	mm	SMART PLUS	
dr	A. JUNG	8/7/02			scale	size	dwg no
chr	A. JUNG	8/7/02			NONE	A3	10010556
appd	JENN TSHO	8/7/02					sheet
sheet index	revision sheet						2 of 18

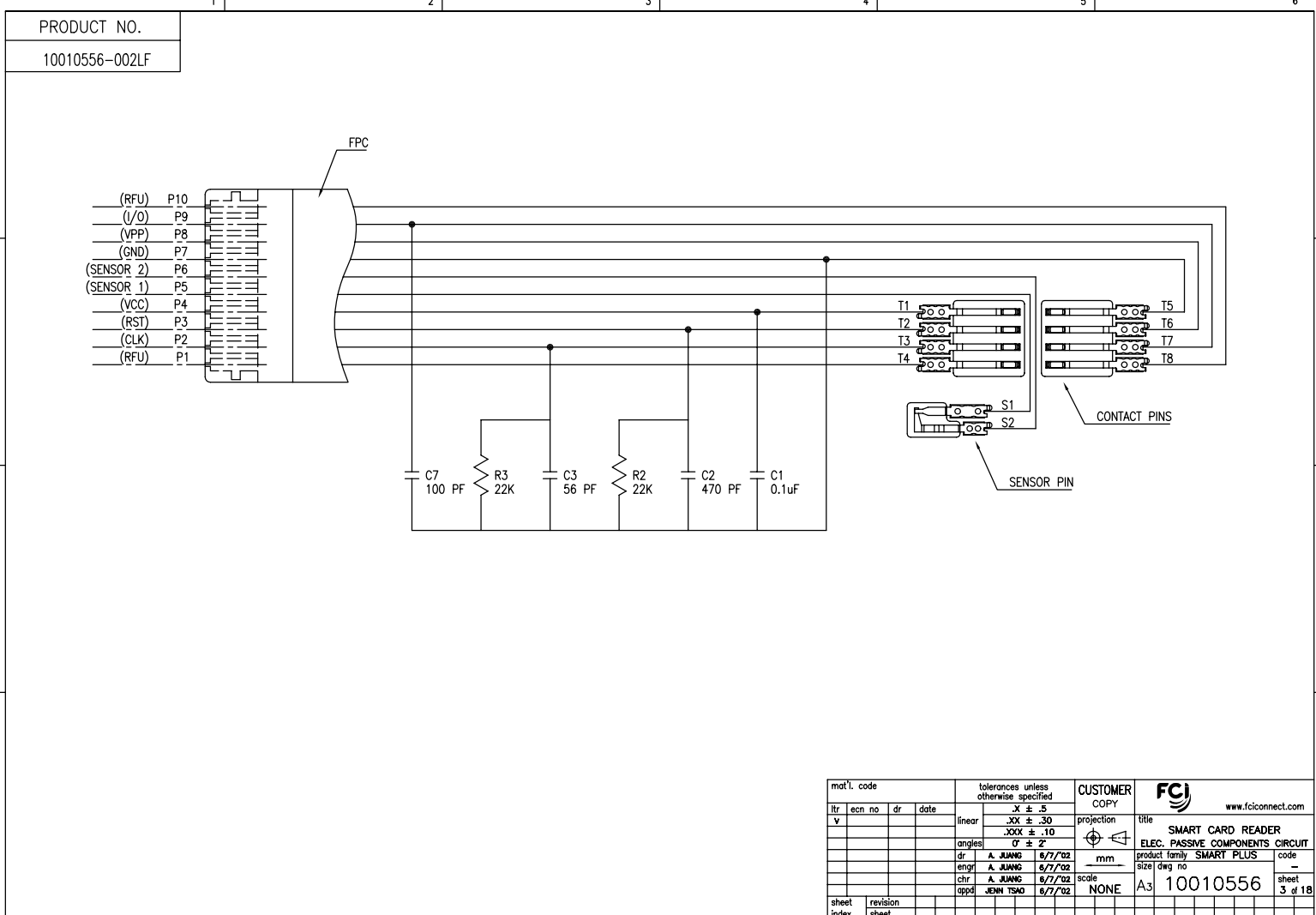
form no. 7530-001-103

PDM: Rev:V STATUS:Released Printed: 2008-12-20 22526

Tous droits strictement réservés. Reproduction ou communication à des tiers interdite sous quelque forme que ce soit sans autorisation écrite du propriétaire. Propriété de © FCI ELECTRONICS INC. Droits de reproduction FCI ELECTRONICS INC.



All rights strictly reserved. Reproduction or issue to third parties in any form whatever is not permitted without written authority from the proprietor. Property of © FCI ELECTRONICS INC. Copyright FCI ELECTRONICS INC.



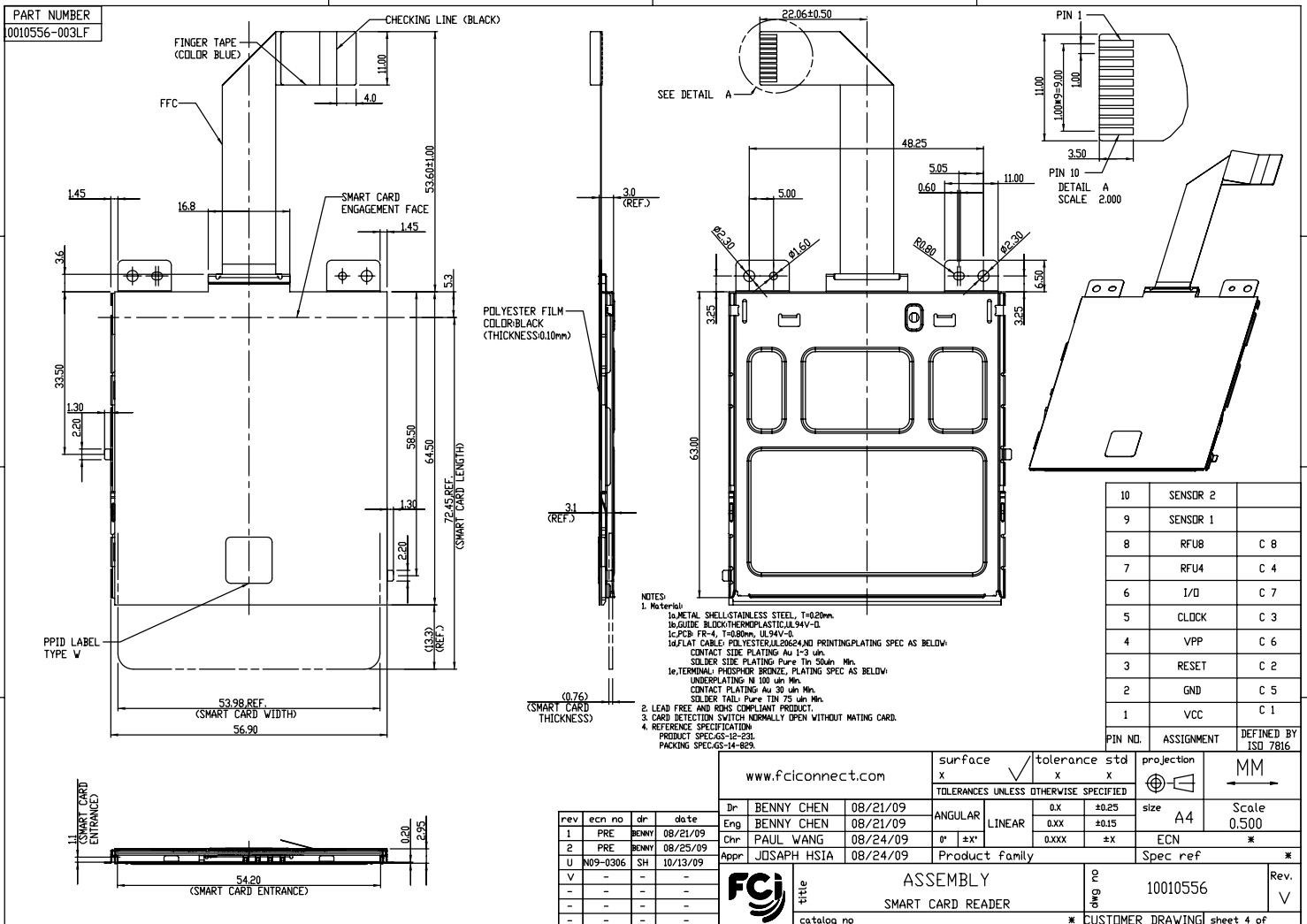
form no. 7530-001-103

mat'l. code		tolerances unless otherwise specified		CUSTOMER COPY		FCJ		www.fciconnect.com	
itr	ecn no	dr	date	linear	.XX ± .5	projection	title		
v					.XXX ± .10		SMART CARD READER		
				angles	0° ± 2'		ELEC. PASSIVE COMPONENTS CIRCUIT		
		dr	A. JIANG	8/7/02		mm	product family	SMART PLUS	code
		enrg	A. JIANG	8/7/02			size	dwg no	-
		chr	A. JIANG	8/7/02		scale	10010556		sheet
		appd	JEM TSD	8/7/02	NONE	A3	10010556		3 of 18
sheet	revision								
index	sheet								

PDM: Rev:V STATUS: Released Pri: 10010556 12, 2010 6



Copyright FCI



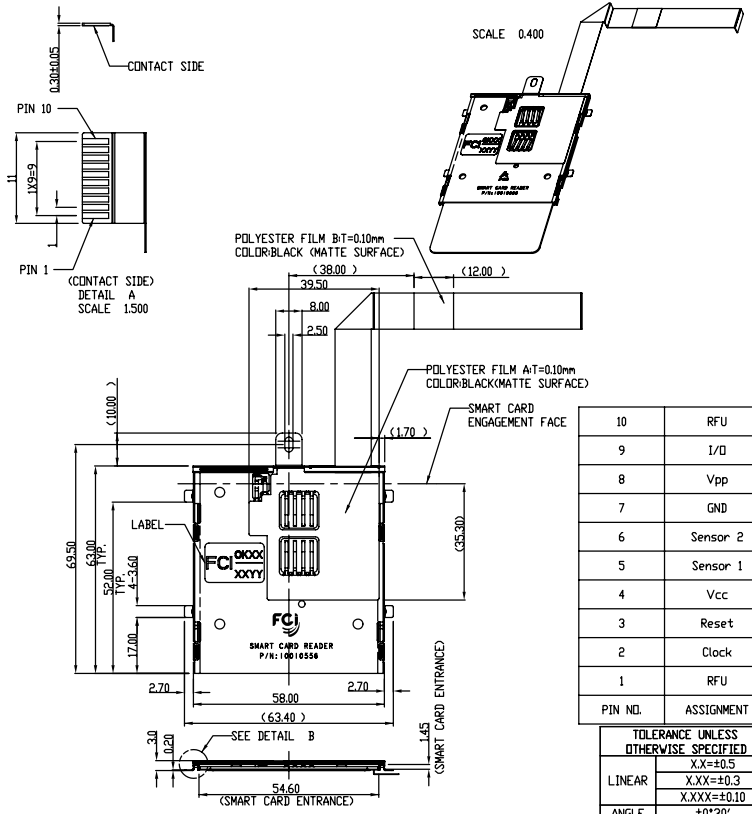
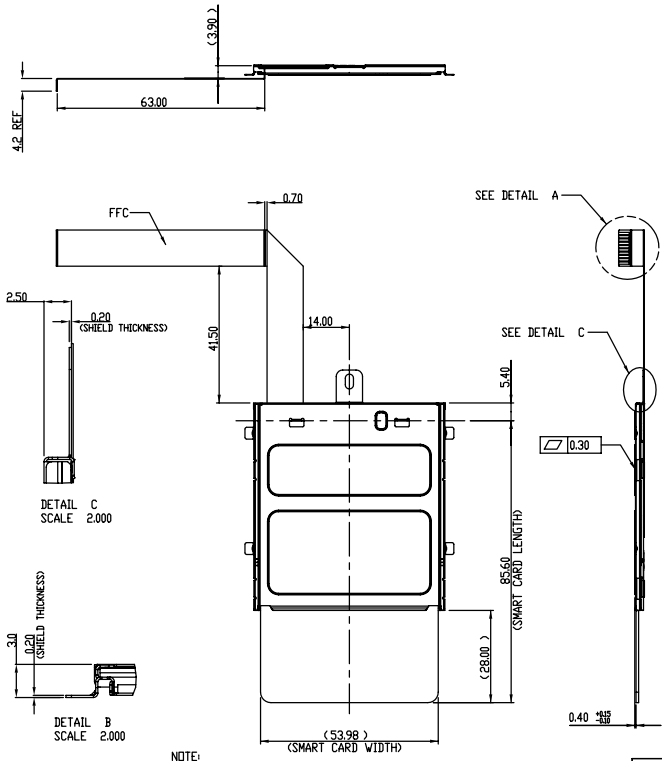
REV F - 0804-07

Tous droits strictement réservés. Reproduction ou communication à des tiers interdite sous quelque forme que ce soit sans autorisation écrite du propriétaire. Propriété de C.FCI. Droits de reproduction FCI.



All rights strictly reserved. Reproduction or issue to third parties in any form whatever is not permitted without written authority from the proprietor. Property of FCI. Copyright FCI.

PRODUCT NO
10010556-004LF



PIN NO.	ASSIGNMENT
10	RFU
9	I/O
8	Vpp
7	GND
6	Sensor 2
5	Sensor 1
4	Vcc
3	Reset
2	Clock
1	RFU

TOLERANCE UNLESS OTHERWISE SPECIFIED	
LINEAR	XX=±0.5 X.XX=±0.3 X.XXX=±0.10
ANGLE	±0°30'

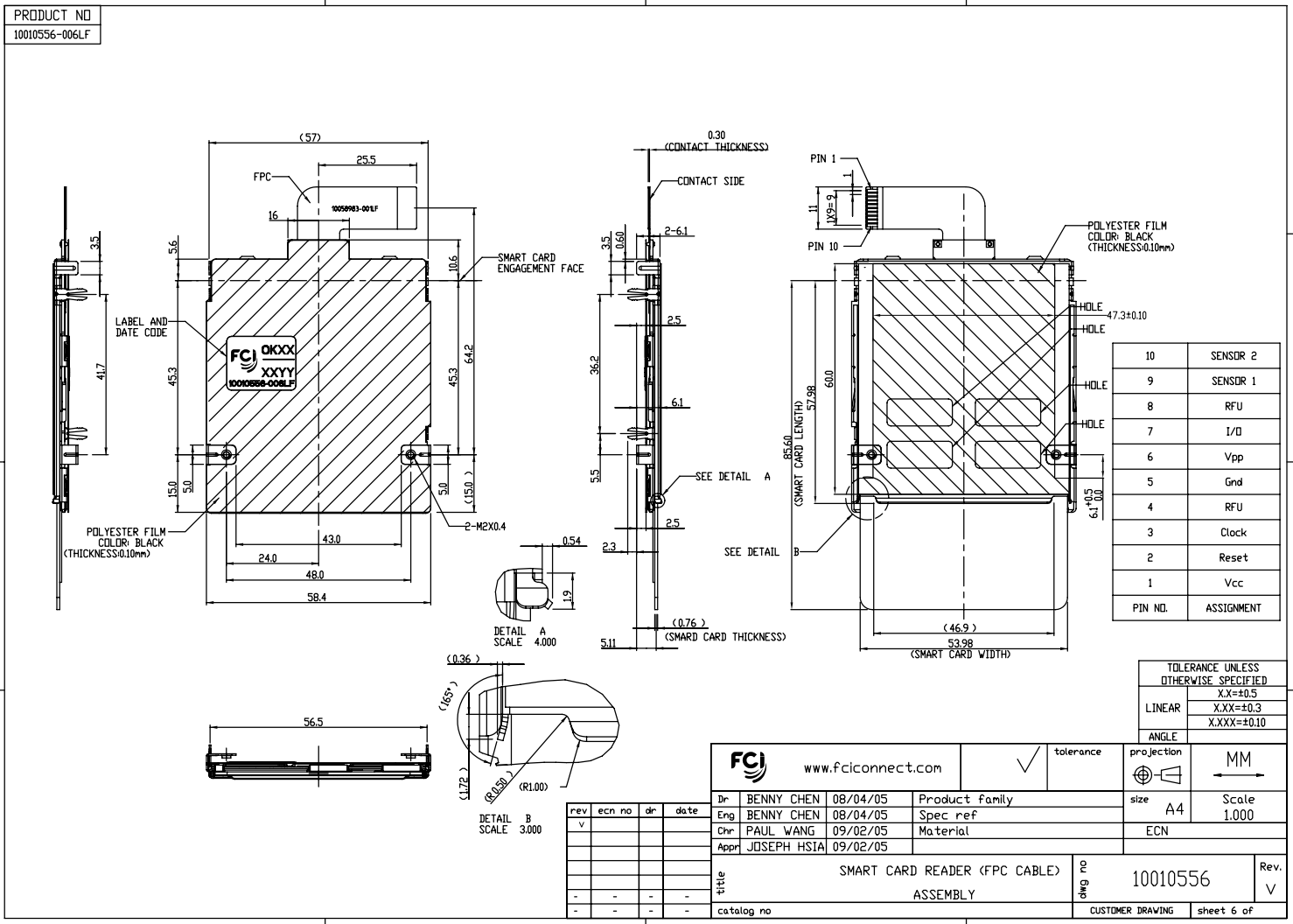
- NOTE:
1. Material:
METAL SHELL: STAINLESS STEEL, T=0.20mm
PCB: FR-4, T=0.80mm
TERMINAL: PHOSPHOR BRONZE.
PLATING SPEC AS BELOW:
ALL OVER NICKEL UNDERPLATING
GOLD PLATING ON CONTACT SURFACE.
MATT. TIN PLATING ON SOLDER TAIL.
FLEXIBLE FLAT CABLE: TOTAL LENGTH=1244±2mm
PLATING SPEC AS BELOW:
CONTACT SURFACE: TIN PLATING.
SOLDER TAIL: TIN PLATING.
 2. CARD DETECTION SWITCH NORMALLY OPEN WITHOUT MATING CARD
 3. REFERENCE SPECIFICATION:
PRODUCT SPEC. GS 12-231
PACKING SPEC. GS 14-829

Mark with 10010556-004LF REV. in area indicated by X...		Material		Spec ref	
		Mat code		tolerance	
		Heat treat		projection	
		Plating/Finish		size	
rev	ecn no	dr	date	eng	date
V				BENNY CHEN	07/06/05
				BENNY CHEN	07/06/05
				Paul Wang	08/11/05
				Joseph Hsia	08/11/05
title			ASSEMBLY		
Pro/E file			catalog no		
Rev. V			10010556		
CUSTOMER DRAWING			sheet 5 of 5		

Tous droits strictement réservés. Reproduction ou communication à des tiers interdite sous quelque forme que ce soit sans l'autorisation écrite préalable de FCI. Droits de reproduction FCI.



All rights strictly reserved. Reproduction or issue to third parties in any form whatever is not permitted without written permission of FCI. Copyright FCI.



PIN NO.	ASSIGNMENT
10	SENSOR 2
9	SENSOR 1
8	RFU
7	I/O
6	Vpp
5	Gnd
4	RFU
3	Clock
2	Reset
1	Vcc

TOLERANCE UNLESS OTHERWISE SPECIFIED	
LINEAR	XX=±0.5 X.XX=±0.3 X.XXX=±0.10
ANGLE	

FCI www.fciconnect.com		tolerance	projection	MM
Dr	BENNY CHEN	08/04/05	Product family	
Eng	BENNY CHEN	08/04/05	Spec ref	
Chr	PAUL WANG	09/02/05	Material	
Appr	JOSEPH HSIA	09/02/05		
title			Rev. no	Rev.
SMART CARD READER (FPC CABLE) ASSEMBLY			10010556	√
catalog no		CUSTOMER DRAWING	sheet 6 of	

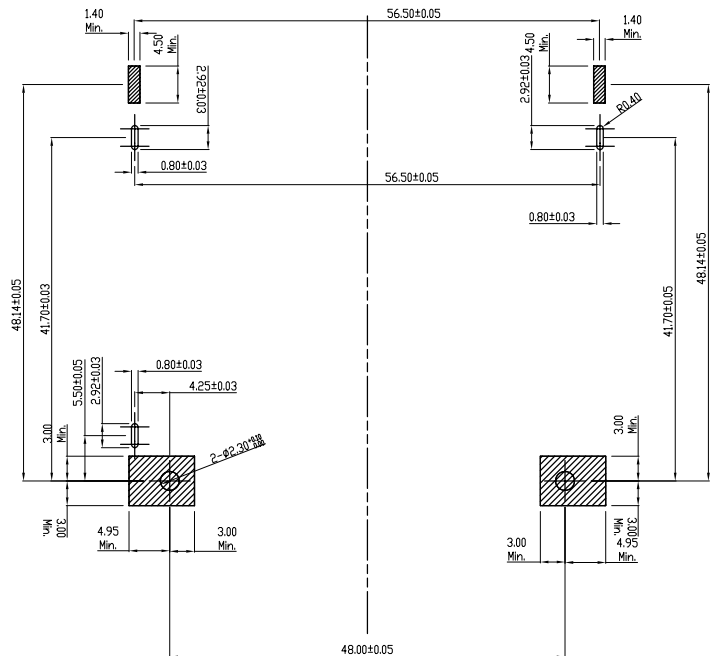
rev	ecn no	dr	date
v			

Tous droits strictement reserves. Reproduction ou communication a des tiers interdite sous quelque forme que ce soit sans autorisation écrite du propriétaire. Propriete de c.FCI. Droits de reproduction FCI.

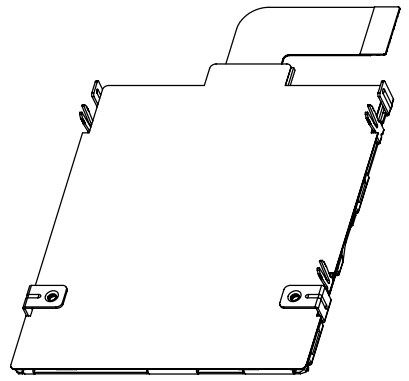


All rights strictly reserved. Reproduction or issue to third parties in any form whatever is not permitted without written authority from the proprietor. Property of FCI. Copyright FCI.

PRODUCT NO
10010556-006LF



RECOMMENDED PCB LAYOUT
(PCB THICKNESS: 1.2 mm)
(MOUNTING SIDE)



- NOTE:
- MATERIAL:
METAL SHELL: STAINLESS STEEL, T=0.40mm
PCB: FR-4, T=0.80mm
TERMINAL: PHOSPHOR BRONZE.
PLATING SPEC AS BELOW:
ALL OVER NICKEL UNDERPLATING
GOLD PLATING ON CONTACT SURFACE.
MATTE TIN PLATING ON SOLDER TAIL.
FLEX CIRCUIT CABLE(FPC):
PLATING SPEC AS BELOW:
CONTACT SURFACE: GOLD FLASH PLATING.
SOLDER TAIL: PURE TIN PLATING.
 - CARD DETECTION SWITCH NORMALLY OPEN WITHOUT MATING CARD
 - REFERENCE SPECIFICATION:
PRODUCT SPEC. GS-12-231
PACKING SPEC. GS-14-829

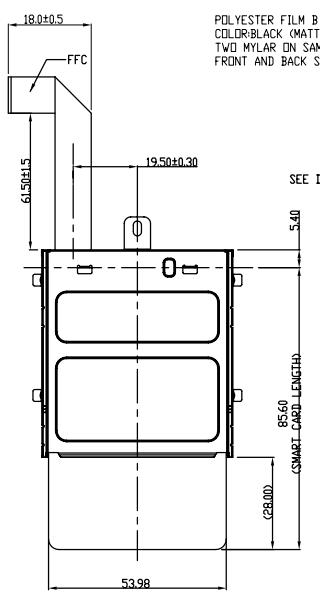
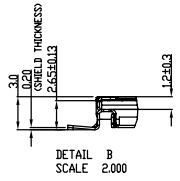
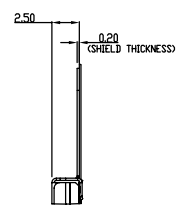
FCI		www.fciconnect.com		tolerance	projection	MM
Dr	BENNY CHEN	08/04/05	Product family			
Eng	BENNY CHEN	08/04/05	Spec ref			
Chr	PAUL WANG	09/02/05	Material			
Appr	JOSEPH HSIA	09/02/05	ECN			
title			SMART CARD READER (FPC CABLE)	size	A4	Scale
catalog no			ASSEMBLY	10010556	1.000	Rev.
				sheet	7 of	V

Tous droits strictement réservés. Reproduction ou communication à des tiers interdite sous quelque forme que ce soit sans autorisation écrite du propriétaire. Propriété de C.FCI. Droits de reproduction FCI.



All rights strictly reserved. Reproduction or issue to third parties in any form whatever is not permitted without written authority from the proprietor. Property of FCI. Copyright FCI.

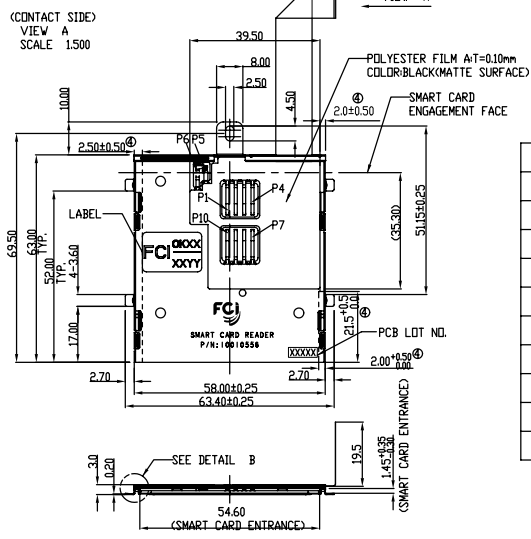
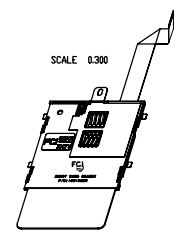
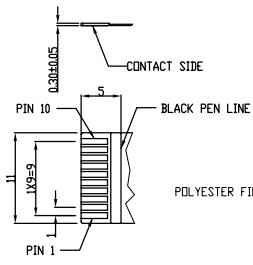
PRODUCT NO
10010556-005LF



POLYESTER FILM B & C: T=0.10mm
COLOR: BLACK (MATTE SURFACE)
TWO MYLAR ON SAME POSITION
FRONT AND BACK SURFACE OF FFC

SUPPORTING TAPE

SEE DETAIL C



10	RFU
9	I/O
8	Vpp
7	GND
6	Sensor 2
5	Sensor 1
4	Vcc
3	Reset
2	Clock
1	RFU
PIN NO.	ASSIGNMENT

TOLERANCE UNLESS OTHERWISE SPECIFIED	
LINEAR	X.XX=±0.25 X.XXX=±0.13 X.XXX=±0.050
ANGLE	±0°30'

- NOTE:
- Material:
METAL SHELL: STAINLESS STEEL, T=0.20mm
PCB: FR-4, T=0.80mm
TERMINAL: PHOSPHOR BRONZE.
PLATING SPEC AS BELOW:
ALL OVER NICKEL UNDERPLATING
GOLD PLATING ON CONTACT SURFACE.
MATTE TIN PLATING ON SOLDER TAIL.
FLEXIBLE FLAT CABLE: TOTAL LENGTH=103.5±2mm
PLATING SPEC AS BELOW:
CONTACT SURFACE: TIN PLATING.
SOLDER TAIL: TIN PLATING.
 - CARD DETECTION SWITCH NORMALLY OPEN WITHOUT MATING CARD
 - REFERENCE SPECIFICATION:
PRODUCT SPEC. GS 12-231
PACKING SPEC. GS 14-829
 - THE AREA IS PROHIBITED TO PASTE THE MYLAR AND LABEL.

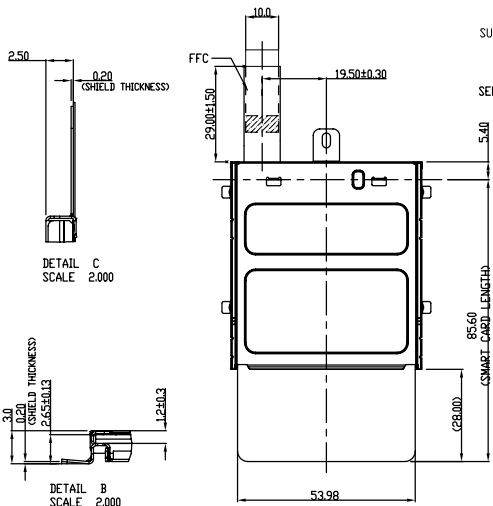
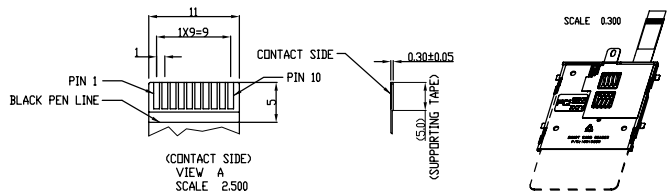
Mark with 10010556-004LF REV. in area indicated by X....		Material		Spec ref	
rev ecn no dr date		Mat code		tolerance	
V		DANIEL TAD 07/05/07		projection	
		Eng DANIEL TAD 07/05/07		MM	
		Chr DANIEL TAD 07/05/07		size A4	
		Appr JOSEPH HSIA 07/05/07		Scale 0.500	
		Product family		REL Level	
		Model Name 10010556-005LF		ECN	
		Model Revision		10010556	
		title ASSEMBLY		Rev. V	
		SMART CARD READER		CUSTOMER DRAWING sheet 8 of	
		Pro/E file catalog no			

Tous droits strictement réservés. Reproduction ou communication à des tiers interdite sous quelque forme que ce soit sans autorisation écrite du propriétaire. Propriété de C.FCI. Droits de reproduction FCI.



All rights strictly reserved. Reproduction or issue to third parties in any form whatever is not permitted without written authority from the proprietor. Property of FCI. Copyright FCI.

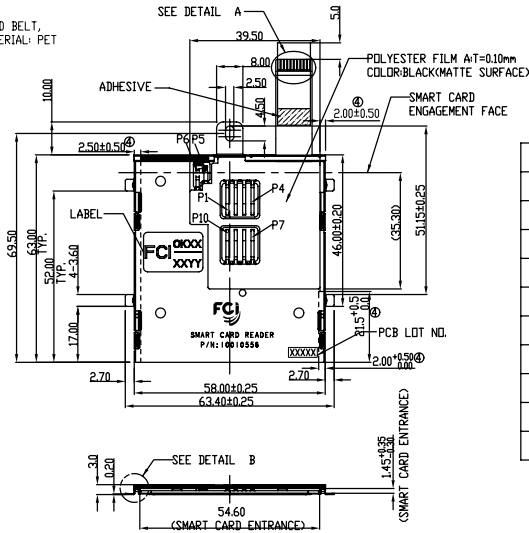
PRODUCT NO
10010556-008LF



DETAIL C
SCALE 2.000

DETAIL B
SCALE 2.000

SUPPORTING TAPE
HAND BELT, MATERIAL: PET
SEE DETAIL C



10	RFU
9	I/O
8	Vpp
7	GND
6	Sensor 2
5	Sensor 1
4	Vcc
3	Reset
2	Clock
1	RFU
PIN NO.	ASSIGNMENT

TOLERANCE UNLESS OTHERWISE SPECIFIED	
LINEAR	XX=±0.5 XXX=±0.3 XXX=±0.10
ANGLE	±0°30'

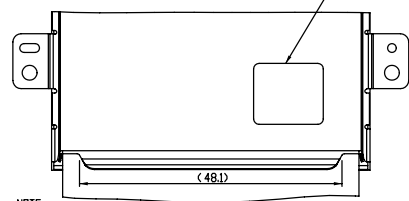
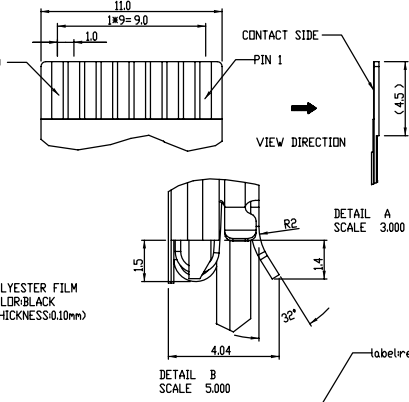
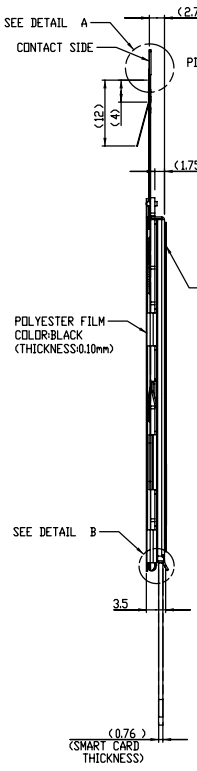
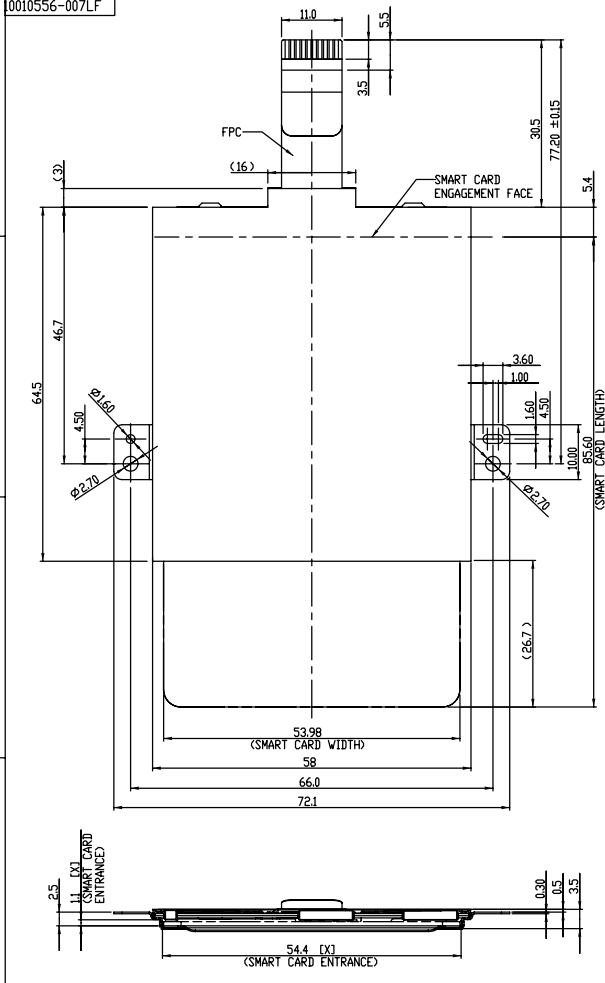
- NOTE:
1. Material:
METAL SHELL: STAINLESS STEEL, T=0.20mm
PCB: FR-4, T=0.80mm
TERMINAL: PHOSPHOR BRONZE.
PLATING SPEC AS BELOW:
ALL OVER NICKEL UNDERPLATING
GOLD PLATING ON CONTACT SURFACE.
MATTE TIN PLATING ON SOLDER TAIL.
FLEXIBLE FLAT CABLE: TOTAL LENGTH=33.5±1mm
PLATING SPEC AS BELOW:
CONTACT SURFACE: TIN PLATING.
SOLDER TAIL: TIN PLATING.
2. CARD DETECTION SWITCH NORMALLY OPEN WITHOUT MATING CARD
3. REFERENCE SPECIFICATION:
PRODUCT SPEC. GS 12-231
PACKING SPEC. GS 14-829
④ THE AREA IS PROHIBITED TO PASTE THE MYLAR AND LABEL.

Mark with 10010556-004LF REV. in area indicated by X....		Material		Spec ref	
		Mat code		tolerance	
		Heat treat		projection	
		Plating/Finish		size	
rev	ecn no	dr	date	size	Scale
v				A4	0.500
		Br DANIEL TAD 07/05/07		Product family	
		Eng DANIEL TAD 07/05/07		Model Name 10010556-008LF	
		Chr DANIEL TAD 07/05/07		Model Revision	
		Appr JOSEPH HSIA 07/05/07		REL Level	
		FCI		title	
		ASSEMBLY		10010556	
		SMART CARD READER		Rev. V	
		Pro/E file catalog no		CUSTOMER DRAWING sheet 9 of	



Copyright FCI

PART NUMBER
10010556-007LF



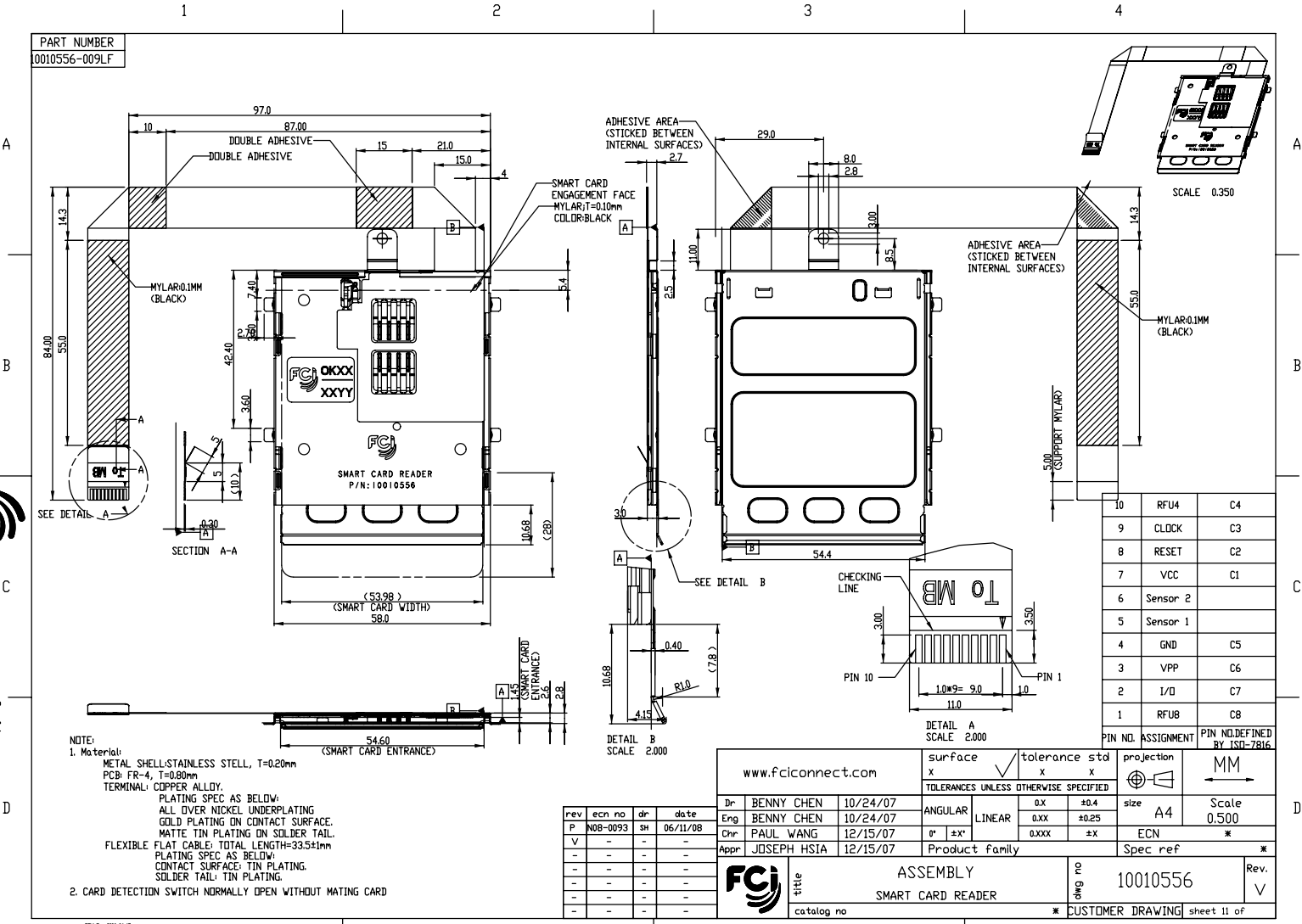
NOTE:
1. Material:
METAL SHELL: STAINLESS STEEL, T=0.30mm
GUIDE BLOCK: THERMOPLASTIC, UL94V-0.
PCB: FR-4, T=0.80mm, UL94V-0.
PCB: POLYIMIDE, T=0.30mm, UL94V-0.
FPC: POLYIMIDE, T=0.30mm, UL94V-0.
PLATING SPEC AS BELOW:
UNDERPLATING: Ni 50 uin Min.
CONTACT SIDE PLATING: Au 3 uin Min.
SOLDER SIDE PLATING: Pure Tin 100 uin Min.
TERMINAL: COPPER ALLOY.
PLATING SPEC AS BELOW:
UNDERPLATING: Ni 50 uin Min.
CONTACT PLATING: Au 30 uin Min.
SOLDER TAIL: Pure TIN 75 uin Min.
2. CARD DETECTION SWITCH NORMALLY OPEN WITHOUT MATING CARD
3. REFERENCE SPECIFICATION
PRODUCT SPEC: GS-12-231
PACKING SPEC: GS-14-829.

PIN NO.	ASSIGNMENT
10	SENSOR 2
9	SENSOR 1
8	RFU
7	I/O
6	VPP
5	GND
4	RFU
3	CLOCK
2	RESET
1	VCC

rev	ecn no	dr	date
M	N08-0024	BENNY	03/05/08
N	N08-0045	BENNY	05/05/08
V			

www.fciconnect.com		surface	tolerance std	projection	MM
		x	x	x	
		TOLERANCES UNLESS OTHERWISE SPECIFIED			
Dr	BENNY CHEN	07/23/07	ANGULAR	0.X	±0.25
Eng	BENNY CHEN	07/23/07	LINEAR	0.XX	±0.15
Chr	PAUL WANG	09/10/07	0° ±3°	0.XXX	±
Appr	JOSEPH HSIA	09/11/07	Product family	ECN	*
FCI		ASSEMBLY		Part no	10010556
		SMART CARD READER		Rev.	V
catalog no		* CUSTOMER DRAWING		sheet 10 of	

PART NUMBER
10010556-009LF



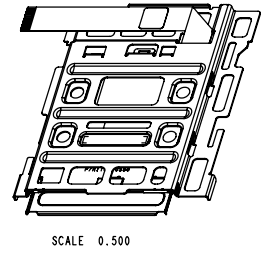
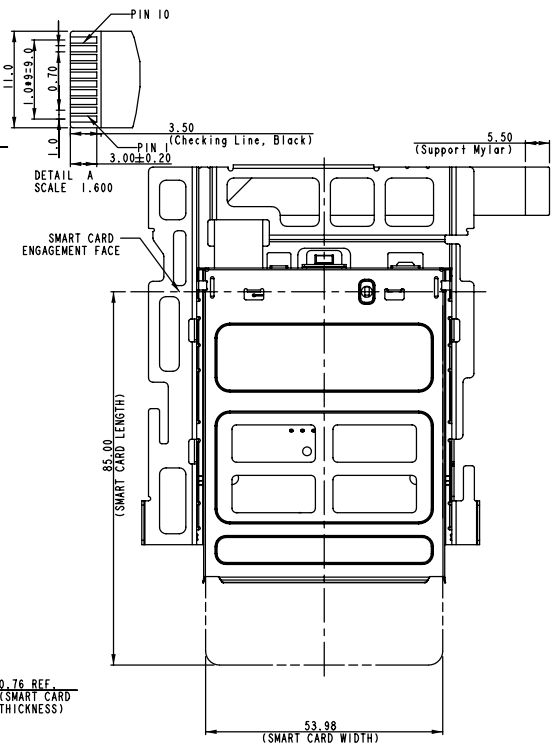
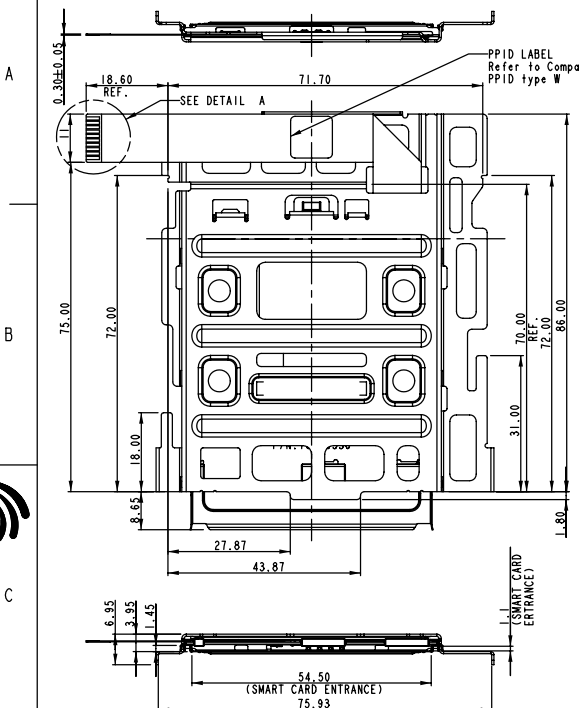
10	RFU4	C4
9	CLOCK	C3
8	RESET	C2
7	VCC	C1
6	Sensor 2	
5	Sensor 1	
4	GND	C5
3	VPP	C6
2	I/O	C7
1	RFU8	C8

NOTE:
1. Material:
METAL SHELL: STAINLESS STEEL, T=0.20mm
PCB: FR-4, T=0.60mm
TERMINAL: COPPER ALLOY.
PLATING SPEC AS BELOW:
ALL OVER NICKEL UNDERPLATING
GOLD PLATING ON CONTACT SURFACE.
MATTE TIN PLATING ON SOLDER TAIL.
FLEXIBLE FLAT CABLE: TOTAL LENGTH=33.5±1mm
PLATING SPEC AS BELOW:
CONTACT SURFACE: TIN PLATING.
SOLDER TAIL: TIN PLATING.
2. CARD DETECTION SWITCH NORMALLY OPEN WITHOUT MATING CARD

rev	ecn no	dr	date
P	N08-0093	SH	06/11/08
V	-	-	-
-	-	-	-
-	-	-	-
-	-	-	-
-	-	-	-

www.fciconnect.com		surface	tolerance	std	projection	MM
Dr	BENNY CHEN	10/24/07	x	x		Scale 0.500
Eng	BENNY CHEN	10/24/07	ANGULAR	LINEAR		
Chr	PAUL WANG	12/15/07	0°	±x*	size A4	ECN *
Appr	JOSEPH HSIA	12/15/07	Product family	Spec ref	* CUSTOMER DRAWING sheet 11 of	
		title ASSEMBLY SMART CARD READER		eng no 10010556	Rev. V	

PART NUMBER
10010556-010LF



PIN NO.	ASSIGNMENT	PIN NO. DEFINED BY ISO-7816
10	VCC	C1
9	Reset	C2
8	Clock	C3
7	RFU4	C4
6	Gnd	C5
5	VPP	C6
4	I/O	C7
3	RFU8	C8
2	SENSOR 2	
1	SENSOR 1	

NOTE:
1. Material:
METAL SHELL: STAINLESS STEEL
BRACKET: STEEL
GUIDE BLOCK: THERMOPLASTIC, UL94V-0.
PCB: FR-4, T=0.80mm, UL94V-0.
FFC: POLYESTER, UL20624.
PLATING SPEC AS BELOW:
CONTACT SIDE PLATING: GOLD.
SOLDER SIDE PLATING: Pure Tin.
TERMINAL: COPPER ALLOY.
PLATING SPEC AS BELOW:
UNDERPLATING: NICKEL.
CONTACT PLATING: GOLD.
SOLDER TAIL: Pure TIN.
2. CARD DETECTION SWITCH NORMALLY OPEN WITHOUT MATING CARD
3. REFERENCE SPECIFICATION:
PRODUCT SPEC.: GS-12-231.
PACKING SPEC.: GS-14-829.

rev	ecn no	dr	date
P	N08-0093	SH	06/11/08
R	N08-0136	SH	07/01/08
S	N08-0212	SH	10/06/08
V	-	-	-
-	-	-	-
-	-	-	-

www.fciconnect.com		surface	tolerance std	projection	MM
Dr	BENNY CHEN	02/05/08	X	X	
Eng	BENNY CHEN	02/05/08	TOLERANCES UNLESS OTHERWISE SPECIFIED		
Chr	PAUL WANG	02/13/08	0.X	±0.3	size A4
Appr	JOSEPH HSIA	02/15/08	0.XX	±.20	Scale 1.000
			0° ±X°	±X	ECN *
			0.XXX	±X	Spec ref *
FCj		ASSEMBLY		Qty no	10010556
TITLE		SMART CARD READER		Rev.	V
catalog no		* CUSTOMER DRAWING		sheet 12 of 12	

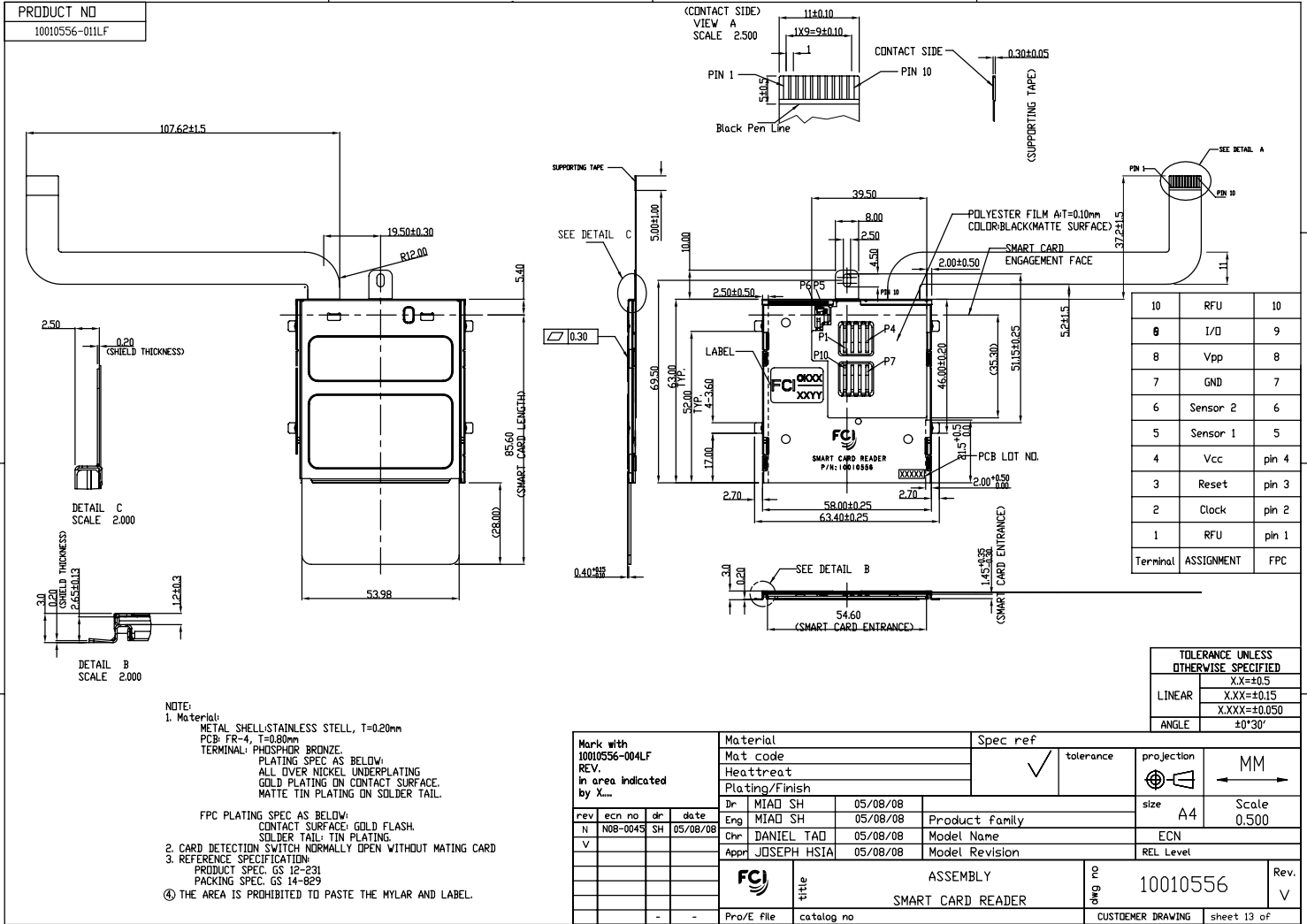


Copyright FCj.

Tous droits strictement réservés. Reproduction ou communication à des tiers interdite sous quelque forme que ce soit sans autorisation écrite du propriétaire. Propriété de C.FCI. Droits de reproduction FCI.



All rights strictly reserved. Reproduction or issue to third parties in any form whatever is not permitted without written authority from the proprietor. Property of FCI. Copyright FCI.

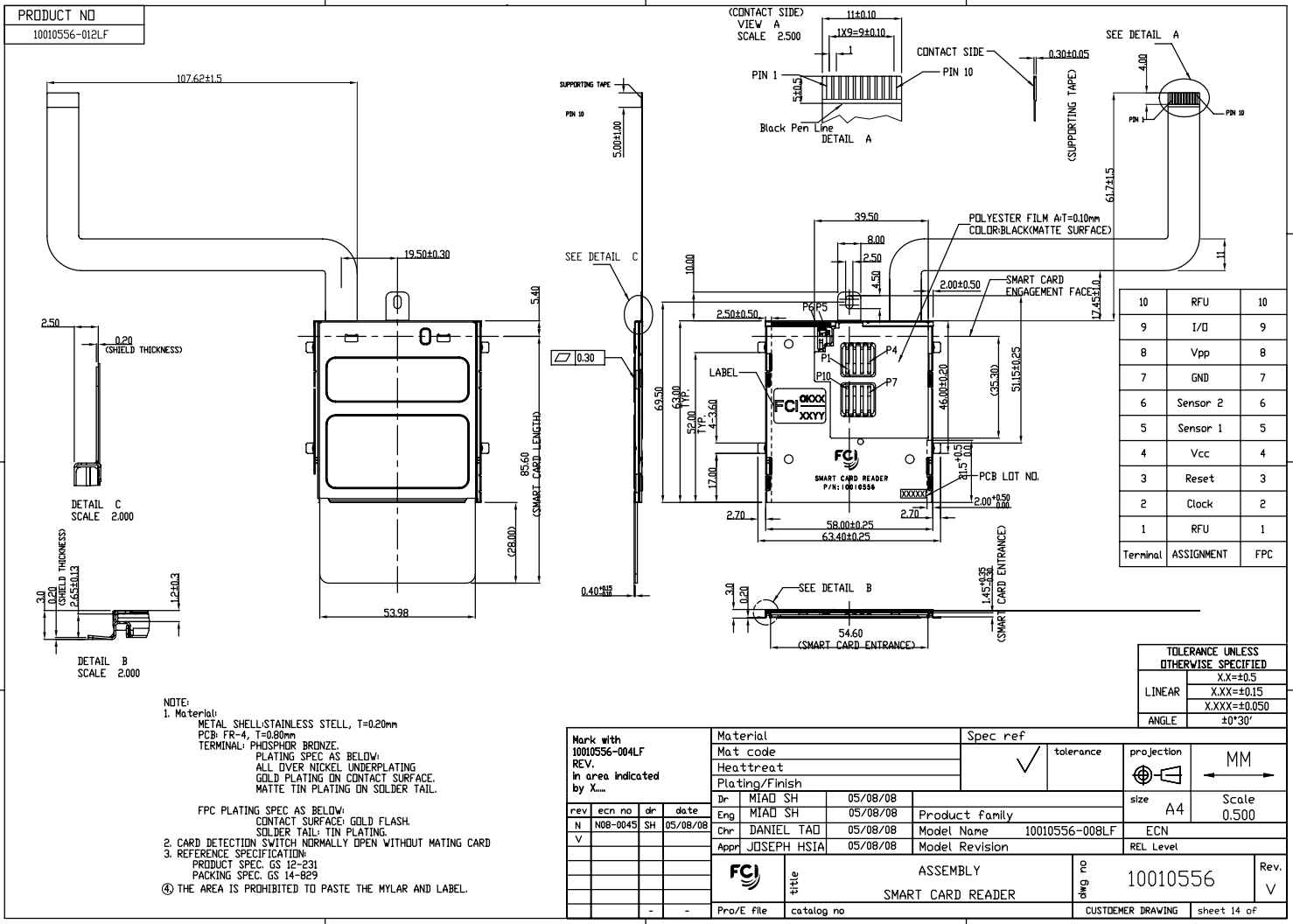


NOTE:
 1. Material:
 METAL SHELL: STAINLESS STEEL, T=0.20mm
 PCB: FR-4, T=0.80mm
 TERMINAL: PHOSPHOR BRONZE.
 PLATING SPEC AS BELOW:
 ALL OVER NICKEL UNDERPLATING
 GOLD PLATING ON CONTACT SURFACE.
 MATTE TIN PLATING ON SOLDER TAIL.
 FPC PLATING SPEC AS BELOW:
 CONTACT SURFACE: GOLD FLASH.
 SOLDER TAIL: TIN PLATING.
 2. CARD DETECTION SWITCH NORMALLY OPEN WITHOUT MATING CARD
 3. REFERENCE SPECIFICATION:
 PRODUCT SPEC. GS 12-231
 PACKING SPEC. GS 14-829
 ④ THE AREA IS PROHIBITED TO PASTE THE MYLAR AND LABEL.

Tous droits strictement réservés. Reproduction ou communication à des tiers interdite sous quelque forme que ce soit sans autorisation écrite du propriétaire. Propriété de FCI. Droits de reproduction FCI.



All rights strictly reserved. Reproduction or issue to third parties in any form whatever is not permitted without written authority from the proprietor. Property of FCI. Copyright FCI.



1

2

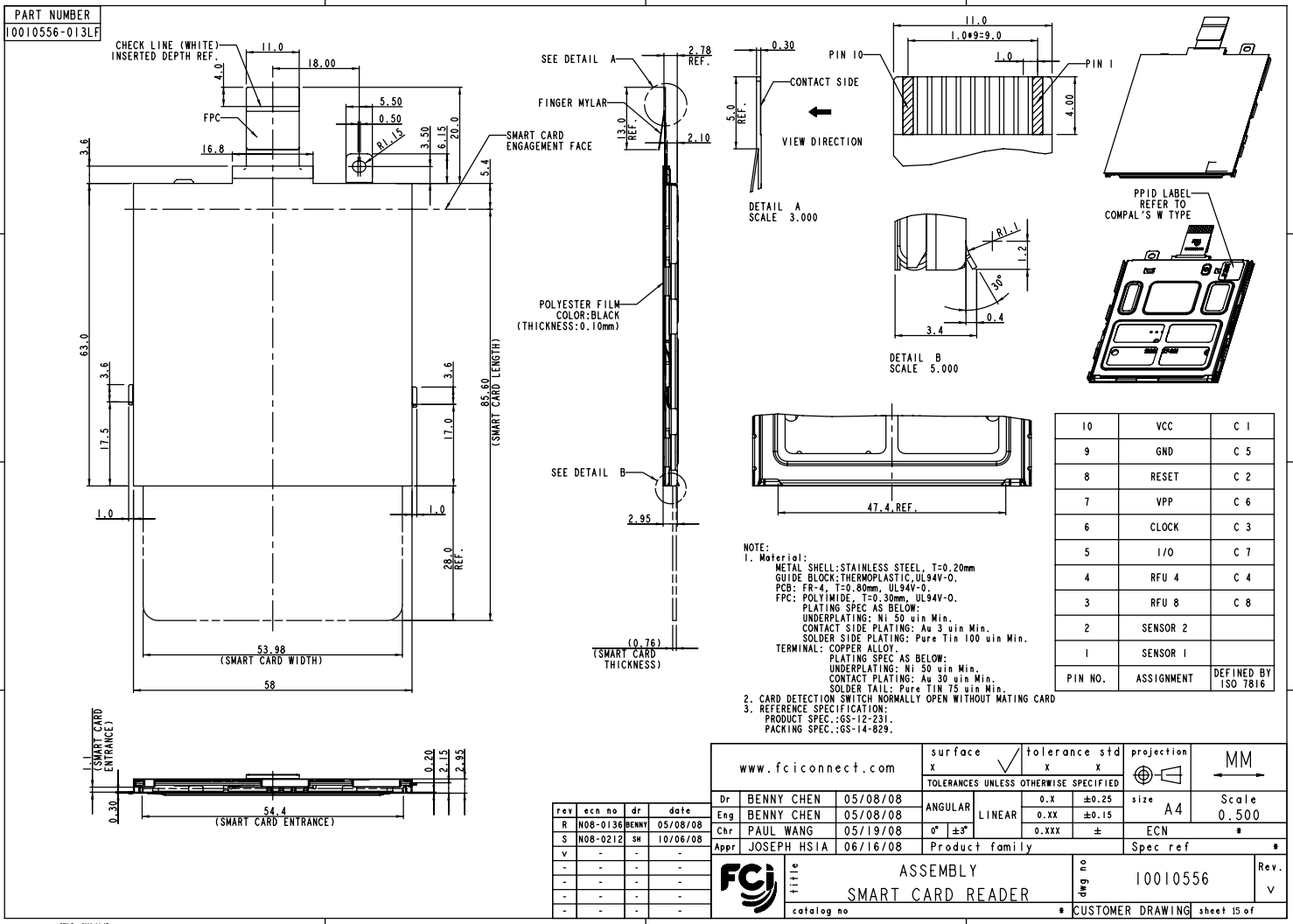
3 PDM: Rev:V

STATUS: Released

4 Printed: Mar 12, 2010



Copyright FCI.



rev	ecn no	dr	date
R	N08-0136	BENNY	05/08/08
S	N08-0212	SH	10/06/08
V			

www.fciconnect.com		surface	tolerance	std	projection	MM
Dr	BENNY CHEN	05/08/08	ANGULAR	LINEAR	0.X ±0.25	size A4 Scale 0.500
Eng	BENNY CHEN	05/08/08	0.XX ±0.15	0.XXX ±	ECN	*
Chr	PAUL WANG	05/19/08	0° ±3°		Spec ref	*
Appr	JOSEPH HSIA	06/16/08	Product family			
FCI		ASSEMBLY		10010556		Rev. V
catalog no		CUSTOMER DRAWING		sheet 15 of		

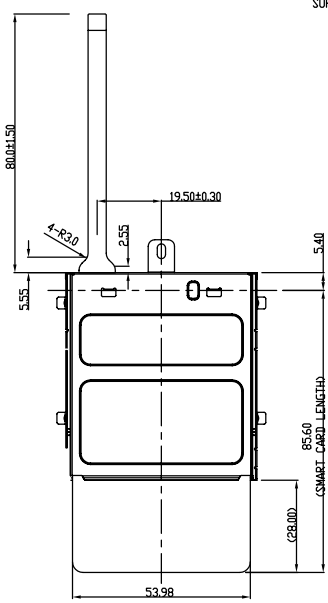
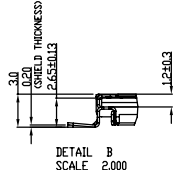
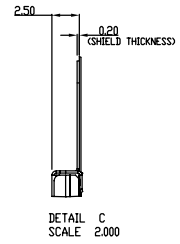
3 PDM: Rev:V STATUS:Released 4 Printed: Mar 12, 2010

Tous droits strictement réservés. Reproduction ou communication à des tiers interdite sous quelque forme que ce soit sans autorisation écrite du propriétaire. Propriété de C.FCI. Droits de reproduction FCI.



All rights strictly reserved. Reproduction or issue to third parties in any form whatever is not permitted without written authority from the proprietor. Property of FCI. Copyright FCI.

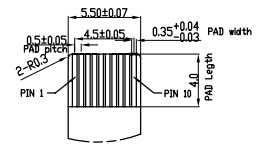
PRODUCT NO	FPC
10010556-014LF	10086571-004



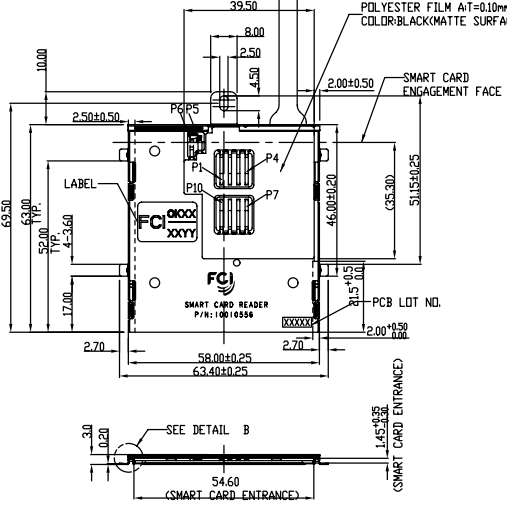
0.30±0.05 CONTACT SIDE
SUPPORTING TAPE

SEE DETAIL C

SEE DETAIL A



DETAIL A



P10	RFU	10
P8	Vpp	9
P9	I/O	8
P7	GND	7
P5	Sensor 1	6
P4	Vcc	5
P3	Reset	4
P6	Sensor 2	3
P2	Clock	2
P1	RFU	1
Terminal	ASSIGNMENT	FPC

- NOTE:
- Material:
METAL SHELL: STAINLESS STEEL, T=0.20mm
PCB: FR-4, T=0.80mm
TERMINAL: PHOSPHOR BRONZE.
PLATING SPEC AS BELOW:
ALL OVER NICKEL UNDERPLATING
GOLD PLATING ON CONTACT SURFACE.
MATTE TIN PLATING ON SOLDER TAIL.

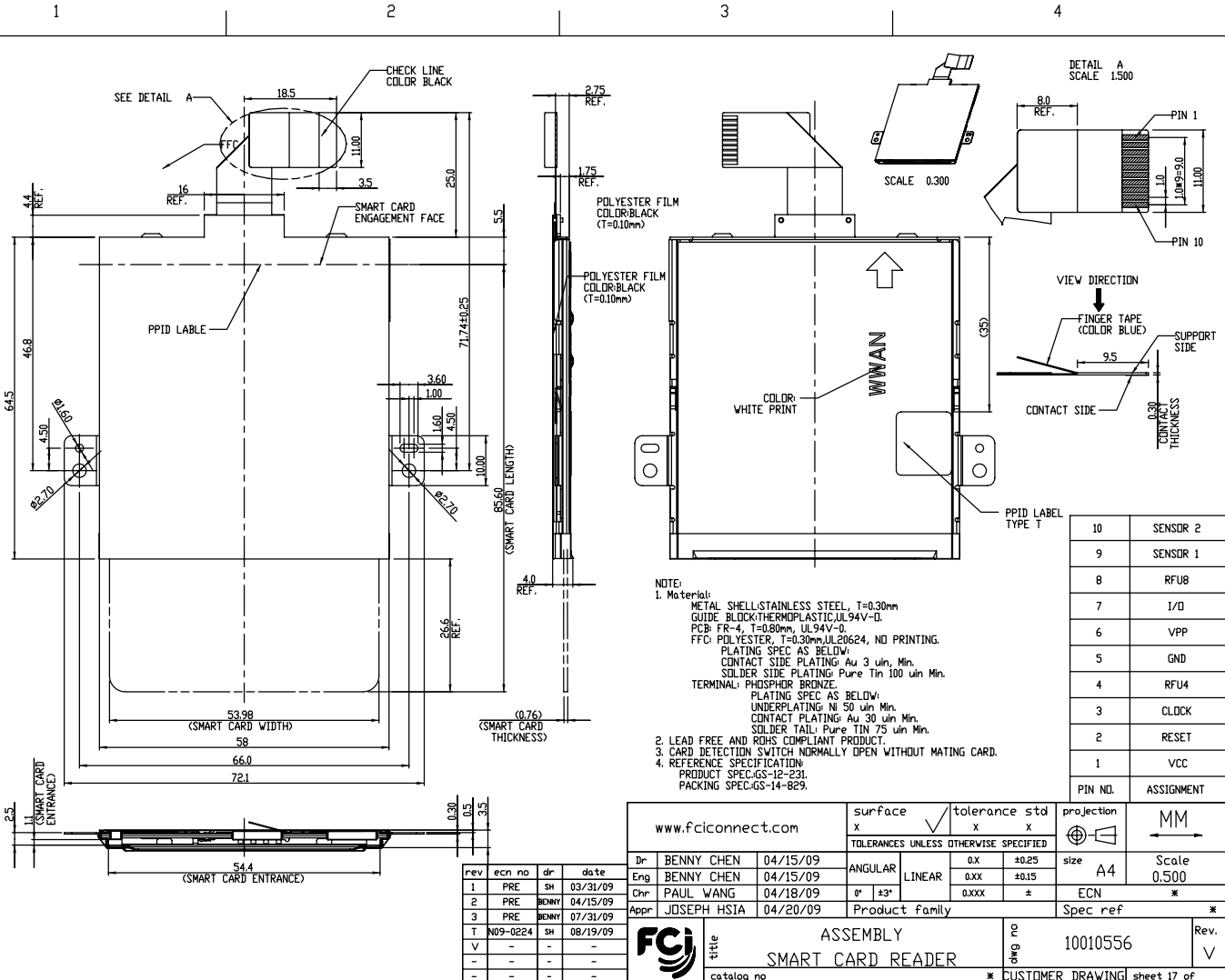
FPC PLATING SPEC AS BELOW:
CONTACT SURFACE: GOLD FLASH.
SOLDER TAIL: TIN PLATING.
 - CARD DETECTION SWITCH NORMALLY OPEN WITHOUT MATING CARD
 - REFERENCE SPECIFICATION:
PRODUCT SPEC. GS 12-231
PACKING SPEC. GS 14-829
 - THE AREA IS PROHIBITED TO PASTE THE MYLAR AND LABEL.
 - ALL PART SAME AS 10010556-011LF, EXCEPT FPC

Mark with 10010556-014LF REV. in area indicated by X....

rev	ecn no	dr	date
N	N08-0045	SH	05/08/08
P	N08-XXXX	SH	05/23/08
R	N08-0136	SH	07/07/08
v			

Material	Spec ref	tolerance	projection	MM
Mat code				
Heat treat				
Plating/Finish				
Br	MIAD SH	05/08/08	size	A4
Eng	MIAD SH	05/08/08	Scale	0.500
Chr	DANIEL TAD	05/08/08	Model Name	
Appr	JOSEPH HSA	05/08/08	Model Revision	
			ECN	
			REL Level	
FCI title		ASSEMBLY		Rev.
Pro/E file		catalog no		v
		part no	10010556	
		CUSTOMER DRAWING	sheet 16 of	

PART NUMBER
10010556-01SLF



NOTE:
1. Material:
METAL SHELL: STAINLESS STEEL, T=0.30mm
GUIDE BLOCK: THERMOPLASTIC, UL94V-0
PCB: FR-4, T=0.80mm, UL94V-0
FFC: POLYESTER, T=0.30mm, UL2024, NO PRINTING.
PLATING SPEC AS BELOW:
CONTACT SIDE PLATING: Au 3 uin, Min.
SOLDER SIDE PLATING: Pure Tin 100 uin Min.
TERMINAL: PHOSPHOR BRONZE.
PLATING SPEC AS BELOW:
UNDERPLATING: Ni 50 uin Min.
CONTACT PLATING: Au 30 uin Min.
SOLDER TAIL: Pure TIN 75 uin Min.
2. LEAD FREE AND ROHS COMPLIANT PRODUCT.
3. CARD DETECTION SWITCH NORMALLY OPEN WITHOUT MATING CARD.
4. REFERENCE SPECIFICATION:
PRODUCT SPEC: GS-12-231.
PACKING SPEC: GS-14-829.

rev	ecn no	dr	date
1	PRE	SH	03/31/09
2	PRE	BENNY	04/15/09
3	PRE	BENNY	07/31/09
T	N09-0224	SH	08/19/09
V	-	-	-
-	-	-	-

www.fciconnect.com		surface	tolerance	std	projection	MM
Dr	BENNY CHEN	04/15/09	x	x	MM	
Eng	BENNY CHEN	04/15/09	ANGULAR	LINEAR	size	A4
Chr	PAUL WANG	04/18/09	0° ±3°	0.0x ±0.25	Scale	0.500
Appr	JOSEPH HSIA	04/20/09	0.0xx ±	0.00x ±	ECN	*
Product family		Spec ref				
title		ASSEMBLY		10010556		Rev.
SMART CARD READER		* CUSTOMER DRAWING		sheet 17 of		

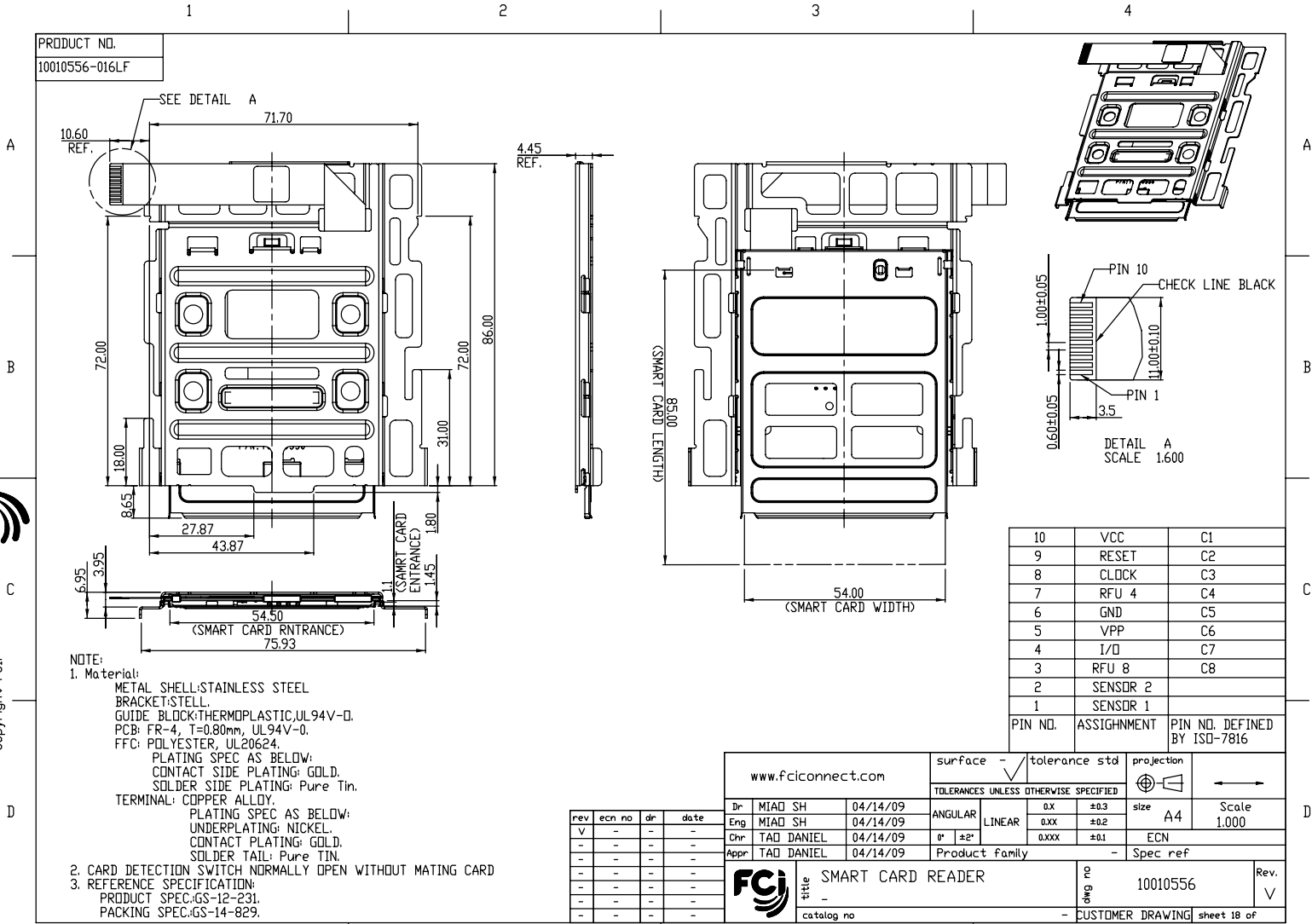


Copyright FCI.

REV: 000-007

3 PDM: Rev:V STATUS: Released 4 Printed: Mar 12, 2010

PRODUCT NO.
10010556-016LF



NOTE:

1. Material:

METAL SHELL: STAINLESS STEEL
 BRACKET: STEEL
 GUIDE BLOCK: THERMOPLASTIC, UL94V-0.
 PCB: FR-4, T=0.80mm, UL94V-0.
 FCC: POLYESTER, UL20624.
 PLATING SPEC AS BELOW:
 CONTACT SIDE PLATING: GOLD.
 SOLDER SIDE PLATING: Pure Tin.
 TERMINAL: COPPER ALLOY.

PLATING SPEC AS BELOW:
 UNDERPLATING: NICKEL.
 CONTACT PLATING: GOLD.
 SOLDER TAIL: Pure TIN.

2. CARD DETECTION SWITCH NORMALLY OPEN WITHOUT MATING CARD
 3. REFERENCE SPECIFICATION:
 PRODUCT SPEC: GS-12-231.
 PACKING SPEC: GS-14-829.

10	VCC	C1
9	RESET	C2
8	CLOCK	C3
7	RFU 4	C4
6	GND	C5
5	VPP	C6
4	I/O	C7
3	RFU 8	C8
2	SENSOR 2	
1	SENSOR 1	
PIN NO.	ASSIGNMENT	PIN NO. DEFINED BY ISO-7816

www.fciconnect.com		surface	tolerance std	projection	
		TOLERANCES UNLESS OTHERWISE SPECIFIED			
Dr	MIAD SH	04/14/09	ANGULAR	0X ±0.3	size A4 Scale 1.000
Eng	MIAD SH	04/14/09	LINEAR	0XX ±0.2	
Chr	TAD DANIEL	04/14/09	0° ±2°	0XXX ±0.1	ECN
Appr	TAD DANIEL	04/14/09	Product family	-	Spec ref
FCJ		title	SMART CARD READER	part no	10010556
		catalog no	-	CUSTOMER DRAWING	sheet 18 of

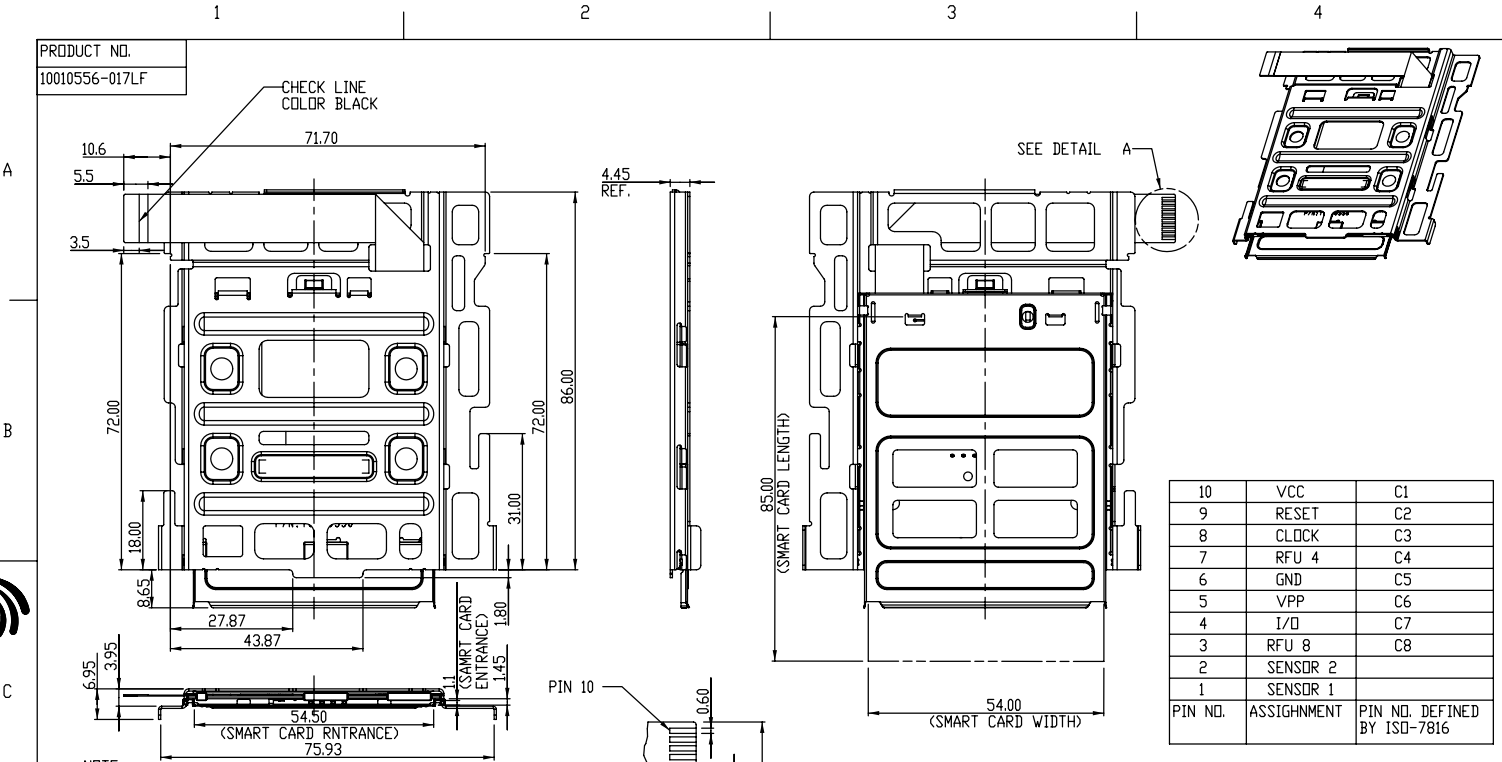


Copyright FCJ

rev	ecn no	dr	date
V	-	-	-
-	-	-	-
-	-	-	-
-	-	-	-
-	-	-	-
-	-	-	-

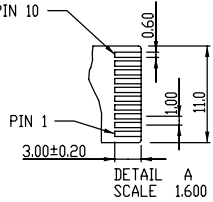
PRODUCT NO.
10010556-017LF

CHECK LINE
COLOR BLACK



10	VCC	C1
9	RESET	C2
8	CLOCK	C3
7	RFU 4	C4
6	GND	C5
5	VPP	C6
4	I/O	C7
3	RFU 8	C8
2	SENSOR 2	
1	SENSOR 1	
PIN NO.	ASSIGNMENT	PIN NO. DEFINED BY ISO-7816

NOTE:
1. Material:
METAL SHELL: STAINLESS STEEL
BRACKET: STEEL
GUIDE BLOCK: THERMOPLASTIC, UL94V-0.
PCB: FR-4, T=0.80mm, UL94V-0.
FFC: POLYESTER, UL20624.
PLATING SPEC AS BELOW:
CONTACT SIDE PLATING: GOLD FLASH 0.076µm MIN.
SOLDER SIDE PLATING: MATTE TIN.
TERMINAL: COPPER ALLOY.
PLATING SPEC AS BELOW:
UNDERPLATING: NICKEL.
CONTACT PLATING: GOLD 0.76µm MIN.
SOLDER TAIL: MATTE TIN.
2. CARD DETECTION SWITCH NORMALLY OPEN WITHOUT MATING CARD
3. REFERENCE SPECIFICATION:
PRODUCT SPEC: GS-12-231.
PACKING SPEC: GS-14-829.



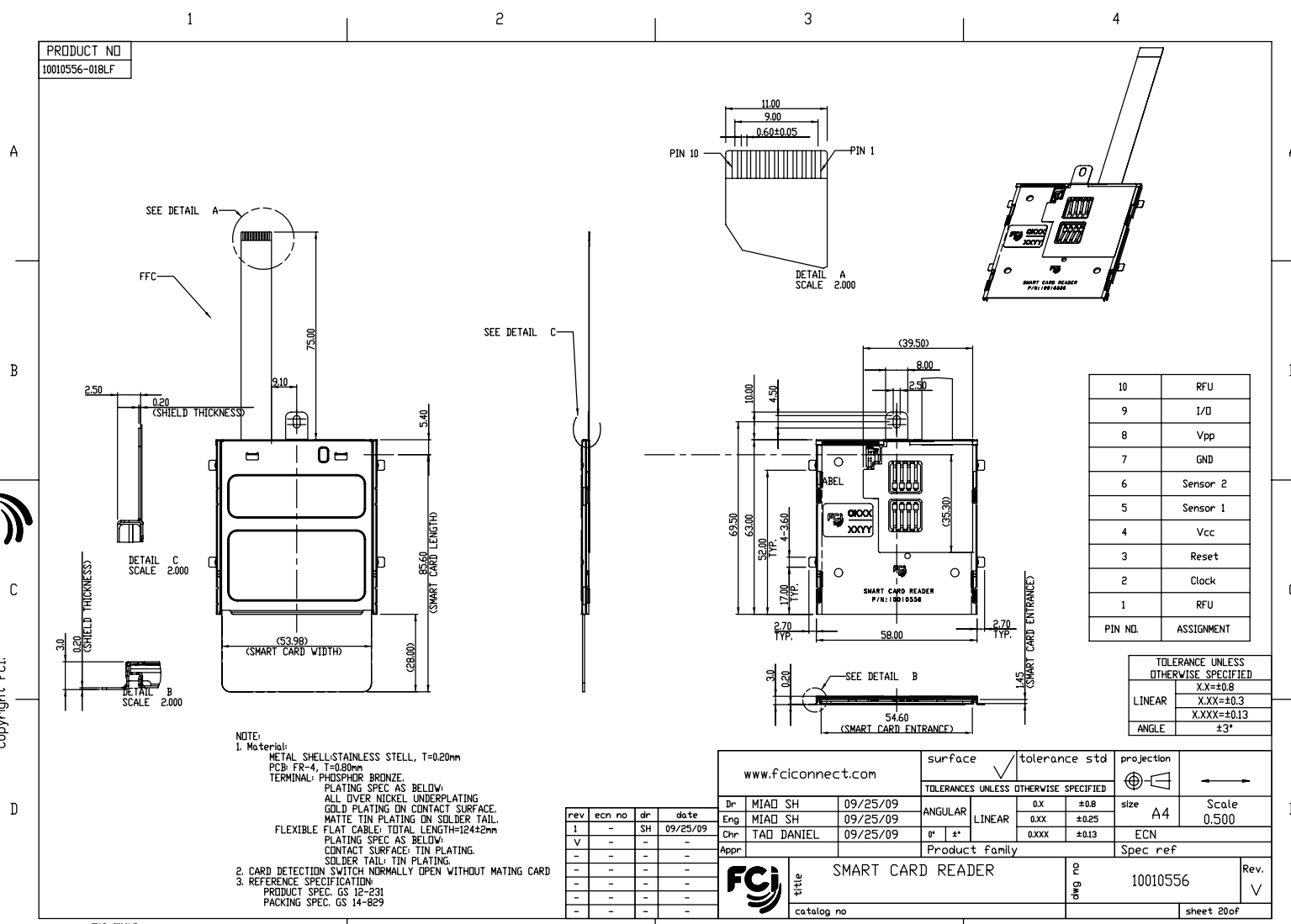
rev	ecn no	dr	date
1	N09-XXXX	SH	04/14/09
2	-	SH	07/16/09
V	-	-	-
-	-	-	-
-	-	-	-
-	-	-	-

www.fciconnect.com		surface	tolerance std	projection	
Dr MIAD SH 04/14/09		ANGULAR	±0.3	size A4	Scale 1.000
Eng MIAD SH 04/14/09		LINEAR	±0.2	ECN	
Chr TAD DANIEL 04/14/09		0° ±2°	±0.1	Spec ref	
Appr TAD DANIEL 04/14/09		Product family	-		
FCj title SMART CARD READER		part no	10010556	Rev.	V
catalog no		- CUSTOMER DRAWING		sheet 19 of	



Copyright FCj

PRODUCT NO
10010556-018LF



PIN NO.	ASSIGNMENT
10	RFU
9	I/O
8	Vpp
7	GND
6	Sensor 2
5	Sensor 1
4	Vcc
3	Reset
2	Clock
1	RFU

TOLERANCE UNLESS OTHERWISE SPECIFIED	
LINEAR	X.XX=±0.8 X.XXX=±0.3 X.XXX=±0.13
ANGLE	±3°

NOTE:
1. Material:
METAL SHELL: STAINLESS STEEL, T=0.20mm
PCB: FR-4, T=0.80mm
TERMINAL: PHOSPHOR BRONZE.
PLATING SPEC AS BELOW:
ALL OVER NICKEL UNDERPLATING
GOLD PLATING ON CONTACT SURFACE.
MATTIE TIN PLATING ON SOLDER TAIL.
FLEXIBLE FLAT CABLE: TOTAL LENGTH=124±2mm
PLATING SPEC AS BELOW:
CONTACT SURFACE: TIN PLATING.
SOLDER TAIL: TIN PLATING.
2. CARD DETECTION SWITCH NORMALLY OPEN WITHOUT MATING CARD
3. REFERENCE SPECIFICATION:
PRODUCT SPEC. GS 12-231
PACKING SPEC. GS 14-829

rev	ecn no	dr	date
1	-	SH	09/25/09
V	-	-	-
-	-	-	-
-	-	-	-
-	-	-	-
-	-	-	-

www.fciconnect.com		surface	tolerance std	projection	
Dr	MIAD SH	09/25/09	ANGULAR	LINEAR	size A4
Eng	MIAD SH	09/25/09	0° ±*	±0.8 ±0.25 ±0.13	Scale 0.500
Chr	TAD DANIEL	09/25/09	Product family		ECN
Appr			Product family		Spec ref
FCj		title SMART CARD READER		cat no	10010556
				Rev.	V
				sheet	20 of

Copyright FCj