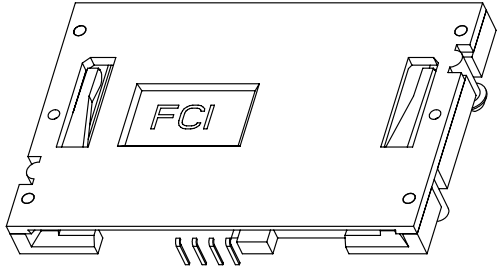


Tous droits strictement réservés. Reproduction ou communication, o des tiers interdite sous quelque forme que ce soit sans autorisation écrite du propriétaire. Propriété de c FCI. Droits de reproduction FCI.

All rights strictly reserved. Reproduction or issue to third parties in any form whatever is not permitted without written authority from the proprietor. Property of FCI. Copyright FCI.



- NOTES:
- L04 STANDARD READER LOW PROFILE 6.5mm HEIGHT.
 - DETECTOR TYPE: BLADE CONTACTS NORMALLY CLOSE.
 - MATERIAL:
CONTACT: PHOSPHOR BRONZE
HOUSING(BASE): UL 94V-0 PC.
COVER: UL 94V-0,PA46.
 - PLATING: 15u" MINIMUM GOLD IN CONTACT AREA;
120u" MINIMUM TIN-LEAD OR MATTE PURE TIN IN SOLDER TAIL AREA;
50u" MINIMUM NICKEL UNDERPLATE OVER ALL SURFACES.
 - IF LEAD FREE P/N, GS-14-920(PACKAGING SPEC) SHOULD BE APPLIED.
 - IF LF P/N, THE PRODUCT MEETS EUROPEAN UNION DIRECTIVES AND OTHER COUNTRY REGULATIONS AS DESCRIBED IN GS -22-008.
 - THE HOUSING WILL WITHSTAND EXPOSURE TO 260 ° PEAK TEMPERATURE FOR 5 SENCONDS IN A WAVE SOLDER APPLICATION WITH A 1.6mm MINIMUM THICKNESS CIRCUIT BOARD.
 - GENERAL TOLERANCE: 0 mm TO 10 mm: ±0.1 mm
10 mm TO 30 mm: ±0.15 mm
30 mm TO 60 mm: ±0.2 mm
>60 mm: ±0.3 mm
 - FLATNESS CONTROL WITHIN 0.25mm MAX.

10. 52436-2 * F LF
- LEAD FREE OPTION
 - BLADE CONTACTS NORMALLY CLOSE
 - 2: CONTACT PLATING 15u" Au OVER NICKEL.
 - 5: CONTACT PLATING 80u" Au OVER NICKEL.
 - NO. OF CONTACTS 2X4 POSITIONS

52436-2*F (LF)BOM STRUCTURE

ITEM	PART NUMBER	DESCRIPTION	QTY	REMARK
1	54028-115(LF)	SENSOR PIN 1	1PCS	
2	54028-215(LF)	SENSOR PIN 2	1PCS	
3	54031(LF)	BASE	1PCS	
3.1	54034-015/080(LF)	TERMINAL	8PCS	
3.2	P03794V	L04 HOUSING RESIN	0.006KG	
4	52383	COVER	1PCS	

CONFIDENTIAL

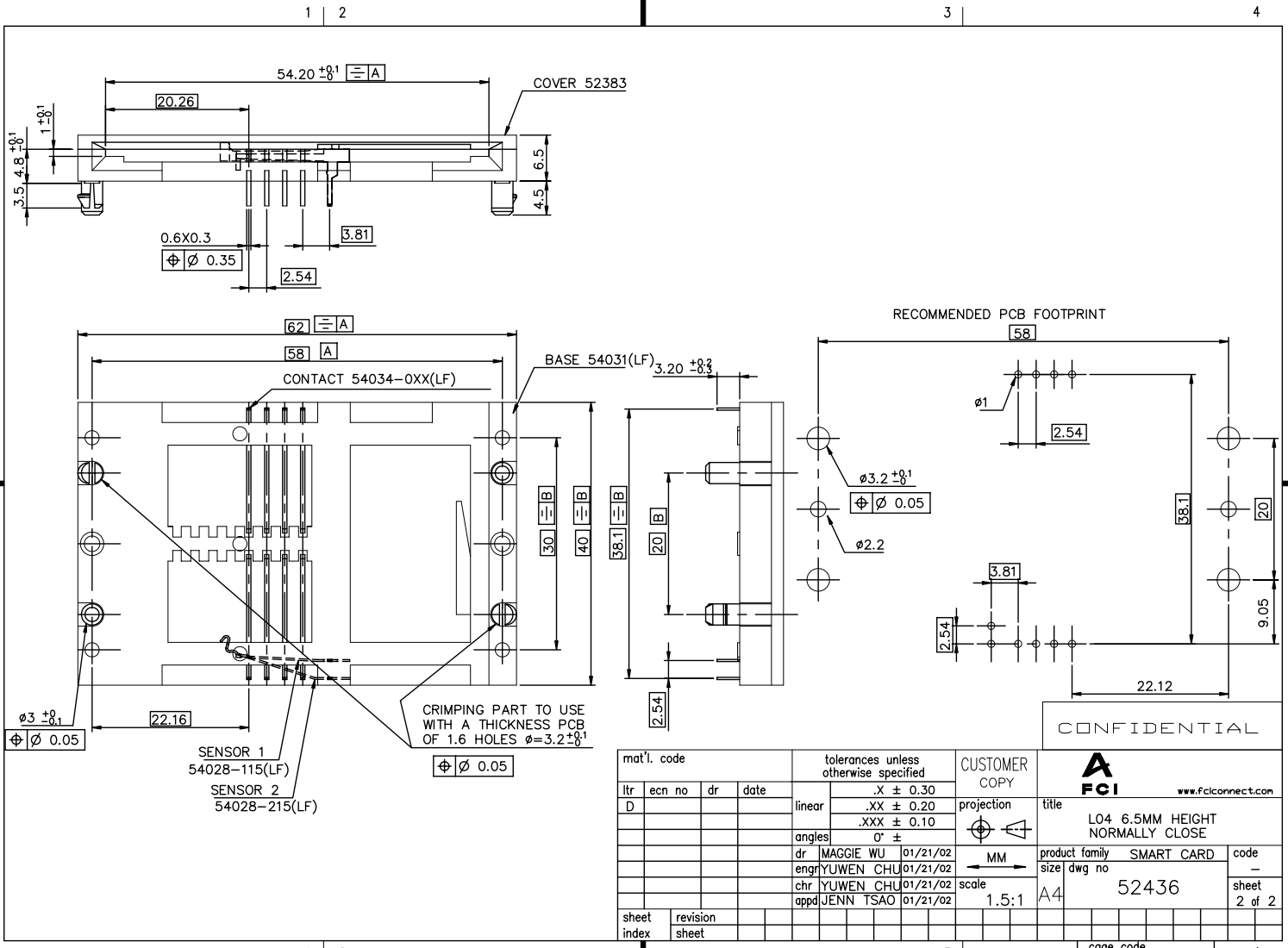
mat'l. code		tolerances unless otherwise specified		CUSTOMER COPY		www.fciconnect.com	
ltr	ecn no	dr	date	linear	.X ± 0.30	projection	title L04 6.5MM HEIGHT NORMALLY CLOSE
A	T90345	M	W 09/30/99		.XX ± 0.20		
B	T20027	M	W 01/21/02	angles	.XXX ± 0.10		product family
C	T03-0296	M	W 09/15/03		0' ±	size	dwg no
D	N05-0133	AILEI	05/24/05	dr	MAGGIE WU 01/21/02	scale	52436
				enrg	YUWEN CHU 01/21/02	1.5:1	sheet
				chr	YUWEN CHU 01/21/02		1 of 2
				appd	JENN TSAO 01/21/02		
sheet index	revision sheet	D	1				

ACAD PDM: Rev:D 3 STATUS: Released 2009 Sep 14, 2009

All rights strictly reserved. Reproduction or issue to third parties in any form whatever is not permitted without written authority from the proprietor. Property of FCI. Copyright FCI.

FCI A

Tous droits strictement réservés. Reproduction ou communication à des tiers interdite sous quelque forme que ce soit sans autorisation écrite du propriétaire. Propriété de FCI. Droits de reproduction FCI.



CONFIDENTIAL

mat'l. code		tolerances unless otherwise specified		CUSTOMER COPY		 www.fciconnect.com	
ltr	ecn no	dr	date	linear	.X ± 0.30	projection	title
D				angles	.XX ± 0.20	 MM	
					.XXX ± 0.10		product family
				dr	0 ±	size	52436
				engr	MAGGIE WU 01/21/02	scale	A4
				chr	YUWEN CHU 01/21/02	1.5:1	sheet
				appd	JENN TSAO 01/21/02		2 of 2
sheet index	revision						
	sheet						

ACAD

PDM: Rev:D

STATUS: Released

cage code 22026 Sep 25, 2009