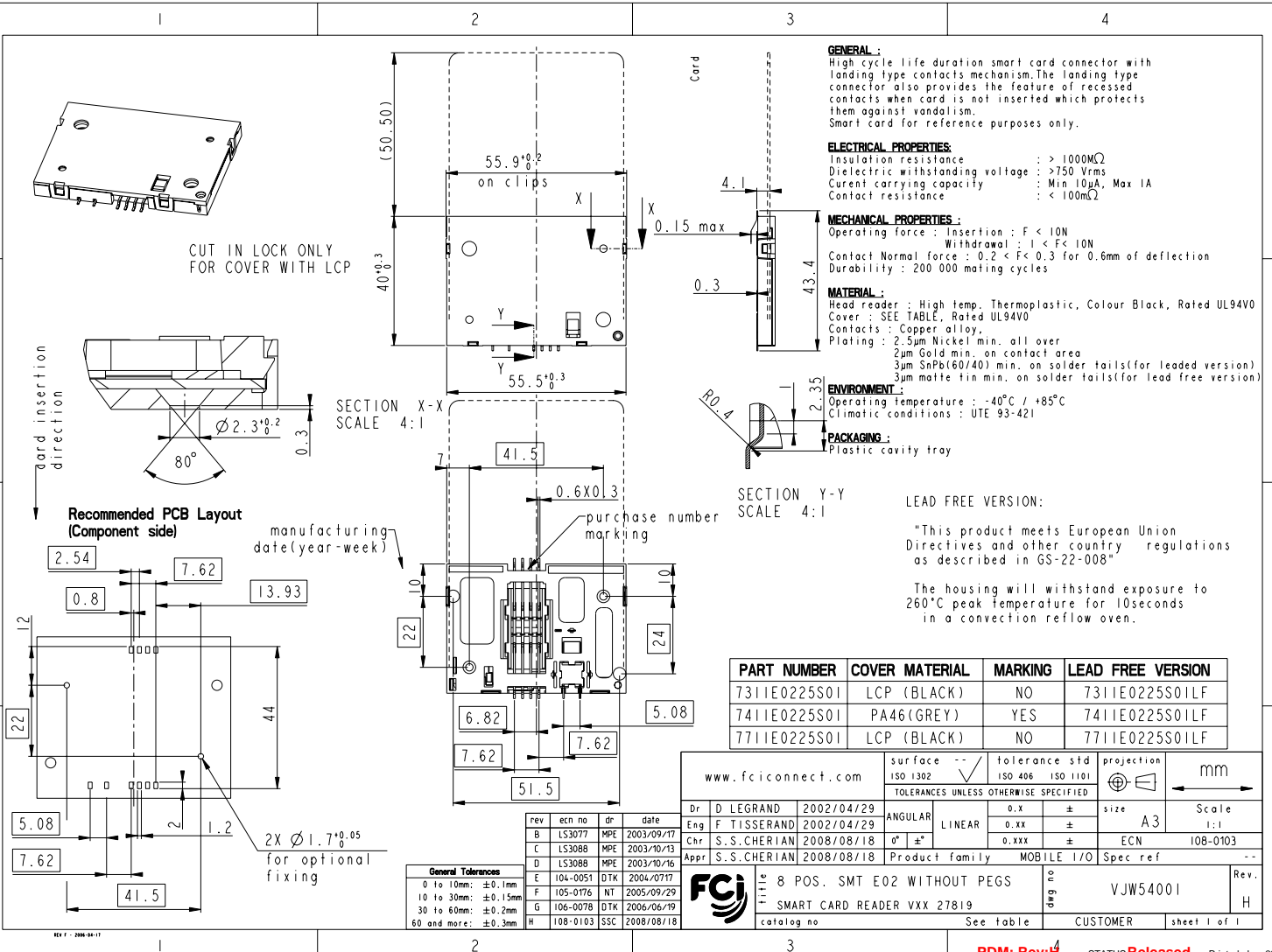


Copyright FCI



GENERAL :
High cycle life duration smart card connector with landing type contacts mechanism. The landing type connector also provides the feature of recessed contacts when card is not inserted which protects them against vandalism.
Smart card for reference purposes only.

ELECTRICAL PROPERTIES:
Insulation resistance : > 1000MΩ
Dielectric withstanding voltage : >750 Vrms
Current carrying capacity : Min 10µA, Max 1A
Contact resistance : < 100mΩ

MECHANICAL PROPERTIES :
Operating force : Insertion : F < 10N
Withdrawal : 1 < F < 10N
Contact Normal force : 0.2 < F < 0.3 for 0.6mm of deflection
Durability : 200 000 mating cycles

MATERIAL :
Head reader : High temp. Thermoplastic, Colour Black, Rated UL94V0
Cover : SEE TABLE, Rated UL94V0
Contacts : Copper alloy,
Plating : 2.5µm Nickel min. all over
2µm Gold min. on contact area
3µm SnPb(60/40) min. on solder tails(for leaded version)
3µm molte tin min. on solder tails(for lead free version)

ENVIRONMENT :
Operating temperature : -40°C / +85°C
Climatic conditions : UTE 93-421

PACKAGING :
Plastic cavity tray

LEAD FREE VERSION:
"This product meets European Union Directives and other country regulations as described in GS-22-008"
The housing will withstand exposure to 260°C peak temperature for 10seconds in a convection reflow oven.

| PART NUMBER | COVER MATERIAL | MARKING | LEAD FREE VERSION |
|--------------|----------------|---------|-------------------|
| 7311E0225S01 | LCP (BLACK) | NO | 7311E0225S01LF |
| 7411E0225S01 | PA46(GREY) | YES | 7411E0225S01LF |
| 7711E0225S01 | LCP (BLACK) | NO | 7711E0225S01LF |

| rev | ecn no | dr | date |
|-----|----------|-----|------------|
| B | LS3077 | MPE | 2003/09/17 |
| C | LS3088 | MPE | 2003/10/13 |
| D | LS3088 | MPE | 2003/10/16 |
| E | 104-0051 | DTK | 2004/07/17 |
| F | 105-0176 | NT | 2005/09/29 |
| G | 106-0078 | DTK | 2006/06/19 |
| H | 108-0103 | SSC | 2008/08/18 |

General Tolerances
0 to 10mm: ±0.1mm
10 to 30mm: ±0.15mm
30 to 60mm: ±0.2mm
60 and more: ±0.3mm

| | | | | | |
|---------------------------------------|-------------|-----------------------------|------------------|--------------|----------|
| www.fciconnect.com | | surface | tolerance std | projection | mm |
| | | ISO 1302 | ISO 406 ISO 1101 | | |
| TOLERANCES UNLESS OTHERWISE SPECIFIED | | | | | |
| Dr | D LEGRAND | 2002/04/29 | ANGULAR | 0.X | ± |
| Eng | F TISSERAND | 2002/04/29 | LINEAR | 0.XX | ± |
| Chr | S.S.CHERIAN | 2008/08/18 | 0° ±° | 0.XXX | ± |
| Appr | S.S.CHERIAN | 2008/08/18 | Product family | MOBILE I/O | Spec ref |
| FCI | | 8 POS. SMT E02 WITHOUT PEGS | | Rev. | |
| SMART CARD READER VXX 27819 | | catalog no | | VJW54001 | |
| See table | | CUSTOMER | | sheet 1 of 1 | |