



The CCM03 Series SIM/SAM Card Connector features an integrated card detection switch. This connector provides a competitive advantage to smart card reader device manufacturers by minimizing the space usage on the PCB, and features a side entry to offer convenient card access without opening the device. The unique design of this compact-size connector makes it ideal for telecommunications, portable electronics, POS terminals and similar applications, and meets GSM 11-11 specifications.

Features

- Unique card-guiding design.
- 6 spoon-shaped, gold-alloyed contacts resist wear and improve connectivity.
- Sealed card detection switches reduce connectivity problems caused by dust or moisture.
- Switch design detects and holds the card while providing firm contact.
- Unique side entry design offers card access without opening the device.
- Stainless steel cover and UL 94V-0 high-temperature thermoplastic insulator.

Construction

Insulator	High temperature thermoplastic UL 94V-0
Contacts	Copper Alloy
Contact finish	Gold Alloy Inlay
PC Tail plating	Tin lead (2 µm min)

Mechanical Data

Mechanical life	10,000 cycles minimum
Contact force	0.25 N min / 0.5 N max

Contact Electrical Data

Insulation resistance	1000 MΩ min
Resistance	100 mΩ max
Current rating	10 µA min / 1 A max
Dielectric strength	500 Vrms min

Switch Electrical Data

Card detection switch	Normally open
Contact resistance	100 mΩ max
Dielectric strength	250 Vrms min
Current rating	1 mA min / 10 mA max
Maximum power	0.2 VA

Environmental Data

Operating temperature	-40°C to +85°C
Soldering temperature	Temperature/time profile acc. to CECC00802 para. 6.1, Fig. 3 with peak temperature
Salt mist	IEC 512 test number 11f (96 hours)
Damp heat	IEC 512 test number 11c (10 days)

Ordering Code

Part Number	Number of contacts	Cover	Quantity per reel
CCM03-3752 R102	6	Without chamfer	1000
CCM03-3754 R102	6	With chamfer	1000

Other versions without cover, without switch, with ground terminals, contact your local Cannon Customer Service Center.

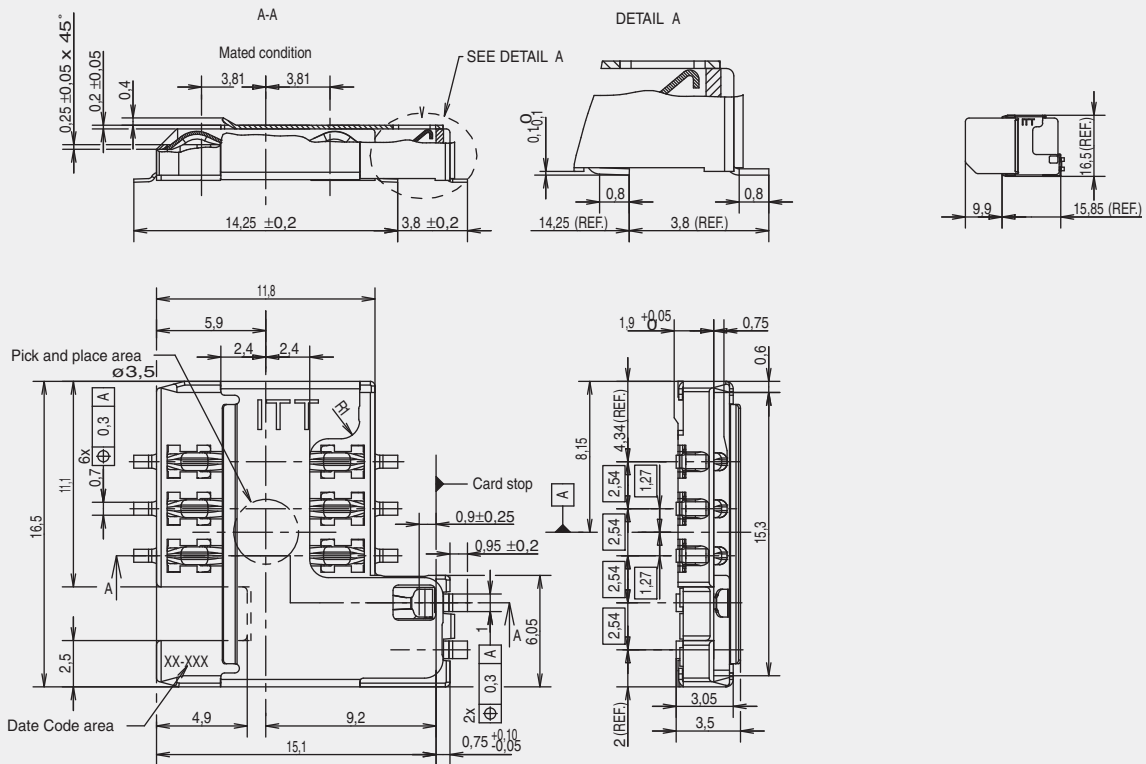
Packaging

5 reels per box.

CCM03 MK III

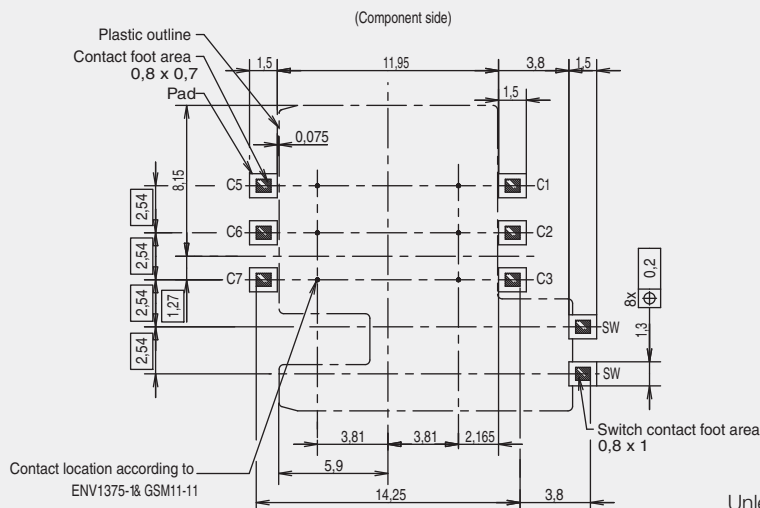
Dimensional Drawings

CCM03-3754



PCB Layout

CCM03-3754



Unless otherwise stated, tolerances are $\pm 0,10$ mm



Dimensions are shown in mm
Specifications and dimensions subject to change

www.ck-components.com