

4

3

2

1

THIS DRAWING IS UNPUBLISHED. RELEASED FOR PUBLICATION. ALL RIGHTS RESERVED.

| LOC | DIST | REVISIONS |     |                               |         |    |      |
|-----|------|-----------|-----|-------------------------------|---------|----|------|
| AD  | 00   | P         | LTR | DESCRIPTION                   | DATE    | BY | APPD |
|     |      |           |     | AM3 REVISED PER ECO-11-004587 | 11MAR11 | RK | HMR  |

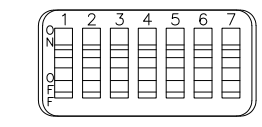
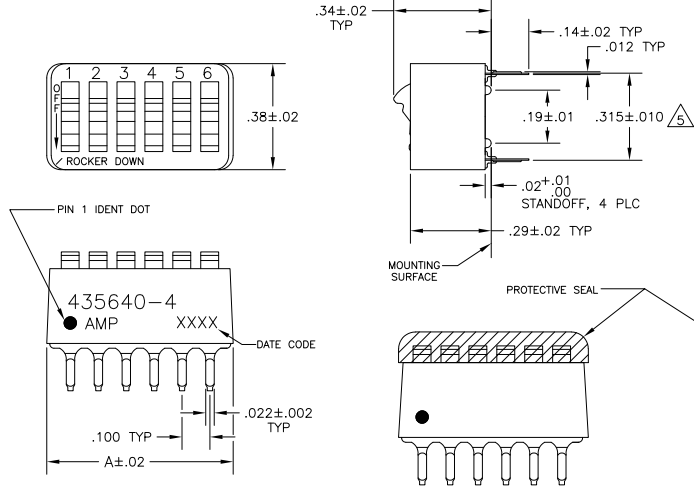


FIG 2

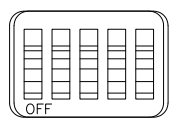


FIG 3

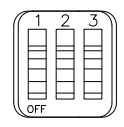


FIG 4

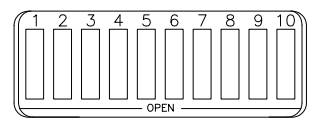


FIG 5

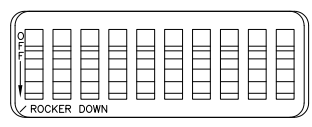


FIG 6

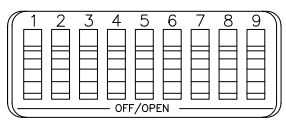


FIG 7

- FOR ADDITIONAL SPECIFICATIONS SEE AMP PRODUCT SPEC 108-7532.
  - SWITCH SHOWN IN OPEN POSITION.
  - ALL CHARACTERS AND ROCKERS ARE WHITE, HOUSING IS BLUE.
  - STAMPING WILL VARY ON 2 AND 3 POSITION SIDES DUE TO SPACE RESTRICTIONS.
- △ .315 DIMENSION APPLIES AT TERMINAL TIPS.  
 TERMINALS ARE .300±.010 AT MOUNTING SURFACE.
- △ STRIPPABLE TRANSPARENT SEAL, SEE FIG 1.

| FIG                    | DESCRIPTION | QTY  | UNIT | REF        | QTY | UNIT | REF |
|------------------------|-------------|------|------|------------|-----|------|-----|
| △ OBSOLETE             | FIG 6       | 1.08 | 10   | 6-435640-1 |     |      |     |
| △ OBSOLETE             | FIG 7       | .58  | 5    | 6-435640-0 |     |      |     |
| △ OBSOLETE             | FIG 5       | .48  | 4    | 5-435640-9 |     |      |     |
| △ OBSOLETE             | FIG 5       | .88  | 8    | 5-435640-8 |     |      |     |
| △ SUPSD BY 5-5435640-4 | FIG 5       | .98  | 9    | 5-435640-7 |     |      |     |
| △ OBSOLETE             | FIG 2       | .68  | 6    | 5-435640-6 |     |      |     |
| △ OBSOLETE             | FIG 5       | .58  | 5    | 5-435640-5 |     |      |     |
| △ SUPSD BY 4-5435640-8 | FIG 5       | .48  | 4    | 5-435640-4 |     |      |     |
| △ SUPSD BY 3-435668-3  | FIG 3       | .88  | 8    | 5-435640-3 |     |      |     |
| △ SUPSD BY 2-435668-4  | FIG 3       | 1.08 | 10   | 5-435640-2 |     |      |     |
| AS SHOWN               | FIG 3       | .88  | 8    | 5-435640-0 |     |      |     |
| AS SHOWN               | FIG 3       | .88  | 8    | 4-435640-9 |     |      |     |
| AS SHOWN               | FIG 3       | .58  | 5    | 4-435640-8 |     |      |     |
| AS SHOWN               | FIG 3       | .48  | 4    | 4-435640-7 |     |      |     |
| AS SHOWN               | FIG 3       | .38  | 3    | 4-435640-6 |     |      |     |
| AS SHOWN               | FIG 3       | .28  | 2    | 4-435640-5 |     |      |     |
| AS SHOWN               | FIG 4       | 1.28 | 12   | 3-435640-3 |     |      |     |
| AS SHOWN               | FIG 4       | .38  | 3    | 3-435640-0 |     |      |     |
| AS SHOWN               | FIG 4       | .28  | 2    | 2-435640-9 |     |      |     |
| OBSOLETE               | FIG 2       | .78  | 7    | 2-435640-2 |     |      |     |
| AS SHOWN               | FIG 2       | 1.08 | 10   | 435640-7   |     |      |     |
| AS SHOWN               | FIG 2       | .98  | 9    | 435640-6   |     |      |     |
| AS SHOWN               | FIG 2       | .88  | 8    | 435640-5   |     |      |     |
| AS SHOWN               | FIG 2       | .68  | 6    | 435640-4   |     |      |     |
| AS SHOWN               | FIG 2       | .58  | 5    | 435640-3   |     |      |     |
| AS SHOWN               | FIG 2       | .48  | 4    | 435640-2   |     |      |     |
| AS SHOWN               | FIG 2       | .78  | 7    | 435640-1   |     |      |     |

△ OBSOLETE PARTS: OBSOLETE CIS STREAMLINING PER D.RENAUD/D.SINISI

THIS DRAWING IS A CONTROLLED DOCUMENT. DATE: 15NOV99

DESIGNED BY: R.TALLEY  
 CHECKED BY: G.MILLER  
 DRAWN BY: J.LLEITER  
 APPLICATION SPEC: PRODUCT SPEC

MATERIAL: HOUSING & ROCKERS: POLYESTER  
 CONTACTS: COPPER ALLOY  
 FINISH: CONTACTS PLATED (20000 MIN GOLD IN CONTACT AREA OVER 200000 MIN NICKEL)

SIZE: A2  
 CASE CODE: 00779  
 DRAWING NO: 435640

CUSTOMER DRAWING  
 SCALE: 4:1  
 SHEET: 1 of 1  
 REV: AM3

TE Connectivity  
 SWITCH ASSY, DIP, TYPE C,  
 7100 SERIES, SPST, STANDARD

435640

A