

- Low Cost
- 3 Year Warranty
- Low Cost
- 3 Year Warranty
- Semi F47 Compliant (DLP180&240 only)
- Convection Cooled
- Conducted and Radiated EMI, Class B
- Input Transient Protection, IEC61000-4
- NEC Class 2 Compliant (DLP75&100/C2 models only)

## DLP Series

75 to 240W, 24V Output  
DIN Rail Mount Power Supply

### Key Market Segments & Applications

- Industrial Controls: Motor Control Systems
- Factory Automation: Process Control, Automotive, Chemical Processing
- Test & Measurement: Burn in & Test, Instrumentation Measurement

### DLP Features and Benefits

#### Features

- PFC Compliant to EN61000-3-2
- UL508 Approvals
- 3 Year Warranty

#### Benefits

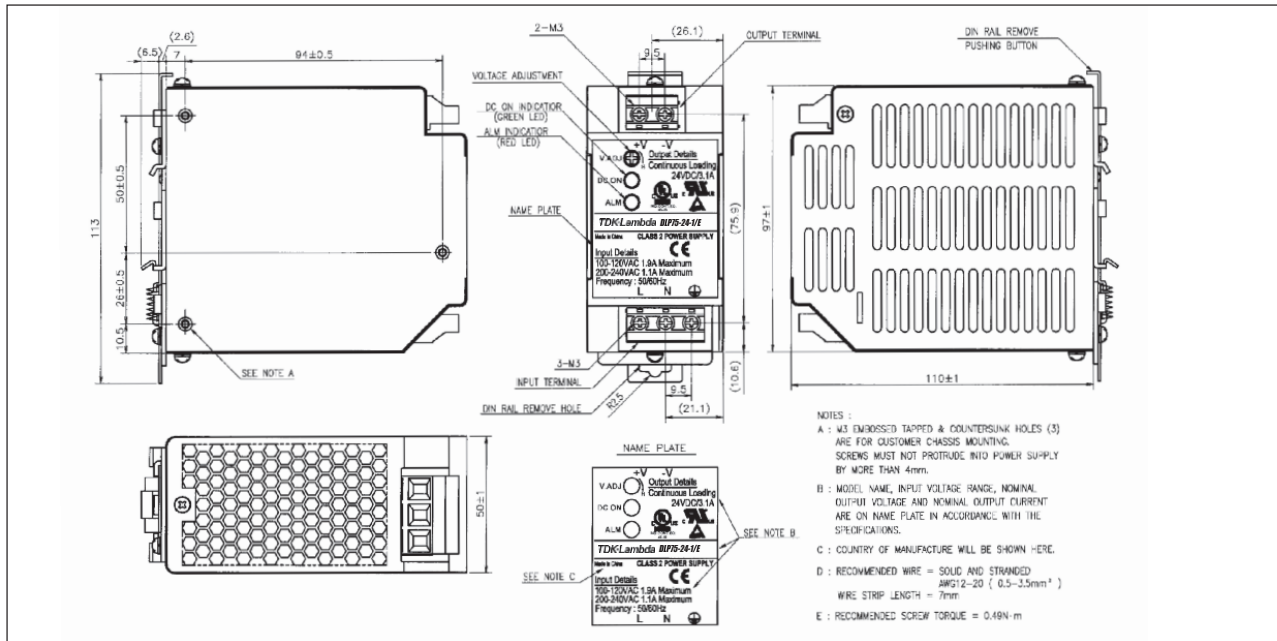
- Supports Global Use
- Enables System Certification
- Fix & Forget

### Specifications

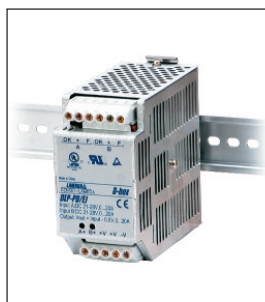
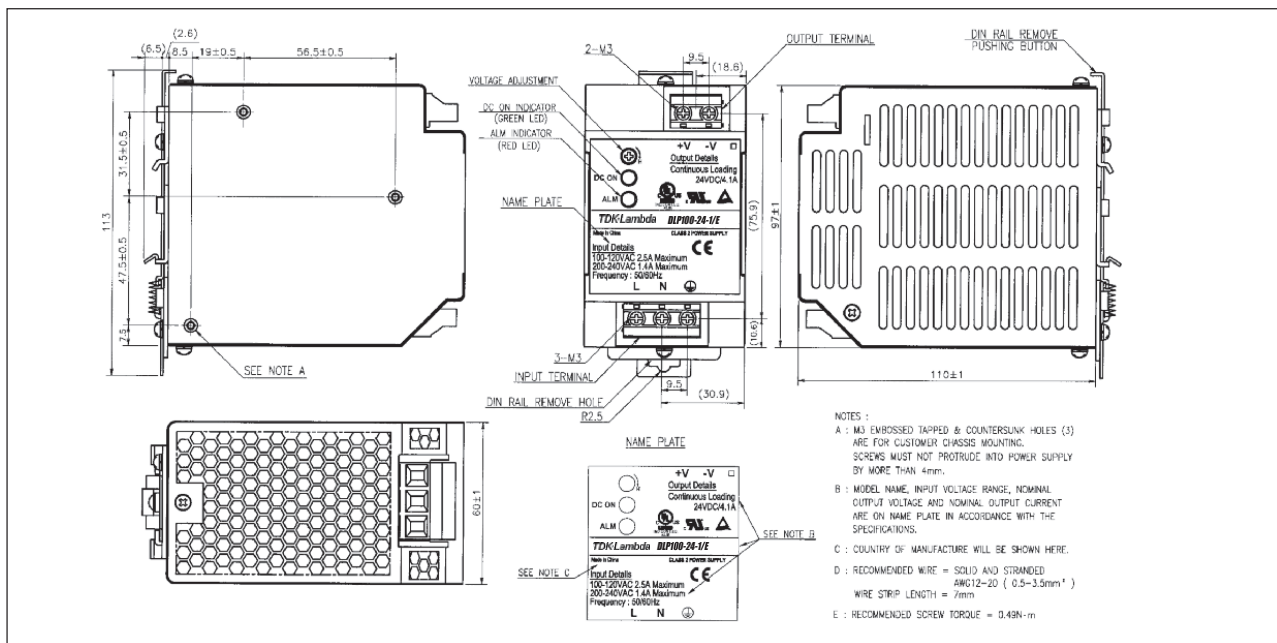
ITEMS	MODELS	DLP75-24-1/E	DLP100-24-1/E	DLP120-24-1/E	DLP180-24-1/E	DLP240-24-1/E
		DLP75-24-1/C2EJ	DLP100-24-1/C2EJ			
Output Voltage	V	24	24	24	24	24
Output Current (/C2 models)	A	3.1 (2.5)	4.1 (3.7)	5.0	7.5	10
Output Power (/C2 models)	W	75 (60)	98.4 (88.8)	120	180	240
Output Voltage Adjustment	V	21.6 - 28 (fixed for /C2 models)				
Load Regulation	mV	192				
Line Regulation	mV	120				
Ripple/Noise (0-60°C)	mV	240				
AC Input Voltage & Frequency	-	85-132/170-265VAC, 47-63Hz Auto select			85-265VAC (47-63Hz) or 120-370VDC <sup>(1)</sup>	
Input Current 100/230VAC	A	1.7/0.8	2.3/1.2	2.4/1.3	2.3/1.0	3.0/1.3
	/C2	A	1.4/0.7	2.0/1.0	-	-
Efficiency 100/230VAC	%	81/83	82/85	83/85	84/87	82/86
Power Factor	-	Meets EN61000-3-2 (DLP180, 240: >0.95)				
Inrush Current(Typ)100/230VAC	A	20/45				
Leakage Current	mA	Less than 0.75				
Hold-up Time 100/230VAC	ms	20/30 (Semi F47 Compliance, DLP 180 & 240 only)				
Overcurrent Protection	-	>105%, Fold Back			>105%, Constant Current	
	/C2	-	~2.6A	~3.75A	-	
Overvoltage Protection	-	30-35V, latching, cycle AC line to reset (26-30V DLP75-24-1/C2EJ)				
LED Indicators	-	Green LED = DC ok Red LED = overcurrent				
Operating Temperature	(2)	Convection cooled, -10 to 60, derate linearly to 60% load from 50 to 60				
Storage Temperature	°C	-30~+85				
Humidity (Non-Condensing)	%RH	30-90% operating 10-95% non operating				
Withstand Voltage	-	Input - Ground 2kVAC, Input to Output 3kVAC, Output - Ground 500VAC				
Vibration	-	9.8m/s <sup>2</sup> (1.0G) at DIN rail; (10-55Hz: 9.8m/s <sup>2</sup> Constant, X, Y, Z each 1 hour)				
Shock	-	196m/s <sup>2</sup> (20G)				
Safety Agency Approvals	-	UL508, NEC Class 2(3) (/C2 models), UL60950, CSA60950, EN60950, CE, EN50178 Cat III (Pri)				
Conducted EMI	-	FCC-B, EN55011/EN55022-B, VCCI-B; Meets IEC61000-4-1				
Radiated EMI	-	EN55011/EN55022-B, FCC-Class B, VCCI-B				
ESD	-	IEC61000-4-2 ±10kV (Air), ±5kV (Contact)				
Radiated RFI	-	IEC61000-4-3 80-1000MHz, 12V/m 80% AM 1kHz				
Fast Transient Burst	-	IEC61000-4-4 2.4kV 5kHz				
Lightning Surge	-	IEC61000-4-5 4.4kV, 1.2x50µs (Common Mode) 2.4kV 1.2x50µs (Normal)				
Conducted RFI	-	IEC61000-4-6 150kHz-80MHz, 12V, 80% AM 1kHz				
Magnetic Field	-	IEC61000-4-8 36A/m				
Voltage Dips	-	IEC61000-4-11 70% 10ms, 40% 100ms, 0% 5s				
Size	mm	50 x 97 x 110	60 x 97 x 110	60 x 97 x 110	80 x 97 x 110	120 x 97 x 110
Weight	g	470	540	540	780	1000
Warranty	-	3 Years				



Outline Drawing DLP75 Series



Outline Drawing DLP100/120 Series



Also available DLP-PU parallel unit for redundancy

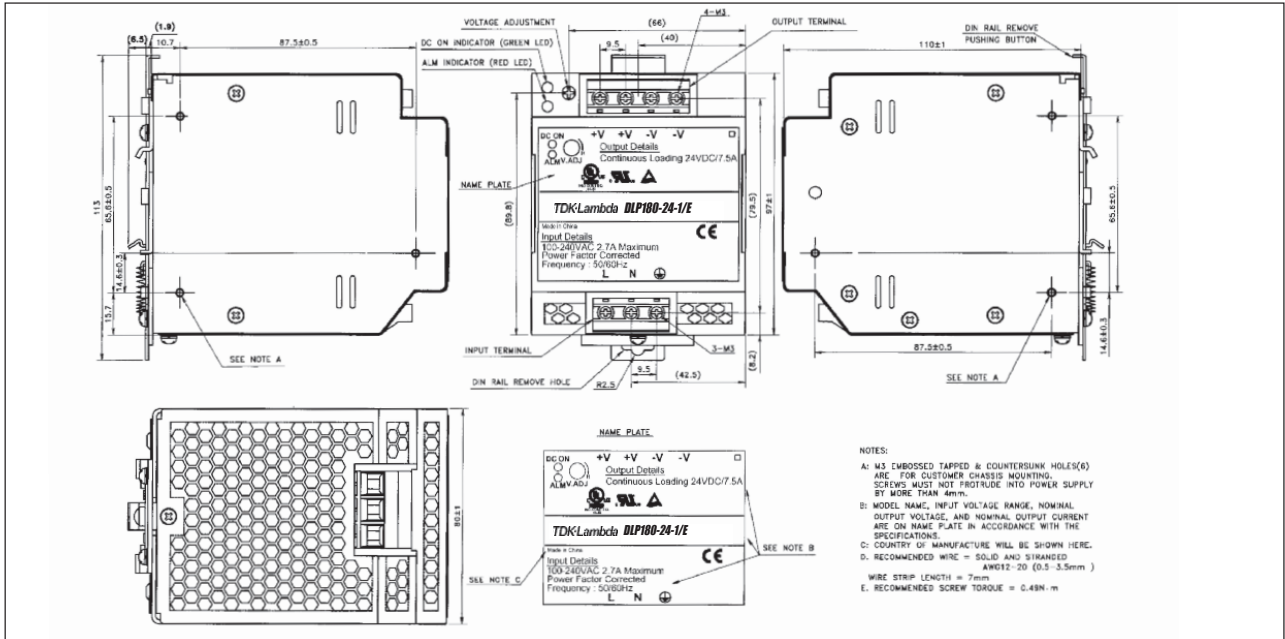
- Notes: (1) DC input is not safety approved  
 (2) DLP240-24-1/E: 170-265VAC: -10°C~+70°C, derated linearly to 60% load from 50° to 70°C.

DLP75-24-1/C2EJ: -10°C~+70°C, derated linearly to 75% load from 50° to 60°C.  
 DLP100-24-1/C2EJ: -10°C~+70°C, derated linearly to 80% load from 50° to 60°C.

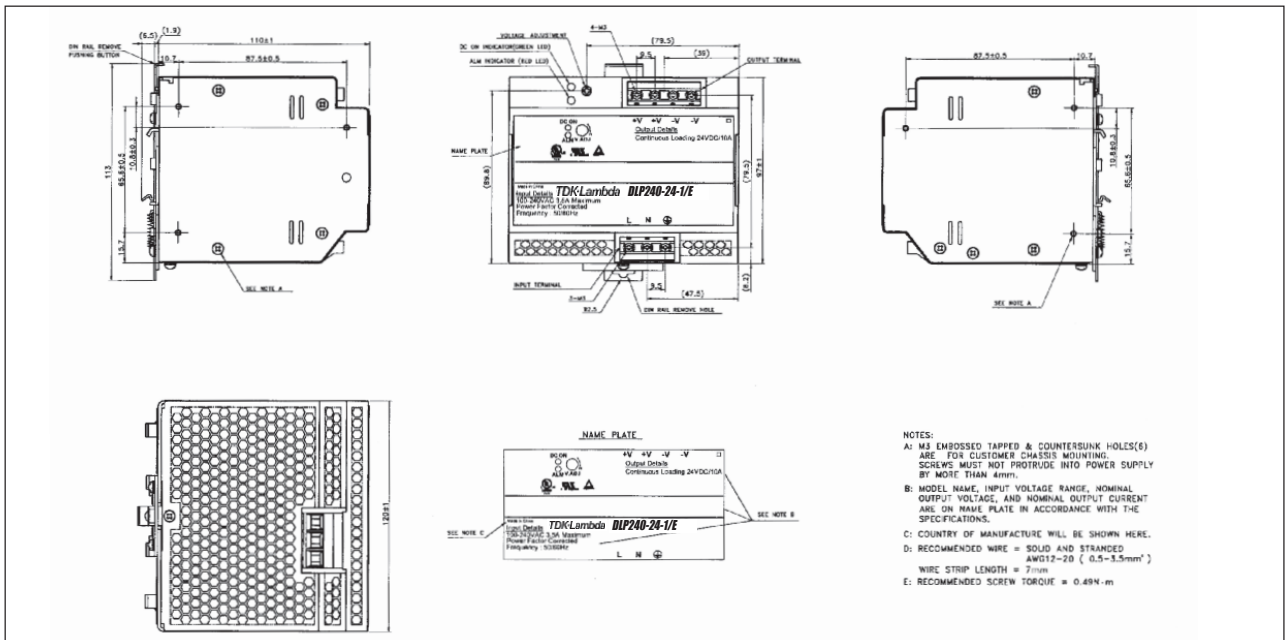
For full data and drawings please visit [www.emea.tdk-lambda.com/www/dlp](http://www.emea.tdk-lambda.com/www/dlp)



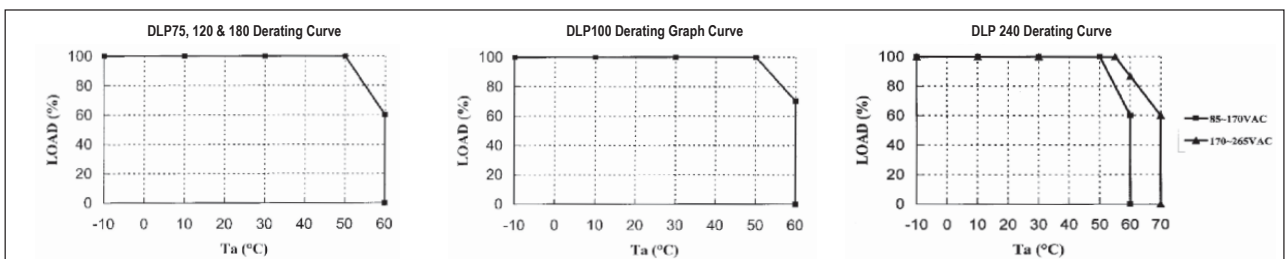
Outline Drawing DLP180 Series



Outline Drawing DLP240 Series



Derating Curve DLP





TDK-LAMBDA EMEA

www.emea-tdk-lambda.com



**TDK-Lambda France SAS**

ZAC des Delaches  
BP 1077-Gometz-le-Chatel  
91940 Les Ulis  
France  
Tel: +33 1 60 12 71 65  
Fax: +33 1 60 12 71 66  
france@fr.tdk-lambda.com  
www.fr.tdk-lambda.com



**Italy Sales Office**  
Via dei Laboratori 128/130  
20092 Cinisello Balsamo (MI)  
Italy  
Tel: +39 02 61 29 38 63  
Fax: +39 02 61 29 09 00  
info.italia@it.tdk-lambda.com  
www.it.tdk-lambda.com



**TDK-Lambda Germany GmbH**

Karl-Bold-Strasse 40  
77855 Achern  
Germany  
Tel: +49 7841 666 0  
Fax: +49 7841 5000  
info.germany@de.tdk-lambda.com  
www.de.tdk-lambda.com



**Austria Sales Office**  
Aredstrasse 22  
2544 Leobersdorf  
Austria  
Tel: +43 2256 655 84  
Fax: +43 2256 645 12  
info.germany@de.tdk-lambda.com  
www.de.tdk-lambda.com



**TDK-Lambda UK Ltd.**

Kingsley Avenue  
Ilfracombe  
Devon EX34 8ES  
United Kingdom  
Tel: +44 (0) 12 71 85 66 66  
Fax: +44 (0) 12 71 86 48 94  
powersolutions@uk.tdk-lambda.com  
www.uk.tdk-lambda.com



**Nemic Lambda Ltd.**

Kibbutz  
Givat Hashlosha 48800  
Israel  
Tel: +9 723 902 4333  
Fax: +9 723 902 4777  
info@nemic.co.il  
www.nemic.co.il



**Russia**

Technical Support:  
St Petersburg  
Tel: +7 (812) 6580463  
Sales:  
Moscow  
Tel: +7 (499) 7557732  
info@tdk-lambda.ru  
www.tdk-lambda.ru

LOCAL DISTRIBUTION

