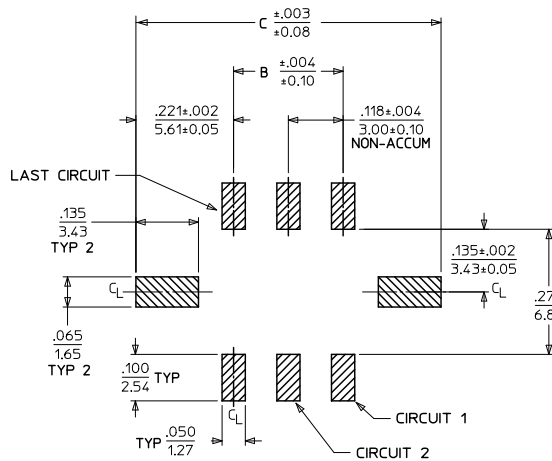
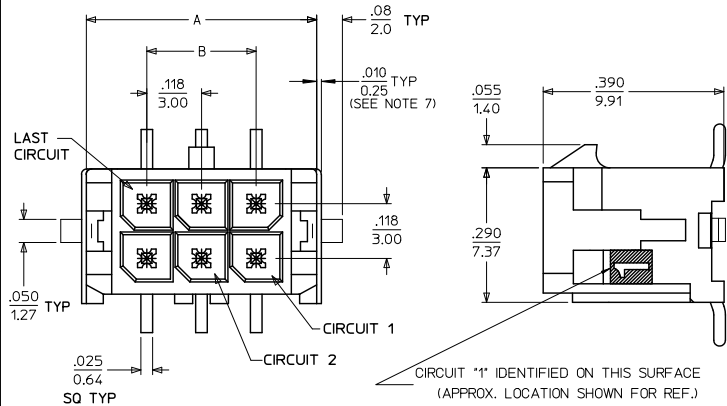
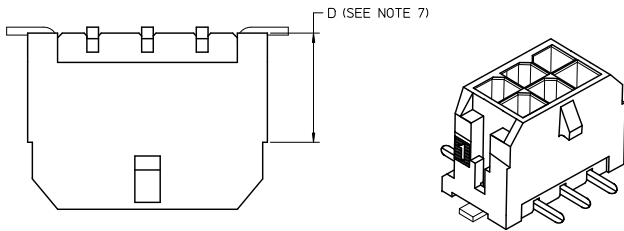
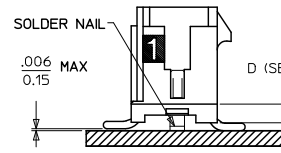


13 12 11 10 9 8 7 6 5 4 3 2 1

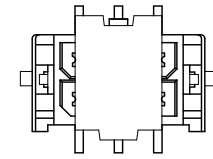


CKTS	A	B	C
02	.262		.441
	6.65	NA	11.20
04	.380	.118	.559
	9.65	3.00	14.20
06	.498	.236	.677
	12.65	6.00	17.20
08	.616	.354	.795
	15.65	9.00	20.20
10	.734	.472	.913
	18.65	12.00	23.20
12	.852	.591	1.031
	21.65	15.00	26.20
14	.970	.709	1.150
	24.65	18.00	29.20
16	1.088	.827	1.268
	27.65	21.00	32.20
18	1.206	.945	1.386
	30.65	24.00	35.20
20	1.325	1.063	1.504
	33.65	27.00	38.20
22	1.443	1.181	1.622
	36.65	30.00	41.20
24	1.561	1.299	1.740
	39.65	33.00	44.20

PCB LAYOUT: COMPONENT SIDE



COPLANARITY DETAIL  
SEE NOTE #6



SHOWN WITH DISPOSABLE CAP  
(FOR REMOVAL FROM TAPE & REEL PACKAGING)  
SEE NOTE #4

\*X\* - DENOTES NOT AVAILABLE, CONSULT FACTORY  
SEE NOTE #4

CKTS	FINISH A			FINISH B			FINISH C			
	MATERIAL NO.	FINISH A	FINISH B	MATERIAL NO.	FINISH A	FINISH B	MATERIAL NO.	FINISH A	FINISH B	FINISH C
02	43045-0239			43045-0243			43045-0237			
04	43045-0439			43045-0443			43045-0437			
06	X 43045-0639			X 43045-0643			X 43045-0637			
08	43045-0839			43045-0843			43045-0837			
10	43045-1039			43045-1043			43045-1037			
12	43045-1239			43045-1243			43045-1237			
14	43045-1439			43045-1443			43045-1437			
16	43045-1639			43045-1643			43045-1637			
18	X 43045-1839			X 43045-1843			X 43045-1837			
20	43045-2039			43045-2043			43045-2037			
22	X 43045-2239			X 43045-2243			X 43045-2237			
24	X 43045-2439			X 43045-2443			X 43045-2437			

NOTES:

- HOUSING MATERIAL: GLASS FILLED LIQUID CRYSTAL POLYMER, UL94V-0, COLOR: BLACK  
TERMINAL MATERIAL: BRASS ALLOY
- FINISH: A = .000100/(0.00254) MIN. TIN OVER  
.000050/(0.00127) MIN. NICKEL PLATE.  
B = .000015/(0.00038) MIN. SELECT GOLD IN CONTACT AREA,  
.000100/(0.00254) MIN. SELECT MATTE TIN ON SOLDER TAILS,  
BOTH OVER .000050/(0.00127) MIN. NICKEL PLATE.  
C = .000030/(0.00076) MIN. SELECT GOLD IN CONTACT AREA,  
.000100/(0.00254) MIN. SELECT MATTE TIN ON SOLDER TAILS,  
BOTH OVER .000050/(0.00127) MIN. NICKEL PLATE.
- PRODUCT SPECIFICATION: PS-43045
- TAPE AND REEL PACK: SEE MOLEX DRAWING PK-70873-09\*\*  
NON-STANDARD TAPE (SHALLOW POCKET), NOT ALL CIRCUIT SIZES  
AVAILABLE, SEE DRAWING SD-43045-007 FOR STANDARD TAPE & PACKAGING
- MATES WITH MICRO FIT (3.0) RECEPTACLE SERIES 43025
- THE COPLANARITY DIMENSION IS ESTABLISHED BY PLACING THE ASSEMBLY  
ON A FLAT SURFACE. THE DISTANCE FROM THAT SURFACE TO THE BOTTOM  
OF ANY TERMINAL OR SOLDER NAIL MUST NOT EXCEED .006/0.15
- CIRCUIT SIZES 2-6: "D" IS .265/6.74 FOR .010/0.25 STEP.  
CIRCUIT SIZES 8-24: "D" IS .063/1.60 FOR .010/0.25 STEP.
- THIS PART CONFORMS TO CLASS B REQUIREMENTS OF COSMETIC SPECIFICATION  
PS-45499-002.

ADD "D" DIM EC NO. UCP2011-0508 2010/08/26 G. DRWINGIRAMANI CHK:SSUSEK 2010/08/26 APPR:SMITH 2010/12/23	QUALITY SYMBOLS	GENERAL TOLERANCES (UNLESS SPECIFIED)	DIMENSION STYLE IN/MM	SCALE ---	DESIGN UNITS METRIC	THIRD ANGLE PROJECTION
	▽=0	4 PLACES ± --- ± ---	mm INCH	DRAWN BY DATE	TITLE	
	▽=0	3 PLACES ± --- ± .010		SAMIEC 2000/03/15	MICRO FIT (3.0)	
	▽=0	2 PLACES ± .025 ± .014		CHECKED BY DATE	DUAL ROW VERTICAL SMT	
	1 PLACE ± 0.36 ± ---		MUELLER 2000/03/15	HEADER W/NAILS ASSY		
	ANGULAR ±1/2°		APPROVED BY DATE	MOLEX INCORPORATED		
			EDGLEY 2000/03/15	MOLEX INCORPORATED		
	DRAFT WHERE APPLICABLE MUST REMAIN WITHIN DIMENSIONS		MATERIAL NO. SEE CHART	DOCUMENT NO. SD-43045-012		SHEET NO. 1 OF 1
			SIZE C	THIS DRAWING CONTAINS INFORMATION THAT IS PROPRIETARY TO MOLEX INCORPORATED AND SHOULD NOT BE USED WITHOUT WRITTEN PERMISSION		

12 11 10 9 8 7 6 5 4 3 2 1