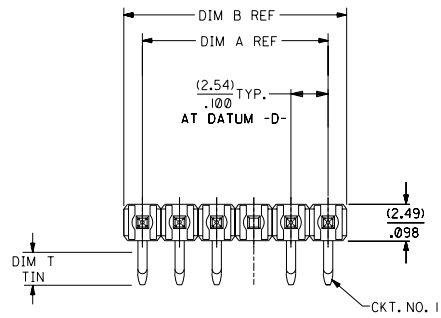
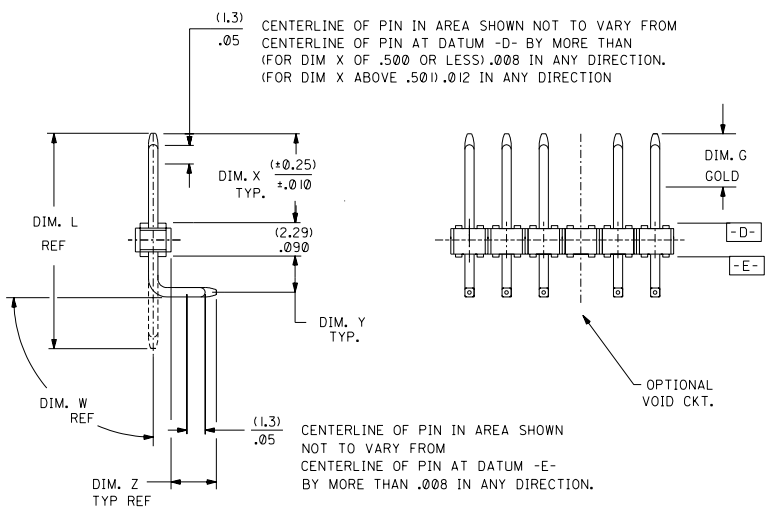


NO. OF CKTS.	DIM. A	DIM. B
2	.100 (2.54)	.200 (5.08)
3	.200 (5.08)	.300 (7.62)
4	.300 (7.62)	.400 (10.16)
5	.400 (10.16)	.500 (12.70)
6	.500 (12.70)	.600 (15.24)
7	.600 (15.24)	.700 (17.78)
8	.700 (17.78)	.800 (20.32)
9	.800 (20.32)	.900 (22.86)
10	.900 (22.86)	1.000 (25.40)
11	1.000 (25.40)	1.100 (27.94)
12	1.100 (27.94)	1.200 (30.48)
13	1.200 (30.48)	1.300 (33.02)
14	1.300 (33.02)	1.400 (35.56)
15	1.400 (35.56)	1.500 (38.10)
16	1.500 (38.10)	1.600 (40.64)
17	1.600 (40.64)	1.700 (43.18)
18	1.700 (43.18)	1.800 (45.72)
19	1.800 (45.72)	1.900 (48.26)
20	1.900 (48.26)	2.000 (50.80)
21	2.000 (50.80)	2.100 (53.34)
22	2.100 (53.34)	2.200 (55.88)
23	2.200 (55.88)	2.300 (58.42)
24	2.300 (58.42)	2.400 (60.96)
25	2.400 (60.96)	2.500 (63.50)
26	2.500 (63.50)	2.600 (66.04)
27	2.600 (66.04)	2.700 (68.58)
28	2.700 (68.58)	2.800 (71.12)
29	2.800 (71.12)	2.900 (73.66)
30	2.900 (73.66)	3.000 (76.20)
31	3.000 (76.20)	3.100 (78.74)
32	3.100 (78.74)	3.200 (81.28)
33	3.200 (81.28)	3.300 (83.82)
34	3.300 (83.82)	3.400 (86.36)
35	3.400 (86.36)	3.500 (88.90)
36	3.500 (88.90)	3.600 (91.44)

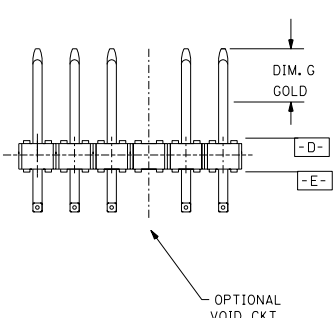
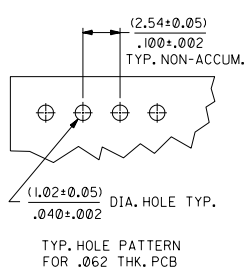


- NOTES:
1. MATERIAL: 30% GLASS FILLED NYLON COLOR: BLACK
 2. PIN PUSHOUT 3 LBS. MIN.
 3. SOLDERABILITY PER ES-152.
 4. PLATING: (159) PREPLATED BRIGHT TIN/LEAD (90/10) .000150 MIN
(567) SELECT GOLD .000015 MIN
SELECT TIN-LEAD .000100 MIN
OVER .000050 MIN NICKEL.
(569) SELECT GOLD .000030 MIN
SELECT TIN-LEAD .000100 MIN
OVER .000050 MIN NICKEL.
 5. INDIVIDUAL CIRCUIT SIZES ARE CUT FROM 36 CIRCUIT PARTS.
 6. PRODUCT SPECIFICATION: PS-10-07



(1.3) ± .05 CENTERLINE OF PIN IN AREA SHOWN NOT TO VARY FROM CENTERLINE OF PIN AT DATUM -D- BY MORE THAN (FOR DIM X OF .500 OR LESS) .008 IN ANY DIRECTION. (FOR DIM X ABOVE .500) .012 IN ANY DIRECTION.

(1.3) ± .05 CENTERLINE OF PIN IN AREA SHOWN NOT TO VARY FROM CENTERLINE OF PIN AT DATUM -E- BY MORE THAN .008 IN ANY DIRECTION.



MFG.	SH.	REV.	LTR.	REVISIONS
T8				ADD 1067/1100 UCP2003-2520 06/03/2003 ELHAG
T7				ADD 1032/1066 UCP2003-2151 04/14/2003 ELHAG
6	A2	T6		ADD 0963/1031 UCP2003-1747 02/13/2003 ELHAG
5	T6			
4	R	T5		ADD 0928/0968 UCP2003-1346 12/5/2002 SAMIEC
3	T2			
2	R	T4		REV 0899 UCP2003-0590 10/7/2002 SAMIEC
1	T8			

DIMENSIONS SHOWN (METRIC) INCH
UNLESS OTHERWISE SPECIFIED
TOLERANCES ANGULAR ± 1/2°

INCH	METRIC
3 PLACE ± .010	± 0.25
2 PLACE ± .014	± 0.36
1 PLACE ± .036	

DRAFT WHERE APPLICABLE MUST REMAIN WITHIN DIMENSIONS

ORG. BY: LJS DWG. BY: PATEL
APP'D: LENZ SCALE: 1:1

REVISIONS ONLY ON CAD SYSTEM

TITLE: WAFER ASSY., SINGLE ROW .100 Q BREAKAWAY 42377 SERIES DWG

MOLEX INCORPORATED SHEET NO. 1 OF 6 DATE 09/15/88

PART NO. 42377 FILE NAME S42377X1

SEE CHART SDA-42377

NO DRAWING CONTAINS INFORMATION THAT IS PROHIBITED BY MOLEX INC. AND SHOULD NOT BE USED WITHOUT WRITTEN PERMISSION.

SIZE: C C

13	12	11	10	9	8	7	6	42377		4	3	2	1
ENG. NO.	HEADER NO.	PIN NO.	DIM. L	DIM. X	DIM. Y	DIM. Z	DIM. W	GOLD LOC. DIM. *G*	TIN LOC. DIM. *T*	NO OF CKTS	VOID CKTS	PACKAGING PER PKX-....	KINK PINS
A-42377-0727 TO -0743	42312-0036	42663-AZA159 PHOS BRONZE	.550 (13.97)	.244 (6.20)	.070 (1.78)	.120 (3.05)	90°	N/A ()	OVERALL ()	20-36	4,5,6,7,8,9,13,14,15,16,17,	BULK 40873-0041	NO
A-42377-0744 TO -0778	42312-0036	42663-CJA159 PHOS BRONZE	.700 (17.78)	.390 (9.90)	.070 (1.78)	.124 (3.15)	90°	N/A ()	OVERALL ()	2-36		BULK 40873-0041	NO
A-42377-0779 TO -0813	42312-0036	42663-ANA159 PHOS BRONZE	.510 (12.95)	.134 (3.40)	.060 (1.52)	.200 (5.08)	90°	N/A ()	OVERALL ()	2-36		BULK 40873-0041	NO
A-42377-0814 TO -0828	42312-0036	42663-BCA159	.565 (14.35)	.244 (6.20)	.070 (1.78)	.135 (3.43)	90°	N/A ()	OVERALL ()	22-36	2,4,6,8,10,12,14,16,17,18,20,22	BULK 40873-0041	SMES-42003
A-42377-0829 TO -0863	42312-0036	42663-ABA159	.455 (11.56)	.126 (3.20)	.092 (2.33)	.126 (3.20)	90°	N/A ()	OVERALL ()	2-36	NONE	BULK 40873-0041	NO
A-42377-0864 TO 0898	42312-0036	42663-BXA159	.645 (16.38)	.324 (8.28)	.070 (1.78)	.135 (3.43)	90°	N/A ()	OVERALL ()	2-36		BULK 40873-0041	NO
A-42377-0899 TO 0927	42312-0036	42663-BXB567	.645 (16.38)	.324 (8.28)	.070 (1.78)	.135 (3.43)	90°	.140 (3.56)	.135 (3.43)	8-36	2,3,4,6,7,8	BULK 40873-0041	SMES-42003
A-42377-0928 TO 0962	42312-0036	42663-DHB567	.800 (20.32)	.317 (8.05)	.070 (1.78)	.290 (7.37)	90°	.180 (4.57)	.135 (3.43)	2-36		BULK 40873-0041	NO
A-42377-0963 TO 0997	42312-0036	42663-ABA159	.455 (11.56)	.140 (3.56)	.050 (1.27)	.145 (3.68)	90°	N/A ()	OVERALL ()	2-36	NONE	BULK 40873-0041	NO
A-42377-0998 TO 1031	42312-0036	42663-ABA159	.455 (11.56)	.140 (3.56)	.050 (1.27)	.145 (3.68)	90°	N/A ()	OVERALL ()	3-36	3	BULK 40873-0041	NO

CIRCUIT	ITEM NO	ITEM NO	ITEM NO	ITEM NO	ITEM NO	ITEM NO	ITEM NO	ITEM NO	ITEM NO	ITEM NO	ITEM NO
02		42377-0744	42377-0779		42377-0829	42377-0864		42377-0928	42377-0963		42377-0998
03		42377-0745	42377-0780		42377-0830	42377-0865		42377-0929	42377-0964		42377-0999
04		42377-0746	42377-0781		42377-0831	42377-0866		42377-0930	42377-0965		42377-1000
05		42377-0747	42377-0782		42377-0832	42377-0867		42377-0931	42377-0966		42377-1001
06		42377-0748	42377-0783		42377-0833	42377-0868		42377-0932	42377-0967		42377-1002
07		42377-0749	42377-0784		42377-0834	42377-0869		42377-0933	42377-0968		42377-1003
08		42377-0750	42377-0785		42377-0835	42377-0870	42377-0899	42377-0934	42377-0969		42377-1004
09		42377-0751	42377-0786		42377-0836	42377-0871	42377-0900	42377-0935	42377-0970		42377-1005
10		42377-0752	42377-0787		42377-0837	42377-0872	42377-0901	42377-0936	42377-0971		42377-1006
11		42377-0753	42377-0788		42377-0838	42377-0873	42377-0902	42377-0937	42377-0972		42377-1007
12		42377-0754	42377-0789		42377-0839	42377-0874	42377-0903	42377-0938	42377-0973		42377-1008
13		42377-0755	42377-0790		42377-0840	42377-0875	42377-0904	42377-0939	42377-0974		42377-1009
14		42377-0756	42377-0791		42377-0841	42377-0876	42377-0905	42377-0940	42377-0975		42377-1010
15		42377-0757	42377-0792		42377-0842	42377-0877	42377-0906	42377-0941	42377-0976		42377-1011
16		42377-0758	42377-0793		42377-0843	42377-0878	42377-0907	42377-0942	42377-0977		42377-1012
17		42377-0759	42377-0794		42377-0844	42377-0879	42377-0908	42377-0943	42377-0978		42377-1013
18		42377-0760	42377-0795		42377-0845	42377-0880	42377-0909	42377-0944	42377-0979		42377-1014
19		42377-0761	42377-0796		42377-0846	42377-0881	42377-0910	42377-0945	42377-0980		42377-1015
20	42377-0727	42377-0762	42377-0797		42377-0847	42377-0882	42377-0911	42377-0946	42377-0981		42377-1016
21	42377-0728	42377-0763	42377-0798		42377-0848	42377-0883	42377-0912	42377-0947	42377-0982		42377-1017
22	42377-0729	42377-0764	42377-0799	42377-0814	42377-0849	42377-0884	42377-0913	42377-0948	42377-0983		42377-1018
23	42377-0730	42377-0765	42377-0800	42377-0815	42377-0850	42377-0885	42377-0914	42377-0949	42377-0984		42377-1019
24	42377-0731	42377-0766	42377-0801	42377-0816	42377-0851	42377-0886	42377-0915	42377-0950	42377-0985		42377-1020
25	42377-0732	42377-0767	42377-0802	42377-0817	42377-0852	42377-0887	42377-0916	42377-0951	42377-0986		42377-1021
26	42377-0733	42377-0768	42377-0803	42377-0818	42377-0853	42377-0888	42377-0917	42377-0952	42377-0987		42377-1022
27	42377-0734	42377-0769	42377-0804	42377-0819	42377-0854	42377-0889	42377-0918	42377-0953	42377-0988		42377-1023
28	42377-0735	42377-0770	42377-0805	42377-0820	42377-0855	42377-0890	42377-0919	42377-0954	42377-0989		42377-1024
29	42377-0736	42377-0771	42377-0806	42377-0821	42377-0856	42377-0891	42377-0920	42377-0955	42377-0990		42377-1025
30	42377-0737	42377-0772	42377-0807	42377-0822	42377-0857	42377-0892	42377-0921	42377-0956	42377-0991		42377-1026
31	42377-0738	42377-0773	42377-0808	42377-0823	42377-0858	42377-0893	42377-0922	42377-0957	42377-0992		42377-1027
32	42377-0739	42377-0774	42377-0809	42377-0824	42377-0859	42377-0894	42377-0923	42377-0958	42377-0993		42377-1028
33	42377-0740	42377-0775	42377-0810	42377-0825	42377-0860	42377-0895	42377-0924	42377-0959	42377-0994		42377-1029
34	42377-0741	42377-0776	42377-0811	42377-0826	42377-0861	42377-0896	42377-0925	42377-0960	42377-0995		42377-1030
35	42377-0742	42377-0777	42377-0812	42377-0827	42377-0862	42377-0897	42377-0926	42377-0961	42377-0996		42377-1031
36	42377-0743	42377-0778	42377-0813	42377-0828	42377-0863	42377-0898	42377-0927	42377-0962	42377-0997		42377-1031

SEE SHT I	T2	SEE SHT I	DIMENSIONS SHOWN METRIC UNLESS OTHERWISE SPECIFIED	
SEE SHT I	S2	SEE SHT I	TOLERANCES ANGULAR ± 1/2°	
SEE SHT I	S1	SEE SHT I	INCH METRIC	
T6	SEE SHT I	S	± .010	---
T5	SEE SHT I	R3	± .014	± 0.25
T4	SEE SHT I	R2	---	± 0.36
T3	SEE SHT I	R1	DRAWING WHERE APPLICABLE MUST REMAIN WITHIN DIMENSIONS	
LTB	REVISIONS	LTB	REVISIONS	

TITLE: HEADER ASSY., RT. ANGLE
 .100 C BREAKAWAY
 42377 SERIES DWG
 MOLEX INCORPORATED
 1515/L/LL U.S.A. 60532
 SHEET NO. 5 DATE 1/17/97
 DRAWING NO. SDA-42377
 FILE NAME: S42377X.DWG
 NOT DRAWING CONTAINS INFORMATION THAT IS PROPRIETARY TO MOLEX INC. AND SHOULD NOT BE USED WITHOUT WRITTEN PERMISSION.

13	12	11	10	9	8	7	6	5	4	3	2	1
----	----	----	----	---	---	---	---	---	---	---	---	---