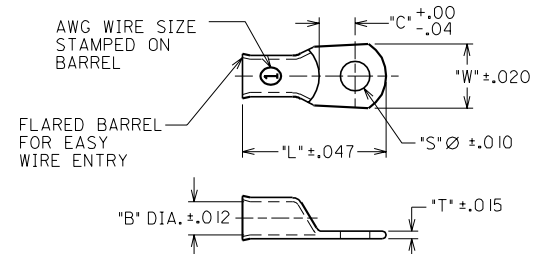


	10	9	8	7	6	5	4	3	2	1		
	TIN PLATED MATERIAL NO.	TIN PLATED ALTERNATE NO.	UNPLATED MATERIAL NO.	UNPLATED ALTERNATE NO.	AWG WIRE RANGE	STUD SIZE	"S"	"L"	"W"	"C"	"B"	"T"
F	1922 I0223	BCL-810-PL	1922 I0408	BCL-810	8	10	.214	1.200	.445	.375	.185	.070
	1922 I0224	BCL-814-PL	1922 I0409	BCL-814	8	1/4	.278	1.200	.445	.375	.185	.070
	1922 I0225	BCL-8516-PL	1922 I0411	BCL-8516	8	5/16	.340	1.200	.445	.375	.185	.070
	1922 I0226	BCL-838-PL	1922 I0410	BCL-838	8	3/8	.400	1.305	.605	.375	.185	.070
	1922 I0414	BCL-812-PL	1922 I0415	BCL-812	8	1/2	.520	1.470	.765	.410	.185	.070
	1922 I0424	BCL-610-PL	1922 I0425	BCL-610	6	10	.214	1.270	.445	.350	.230	.075
	1922 I0227	BCL-614-PL	1922 I0406	BCL-614	6	1/4	.278	1.270	.630	.390	.230	.080
	1922 I0228	BCL-6516-PL	1922 I0407	BCL-6516	6	5/16	.340	1.410	.630	.390	.230	.080
	1922 I0229	BCL-638-PL	1922 I0384	BCL-638	6	3/8	.400	1.410	.630	.390	.230	.080
	1922 I0416	BCL-612-PL	1922 I0417	BCL-612	6	1/2	.520	1.560	.765	.410	.230	.080
E	1922 I0230	BCL-414-PL	1922 I0404	BCL-414	4	1/4	.278	1.530	.525	.410	.283	.080
	1922 I0231	BCL-4516-PL	1922 I0405	BCL-4516	4	5/16	.340	1.530	.525	.410	.283	.080
	1922 I0232	BCL-438-PL	1922 I0383	BCL-438	4	3/8	.400	1.530	.525	.410	.283	.080
	1922 I0418	BCL-214-PL	1922 I0419	BCL-214	2	1/4	.278	1.620	.615	.410	.330	.095
	1922 I0233	BCL-2516-PL	1922 I0400	BCL-2516	2	5/16	.340	1.620	.615	.410	.330	.095
	1922 I0235	BCL-238-PL	1922 I0380	BCL-238	2	3/8	.400	1.620	.615	.410	.330	.095
	1922 I0236	BCL-212-PL	1922 I0399	BCL-212	2	1/2	.520	1.750	.765	.468	.330	.095
	1922 I0420	BCL-114-PL	1922 I0421	BCL-114	1	1/4	.278	1.720	.655	.410	.350	.100
	1922 I0237	BCL-1516-PL	1922 I0396	BCL-1516	1	5/16	.340	1.720	.655	.410	.350	.100
D	1922 I0238	BCL-138-PL	1922 I0378	BCL-138	1	3/8	.400	1.720	.655	.410	.350	.100
	1922 I0239	BCL-112-PL	1922 I0395	BCL-112	1	1/2	.520	1.830	.765	.468	.350	.100
	1922 I0422	BCL-1014-PL	1922 I0423	BCL-1014	1/0	1/4	.278	1.830	.725	.410	.400	.110
	1922 I0240	BCL-10516-PL	1922 I0394	BCL-10516	1/0	5/16	.340	1.830	.725	.410	.400	.110
	1922 I0241	BCL-1038-PL	1922 I0377	BCL-1038	1/0	3/8	.400	1.830	.725	.410	.400	.110
	1922 I0242	BCL-1012-PL	1922 I0393	BCL-1012	1/0	1/2	.520	1.830	.725	.410	.400	.110
	1922 I0234	BCL-2014-PL	1922 I0249	BCL-2014	2/0	1/4	.340	2.062	.815	.500	.454	.110
	1922 I0243	BCL-20516-PL	1922 I0398	BCL-20516	2/0	5/16	.340	2.062	.815	.500	.454	.110
	1922 I0244	BCL-2038-PL	1922 I0379	BCL-2038	2/0	3/8	.400	2.062	.815	.500	.454	.110
	1922 I0245	BCL-2012-PL	1922 I0397	BCL-2012	2/0	1/2	.520	2.062	.815	.500	.454	.110
C	1922 I0246	BCL-30516-PL	1922 I0402	BCL-30516	3/0	5/16	.340	2.160	.906	.500	.509	.115
	1922 I0247	BCL-3038-PL	1922 I0381	BCL-3038	3/0	3/8	.400	2.160	.906	.500	.509	.115
	1922 I0248	BCL-3012-PL	1922 I0401	BCL-3012	3/0	1/2	.520	2.160	.906	.500	.509	.115
	1922 I0412	BCL-40516-PL	1922 I0413	BCL-40516	4/0	5/16	.340	2.350	.985	.530	.557	.135
	1922 I0250	BCL-4038-PL	1922 I0382	BCL-4038	4/0	3/8	.400	2.350	.985	.530	.557	.135
	1922 I0251	BCL-4012-PL	1922 I0403	BCL-4012	4/0	1/2	.520	2.350	.985	.530	.557	.135

E	ADDED 1922 I0234 AND 1922 I0249 ETC2000-0026 9/2
D	CHANGE DIMENSIONS ON THREE PARTS ET80563 12/17 JH
C	ADD DIMENSIONS FOR BCL-610-PL ECN60597 10/31 JH
B	DCN-1201 10/19/94 EMF
A	LTR. REVISIONS

MATERIAL: COPPER
PLATING: TIN

NOTES:
1. FOR INSPECTION SIGHT HOLE, PLEASE CONSULT FACTORY.
2. OTHER STUD SIZES MAY BE AVAILABLE, PLEASE CONSULT FACTORY.



CUSTOMER DRAWING

DIMENSIONS SHOWN (METRIC) INCH UNLESS OTHERWISE SPECIFIED TOLERANCES: ANGULAR ± 1/2°		REVISE ONLY ON CAD SYSTEM													
<table border="1"> <tr><th></th><th>INCH</th><th>METRIC</th></tr> <tr><td>3 PLACE</td><td>± .005</td><td>± ---</td></tr> <tr><td>2 PLACE</td><td>± .01</td><td>± 0.13</td></tr> <tr><td>1 PLACE</td><td>± ---</td><td>± 0.25</td></tr> </table>			INCH	METRIC	3 PLACE	± .005	± ---	2 PLACE	± .01	± 0.13	1 PLACE	± ---	± 0.25	TITLE EYELET STYLE COPPER TERMINALS LUGS	
	INCH	METRIC													
3 PLACE	± .005	± ---													
2 PLACE	± .01	± 0.13													
1 PLACE	± ---	± 0.25													
DRAWING WHERE APPLICABLE MUST REMAIN WITHIN DIMENSIONS		SHEET NO. DATE 94/02/14													
PART NO. SEE CHART		DRAWG. NO. SD-19221-001													
DRWG. BY: JM	CHK'D. BY: RWD	FILE NAME: 19221001	THIS DRAWING CONTAINS INFORMATION THAT IS PROPRIETARY TO MLEX-ETC INC. AND SHOULD NOT BE USED WITHOUT WRITTEN PERMISSION.												
APP'D. BY: RWD	SCALE: NO:NE	DTY.:	SIZE: B												