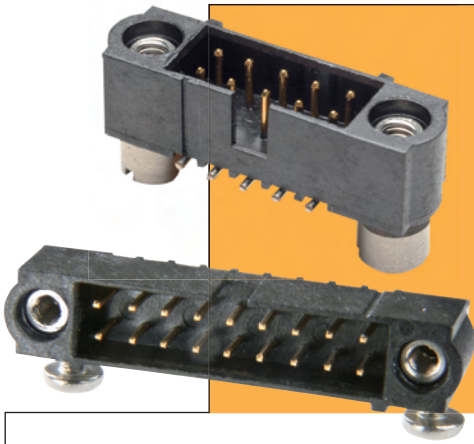


# Datamate Connectors

## Male Surface Mount with Board Mount



- ❖ 3.5mm jackscrew suitable for board thickness up to 1.6mm.
- ❖ 5mm jackscrew suitable for board thickness up to 3.2mm.
- ❖ Mates with female connectors shown on pages 26, 28-30 and 32-33.

VERTICAL	HORIZONTAL								
<p>Recommended PC Board Pattern</p>	<p>Recommended PC Board Pattern</p>								
<table border="1"> <thead> <tr> <th colspan="2" style="background-color: #f4a460;">CALCULATION</th> </tr> </thead> <tbody> <tr> <td style="background-color: #f4a460;">A</td> <td>B + 12</td> </tr> <tr> <td style="background-color: #f4a460;">B</td> <td>Total No. of contacts - 2</td> </tr> <tr> <td style="background-color: #f4a460;">C</td> <td>B + 7</td> </tr> </tbody> </table>		CALCULATION		A	B + 12	B	Total No. of contacts - 2	C	B + 7
CALCULATION									
A	B + 12								
B	Total No. of contacts - 2								
C	B + 7								

### HOW TO ORDER

**M80 - 5 X X XX XX P**

SERIES CODE	
1	Vertical
4	Horizontal
2	3.5mm Jackscrew
3	5mm Jackscrew

TOTAL NO. OF CONTACTS	
04 to 50	

Even numbers only

PICK AND PLACE CAP	
BLANK	No cap
P	Pick and place cap (M80-51X)

FINISH		
05	Gold	
22	Gold + Tin/Lead	
42	Gold + Tin	

[www.harwin.com](http://www.harwin.com)

All dimensions in mm.



# HARWIN