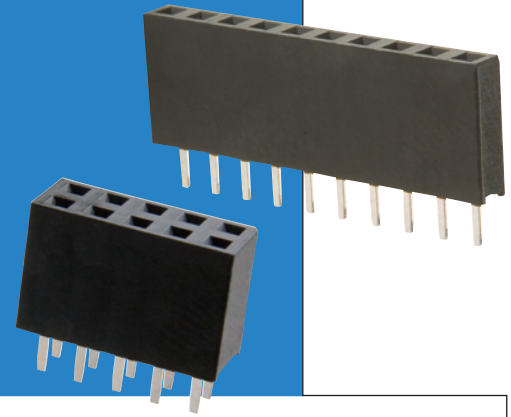


M20 Connectors

Female Vertical PC Tail

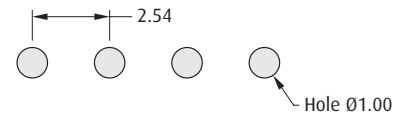
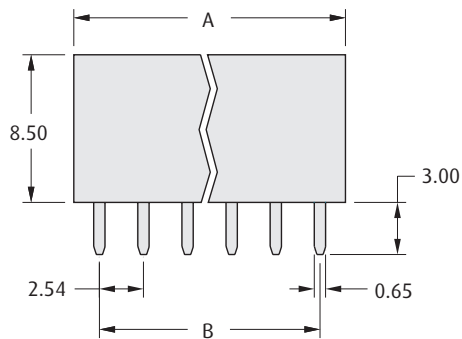
A comprehensive range of 2.54mm pitch connectors for board-to-board and cable-to-board applications.

- ❖ Twin-leaf phosphor bronze contacts.
- ❖ Suitable for use with male connectors on pages 127 to 134.



2.54mm (.100") PITCH

SINGLE ROW

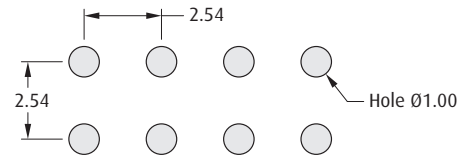
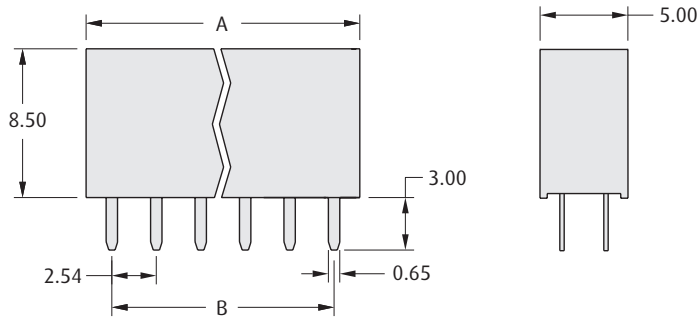


Recommended PC Board Pattern

CALCULATION

A	$(2.54 \times \text{No. of ways per row}) + 0.4$
B	$2.54 \times (\text{No. of ways per row} - 1)$

DOUBLE ROW



Recommended PC Board Pattern

HOW TO ORDER

M20 - 78 X XX XX

SERIES CODE

NO. OF ROWS

2	Single Row
3	Double Row

FINISH

42	Gold + Tin	
46	Tin	

NO. OF WAYS PER ROW

02 to 40

All dimensions in mm.

www.harwin.com

