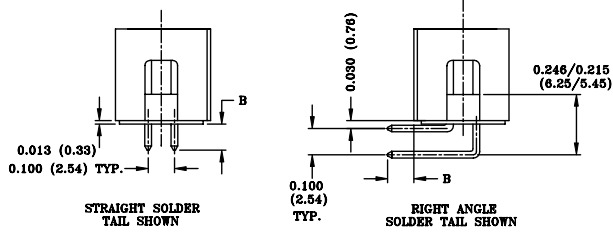


This document is the property of Amphenol Corporation and is prepared by the design, construction and production departments of Amphenol Corporation. It is to be used for the manufacture of Amphenol Corporation products without the prior consent of Amphenol Corporation. No right is granted to disclose or to use any information in this document.

REVISIONS				
SYM	ZONE	DESCRIPTION	DATE	APPROVED
A	BCN#82999	RELEASE TO CUSTOMER AND SUPERSEDE THE OLD DWG CR21-XXXX-XXX	11/24/94	IP
B	BCN#821104	ZONE DS, ADD DIM 6.28-5.45 PER CUSTOMER REQUEST	12/06/95	NELSON

SIZE	A±.010 (.25)	D±.010 (.25)
10	0.790 (20.07)	0.700 (17.78)
14	0.990 (25.15)	0.900 (22.86)
16	1.090 (27.69)	1.000 (25.40)
20	1.290 (32.77)	1.200 (30.48)
26	1.590 (40.39)	1.500 (38.10)
30	1.790 (45.47)	1.700 (43.18)
34	1.990 (50.55)	1.900 (48.28)
36	2.090 (53.09)	2.000 (50.80)
40	2.290 (58.17)	2.200 (55.88)
50	2.790 (70.87)	2.700 (68.58)
60	3.290 (83.57)	3.200 (81.28)
64	3.490 (88.65)	3.400 (86.36)



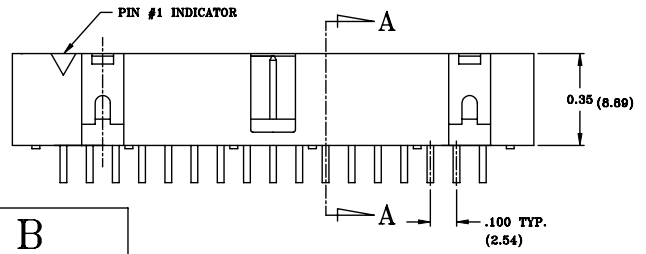
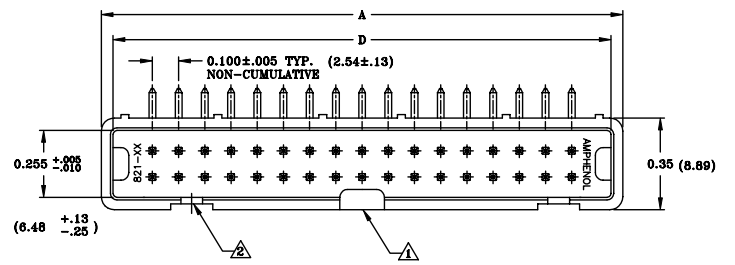
OPERATING CHARACTERISTICS

- 1> CURRENT CAPACITY: 1 Amp (DC) PER CONTACT.
- 2> VOLTAGE RATING (SEA LEVEL): 1500 VAC RMS.
- 3> OPERATING TEMPERATURE: -55°C TO +105°C.
- 4> BODY CONTACT RETENTION: 7 LBS. (IN BOTH DIRECTIONS)
- 5> LOW LEVEL CONTACT RESISTANCE: 50 MILLIOHMS (MAX.)
- 6> INSULATION RESISTANCE: 5000 MEGOHMS (MIN.)
- 7> DIELECTRIC WITHSTANDING VOLTAGE: 1500 AC RMS (AT SEA LEVEL)

PART NUMBER SYSTEM

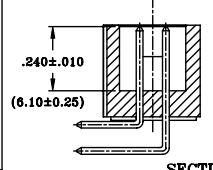
821 - A X XX P - XX X 0 0 X

- COLOR**
0 - GREY
2 - BLACK
- PLATING**
AF: NICKEL UNDERPLATE
15 MICROINCHES GOLD ON POSTS; TIN/LEAD ON TAILS.
AM: NICKEL UNDERPLATE
30 MICROINCHES GOLD ON POSTS; TIN/LEAD ON TAILS.
AA: NICKEL UNDERPLATE
GOLD FLASH ON POST; TIN/LEAD ON TAIL
- OPTION**
NIL - STD
S - CENTER POLARIZING SLOT PRESENT (THIS OPTION IS APPLIED FOR 10 WAYS ONLY)
- CONTACT CHARACTERISTICS**
A: SHORT, STRAIGHT SOLDER TAIL
B: LONG, STRAIGHT SOLDER TAIL
C: SHORT, RIGHT ANGLE SOLDER TAIL
D: LONG, RIGHT ANGLE SOLDER TAIL
E: STRAIGHT, WIRE WRAP
F: RIGHT ANGLE, WIRE WRAP
- SIZE (SEE CHART)**
- STD TYPE WITHOUT LATCH**



- NOTES: UNLESS OTHERWISE SPECIFIED**
1. CENTER POLARIZING SLOT ABSENT ON SIZE 10, IF THE SLOT IS REQUIRED IN 10 WAYS, A "S" IS REQUIRED TO BE ADDED AT THE END OF THE P/N.
 2. POLARIZING KEY SLOT ABSENT IN THIS AREA ON SIZES 10 AND 14.
 3. ALL DIMENSIONS ARE IN INCHES.
 4. THIS HEADER MATES WITH IDC SOCKET (AMPHENOL 812 SERIES SOCKET)
 5. RECOMMENDED PRINTED CIRCUIT BOARD LAYOUT:
SPACING: 0.100 ± 0.003 (2.54±.08)
DIA. OF HOLES: 0.040 ± 0.003 (1.02±.08)
 6. MATERIALS:
HOUSING: GLASS REINFORCED POLYESTER, UL94V-0, COLOR-GRAY OR BLACK.
CONTACTS: PHOSPHOR BRONZE ALLOY.
FINISH: GOLD THICKNESS PLATED ON THE MATING LENGTH REFER TO THE PART NUMBER SYSTEM AND 100-200u" TIN/LEAD PLATED ON THE TAIL WITH 50-100u" NICKEL UNDERPLATED ALLOVER.
 7. MAX. CONTACT ROTATION ALLOWED 3°
 8. DIMENSIONS IN BRACKET ARE IN MM.

CONTACT CHARACTERISTICS		B	
STR.	R/A		
E	F	.610±.015	(15.49±.38)
B	D	.160±.010	(4.06±.25)
A	C	.100±.010	(2.54±.25)



CUSTOMER DRAWING

UNLESS OTHERWISE SPECIFIED TOLERANCES		APPROVAL	DATE
X +/-	.015 U.S. / .015 METRIC	DRAWN	NELSON 12/06/95
XX +/-	.010 U.S. / .010 METRIC	CHECKED	NELSON 12/06/95
XXX +/-	.006 U.S. / .006 METRIC	CHECKED	
FRACTIONS +/-		DRAWING FILE:	
ANGLES +/-	2.5°	REMOVE SHARP EDGES	
FOR MATERIALS AND FINISHES SEE NOTES		ANGLE OF PROJECTION	
DIMENSIONS		U.S. INCHES	
U.S. INCHES		METRIC (MM)	

Amphenol
Amphenol East Asia Limited
Manufacturing Operation

TITLE
821 BOX HEADER

SIZE DRAWING NO. **REV.**
A3 C821-AXXP-XXX00X B

SCALE NONE **SHEET** 1 OF 1