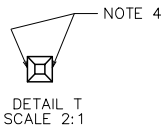
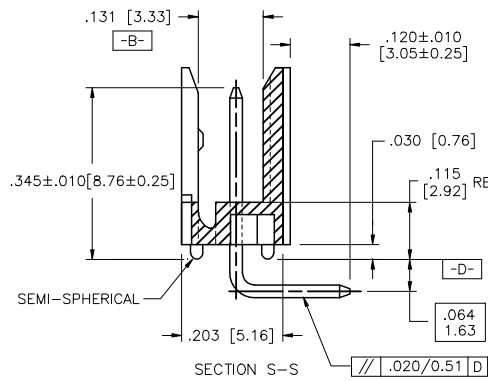
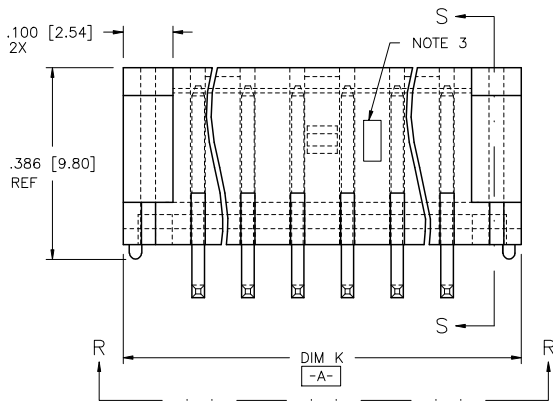
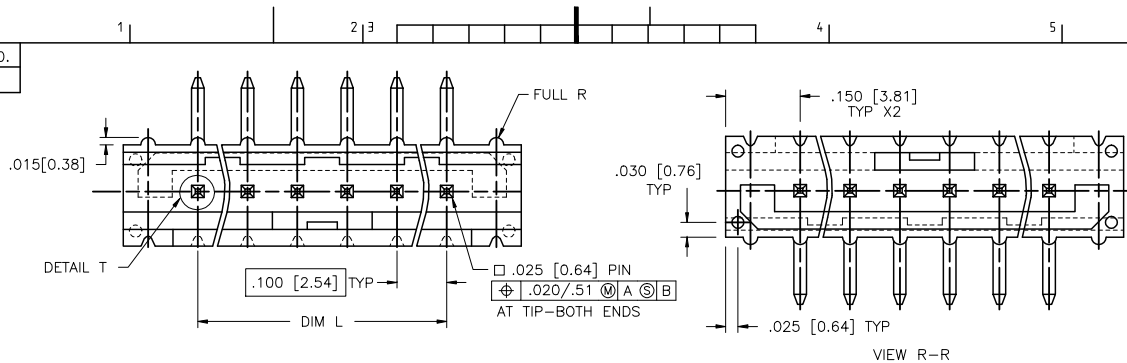


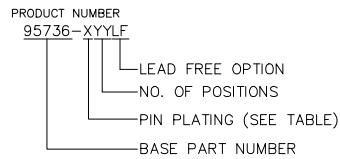
PRODUCT NO.  
SEE TABLE



mal't. code		surface	tolerance	projection	product family
		ISO 1902	ISO 406 ISO 1001	ISO 1001	HEADER
title		CLINCHER™ LATCH HEADER RIGHT ANGLE			
title		CLINCHER™ LATCH HEADER RIGHT ANGLE			
dwg no		95736		sheet 1 of 2	size A3
type		Product Customer Drawing			
lfr	ecn no	dr	date	angles	linear
B	V60842	EPK	6/3/96	linear	linear
C	C71289	HTB	9/22/97	linear	linear
D	M05-0109	MHT	7/15/05	0'±2'	linear
E	M06-0052	MHT	1/30/06	dr	T.BREWBAKER
F	M06-0233	AGS	6/13/06	engr	T. HANNA
G	M06-0469	MHT	11/28/06	chr	T. HANNA
H	M09-0059	MHT	4/16/09	appd	T. HANNA
sheet	revision	H	H		
index	sheet	1	2		

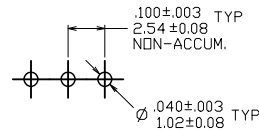
PRODUCT NO. NOTE 5	NO. OF POSITIONS	DIM K		DIM L		NOTES
		ENGLISH	METRIC	ENGLISH	METRIC	
95736-X02	1 X 2	0.400	10.16	0.100	2.54	-
95736-X03	1 X 3	0.500	12.70	0.200	5.08	-
95736-X04	1 X 4	0.600	15.24	0.300	7.62	-
95736-X05	1 X 5	0.700	17.78	0.400	10.16	-
95736-X06	1 X 6	0.800	20.32	0.500	12.70	-
95736-X07	1 X 7	0.900	22.86	0.600	15.24	-
95736-X08	1 X 8	1.000	25.40	0.700	17.78	-
95736-X09	1 X 9	1.100	27.94	0.800	20.32	-
95736-X10	1 X 10	1.200	30.48	0.900	22.86	-
95736-X11	1 X 11	1.300	33.02	1.000	25.40	-
95736-X12	1 X 12	1.400	35.56	1.100	27.94	-
95736-X13	1 X 13	1.500	38.10	1.200	30.48	-
95736-X14	1 X 14	1.600	40.64	1.300	33.02	-
95736-X15	1 X 15	1.700	43.18	1.400	35.56	-
95736-X16	1 X 16	1.800	45.72	1.500	38.10	-

DASH NO	OVERPLATING	UNDERPLATING
-1YY	30u"/.76u MIN (SEE NOTE 8)	50u"/1.27u MIN Ni
-1YYLF	30u"/.76u MIN (SEE NOTE 8)	50u"/1.27u MIN Ni
-4YY	100u"/2.54u MIN Sn (NOTE 9)	50u"/1.27u MIN Ni
-4YYLF		50u"/1.27u MIN Ni



NOTE

- MOLDING MATERIAL: HIGH TEMPERATURE PLASTIC  
FLAME RETARDENT PER UL-94V-0. COLOR: NATURAL
- PIN MATERIAL: 3/4 HD PHOS. BRONZE
- LOGO TO BE LOCATED APPROX. AS SHOWN.
- TWO NON-CRITICAL SIDES OF PIN TIP NOT PLATED,  
BOTH ENDS.
- FOR LEAD FREE OPTION ADD "LF" IN THE END OF  
THE EXISTING PART NUMBERS.
- IF "LF" P/N THE PRODUCT MEETS EUROPEAN UNION DIRECTIVES  
AND OTHER COUNTRY REGULATION AS DESCRIBED IN GS-22-008.
- THE HOUSING WILL WITHSTAND EXPOSURE TO 260°C PEAK  
TEMPERATURE FOR 20-30 SECONDS IN A CONVECTION,  
INFRA-RED OR VAPOR PHASE REFLOW OVEN. SEE APPLICATION  
NOTES/PROCEDURES IF THEY ARE AVAILABLE  
OR THE HOUSING WILL WITHSTAND EXPOSURE TO 260°C PEAK  
TEMPERATURE FOR 15 SECONDS IN A WAVE SOLDER APPLICATION  
WITH A 1.5mm MINIMUM THICK CIRCUIT BOARD. SEE APPLICATION  
NOTES/PROCEDURES IF THEY ARE AVAILABLE.
- PLATING OPTIONS:  
MAY BE EITHER GOLD OR GXT PLATED AT THE MANUFACTURER'S CHOICE
- "THIS PRODUCT HAS 100% TIN PLATING IN THE INTERFACE AND  
HAS NOT BEEN TESTED FOR WHISKER GROWTH IN ALL  
INTERCONNECT ENVIRONMENTS."



SCALE 3/1  
RECOMMENDED HOLE PATTERN

mal't. code		surface	tolerance	projection	product family
		ISO 1902	ISO 406	1st angle	HEADER
		tolerances unless otherwise specified			title
lfr	ecn no	dr	date	INCH/MM	CLINCHER™ LATCH HEADER RIGHT ANGLE
H				scale 4:1	dwg no 95736 sheet 2 of 2 size A3
					type Product Customer Drawing
sheet	revision				
index	sheet				