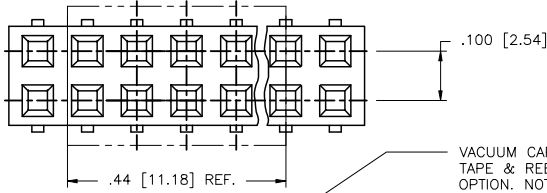
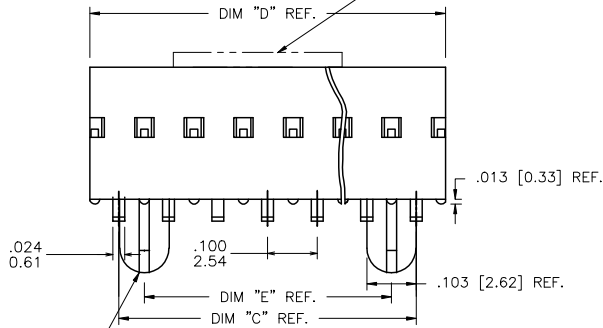


PRODUCT NO.
SEE TABLE

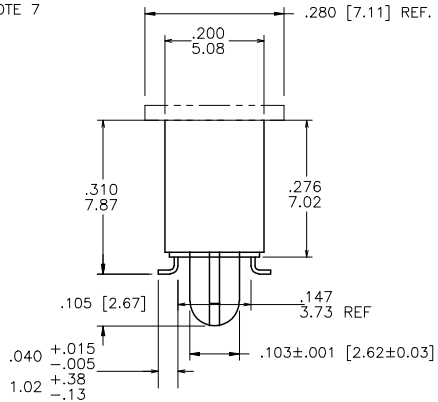
68622 - XXX 2 LF
 LEAD FREE OPTION
 PACKAGING OPTION NOTES. OMIT IF NOT REQUIRED.
 HOUSING WITH SMALL ROUND PEGS. OMIT IF NOT REQUIRED.
 SEE CONFIGURATION PAGE 3
 NO. OF POSITIONS PER ROW
 PLATING CODE
 BASE PART NUMBER



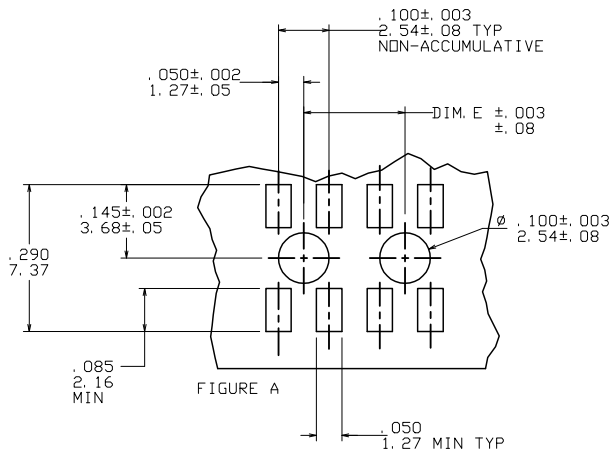
VACUUM CAP FOR TAPE & REEL PACKAGING OPTION. NOTE 7



SEE PEG OPTION



mal't. code		surface		tolerance		projection		product family	
SEE NOTES 1, 3 & 7		ISO 1902		ISO 406 ISO 1001		INCH/MM		DUBOX	
lfr	ecr no	dr	date	tolerances unless otherwise specified		linear		title	
P	V03-0309	HTB	4/28/03	.001/.01/.010.3		1:1		SMT DOUBLE ROW LATCHED VCC ASSEMBLY	
R	V05-0463	DPU	06/28/05	.001±.005/.001±.013		scale 1:1		dwg no	
S	M06-0237	MN	06/19/06	.001±.002/.001±.005		scale 1:1		sheet 1 of 5 size	
T	M06-0433	AGS	10/31/06	dr		J. SHREINER		68622 A3	
U	M07-0203	AGS	05/02/07	engr		M. HAHN		type	
V	M09-0032	MHT	02/25/09	chr		M. HAHN		Product Customer Drawing	
W	M09-0057	MHT	3/25/09	appd		M. HAHN			
sheet	revision	W	W	W	W	W	W		
index	sheet	1	2	3	4	5			



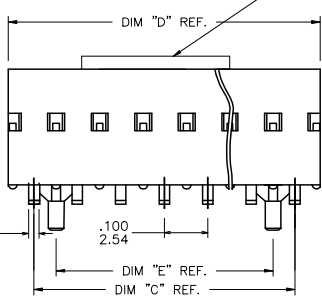
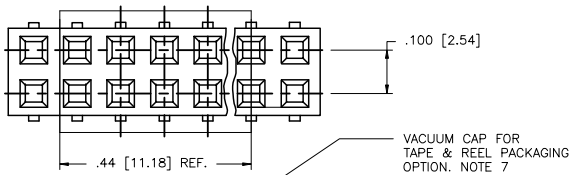
STANDARD PCB RECOMMENDED

6. TAPE AND REEL PACKAGING FOR 24mm WIDE AND BELOW HAVE PILOT HOLES ON ONE SIDE OF TAPE ONLY. SIZES ABOVE 24mm HAVE PILOT HOLES ON BOTH SIDES OF TAPE.
- ⑦ VACUUM PICK-UP CAP MATERIAL: L.C.P. FLAME RETARDANT PER UL 94V-0.
COLOR: BLACK
8. ADD SUFFIX "P" TO PART DASH NUMBER FOR TAPE AND REEL PACKAGING.
EXAMPLE: 68622-XXXP
9. MAXIMUM LENGTH OF CONNECTOR FOR TAPE AND REEL PACKAGING IS 2.50 INCHES LONG/63.5 MM.
10. TAPE & REEL PACKAGING 72mm WIDE TAPE WITH 16mm POCKET PITCH.
- ⑪ TAPE & REEL PACKAGING 88mm WIDE TAPE WITH 12mm POCKET PITCH.
12. FCI, FCI FINAL PART NUMBER AND DATE CODE TO BE MARKED ON TUBE LABEL.
- ⑬ ADD LF SUFFIX AT THE END OF PART NUMBER FOR LEAD FREE OPTION.
14. THIS PRODUCT MEETS EUROPEAN UNION DIRECTIVES AND OTHER COUNTRY REGULATION AS DESCRIBED IN GS-22-008.
- ⑮ PLATING OPTIONS:
MAY BE EITHER GOLD OR GXT PLATED AT MANUFACTURER'S OPTION.

- NOTES:
- ① MATERIAL TERMINAL: PHOSPHOR BRONZE, EXTRA HARD.
 2. RECOMMENDED APPLICATION DATA:
 - A. RECOMMENDED SOLDER PAD PATTERN IS SHOWN IN FIGURE A.
 - B. ALL MATING PINS TO BE .025/.64 SQUARE ON TRUE CENTER OF GIVEN TERMINAL SPACING WITHIN .015/.38 DIA.
 - C. SUGGESTED MATING PIN LENGTH .210 ±.020/5.33 ±.51.
 - ③ MATERIAL HOUSING: G.F. POLYESTER, COLOR: BLACK FLAME RETARDANT PER UL 94 -V0
THIS PART WILL WITHSTAND EXPOSURES TO 260°C PEAK TEMPERATURE FOR 20 SECONDS IN WAVE SOLDER, INFRA-RED OR VAPOR PHASE SOLDER PROCESS.
 4. PRESTAMPED POST PLATED TERMINALS.
 5. TAPE AND REEL PACKAGING PER GES-14-334.

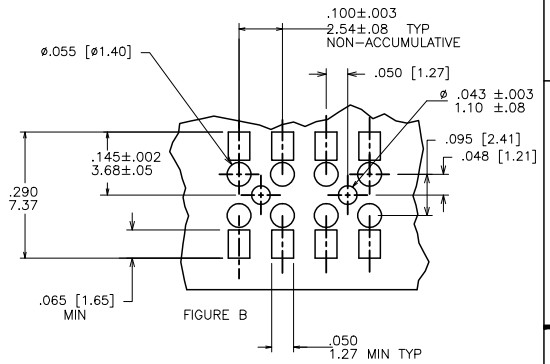
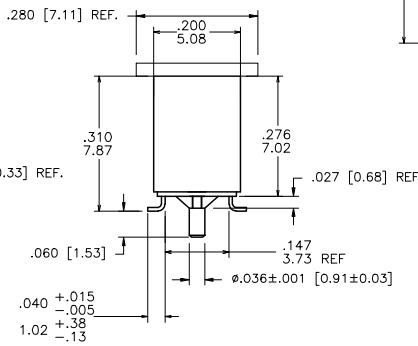
mat'l code SEE NOTES 1, 3 & 7		surface ISO 1902	tolerance ISO 146 ISO 1001	projection ISO 1001	product family DUBOX
lfr	ecn no	dr	date	tolerances unless otherwise specified	title SMT DOUBLE ROW LATCHED VCC ASSEMBLY
w				angles linear XX±.01/XX±.03 XXX±.005/XXX±.013 XXXX±.0020/XXXX±.0051	INCH/MM scale 1:1
		dr	J. SHREINER 12/18/90		dwg no 68622
		eng	M. HAHN 12/18/90		sheet 2 of 5 size A3
		chr	M. HAHN 12/18/90		type Product Customer Drawing
		appd	M. HAHN 12/18/90		
sheet index	revision sheet				

PRODUCT NO NOTE 13	PLATING CONTACT AREA	PLATING SOLDER TAIL	MATERIAL REF.	
68622-2XX	15u"/.38u Au MIN OVER 50u"/1.27u Ni MIN SEE NOTE 15	100u"/160u" Sn 2.54u/4.06u	NOTE 3 & 4	NOTE 13
68622-3XX	30u"/.76u Au MIN OVER 50u"/1.27u Ni MIN SEE NOTE 15	100u"/160u" Sn 2.54u/4.06u	NOTE 3 & 4	NOTE 13
68622-6XX	30u"/.76u Au MIN OVER 50u"/1.27u Ni MIN SEE NOTE 15	100u"/160u" Sn 2.54u/4.06u	NOTE 3 & 4	NOTE 13



SMALL ROUND PEGS

VACUUM CAP FOR TAPE & REEL PACKAGING OPTION. NOTE 7



SMALL ROUND PEGS
PCB RECOMMENDED

mat'l code	surface	tolerance	projection	product family
SEE NOTES 1, 3 & 7	iso 1902	SD 406 ISO 1101		DUBOX
ltr	ec'n no	dr	date	title
				SMT DOUBLE ROW LATCHED VCC ASSEMBLY
w	angles	linear		INCH/MM
		0° ± 2°		scale 1:1
dr	enr	chr	appd	dwg no
J. SHREINER	M. HAHN	M. HAHN	M. HAHN	sheet 3 of 5 size
12/18/90	12/18/90	12/18/90	12/18/90	68622
				A3
sheet	revision			type
index	sheet			Product Customer Drawing

PRODUCT NO. NOTE 13	NO. OF POSITION	C DIM	D DIM	E DIM	TAPE & REEL PACKAGING	LF OPTIONS
68622-Y04	2 X 4	. 300/7. 62	. 417/10. 59	. 200/ 5. 08	NO	NOTE 13
-Y05	2 X 5	. 400/10. 16	. 517/13. 13	. 300/ 7. 62	NO	
-Y06	2 X 6	. 500/12. 70	. 617/15. 67	. 400/10. 16	NO	
-Y07	2 X 7	. 600/15. 24	. 717/18. 21	. 500/12. 70	NO	
-Y08	2 X 8	. 700/17. 78	. 817/20. 75	. 600/15. 24	NO	
-Y09	2 X 9	. 800/20. 32	. 917/23. 29	. 700/17. 78	NO	
-Y10	2 X 10	. 900/22. 86	1. 017/25. 83	. 800/20. 32	NO	
-Y11	2 X 11	1. 000/25. 40	1. 117/28. 37	. 900/22. 86	NO	
-Y12	2 X 12	1. 100/27. 94	1. 217/30. 91	1. 000/25. 40	NO	
-Y13	2 X 13	1. 200/30. 48	1. 317/33. 45	1. 100/27. 94	NO	
-Y14	2 X 14	1. 300/33. 02	1. 417/35. 99	1. 200/30. 48	NO	
-Y15	2 X 15	1. 400/35. 56	1. 517/38. 53	1. 300/33. 02	NO	
-Y16	2 X 16	1. 500/38. 10	1. 617/41. 07	1. 400/35. 56	NO	
-Y17	2 X 17	1. 600/40. 64	1. 717/43. 61	1. 500/38. 10	NO	
-Y18	2 X 18	1. 700/43. 18	1. 817/46. 15	1. 600/40. 64	NO	
-Y19	2 X 19	1. 800/45. 72	1. 917/48. 69	1. 700/43. 18	NO	
-Y20	2 X 20	1. 900/48. 26	2. 017/51. 23	1. 800/45. 72	NO	
-Y21	2 X 21	2. 000/50. 80	2. 117/53. 77	1. 900/48. 26	NO	
-Y22	2 X 22	2. 100/53. 34	2. 217/56. 31	2. 000/50. 80	NO	
-Y23	2 X 23	2. 200/55. 88	2. 317/58. 85	2. 100/53. 34	NO	
-Y24	2 X 24	2. 300/58. 42	2. 417/61. 39	2. 200/55. 88	NO	
68622-Y25	2 X 25	2. 400/60. 96	2. 517/63. 93	2. 300/58. 42	NO	

mal't. code SEE NOTES 1,3 & 7		surface ISO 1302	tolerance ISO 146 ISO 1001	projection 1st angle	product family DUBOX
lfr	ecr no	dr	date	INCH/MM	title SMT DOUBLE ROW LATCHED VCC ASSEMBLY
w				scale 1:1	dwg no 68622
					sheet 4 of 5 size A3
					type Product Customer Drawing
sheet index	revision sheet				

PRODUCT NO. NOTE 13	NO. OF POSITION	C DIM	D DIM	E DIM	TAPE & REEL PACKAGING	LF OPTIONS
68622-Y26	2 X 26	2.500/63.50	2.617/66.47	2.400/60.96	NO	
-Y27	2 X 27	2.600/66.04	2.717/69.01	2.500/63.50	NO	
-Y28	2 X 28	2.700/68.58	2.817/71.55	2.600/66.04	NO	
-Y29	2 X 29	2.800/71.12	2.917/74.09	2.700/68.58	NO	
-Y30	2 X 30	2.900/73.66	3.017/76.63	2.800/71.12	NO	
-Y31	2 X 31	3.000/76.20	3.117/79.17	2.900/73.66	NO	
-Y32	2 X 32	3.100/78.74	3.217/81.71	3.000/76.20	NO	
-Y33	2 X 33	3.200/81.28	3.317/84.25	3.100/78.74	NO	
-Y34	2 X 34	3.300/83.82	3.417/86.79	3.200/81.28	NO	
-Y35	2 X 35	3.400/86.36	3.517/89.33	3.300/83.82	NO	
-Y36	2 X 36	3.500/88.90	3.617/91.87	3.400/86.36	NO	
-Y37	2 X 37	3.600/91.44	3.717/94.41	3.500/88.90	NO	
-Y38	2 X 38	3.700/93.98	3.817/96.95	3.600/91.44	NO	
-Y39	2 X 39	3.800/96.52	3.917/99.49	3.700/93.98	NO	
-Y40	2 X 40	3.900/99.06	4.017/102.03	3.800/96.52	NO	
-Y41	2 X 41	4.000/101.60	4.117/104.57	3.900/99.06	NO	
-Y42	2 X 42	4.100/104.14	4.217/107.11	4.000/101.60	NO	
-Y43	2 X 43	4.200/106.68	4.317/109.65	4.100/104.14	NO	
-Y44	2 X 44	4.300/109.22	4.417/112.19	4.200/106.68	NO	
-Y45	2 X 45	4.400/111.76	4.517/114.73	4.300/109.22	NO	
-Y46	2 X 46	4.500/114.30	4.617/117.27	4.400/111.76	NO	
-Y47	2 X 47	4.600/116.84	4.717/119.81	4.500/114.30	NO	
-Y48	2 X 48	4.700/119.38	4.817/122.35	4.600/116.84	NO	
-Y49	2 X 49	4.800/121.92	4.917/124.89	4.700/119.38	NO	
68622-Y50	2 X 50	4.900/124.46	5.017/127.43	4.800/121.92	NO	
68622-Y25P	2 X 25	2.400/60.96	2.517/63.93	2.300/58.42	YES	

NOTE 13

NOTES 7&11

mal't. code SEE NOTES 1,3 & 7		surface ISO 1302	tolerance ISO 146 ISO 1001	projection	product family DUBOX
lfr	ecr no	dr	date	INCH/MM	title SMT DOUBLE ROW LATCHED VCC ASSEMBLY
w				scale 1:1	dwg no 68622
		angles	linear		sheet 5 of 5 size A3
		0'±2'	XXX±0.05/XX±0.13 XXX±0.020/XX±0.051		type Product Customer Drawing
		dr	J. SHREINER 12/18/90		
		eng	M. HAHN 12/18/90		
		chr	M. HAHN 12/18/90		
		appd	M. HAHN 12/18/90		
sheet	revision				
index	sheet				