

PRODUCT NUMBER
SEE TABLE

NOTE 4

DIM "D" $\pm .010 [\pm 0.25]$

$.025 \pm .001 [.64 \pm .03]$
ROUND or SQUARE, SEE TABLE

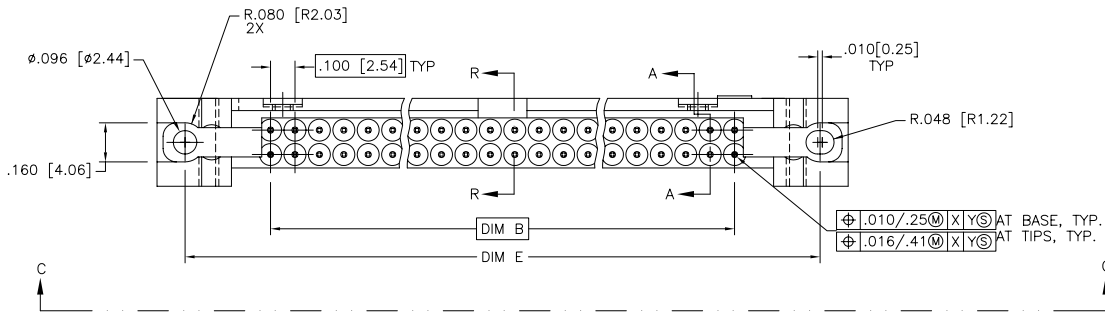
$\varnothing .010 / .25 \text{ (M)} \times \text{ (Y)} \text{ (S)}$ AT BASE, TYP.
 $\varnothing .016 / .41 \text{ (M)} \times \text{ (Y)} \text{ (S)}$ AT TIPS, TYP.

$.03 [0.76]$
MAX FLASH ON PIN

$.20 [5.08]$

\varnothing of PIN 1

SEE DETAILS ON SH. 2 & TABLE
FOR POLARIZATION FEATURE
ARRANGEMENT AND STYLE



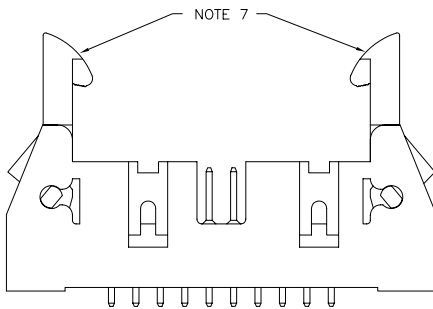
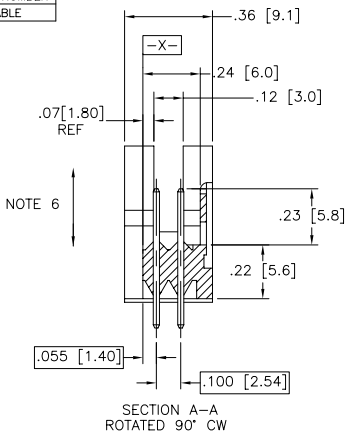
16-508-036,
16-508-002, 16-508-131

mat'l. code	surface	tolerance	projection	product family
	ISO 1302	ISO 406		QKE. HDR.
		ISO 1101		
ltr	ecn	no	dr	date
H	V91075	EPK	5/6/99	
J	V00871	EPK	4/11/00	
K	V01240	MDF	5/11/00	0 \pm 2"
L	V06-0343	GIP	3/24/03	dr J. SHREINER 11/15/90
M	N05-0094	MHT	4/4/05	enrg M. SMIK 11/15/90
N	M06-0282	AGS	7/22/06	chr M. SMYK 11/15/90
P	M07-0366	MHT	8/17/07	appd M. SMYK 11/15/90
sheet	revision	P	P	P
index	sheet	1	2	3
		4	5	6
		7	8	

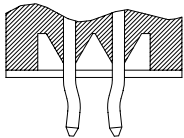
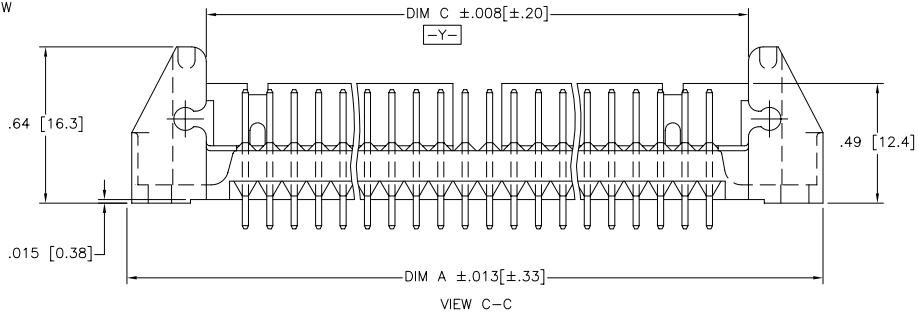
tolerance unless otherwise specified	INCH/MM	scale	product family
$\times \times \times 01 / \times \times 01$		2:1	QKE. HDR.
$\times \times \times 05 / \times \times 03$			
$\times \times \times 0020 / \times \times 005$			
title			QUICKIE HDR, STRIGHT
			3 WALL LATCH & EJECT
dwg no	sheet 1 of 8	size	
66207		A3	
type	Product	Customer	Drawing

PDM: Rev:P STATUS:Released Printed: Apr 12, 2011

PRODUCT NUMBER
SEE TABLE



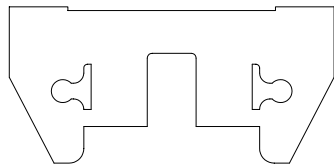
HEADER WITH LATCHES



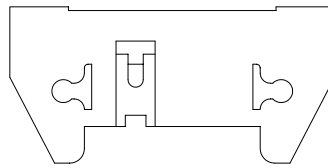
SECTION R-R

mat'l. code		surface	tolerance	projection	product family
ISO 1302		ISO 406	ISO 1101		QKE. HDR.
tolerances unless otherwise specified		linear: $\frac{XX1.01}{XX1.0}$ $\frac{XX1.05}{XX1.03}$ $\frac{XXX1.0020}{XX1.005}$			title
ltr	ecn	no	dr	date	3 WALL LATCH & EJECT
P					scale 2:1
angles		linear			sheet 2 of 8 size
0°±2°					66207
dr		J. SHREINER 11/15/90			A3
enrg		M. SMIK 11/15/90			type Product Customer Drawing
chr		M. SMYK 11/15/90			
appd		M. SMYK 11/15/90			
sheet	revision				
index	sheet				

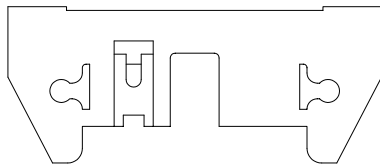
PRODUCT NUMBER
SEE TABLE



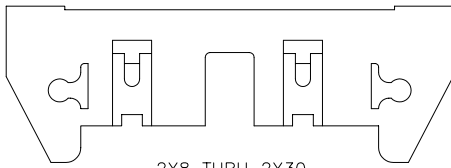
2X5
STYLE A



2X5
STYLE B



2X7
STYLE C



2X8 THRU 2X30
2X10 SHOWN
STYLE D

NOTES:

1. MOLDING MATERIAL: GLASS FILLED POLYESTER FLAME RETARDANT PER UL- 94V-0. COLOR: BLUE
2. PIN MATERIAL: PHOS BRONZE
- ③ 1° MAX DRAFT PERMISSIBLE ON ALL SURFACES UNLESS OTHERWISE SPECIFIED.
- ④ LOGO LOCATED APPROX, AS SHOWN.
5. RECOMMENDED MOUNTING SCREW: #2-56 FILLISTER HD. MACH. SCREW 3/8 LG. FOR 1/16" AND 3/32" BOARD 7/16" LG. FOR 1/8" BOARD.
6. 4 LBS/2.3 KG MIN PIN RETENTION IN BOTH DIRECTIONS. (SEE TABLE)
7. HEADER WITH LOW PROFILE (LP) LATCHES (SEE TABLE) ARE DESIGNED TO BE USED WITH FEMALE CONNECTORS WITHOUT STRAIN RELIEF. HEADERS WITH (STD) LATCHES (SEE TABLE) ARE DESIGNED TO BE USED WITH FEMALE CONNECTORS WITH STRAIN RELIEF.
8. PLATING ON LEAD-IN PORTION OF PIN IS MANUFACTURING OPTION.
9. SPECIAL LATCH HEIGHT TO BE USED WITH CARD CONNECTOR APPLICATION.
- ⑩ RETENTION FEATURE AVAILABLE ON CONNECTORS WITH .105/2.67, .120/3.05, OR .150/3.81 TAIL LENGTH RETENTIVE P/N INCLUDES THE LETTER "R" AFTER THE EXISTING P/N.
EXAMPLE: 66207-XXX FOR EXISTING P/N
66207-XXXR FOR RETENTIVE P/N.
RETENTIVE FEATURE LOCATION - SEE TABLE
SEE SECTION R-R ON SH. 2.
- ⑪ ADD "LF" SUFFIX AT THE END OF PART NUMBER FOR LEAD FREE.
12. THE HOUSING WILL WITHSTAND EXPOSURE TO 260°C PEAK TEMPERATURE FOR 15 SECONDS IN A WAVE SOLDER APPLICATION WITH A 1.5mm MINIMUM THICK CIRCUIT BOARD. SEE APPLICATION NOTES/PROCEDURES IF THEY ARE AVAILABLE.
- ⑬ THIS PRODUCT MEETS EUROPEAN UNION DIRECTIVES AND OTHER COUNTRY REGULATION AS DESCRIBED IN GS-22-008.
- ⑭ PLATING OPTIONS:
MAY BE EITHER GOLD OR GXT PLATED AT MANUFACTURER'S OPTION.

mat'l. code		surface ISO 1302	tolerance ISO 406 ISO 1101	projection	product family QKE. HDR.
ltr	ecn no	dr	date	title	
P				QUICKIE HDR, STRIGHT 3 WALL LATCH & EJECT	
P		tolerances unless otherwise specified		INCH/MM	sheet 3 of 8 size
		angles	linear	scale 2:1	66207 A3
		0°±2°	XX1.00/XX1.03 XXX1.000/XXX1.051		type Product Customer Drawing
		dr	J. SHREINER	t11/15/90	
		enrg	M. SMIK	t11/15/90	
		chr	M. SMYK	t11/15/90	
		appd	M. SMYK	t11/15/90	
sheet index	revision sheet				

PRODUCT NO NOTE 11	SIZE	DIM A	DIM B	DIM C	DIM D	DIM E	LATCHES NOTE 7	STYLE	PIN SHAPE	PIN PLATING (NOTE 14)	
66207-001	2 X 5	1.330/33.78	.400/10.16	.720/18.29	.105/2.67	1.100/27.94	NO	A	RND	30µ"/0.76µ Au OR GXT OVER 50µ"/1.27µ Ni	
-002	2 X 7	1.530/38.86	.600/15.24	.920/23.37		1.300/33.02		C			
-003	2 X 8	1.630/41.40	.700/17.78	1.020/25.91		1.400/35.56		D			
-004	2 X 10	1.830/46.48	.900/22.86	1.220/30.99		1.600/40.64					
-005	2 X 13	2.130/54.10	1.200/30.48	1.520/38.61		1.900/48.26					
-006	2 X 17	2.530/64.26	1.600/40.64	1.920/48.77		2.300/58.42					
-007	2 X 20	2.830/71.88	1.900/48.26	2.220/56.39		2.600/66.04					
-008	2 X 25	3.330/84.58	2.400/60.96	2.720/69.09		3.100/78.74					
-009	2 X 30	3.830/97.28	2.900/73.66	3.220/81.79		3.600/91.44	NO	D			
-010	2 X 5	1.330/33.78	.400/10.16	.720/18.29		1.100/27.94	STD	A			
-011	2 X 7	1.530/38.86	.600/15.24	.920/23.37		1.300/33.02		C			
-012	2 X 8	1.630/41.40	.700/17.78	1.020/25.91		1.400/35.56		D			
-013	2 X 10	1.830/46.48	.900/22.86	1.220/30.99		1.600/40.64					
-014	2 X 13	2.130/54.10	1.200/30.48	1.520/38.61		1.900/48.26					
-015	2 X 17	2.530/64.26	1.600/40.64	1.920/48.77		2.300/58.42					
-016	2 X 20	2.830/71.88	1.900/48.26	2.220/56.39		2.600/66.04					
-017	2 X 25	3.330/84.58	2.400/60.96	2.720/69.09		3.100/78.74					
-018	2 X 30	3.830/97.28	2.900/73.66	3.220/81.79		3.600/91.44	STD	D			
-019	2 X 5	1.330/33.78	.400/10.16	.720/18.29		1.100/27.94	LP	A			
-020	2 X 7	1.530/38.86	.600/15.24	.920/23.37		1.300/33.02		C			
-021	2 X 8	1.630/41.40	.700/17.78	1.020/25.91		1.400/35.56		D			
-022	2 X 10	1.830/46.48	.900/22.86	1.220/30.99		1.600/40.64					
-023	2 X 13	2.130/54.10	1.200/30.48	1.520/38.61		1.900/48.26					
-024	2 X 17	2.530/64.26	1.600/40.64	1.920/48.77		2.300/58.42					
-025	2 X 20	2.830/71.88	1.900/48.26	2.220/56.39		2.600/66.04					
-026	2 X 25	3.330/84.58	2.400/60.96	2.720/69.09		3.100/78.74					
-027	2 X 30	3.830/97.28	2.900/73.66	3.220/81.79		3.600/91.44	LP	D			
-028	2 X 5	1.330/33.78	.400/10.16	.720/18.29		1.100/27.94	NO	B			
-029	2 X 5	1.330/33.78	.400/10.16	.720/18.29		1.100/27.94	STD	B			
-030	2 X 5	1.330/33.78	.400/10.16	.720/18.29	.105/2.67	1.100/27.94	LP	B			
-031	2 X 5	1.330/33.78	.400/10.16	.720/18.29	.150/3.81			NO	A		
-032	2 X 7	1.530/38.86	.600/15.24	.920/23.37		1.300/33.02		C			
-033	2 X 8	1.630/41.40	.700/17.78	1.020/25.91		1.400/35.56		D			
-034	2 X 10	1.830/46.48	.900/22.86	1.220/30.99		1.600/40.64		D			
-035	2 X 13	2.130/54.10	1.200/30.48	1.520/38.61		1.900/48.26		D			
66207-036	2 X 17	2.530/64.26	1.600/40.64	1.920/48.77	.150/3.81	2.300/58.42	NO	D	RND	30µ"/0.76µ Au OR GXT OVER 50µ"/1.27µ Ni	

mat'l. code	surface ISO 1302	tolerance ISO 406 ISO 1101	projection	product family
ltr ecn no dr date	tolerances unless otherwise specified	angles linear	INCH/MM	QKE. HDR.
P	0°±2'	dr J. SHREINER 11/15/90	scale 2:1	title
	enrg M. SMIK 11/15/90	chr M. SMYK 11/15/90	FCJ	QUICKIE HDR, STRIGHT
	appd M. SMYK 11/15/90			3 WALL LATCH & EJECT
sheet index	revision sheet			dwg no 66207 sheet 4 of 8 size A3
				type Product Customer Drawing

PDM: Rev:P STATUS:Released Printed: Apr 12, 2011

PRODUCT NO NOTE 11	SIZE	DIM A	DIM B	DIM C	DIM D	DIM E	LATCH NOTE 7	STYLE	PIN SHAPE	PIN PLATING (NOTE 14)
66207-037	2 X 20	2.830/71.88	1.900/48.26	2.220/56.39	.150/3.81	2.600/76.04	NO	D	RND	30µ"/0.76µ Au OR GXT OVER 50µ"/1.27µ Ni
-038	2 X 25	3.330/84.58	2.400/60.96	2.720/69.09		3.100/78.74	NO	D		
-039	2 X 30	3.830/97.28	2.900/73.66	3.220/81.79		3.600/91.44	NO	D		
-040	2 X 5	1.330/33.78	.400/10.16	.720/18.29		1.100/27.94	STD	A		
-041	2 X 7	1.530/38.86	.600/15.24	.920/23.37		1.300/33.02		C		
-042	2 X 8	1.630/41.40	.700/17.78	1.020/25.91		1.400/35.56		D		
-043	2 X 10	1.830/46.48	.900/22.86	1.220/30.99		1.600/40.64				
-044	2 X 13	2.130/54.10	1.200/30.48	1.520/38.61		1.900/48.26				
-045	2 X 17	2.530/64.26	1.600/40.64	1.920/48.77		2.300/58.42				
-046	2 X 20	2.830/71.88	1.900/48.26	2.220/56.39		2.600/76.04				
-047	2 X 25	3.330/84.58	2.400/60.96	2.720/69.09		3.100/78.74				
-048	2 X 30	3.830/97.28	2.900/73.66	3.220/81.79		3.600/91.44	STD	D		
-049	2 X 5	1.330/33.78	.400/10.16	.720/18.29		1.100/27.94	LP	A		
-050	2 X 7	1.530/38.86	.600/15.24	.920/23.37		1.300/33.02		C		
-051	2 X 8	1.630/41.40	.700/17.78	1.020/25.91		1.400/35.56		D		
-052	2 X 10	1.830/46.48	.900/22.86	1.220/30.99		1.600/40.64				
-053	2 X 13	2.130/54.10	1.200/30.48	1.520/38.61		1.900/48.26				
-054	2 X 17	2.530/64.26	1.600/40.64	1.920/48.77		2.300/58.42				
-055	2 X 20	2.830/71.88	1.900/48.26	2.220/56.39		2.600/76.04				
-056	2 X 25	3.330/84.58	2.400/60.96	2.720/69.09		3.100/78.74				
-057	2 X 30	3.830/97.28	2.900/73.66	3.220/81.79		3.600/91.44	LP	D		
-058	2 X 5	1.330/33.78	.400/10.16	.720/18.29		1.100/27.94	NO	B		
-059	2 X 5	1.330/33.78	.400/10.16	.720/18.29		1.100/27.94	STD	B		
-060	2 X 5	1.330/33.78	.400/10.16	.720/18.29	.150/3.81	1.100/27.94	LP	B	RND	
-061	2 X 5	1.330/33.78	.400/10.16	.720/18.29	.675/17.15	1.100/27.94	NO	A	SQ	
-062	2 X 7	1.530/38.86	.600/15.24	.920/23.37		1.300/33.02		C		
-063	2 X 8	1.630/41.40	.700/17.78	1.020/25.91		1.400/35.56		D		
-064	2 X 10	1.830/46.48	.900/22.86	1.220/30.99		1.600/40.64				
-065	2 X 13	2.130/54.10	1.200/30.48	1.520/38.61		1.900/48.26				
-066	2 X 17	2.530/64.26	1.600/40.64	1.920/48.77		2.300/58.42				
-067	2 X 20	2.830/71.88	1.900/48.26	2.220/56.39		2.600/76.04				
-068	2 X 25	3.330/84.58	2.400/60.96	2.720/69.09		3.100/78.74				
-069	2 X 30	3.830/97.28	2.900/73.66	3.220/81.79		3.600/91.44	NO	D		
-070	2 X 5	1.330/33.78	.400/10.16	.720/18.29		1.100/27.94	STD	A		
-071	2 X 7	1.530/38.86	.600/15.24	.920/23.37		1.300/33.02	STD	C		
66207-072	2 X 8	1.630/41.40	.700/17.78	1.020/25.91	.675/17.15	1.400/35.56	STD	D	SQ	30µ"/0.76µ Au OR GXT OVER 50µ"/1.27µ Ni

mat'l. code	surface	tolerance	projection	product family
ISO 1302	ISO 1302	ISO 406	ISO 1101	QKE. HDR.
tr	ecn	no	dr	date
P				
tolerances unless otherwise specified		title		
angles	linear	XX1/05/XX113	QUICKIE HDR, STRIGHT	
0°±2'		XXX1.000/XXX1.051	3 WALL LATCH & EJECT	
dr	J. SHREINER	11/15/90	scale 2:1	sheet 5 of 8 size
enrg	M. SMIK	11/15/90	FCJ	66207
chr	M. SMYK	11/15/90		A3
appd	M. SMYK	11/15/90	type	Product Customer Drawing
sheet index	revision sheet			

PDM: Rev:P STATUS:Released Printed: Apr 12, 2011

PRODUCT NO NOTE 11	SIZE	DIM A	DIM B	DIM C	DIM D	DIM E	LATCH NOTE 7	STYLE	PIN SHAPE	PIN PLATING (NOTE 14)
66207-073	2 X 10	1.830/46.48	.900/22.86	1.220/30.99	.675/17.15	1.600/40.64	STD	D	SQ	30µ"/0.76µ Au OR GXT OVER 50µ"/1.27µ Ni
-074	2 X 13	2.130/54.10	1.200/30.48	1.520/38.61		1.900/48.26				
-075	2 X 17	2.530/64.26	1.600/40.64	1.920/48.77		2.300/58.42				
-076	2 X 20	2.830/71.88	1.900/48.26	2.220/56.39		2.600/76.04				
-077	2 X 25	3.330/84.58	2.400/60.96	2.720/69.09		3.100/78.74				
-078	2 X 30	3.830/97.28	2.900/73.66	3.220/81.79		3.600/91.44	STD	D		
-079	2 X 5	1.330/33.78	.400/10.16	.720/18.29		1.100/27.94	LP	A		
-080	2 X 7	1.530/38.86	.600/15.24	.920/23.37		1.300/33.02		C		
-081	2 X 8	1.630/41.40	.700/17.78	1.020/25.91		1.400/35.56		D		
-082	2 X 10	1.830/46.48	.900/22.86	1.220/30.99		1.600/40.64				
-083	2 X 13	2.130/54.10	1.200/30.48	1.520/38.61		1.900/48.26				
-084	2 X 17	2.530/64.26	1.600/40.64	1.920/48.77		2.300/58.42				
-085	2 X 20	2.830/71.88	1.900/48.26	2.220/56.39		2.600/76.04				
-086	2 X 25	3.330/84.58	2.400/60.96	2.720/69.09		3.100/78.74				
-087	2 X 30	3.830/97.28	2.900/73.66	3.220/81.79		3.600/91.44	LP	D		
-088	2 X 5	1.330/33.78	.400/10.16	.720/18.29		1.100/27.94	NO	B		
-089	2 X 5	1.330/33.78	.400/10.16	.720/18.29		1.100/27.94	STD	B		
-090	2 X 5	1.330/33.78	.400/10.16	.720/18.29	.675/17.15	1.100/27.94	LP	B	SQ	
-091	2 X 12	2.030/45.56	1.100/27.94	1.420/36.07	.105/2.67	1.800/45.72	NO	D	RND	
-092					.105/2.67		STD			
-093					.105/2.67		LP			
-094					.150/3.81		NO			
-095					.150/3.81		STD			
-096					.150/3.81		LP		RND	
-097					.675/17.15		NO		SQ	
-098					.675/17.15		STD		SQ	
-099	2 X 12	2.030/45.56	1.100/27.94	1.420/36.07	.675/17.15	1.800/45.72	LP		SQ	
-100	2 X 15	2.330/59.18	1.400/35.56	1.720/43.69	.105/2.67	2.100/53.34	NO		RND	
-101					.105/2.67		STD			
-102					.105/2.67		LP			
-103					.150/3.81		NO			
-104					.150/3.81		STD			
-105					.150/3.81		LP		RND	
-106					.675/17.15		NO		SQ	
-107					.675/17.15		STD		SQ	
66207-108	2 X 15	2.330/59.18	1.400/35.56	1.720/43.69	.675/17.15	2.100/53.34	LP	D	SQ	30µ"/0.76µ Au OR GXT OVER 50µ"/1.27µ Ni

mat'l. code	surface ISO 1302	tolerance ISO 406 ISO 1101	projection	product family
ltr ecn no dr date	tolerances unless otherwise specified	angles linear	INCH/MM	QKE. HDR.
P	0°±2'	J. SHREINER	scale 2:1	title
	enrg M. SMIK	M. SMYK	FCJ	3 WALL LATCH & EJECT
	chr M. SMYK	M. SMYK		dwg no 66207 sheet 6 of 8 size A3
	appd M. SMYK			type Product Customer Drawing
sheet index	revision sheet			

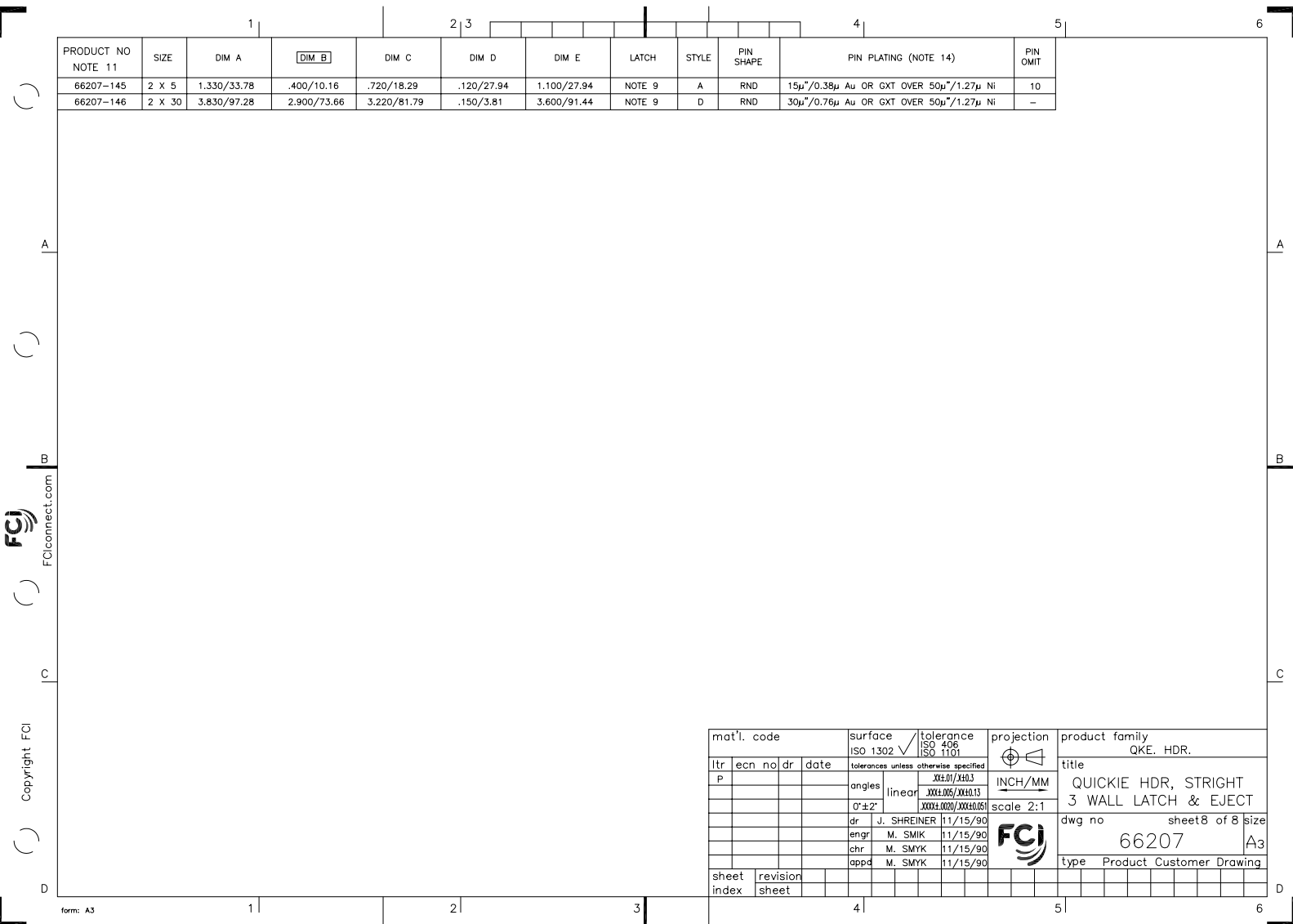
PDM: Rev:P STATUS:Released Printed: Apr 12, 2011

PRODUCT NO NOTE 11	SIZE	DIM A	DIM B	DIM C	DIM D	DIM E	LATCH	STYLE	PIN SHAPE	PIN PLATING (NOTE 14)	PIN OMIT
66207-109	2 X 22	3.030/76.96	2.100/53.34	2.420/61.47	.105/2.67	2.800/81.12	NO	D	RND	30µ"/0.76µ Au OR GXT OVER 50µ"/1.27µ Ni	
-110					.105/2.67		STD				
-111					.105/2.67		LP				
-112					.150/3.81		NO				
-113					.150/3.81		STD				
-114					.150/3.81		LP		RND		
-115					.675/17.15		NO		SQ		
-116					.675/17.15		STD		SQ		
-117	2 X 22	3.030/76.96	2.100/53.34	2.420/61.47	.675/17.15	2.800/81.12	LP		SQ	30µ"/0.76µ Au OR GXT OVER 50µ"/1.27µ Ni	
-118	2 X 17	2.530/64.26	1.600/40.64	1.920/48.77	.150/3.81	2.300/58.42	LP		RND	15µ"/0.38µ Au OR GXT OVER 50µ"/1.27µ Ni	
-119	2 X 17	2.530/64.26	1.600/40.64	1.920/48.77	.150/3.81	2.300/58.42	NO		RND	15µ"/0.38µ Au OR GXT OVER 50µ"/1.27µ Ni	
-120	2 X 10	1.830/46.48	.900/22.86	1.220/30.99	.105/2.67	1.600/40.64	NOTE 9		SQ	30µ"/0.76µ Au OR GXT OVER 50µ"/1.27µ Ni	
-121	2 X 10	1.830/46.48	.900/22.86	1.220/30.99	.150/3.81	1.600/40.64	NOTE 9	D	RND		
-122	2 X 5	1.330/33.78	.400/10.16	.720/18.29	.105/2.67	1.100/27.94	NOTE 9	B	SQ		
-123	2 X 5	1.330/33.78	.400/10.16	.720/18.29		1.100/27.94	NO	B			
-124	2 X 10	1.830/46.48	.900/22.86	1.220/30.99		1.600/40.64	NO	D			
-125	2 X 25	3.330/84.58	2.400/60.96	2.720/69.09		3.100/78.74	NOTE 9	D			
-126	2 X 25	3.330/84.58	2.400/60.96	2.720/69.09		3.100/78.74	NO	D			
-127	2 X 5	1.330/33.78	.400/10.16	.720/18.29		1.100/27.94	NO	A			
-128	2 X 5	1.330/33.78	.400/10.16	.720/18.29		1.100/27.94	NOTE 9	A			
-129	2 X 7	1.530/38.86	.600/15.24	.920/23.37		1.300/33.02	NO	C			
-130	2 X 7	1.530/38.86	.600/15.24	.920/23.37		1.300/33.02	NOTE 9	C			
-131	2 X 8	1.630/41.40	.700/17.78	1.020/25.91		1.400/35.56	NO	D			
-132	2 X 8	1.630/41.40	.700/17.78	1.020/25.91		1.400/35.56	NOTE 9				
-133	2 X 13	2.130/54.10	1.200/30.48	1.520/38.61		1.900/48.26	NO				
-134	2 X 13	2.130/54.10	1.200/30.48	1.520/38.61		1.900/48.26	NOTE 9				
-135	2 X 17	2.530/64.26	1.600/40.64	1.920/48.77		2.300/58.42	NO				
-136	2 X 17	2.530/64.26	1.600/40.64	1.920/48.77		2.300/58.42	NOTE 9				
-137	2 X 20	2.830/71.88	1.900/48.26	2.220/56.39		2.600/66.04	NO				
-138	2 X 20	2.830/71.88	1.900/48.26	2.220/56.39		2.600/66.04	NOTE 9				
-139	2 X 30	3.830/97.28	2.900/73.66	3.220/81.79		3.600/91.44	NO				
-140	2 X 30	3.830/97.28	2.900/73.66	3.220/81.79		3.600/91.44	NOTE 9	D	SQ	30µ"/0.76µ Au OR GXT OVER 50µ"/1.27µ Ni	
-141	2 X 5	1.330/33.78	.400/10.16	.720/18.29	.105/2.67	1.100/27.94	LP	A	RND	15µ"/0.38µ Au OR GXT OVER 50µ"/1.27µ Ni	10
-142	2 X 5	1.330/33.78	.400/10.16	.720/18.29	.120/27.94	1.100/27.94	LP	A	RND	15µ"/0.38µ Au OR GXT OVER 50µ"/1.27µ Ni	10
-143	2 X 5	1.330/33.78	.400/10.16	.720/18.29	.105/2.67	1.100/27.94	NO	A	RND	15µ"/0.38µ Au OR GXT OVER 50µ"/1.27µ Ni	10
66207-144	2 X 5	1.330/33.78	.400/10.16	.720/18.29	.120/27.94	1.100/27.94	NO	A	RND	15µ"/0.38µ Au OR GXT OVER 50µ"/1.27µ Ni	10

mat'l. code	surface ISO 1302	tolerance ISO 406 ISO 1101	projection	product family QKE. HDR.
ltr ecn no dr date	tolerances unless otherwise specified	angles linear	INCH/MM	title QUICKIE HDR, STRIGHT 3 WALL LATCH & EJECT
P	0°±2'	J. SHREINER 11/15/90	scale 2:1	dwg no 66207 sheet 7 of 8 size A3
	enrg M. SMIK 11/15/90	chr M. SMYK 11/15/90	FCJ	type Product Customer Drawing
sheet index	revision sheet	appd M. SMYK 11/15/90		

PDM: Rev:P STATUS:Released Printed: Apr 12, 2011

PRODUCT NO NOTE 11	SIZE	DIM A	DIM B	DIM C	DIM D	DIM E	LATCH	STYLE	PIN SHAPE	PIN PLATING (NOTE 14)	PIN OMIT
66207-145	2 X 5	1.330/33.78	.400/10.16	.720/18.29	.120/27.94	1.100/27.94	NOTE 9	A	RND	15μ"/0.38μ Au OR GXT OVER 50μ"/1.27μ Ni	10
66207-146	2 X 30	3.830/97.28	2.900/73.66	3.220/81.79	.150/3.81	3.600/91.44	NOTE 9	D	RND	30μ"/0.76μ Au OR GXT OVER 50μ"/1.27μ Ni	-



mat'l. code	surface ISO 1302	tolerance ISO 406 ISO 1101	projection 	product family QKE. HDR.						
ltr	ecn	no	dr	date	tolerances unless otherwise specified	angles	linear	INCH/MM	scale 2:1	title QUICKIE HDR, STRIGHT 3 WALL LATCH & EJECT
P					XX1.05/XX1.13 XXX4.000/XXX4.051	0°±2°				dwg no 66207
					dr J. SHREINER 11/15/90					sheet 8 of 8 size A3
					enrg M. SMIK 11/15/90					type Product Customer Drawing
					chr M. SMYK 11/15/90					
					appd M. SMYK 11/15/90					
sheet index	revision sheet									

FCJ
FCIconnect.com

Copyright FCJ