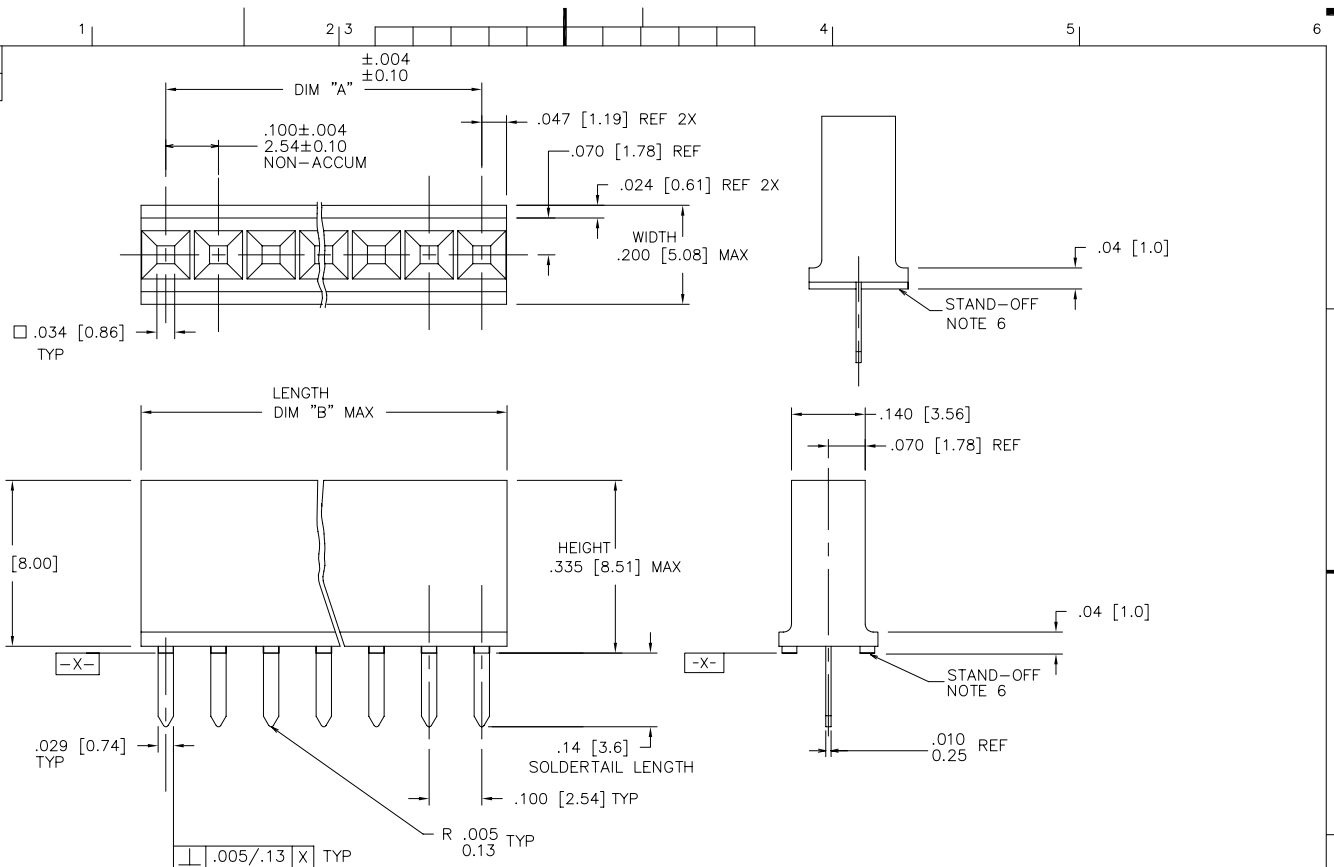


PRODUCT NUMBER
SEE TABLE

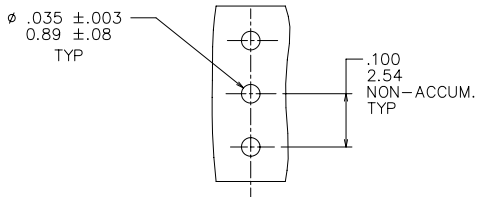


mat'l. code	surface	tolerance	projection	product family
SEE NOTE 1 & 2	ISO 1302	ISO 406	ISO 1101	CARD CONN
ISO 1302	tolerances unless otherwise specified	.XX-01/.XX-3	INCH/MM	title
itr	ecn	no	dr	date
N	V70080	MDF	2/27/97	
P	V94332	DAI	11/16/99	
R	V94468	MDF	12/27/99	0'±2'
S	V00802	MDF	4/18/00	dr
T	M05-0229	ERE	5/07/05	engr
U	M06-0210	MHT	5/03/06	chr
V	M07-0143	ERE	03/03/07	appd
sheet	revision	V	V	V
index	sheet	1	2	3
		4	5	6

product family	CARD CONN
title	VERT. CARD CONNECTOR
	.100/2.54 CTR. SINGLE ROW
scale	4:1
dwg no	65780
sheet 1 of 6	size A3
type	Product Customer Drawing

PDM: Rev:V STATUS:Released Printed: Oct 13, 2010

PRODUCT NUMBER
SEE TABLE



NOTES.

1. HOUSING MATERIAL: FILLED POLYESTER,
FLAME RETARDANT PER UL 94V-0.
COLOR: BLACK.
2. TERMINAL MATERIAL AND PLATING: SEE TABULATION
3. RECOMMENDED PIN SIZE: .25±.001/0.65±0.03.
4. RECOMMENDED PIN LENGTH: .210±.020/5.33±0.51.
5. MARK FCI PART NUMBER AND DATE CODE LEGIBLE ON TUBE LABEL.
6. STAND-OFF CONFIGURATION BUMP OR RIB AT MANUFACTURERS OPTION.
7. SOLDER TAIL IS POST PLATED GOLD.
THE "V" SHAPED TIP OF SOLDER TAIL ALLOWED BARE EDGES DUE TO CUT-OFF
8. ADD "LF" SUFFIX AT THE END OF PART NUMBER FOR LEAD FREE OPTION.
9. THIS PRODUCT MEETS EUROPEAN UNION DIRECTIVES AND OTHER
COUNTRY REGULATION AS DESCRIBED IN GS-22-008.
10. THE HOUSING WILL WITHSTAND EXPOSURE TO 260°C PEAK TEMPERATURE
FOR 15 SECONDS IN A WAVE SOLDER APPLICATION WITH A 1.5mm
MINIMUM THICK CIRCUIT BOARD. SEE APPLICATION NOTES/PROCEDURES
IF THEY ARE AVAILABLE.
11. "THIS PRODUCT HAS 100% TIN PLATING IN THE INTERFACE AND
HAS NOT BEEN TESTED FOR WHISKER GROWTH IN ALL INTERCONNECT
ENVIRONMENTS."

mat'l. code		surface ISO 1302	tolerance ISO 406 ISO 1101	projection	product family CARD CONN
ltr	ecn	no	dr	date	title
V					VERT. CARD CONNECTOR
		tolerances unless otherwise specified		INCH/MM	.100/2.54 CTR. SINGLE ROW
		angles	linear	scale 4:1	FCJ
		0°±2°	.XX4-01/.XX4-3 .XXXX.0.005/.014-13 .XXXX.0020/.XXXX.061		sheet 2 of 6 size
		dr	R. SEIPLE	8/11/98	65780
		engr	M.HAHN	8/11/98	A3
		chr	M.HAHN	8/11/98	type Product Customer Drawing
		appd	M.HAHN	8/11/98	
sheet	revision				
index	sheet				

PRODUCT NO	SIZE	DIM A	DIM B	MATERIAL AND PLATING	LEAD FREE OPTION		
65780-001				UNASSIGNED			
-002	1 X 2	.100/2.54	.200/5.08	BODY MATERIAL: BRASS BODY PLATING: 40u"/1.02u MIN THICKNESS C. I. GOLD INSIDE CONTACT AREA. 10u"/.25u MIN GOLD ON REST OF TERMINAL BODY OVER 50u"/1.27u MIN NICKEL. SPRING MAT'L: BeCu HEAT TREATED SPRING PLATING: GOLD FLASH	NOTE 8, 9		
-003	1 X 3	.200/5.08	.300/7.62				
-004	1 X 4	.300/7.62	.400/10.16				
-005	1 X 5	.400/10.16	.500/12.70				
-006	1 X 6	.500/12.70	.600/15.24				
-007	1 X 7	.600/15.24	.700/17.78				
-008	1 X 8	.700/17.78	.800/20.32				
-009	1 X 9	.800/20.32	.900/22.86				
-010	1 X 10	.900/22.86	1.000/25.40				
-011	1 X 11	1.000/25.40	1.100/27.94				
-012	1 X 12	1.100/27.94	1.200/30.48				
-013	1 X 13	1.200/30.48	1.300/33.02				
-014	1 X 14	1.300/33.02	1.400/35.56				
-015	1 X 15	1.400/35.56	1.500/38.10				
-016	1 X 16	1.500/38.10	1.600/40.64				
-017	1 X 17	1.600/40.64	1.700/43.18				
-018	1 X 18	1.700/43.18	1.800/45.72				
-019	1 X 19	1.800/45.72	1.900/48.26				
-020	1 X 20	1.900/48.26	2.000/50.80				
-021	1 X 21	2.000/50.80	2.100/53.34				
-022	1 X 22	2.100/53.34	2.200/55.88				
-023	1 X 23	2.200/55.88	2.300/58.42				
-024	1 X 24	2.300/58.42	2.400/60.96				
-025	1 X 25	2.400/60.96	2.500/63.50				
-026	1 X 26	2.500/63.50	2.600/66.04				
-027	1 X 27	2.600/66.04	2.700/68.58				
-028	1 X 28	2.700/68.58	2.800/71.12				
65780-029	1 X 29	2.800/71.12	2.900/73.66				NOTE 8, 9

mat'l. code		surface ISO 1302 <input checked="" type="checkbox"/>		tolerance ISO 406 <input checked="" type="checkbox"/>		projection		product family	
ltr		ecn no dr		date		angles linear		CARD CONN	
v						.XX4-01/.XX4-3		title	
						.XXXXX.0.005/.014.13		VERT. CARD CONNECTOR	
						.XXXXX.0050/.XXXX.061		.100/2.54 CTR. SINGLE ROWY	
						0'±2'		scale 4:1	
						dr R. SEIPLE 8/11/98		sheet 3 of 6 size	
						enrg M. HAHN 8/11/98		65780 A3	
						chr M. HAHN 8/11/98		type Product Customer Drawing	
						appd M. HAHN 8/11/98			
sheet index		revision sheet							

PDM: Rev:V STATUS Released Printed: Oct 13, 2010

PRODUCT NO	SIZE	DIM A	DIM B	MATERIAL AND PLATING	LEAD FREE OPTION
65780-030	1 X 30	2.900/73.66	3.000/76.20	UNASSIGNED	
-031	1 X 31	3.000/76.20	3.100/78.74	BODY MATERIAL: BRASS BODY PLATING: 40u"/1.02u MIN THICKNESS C. I. GOLD INSIDE CONTACT AREA. 10u"/.25u MIN GOLD ON REST OF TERMINAL BODY OVER 50u"/1.27u MIN NICKEL. SPRING MAT'L: BeCu HEAT TREATED SPRING PLATING: GOLD FLASH	NOTE 8, 9
-032	1 X 32	3.100/78.74	3.200/81.28		
-033	1 X 33	3.200/81.28	3.300/83.82		
-034	1 X 34	3.300/83.82	3.400/86.36		
-035	1 X 35	3.400/86.36	3.500/88.90		
-036	1 X 36	3.500/88.90	3.600/91.44		NOTE 8, 9
-037				UNASSIGNED	
-038	1 X 2	.100/2.54	.200/5.08	BODY MATERIAL: BRASS BODY PLATING: 100u"/2.54u THICK Sn PLATE. SPRING MAT'L: BeCu HEAT TREATED SPRING PLATING: 30u"/.76u MIN ELECTROLESS TIN.	NOTE 8, 9 & 11
-039	1 X 3	.200/5.08	.300/7.62		
-040	1 X 4	.300/7.62	.400/10.16		
-041	1 X 5	.400/10.16	.500/12.70		
-042	1 X 6	.500/12.70	.600/15.24		
-043	1 X 7	.600/15.24	.700/17.78		
-044	1 X 8	.700/17.78	.800/20.32		
-045	1 X 9	.800/20.32	.900/22.86		
-046	1 X 10	.900/22.86	1.000/25.40		
-047	1 X 11	1.000/25.40	1.100/27.94		
-048	1 X 12	1.100/27.94	1.200/30.48		
-049	1 X 13	1.200/30.48	1.300/33.02		
-050	1 X 14	1.300/33.02	1.400/35.56		
-051	1 X 15	1.400/35.56	1.500/38.10		
-052	1 X 16	1.500/38.10	1.600/40.64		
-053	1 X 17	1.600/40.64	1.700/43.18		
-054	1 X 18	1.700/43.18	1.800/45.72		
-055	1 X 19	1.800/45.72	1.900/48.26		
-056	1 X 20	1.900/48.26	2.000/50.80		
-057	1 X 21	2.000/50.80	2.100/53.34		
65780-058	1 X 22	2.100/53.34	2.200/55.88		NOTE 8, 9 & 11

mat'l. code	surface	tolerance	projection	product family
ISO 1302	ISO 1302	ISO 406	ISO 1101	CARD CONN
ISO 1101	tolerances unless otherwise specified	XX4-01/XX4-3	INCH/MM	title
angles	linear	XXXX.0.005/XXXX.13	scale 4:1	VERT. CARD CONNECTOR
0°±2'	dr	XXXX.0050/XXXX.061		.100/2.54 CTR. SINGLE ROWY
engr	R. SEIPLE	8/11/98		dwg no
chr	M.HAHN	8/11/98		65780
appd	M.HAHN	8/11/98		sheet 4 of 6 size
sheet index	revision sheet			A3
				type Product Customer Drawing

PDM: Rev:V STATUS:Released Printed: Oct 13, 2010

PRODUCT NO	SIZE	DIM A	DIM B	MATERIAL AND PLATING	LEAD FREE OPTION
65780-059	1 X 23	2.200/55.88	2.300/58.42	UNASSIGNED	
-060	1 X 24	2.300/58.42	2.400/60.96	BODY MATERIAL: BRASS BODY PLATING: 100u"/2.54u THICK Sn PLATE. SPRING MAT'L: BeCu HEAT TREATED SPRING PLATING: 30u"/.76u MIN ELECTROLESS TIN.	NOTE 8, 9 & 11
-061	1 X 25	2.400/60.96	2.500/63.50		
-062	1 X 26	2.500/63.50	2.600/66.04		
-063	1 X 27	2.600/66.04	2.700/68.58		
-064	1 X 28	2.700/68.58	2.800/71.12		
-065	1 X 29	2.800/71.12	2.900/73.66		
-066	1 X 30	2.900/73.66	3.000/76.20		
-067	1 X 31	3.000/76.20	3.100/78.74		
-068	1 X 32	3.100/78.74	3.200/81.28		
-069	1 X 33	3.200/81.28	3.300/83.82		
-070	1 X 34	3.300/83.82	3.400/86.36		
-071	1 X 35	3.400/86.36	3.500/88.90		
-072	1 X 36	3.500/88.90	3.600/91.44		
-073					
-074	1 X 2	.100/2.54	.200/5.08		
-075	1 X 3	.200/5.08	.300/7.62	BODY MATERIAL: Cu BODY PLATING: 10u"/.25u Au FLASH INSIDE CONTACT AREA ONLY, WITH .001/.03 MIN HIGH Au DOT. SPRING MAT'L: BeCu HEAT TREATED SPRING PLATING: GOLD FLASH	NOTE 8, 9
-076	1 X 4	.300/7.62	.400/10.16		
-077	1 X 5	.400/10.16	.500/12.70		
-078	1 X 6	.500/12.70	.600/15.24		
-079	1 X 7	.600/15.24	.700/17.78		
-080	1 X 8	.700/17.78	.800/20.32		
-081	1 X 9	.800/20.32	.900/22.86		
-082	1 X 10	.900/22.86	1.000/25.40		
-083	1 X 11	1.000/25.40	1.100/27.94		
-084	1 X 12	1.100/27.94	1.200/30.48		
-085	1 X 13	1.200/30.48	1.300/33.02		
-086	1 X 14	1.300/33.02	1.400/35.56		
65780-087	1 X 15	1.400/35.56	1.500/38.10		NOTE 8, 9

mat'l. code	surface ISO 1302	tolerance ISO 406 ISO 1101	projection	product family CARD CONN
ltr	ecn	no	dr	date
V				
angles		linear		tolerances unless otherwise specified
0°±2"				.XX4-01/.X4-3 .XXXX-0.005/.014-13 .XXXX-0.020/.XXXX-061
dr	R. SEIPLE	8/11/98		
enrg	M.HAHN	8/11/98		
chr	M.HAHN	8/11/98		
appd	M.HAHN	8/11/98		
sheet index	revision sheet			

title	product family
VERT. CARD CONNECTOR	CARD CONN
.100/2.54 CTR. SINGLE ROW	
scale 4:1	
dwg no	sheet 5 of 6 size
65780	A3
type	Product Customer Drawing

PDM: Rev:V STATUS:Released Printed: Oct 13, 2010

PRODUCT NO	SIZE	DIM A	DIM B	MATERIAL AND PLATING	LEAD FREE OPTION
65780-088	1 X 16	1.500/38.10	1.600/40.64	UNASSIGNED	
-089	1 X 17	1.600/40.64	1.700/43.18	BODY MATERIAL: Cu BODY PLATING: 10 μ "/.25 μ Au FLASH INSIDE CONTACT AREA ONLY, WITH .001/.03 MIN HIGH Au DOT. SPRING MAT'L: BeCu HEAT TREATED SPRING PLATING: GOLD FLASH	NOTE 8, 9
-090	1 X 18	1.700/43.18	1.800/45.72		
-091	1 X 19	1.800/45.72	1.900/48.26		
-092	1 X 20	1.900/48.26	2.000/50.80		
-093	1 X 21	2.000/50.80	2.100/53.34		
-094	1 X 22	2.100/53.34	2.200/55.88		
-095	1 X 23	2.200/55.88	2.300/58.42		
-096	1 X 24	2.300/58.42	2.400/60.96		
-097	1 X 25	2.400/60.96	2.500/63.50		
-098	1 X 26	2.500/63.50	2.600/66.04		
-099	1 X 27	2.600/66.04	2.700/68.58		
-100	1 X 28	2.700/68.58	2.800/71.12		
-101	1 X 29	2.800/71.12	2.900/73.66		
-102	1 X 30	2.900/73.66	3.000/76.20		
-103	1 X 31	3.000/76.20	3.100/78.74		
-104	1 X 32	3.100/78.74	3.200/81.28		
-105	1 X 33	3.200/81.28	3.300/83.82		
-106	1 X 34	3.300/83.82	3.400/86.36		
-107	1 X 35	3.400/86.36	3.500/88.90		
-108	1 X 36	3.500/88.90	3.600/91.44	NOTE 8, 9	
-109	1 X 4	.300/7.62	.400/10.16	BODY MATERIAL: BRASS BODY PLATING: 100 μ "/2.54 μ THICK Sn PLATE. SPRING MAT'L: BeCu HEAT TREATED SPRING PLATING: 30 μ "/.76 μ MIN ELECTROLESS TIN.	NOTE 8, 9 & 11
65780-110	1 X 5	.400/10.16	.500/12.70		
65780-111	1 X 8	.700/17.78	.800/20.32	BODY MATERIAL: BRASS BODY PLATING: 40 μ "/1.02 μ Au IN CONTACT AREA ONLY, REMAINDER OF BODY .003 μ "/.08 μ Au. SOLDER TAIL: POST PLATED GOLD SPRING: BeCu HEAT TREATED SPRING PLATING: GOLD FLASH	NOTE 8, 9

NOTE 7	
--------	--

mat'l. code	surface	tolerance	projection	product family
ISO 1302	ISO 1302	ISO 406		CARD CONN
ISO 1101	tolerances unless otherwise specified	ISO 1101		title
angles	linear	.XX4-01/X4-3	INCH/MM	VERT. CARD CONNECTOR
0°±2'		XXXXX.005/XXXX.13	scale 4:1	.100/2.54 CTR. SINGLE ROW
dr	R. SEIPLE	8/11/98		sheet 6 of 6 size
enrg	M.HAHN	8/11/98		65780 A3
chr	M.HAHN	8/11/98		type Product Customer Drawing
appd	M.HAHN	8/11/98		
sheet index	revision sheet			

PDM: Rev:V STATUS:Released Printed: Oct 13, 2010