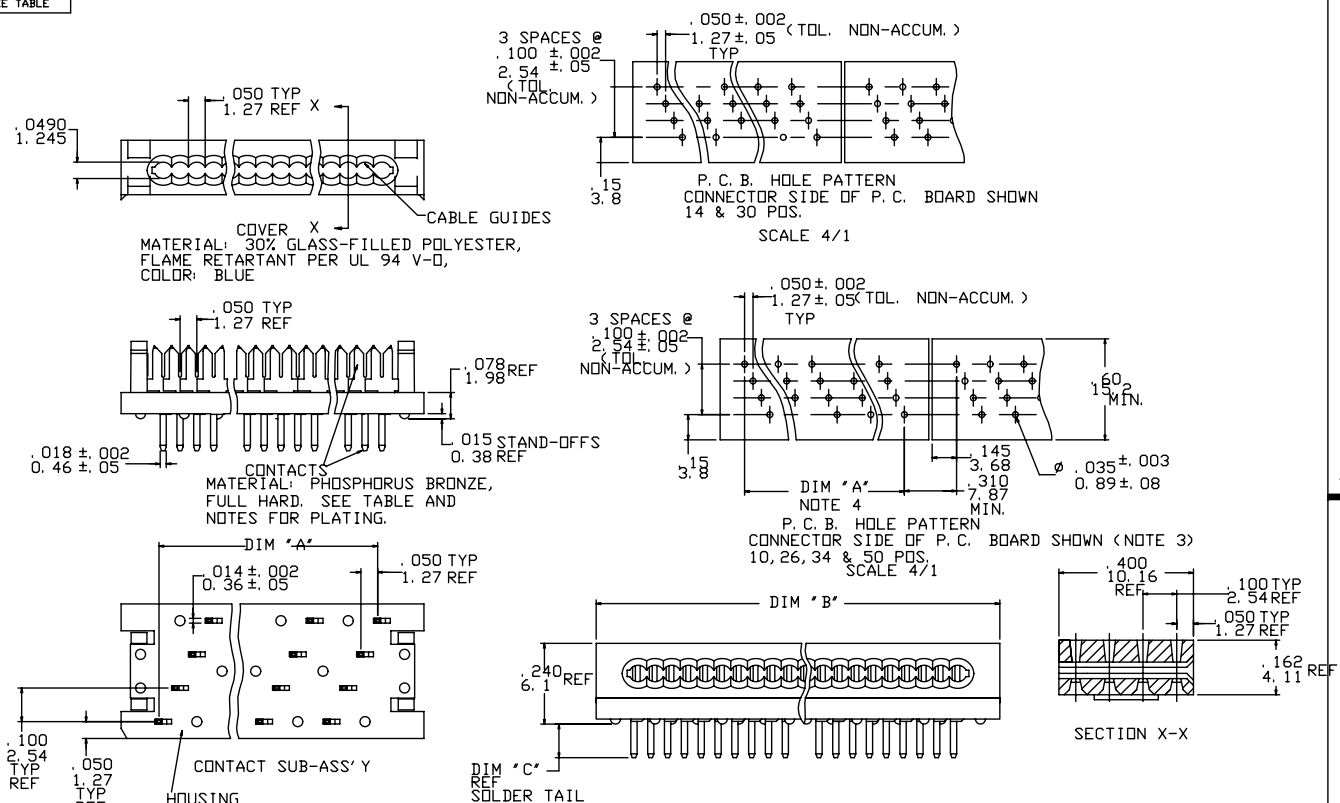


Tous droits strictement réservés. Reproduction ou communication o des tiers interdite sous quelque forme que ce soit sans autorisation écrite du propriétaire. Propriété de ©FCJ ELECTRONICS. Droits de reproduction FCJ ELECTRONICS INC.



All rights strictly reserved. Reproduction or issue to third parties in any form whatever is not permitted without written authority from the proprietor. Property of ©FCJ ELECTRONICS. Copyright FCJ ELECTRONICS INC.

PRODUCT NO.
SEE TABLE



form no. 7530-001-103

mat'l. code		tolerances unless otherwise specified		CUSTOMER COPY		FCJ www.fcjconnect.com	
ltr	ecm no	dr	date	linear	.XX ±.01	projection	title QUICKIE P.C.B. CONNECTOR 10,14,26,30,34, & 50 POS.
P	V11058	JM	6/12/91		.XXX ±.005	INCH/MM	
R	V50805	LSS	7/5/95	angles	.XXXX ±.0020		scale
S	N05-0123	ZC	5/9/05		0° ±2°	2.5:1	dwg no 65495
T	N07-0199	WG	08/27/07	dr	J.MUSTARD 6/12/91		code -
				engr	M.SMYK 6/12/91		sheet 1 of 2
				chr	W.FUNK 6/12/91		
				appd	M.SMYK 6/12/91		
sheet index	revision sheet	T	T				cage code 26
		1	2				Printed: Apr 12, 2014

PDM: Rev: T STATUS: Released


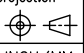
Tous droits strictement reserves. Reproduction ou communication a des tiers interdite sous quelque forme que ce soit sans autorisation écrite du propriétaire.
 Property of ©FCJ ELECTRONICS. Copyright FCJ ELECTRONICS INC. Droits de reproduction FCJ ELECTRONICS INC.

All rights strictly reserved. Reproduction or issue to third parties in any form whatever is not permitted without written authority from the proprietor.
 Property of ©FCJ ELECTRONICS. Copyright FCJ ELECTRONICS INC.

	NO. OF POS.	DIM "A"	DIM "B"	DIM "C" REF	SEE NOTE
65495-017(LF)	10	.450/11.43	.700/17.78	.100/2.54	1
-018(LF)					2
-019(LF)					1
-020(LF)					2
-021(LF)	26	1.250/31.75	1.500/38.10	.100/2.54	1
-022(LF)					2
-023(LF)					1
-024(LF)					2
-025(LF)	34	1.650/41.91	1.900/48.26	.100/2.54	1
-026(LF)					2
-027(LF)					1
-028(LF)					2
-029(LF)	50	2.450/62.23	2.700/68.58	.100/2.54	1
-030(LF)					2
-031(LF)					1
-032(LF)					2
-033(LF)	14	.650/16.51	.900/22.86	.100/2.54	1
-034(LF)					2
-035(LF)					1
-036(LF)					2
-037(LF)	30	1.450/36.83	1.700/43.18	.100/2.54	1
-038(LF)					2
-039(LF)					1
65495-040(LF)					

NOTES:

- 50u"/1.27uM MIN. Ni UNDERPLATE OVER ENTIRE TERMINAL. AND Au FLASH ON SOLDER TAIL ONLY.
- 65495-***: 150u"/3.81uM MIN. TIN/LEAD 93/7 OVER ENTIRE TERMINAL. 50u"/1.27uM MIN. Ni UNDERPLATE.
 65495-***LF: 150u"/3.81uM MIN. MATTE TIN OVER ENTIRE TERMINAL. 50u"/1.27uM MIN. Ni UNDERPLATE.
- SEE TA 247 FOR MORE INFORMATION.
- PATTERN SHOWN FOR CENTER TEN CONTACTS IS TYPICAL FOR ALL CONNECTOR LENGTHS, EXCEPT 14 & 30 POSITIONS.
- SUB-ASSEMBLY & COVER PACKED SEPARATELY.
- THE HOUSING OF XXXXX-XYLLF WILL WITHSTAND EXPOSURE TO 260°C PEAK TEMPERATURE FOR 10 SECONDS IN A WAVE SOLDER PROCESS.

mat'l. code		tolerances unless otherwise specified		CUSTOMER COPY	 www.fcjconnect.com		
ltr	ecn no	dr	date	linear		projection	
T				.XX ±.01/.0±.3	 INCH/MM		
				.XXX ±.005/.00±.13		title	
				.XXX ±.0020/.000±.051	QUICKIE P.C.B CONNECTOR		
				angles 0° ±2°	10,14,26,30,34,& 50 POS.		
				dr J.MUSTARD 6/11/91	product family		
				enrg M.SMYK 6/11/91	size		
				chr W.FUNK 6/11/91	dwg no		
				appd M.SMYK 6/11/91	scale		
					1:1		
sheet	revision	T			A	65495	code
index	sheet	2					sheet
							2 of