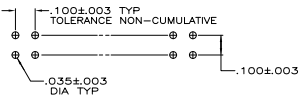
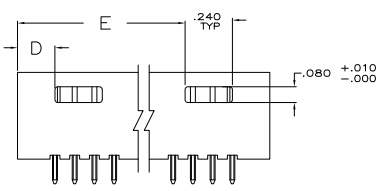
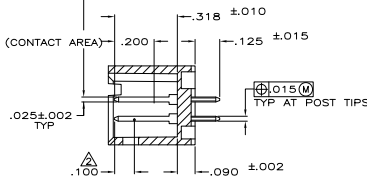
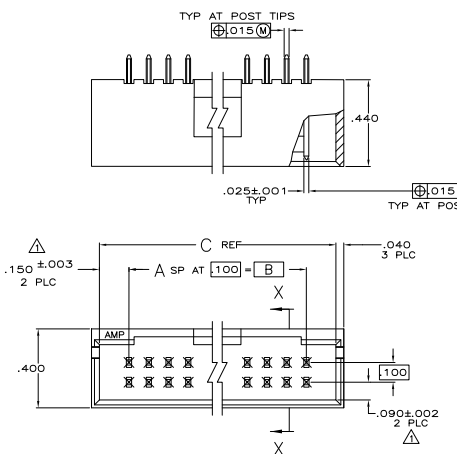


- △ THE NOTED DIMENSIONS APPLY AT THE INTERSECTION OF THE POST AND HOUSING
- △ POINT OF MEASUREMENT FOR PLATING THICKNESS
- △ MATERIAL: HOUSING- FLAME RETARDANT THERMOPLASTIC, COLOR- BLACK
 POSTS- PHOS BRONZE
- △ FINISH: POSTS- .00015 GOLD IN CONTACT AREA,
 .000100-.000200 MATTE TIN-LEAD ON SOLDER TAIL,
 ALL OVER .000050 NICKEL
- △ FINISH: POSTS- .000015 GOLD IN CONTACT AREA,
 .000100-.000200 MATTE TIN ON SOLDER TAIL,
 ALL OVER .000050 NICKEL
- △ OBSOLETE PARTS: OBSOLETE CIS STREAMLINING PER D.RENAUD/D.SINISI

REV	DATE	DESCRIPTION	BY	CHK	APP
AD	00				
K2		REVISED PER EDD-11-004587			



REV	DATE	DESCRIPTION	BY	CHK	APP
3,490	.190	3,800 3,500	35	72	8-102619-4
3,390	.190	3,700 3,400	34	70	8-102619-3
3,290	.190	3,600 3,300	33	68	8-102619-2
3,190	.190	3,500 3,200	32	66	8-102619-1
3,090	.190	3,400 3,100	31	64	8-102619-0
2,990	.190	3,300 3,000	30	62	7-102619-9
2,890	.190	3,200 2,900	29	60	7-102619-8
2,790	.190	3,100 2,800	28	58	7-102619-7
2,690	.190	3,000 2,700	27	56	7-102619-6
2,590	.190	2,900 2,600	26	54	7-102619-5
2,490	.190	2,800 2,500	25	52	7-102619-4
2,390	.190	2,700 2,400	24	50	7-102619-3
2,290	.190	2,600 2,300	23	48	7-102619-2
2,190	.190	2,500 2,200	22	46	7-102619-1
2,090	.190	2,400 2,100	21	44	7-102619-0
1,990	.190	2,300 2,000	20	42	6-102619-9
1,890	.190	2,200 1,900	19	40	6-102619-8
1,790	.190	2,100 1,800	18	38	6-102619-7
1,690	.190	2,000 1,700	17	36	6-102619-6
1,590	.190	1,900 1,600	16	34	6-102619-5
1,490	.190	1,800 1,500	15	32	6-102619-4
1,390	.190	1,700 1,400	14	30	6-102619-3
1,290	.190	1,600 1,300	13	28	6-102619-2
1,190	.190	1,500 1,200	12	26	6-102619-1
1,090	.190	1,400 1,100	11	24	6-102619-0
.990	.190	1,300 1,000	10	22	5-102619-9
.890	.190	1,200 .900	9	20	5-102619-8
---	.490	1,100 .800	8	18	5-102619-7
---	.390	1,000 .700	7	16	5-102619-6
---	.290	.800 .500	5	12	5-102619-5
---	.290	.700 .400	4	10	5-102619-4
---	.190	.600 .300	3	8	5-102619-3
---	.190	.500 .200	2	6	5-102619-2
---	.190	.500 .200	2	6	5-102619-1
3,490	.190	3,800 3,500	35	72	3-102619-4
3,390	.190	3,700 3,400	34	70	3-102619-3
3,290	.190	3,600 3,300	33	68	3-102619-2
3,190	.190	3,500 3,200	32	66	3-102619-1
3,090	.190	3,400 3,100	31	64	3-102619-0
2,990	.190	3,300 3,000	30	62	2-102619-9
2,890	.190	3,200 2,900	29	60	2-102619-8
2,790	.190	3,100 2,800	28	58	2-102619-7
2,690	.190	3,000 2,700	27	56	2-102619-6
2,590	.190	2,900 2,600	26	54	2-102619-5
2,490	.190	2,800 2,500	25	52	2-102619-4
2,390	.190	2,700 2,400	24	50	2-102619-3
2,290	.190	2,600 2,300	23	48	2-102619-2
2,190	.190	2,500 2,200	22	46	2-102619-1
2,090	.190	2,400 2,100	21	44	2-102619-0
1,990	.190	2,300 2,000	20	42	1-102619-9
1,890	.190	2,200 1,900	19	40	1-102619-8
1,790	.190	2,100 1,800	18	38	1-102619-7
1,690	.190	2,000 1,700	17	36	1-102619-6
1,590	.190	1,900 1,600	16	34	1-102619-5
1,490	.190	1,800 1,500	15	32	1-102619-4
1,390	.190	1,700 1,400	14	30	1-102619-3
1,290	.190	1,600 1,300	13	28	1-102619-2
1,190	.190	1,500 1,200	12	26	1-102619-1
1,090	.190	1,400 1,100	11	24	1-102619-0
.990	.190	1,300 1,000	10	22	102619-9
.890	.190	1,200 .900	9	20	102619-8
---	.490	1,100 .800	8	18	102619-7
---	.390	1,000 .700	7	16	102619-6
---	.290	.800 .500	5	12	102619-5
---	.290	.700 .400	4	10	102619-4
---	.190	.600 .300	3	8	102619-3
---	.190	.500 .200	2	6	102619-2
---	.190	.500 .200	2	6	102619-1

△ SUPERCEDED BY 5-102619-7

FINISH	E	D	C	B	A	NO OF POSN	ASSEMBLY OF PART NUMBER

THIS DRAWING IS A CONTROLLED DOCUMENT. SEE TABLE

TE Connectivity
 HDR ASSY, MOD II, SHROUDED,
 4 SIDES, DBL ROW, VERTICAL,
 .100X100 CL WITH .025 SQ. POSTS

DATE: 00779
 REV: 102619
 SIZE: 4.1