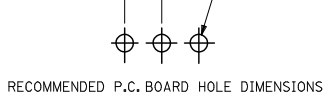
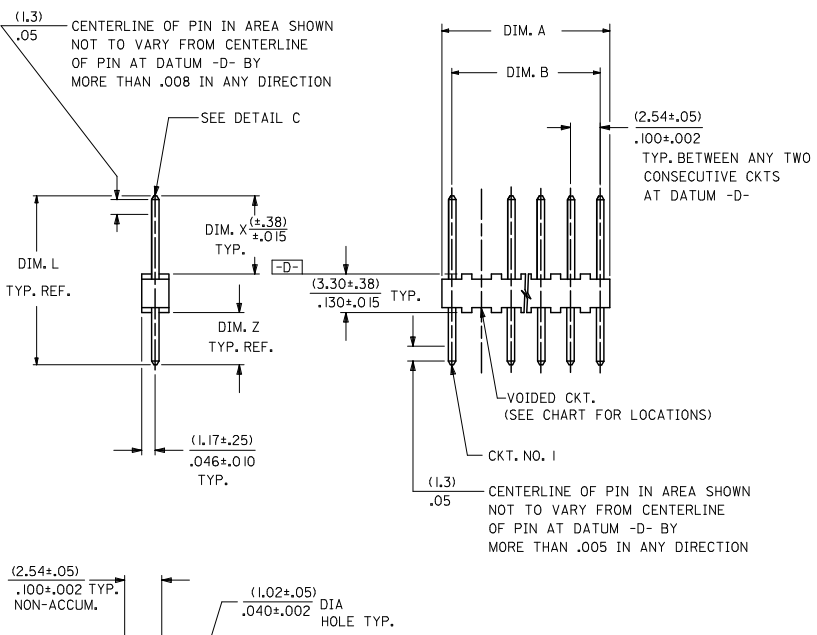


13 12 11 10 9 8 7 6 5 4 3 2 1



LEGEND

A-4380-N * * * * *

NO. OF CKTS. ↑

VOID LOCATION ↑

NO VOID=SEE 4030 SERIES DWG. WITH VOIDS=NO. CORRESPONDS TO CKT. NO. VOIDED.

MULT. VOIDS=START WITH 51 AND ARE ASSIGNED CONSECUTIVELY.

VERSION
LETTER CHANGES WHEN PIN NO. OR PRESS DIM. CHANGES.

PLATING CODE
PER SDES-88.

SECONDARY OPERATIONS	
CODE	PACKAGE
BLANK	BULK
	PER PK-4030-001

CKTS. NO. OF	DIM. B	DIM. A
2	(2.54 ± .05)	(4.83 ± .20)
	(.100 ± .002)	(.190 ± .008)
3	(5.08 ± .13)	(7.37 ± .20)
	(.200 ± .005)	(.290 ± .008)
4	(7.62 ± .13)	(9.91 ± .20)
	(.300 ± .005)	(.390 ± .008)
5	(10.16 ± .13)	(12.45 ± .20)
	(.400 ± .005)	(.490 ± .008)
6	(12.70 ± .15)	(14.99 ± .23)
	(.500 ± .006)	(.590 ± .009)
7	(15.24 ± .15)	(17.53 ± .23)
	(.600 ± .006)	(.690 ± .009)
8	(17.78 ± .15)	(20.07 ± .23)
	(.700 ± .006)	(.790 ± .009)
9	(20.32 ± .18)	(22.61 ± .25)
	(.800 ± .007)	(.890 ± .010)
10	(22.86 ± .18)	(25.15 ± .25)
	(.900 ± .007)	(.990 ± .010)
11	(25.40 ± .18)	(27.69 ± .25)
	(1.000 ± .007)	(1.090 ± .010)
12	(27.94 ± .20)	(30.23 ± .28)
	(1.100 ± .008)	(1.190 ± .011)
13	(30.48 ± .20)	(32.77 ± .28)
	(1.200 ± .008)	(1.290 ± .011)
14	(33.02 ± .20)	(35.31 ± .28)
	(1.300 ± .008)	(1.390 ± .011)
15	(35.56 ± .20)	(37.85 ± .28)
	(1.400 ± .008)	(1.490 ± .011)
16	(38.10 ± .20)	(40.39 ± .28)
	(1.500 ± .008)	(1.590 ± .011)
17	(40.64 ± .23)	(42.93 ± .30)
	(1.600 ± .009)	(1.690 ± .012)
18	(43.18 ± .23)	(45.47 ± .30)
	(1.700 ± .009)	(1.790 ± .012)
19	(45.72 ± .23)	(48.01 ± .30)
	(1.800 ± .009)	(1.890 ± .012)
20	(48.26 ± .23)	(50.55 ± .30)
	(1.900 ± .009)	(1.990 ± .012)
21	(50.80 ± .25)	(53.09 ± .33)
	(2.000 ± .010)	(2.090 ± .013)
22	(53.34 ± .25)	(55.63 ± .33)
	(2.100 ± .010)	(2.190 ± .013)
23	(55.88 ± .25)	(58.17 ± .33)
	(2.200 ± .010)	(2.290 ± .013)
24	(58.42 ± .25)	(60.71 ± .33)
	(2.300 ± .010)	(2.390 ± .013)
25	(60.96 ± .28)	(63.25 ± .36)
	(2.400 ± .011)	(2.490 ± .014)
26	(63.50 ± .28)	(65.79 ± .36)
	(2.500 ± .011)	(2.590 ± .014)
27	(66.04 ± .28)	(68.33 ± .36)
	(2.600 ± .011)	(2.690 ± .014)
28	(68.58 ± .28)	(70.87 ± .36)
	(2.700 ± .011)	(2.790 ± .014)

- NOTES:
1. MATERIAL: NYLON, UL 94V-0, COLOR: WHITE
 2. FINISH: 102: 0.00508/.000200 MIN TIN OVER 0.00254/.000100 MIN. COPPER
132: 0.00508/.000200 MIN TIN OVER 0.00508/.000200 MIN. COPPER
501: 0.00051/.000020 MIN GOLD OVER 0.00076/.000030 MIN. NICKEL
503: 0.00076/.000030 MIN GOLD OVER 0.00076/.000030 MIN. NICKEL
 3. PARTS CONFORM TO PRODUCT SPECIFICATION PS-10-07.
 4. PACKAGING: SEE LEGEND
 5. PINS MUST CONFORM TO SOLDERABILITY SPEC. SMES-152.
 6. PIN PUSH OUT FORCE: 2 LBS. MIN.
 7. PARTS ARE STACKABLE END TO END AND SIDE TO SIDE ON (2.54)/.100 CENTERS.
 8. THIS PART CONFORMS TO CLASS B REQUIREMENTS OF COSMETIC SPECIFICATION PS-45499-002.

OBsolete - NA122** EC NO. UCP2009-3089 DRAWN BY: 2009/10/12 CHKD BY: 2009/10/16 APPR: 2009/10/19	QUALITY SYMBOLS ▽=0 ▽=0	GENERAL TOLERANCES (UNLESS SPECIFIED)		DIMENSION STYLE		SCALE	DESIGN UNITS	THIRD ANGLE PROJECTION	
				MM/IN		---	INCH		
				DRAWN BY: SAMIEC		DATE: 1984/09/07		TITLE: KK HEADER	
				CHECKED BY: DS		DATE: 1984/09/07		2(2.54)/.100 CENTERS 4030 WITH VOIDS	
		APPROVED BY: KJA		DATE: 1984/09/07		MOLEX INCORPORATED			
		MATERIAL NO.:		DOCUMENT NO.:		SHEET NO. 1 OF 13			
		DRAFT WHERE APPLICABLE MUST REMAIN WITHIN DIMENSIONS		SEE CHART		SDA-4380			
		THIS DRAWING CONTAINS INFORMATION THAT IS PROPRIETARY TO MOLEX INCORPORATED AND SHOULD NOT BE USED WITHOUT WRITTEN PERMISSION							

1b_frame_C.P.M.E.T Rev. E 2006/04/15 12 11 10 9 8 7 6 5 4 3 2 1

		13	12	11	10	9	8	7	6	5	4	3	2	1							
		ENG. NO.	PIN NO.	DIM. L	DIM. X	DIM. Z								ENG. NO.	PIN NO.	DIM. L	DIM. X	DIM. Z			
		A-4380-NA102-*	2766-1(102)	(14.22) .560	(7.49) .295	(3.43) .135								A-4380-NZ102-*	2766-1(102)	(14.22) .560	(8.38) .330	(2.54) .100			
		A-4380-NA132-*	2766-1(132)	(14.22) .560	(7.49) .295	(3.43) .135								A-4380-NAA102-*	2766-40(102)	(23.80) .937	(10.26) .404	(10.26) .404			
		A-4380-NA501-*	2766-1(501)	(14.22) .560	(7.49) .295	(3.43) .135								A-4380-NAB102-*	2766-5(102)	(11.10) .437	(4.37) .172	(3.43) .135			
		A-4380-NA503-*	2766-1(503)	(14.22) .560	(7.49) .295	(3.43) .135								A-4380-NAC102-*	2766-1(102)	(14.22) .560	(9.70) .382	(1.22) .048			
		A-4380-NA122-*	2766-1(122)	(14.22) .560	(7.49) .295	(3.43) .135	OBSOLETE							A-4380-NAD503-*	2766-58(503)	(11.43) .450	(5.84) .230	(2.29) .090			
		A-4380-NAP102-*	2766-58(102)	(11.43) .450	(6.10) .240	(2.03) .080								A-4380-NAE102-*	4166-8(102)	(25.40) 1.000	(11.05) .435	(11.05) .435			
		A-4380-NC102-*	2766-3(102)	(17.45) .687	(11.05) .435	(3.10) .122								A-4380-NAF102-*	2766-10(102)	(9.65) .380	(3.43) .135	(2.92) .115			
		A-4380-NC501-*	2766-3(501)	(17.45) .687	(11.05) .435	(3.10) .122								A-4380-NAG102-*	4166-8(102)	(25.40) 1.000	(13.97) .550	(8.13) .320			
		A-4380-ND102-*	2766-1(102)	(14.22) .560	(10.92) .430	(.00) .000								A-4380-NAH102-*	2766-50(102)	(9.27) .365	(3.00) .118	(2.97) .117			
		A-4380-NE102-*	4166-30(102)	(30.48) 1.200	(23.80) .937	(3.30) .130								A-4380-NAJ102-*	2766-40(102)	(23.80) .937	(17.30) .681	(3.20) .126			
		A-4380-NF102-*	2766-39(102)	(12.70) .500	(9.07) .357	(.33) .013								A-4380-NAK102-*	2766-5(102)	(12.32) .485	(5.84) .230	(3.18) .125			
		A-4380-NG501-*	2766-52(501)	(14.61) .575	(8.13) .320	(3.18) .125								A-4380-NAL102-*	2766-3(102)	(16.51) .650	(10.46) .412	(2.74) .108			
		A-4380-NH102-*	2766-8(102)	(21.39) .842	(15.24) .600	(2.84) .112								A-4380-NAM102-*	2766-37(102)	(20.32) .800	(8.51) .335	(8.51) .335			
		A-4380-NJ102-*	2766-37(102)	(20.32) .800	(7.37) .290	(9.65) .380															
		A-4380-NK501-*	2766-13(501)	(19.05) .750	(12.57) .495	(3.18) .125															
		A-4380-NL102-*	4166-3(102)	(31.75) 1.250	(25.02) .985	(3.43) .135															
		A-4380-NM102-*	2766-33(102)	(8.26) .325	(3.18) .125	(1.78) .070															
		A-4380-NM513-*	VOIDED																		
		A-4380-NP102-*	2766-8(102)	(21.39) .842	(14.22) .560	(3.86) .152															
		A-4380-NR102-*	2766-59(102)	(16.94) .667	(10.92) .430	(2.72) .107															
		A-4380-NR501-*	2766-59(501)	(16.94) .667	(10.92) .430	(2.72) .107															
		A-4380-NS102-*	2766-27(102)	(11.99) .472	(5.08) .200	(3.61) .142															
		A-4380-NT102-*	2766-3(102)	(17.45) .687	(9.91) .390	(4.37) .172															
		A-4380-NV102-*	2766-2(102)	(30.48) 1.200	(23.80) .937	(3.38) .133															
		A-4380-NW102-*	4166-8(102)	(25.40) 1.000	(18.29) .720	(3.81) .150															
		A-4380-NY102-*	2766-1(102)	(14.22) .560	(9.07) .357	(1.85) .073															

SEE SHEET 1 EC NO. UCF2009-3089 DRAWN BY DRWNK1PPER CHECKED BY CHK0SS0USEK APPROVED BY APPR1ESMLTH	QUALITY SYMBOLS	GENERAL TOLERANCES (UNLESS SPECIFIED)		DIMENSION STYLE		SCALE	DESIGN UNITS	THIRD ANGLE PROJECTION	
	▽=0	4 PLACES	mm	MM/IN	DATE	TITLE			
	▽=0	3 PLACES	INCH	DRAWN BY	1984/09/07	KK HEADER			
		2 PLACES		CHECKED BY	1984/09/07	(2.54)/.100 CENTERS			
	1 PLACE			APPROVED BY	1984/09/07	4030 WITH VOIDS			
		ANGULAR ±1/2°		MATERIAL NO.		DOCUMENT NO.		SHEET NO.	
		DRAFT WHERE APPLICABLE MUST REMAIN WITHIN DIMENSIONS		SEE CHART		SDA-4380		2 OF *	
		THIS DRAWING CONTAINS INFORMATION THAT IS PROPRIETARY TO MOLEX INCORPORATED AND SHOULD NOT BE USED WITHOUT WRITTEN PERMISSION							

13 12 11 10 9 8 7 6 4380 4 3 2 1

A-4380-NAM102-*

PART NO.	ENG. NO.	VOID CKT.	PART NO.	ENG. NO.	VOID CKT.	PART NO.	ENG. NO.	VOID CKT.	PART NO.	ENG. NO.	VOID CKT.
22-24-2152	A-4380-15AM102-7	7									
22-24-2172	A-4380-17AM102-7	7									
22-24-2242	A-4380-24AM102-51	9,18									
022-24-2153	A-4380-15AM102-6	6									

COLUMN NO. 1 CONT. IN COLUMN NO. SHEET NO. COLUMN NO. 2 CONT. IN COLUMN NO. SHEET NO. COLUMN NO. 3 CONT. IN COLUMN NO. SHEET NO. COLUMN NO. 4 CONT. IN COLUMN NO. SHEET NO.

SEE SHEET I	SEE SHEET I	<small>DIMENSIONS SHOWN METRIC INCH</small> <small>UNLESS OTHERWISE SPECIFIED</small> <small>TOLERANCES ANGULAR ± 1/2°</small> <table border="1"> <tr> <td></td> <td>INCH</td> <td>METRIC</td> </tr> <tr> <td>3 PLACE</td> <td>± .005</td> <td>---</td> </tr> <tr> <td>2 PLACE</td> <td>± .01</td> <td>± 0.13</td> </tr> <tr> <td>1 PLACE</td> <td>---</td> <td>± 0.25</td> </tr> </table> <small>DRAFT WHERE APPLICABLE MUST REMAIN WITHIN DIMENSIONS</small>		INCH	METRIC	3 PLACE	± .005	---	2 PLACE	± .01	± 0.13	1 PLACE	---	± 0.25	<small>REVISIONS</small> <small>DATE</small> 4/6/92 <small>REV.</small> KK
	INCH		METRIC												
3 PLACE	± .005		---												
2 PLACE	± .01		± 0.13												
1 PLACE	---		± 0.25												
SEE SHEET I	SEE SHEET I														
SEE SHEET I	SEE SHEET I														
SEE SHEET I	T2 SEE SHEET I														
SEE SHEET I	T1 SEE SHEET I														
SEE SHEET I	S7 SEE SHEET I														
SEE SHEET I	S6 SEE SHEET I														
LTR.	REVISIONS	LTR.	REVISIONS												

13 12 11 10 9 8 7 6 5 4 3 2 1