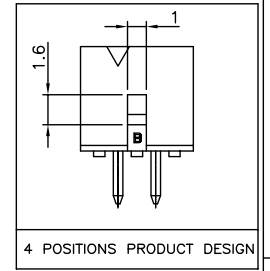
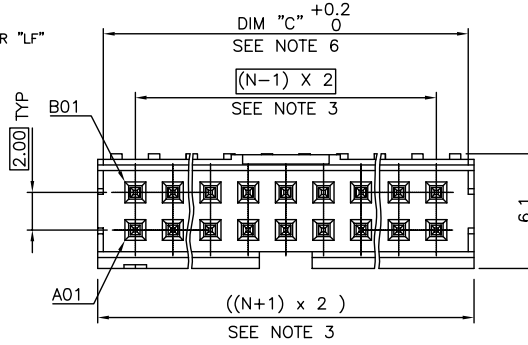


PRODUCT NUMBER  
98414-XXX-XX-XXXLF

PLATING  
S = 0.38µm GOLD/GXT ON CONTACT AREA  
3.81µm TIN LEAD ON TAIL  
G = 0.76µm GOLD/GXT ON CONTACT AREA  
3.81µm TIN LEAD ON TAIL  
F = GOLD FASH ON CONTACT AREA  
3.81µm TIN LEAD ON TAIL

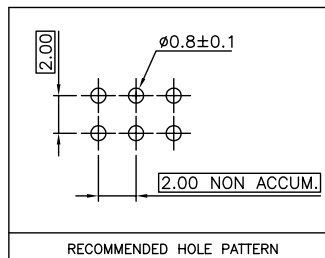
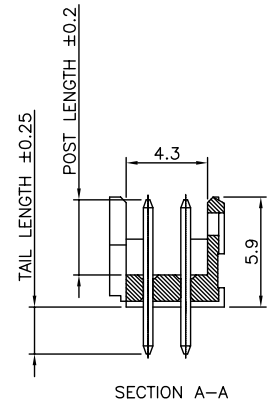
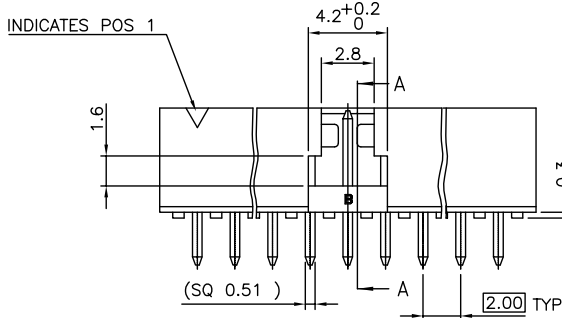
WHEN REQUIRED, ADD SUFFIX LETTER "LF" INDICATES THE PRODUCT IS RoHS COMPATIBLE, SEE NOTE 8  
POLARIZATION, SEE NOTE 7  
PACKAGING, SEE NOTE 5  
TOTAL NB OF POSITIONS, 04 TO 50 POS  
COLOR OPTION NOTE 1

PIN STYLE	POST LENGTH	TAIL LENGTH
06	4.00	2.50
08	4.00	3.10
10	4.00	3.70



NOTES:

- MATERIAL HOUSING: HIGH TEMP. THERMOPLASTIC UL-94VO  
- = STANDARD COLOR CREAM  
B = OPTIONAL COLOR BLACK
- MATERIAL TERMINAL: COPPER ALLOY
- TO DETERMINE DIMENSIONS:  
N = NUMBER OF POSITIONS PER ROW
- 7N MIN. PIN RETENTION IN EITHER DIRECTION.
- PACKAGING:  
= PLASTIC BOX  
- = PLASTIC BOX WHEN POLARISATION FEATURE APPLICABLE  
U = TUBE AVAILABLE FROM 06 TO 50 POS
- DIM "C" = (N x 2) + 1.4  
EXAMPLE: N = 7  
DIM "C" = (7 x 2) + 1.4 = 15.4 mm
- FOR POLARIZATION, SPECIFIED PIN  
EXAMPLE : A03 = ROW A, POSITION 03 TO OMIT PIN  
OMIT FROM PRODUCT NUMBER IF THIS FEATURE IS NOT APPLICABLE.
- RoHS COMPATIBLE PRODUCT SPECIFICATIONS
  - PLATING:  
- "LF" MEANS THE PRODUCT IS LEAD-FREE,  
2µm MINIMUM MATTE TIN OVER 1.27µm MINIMUM NICKEL UNDERPLATE.
  - MANUFACTURING PROCESS COMPATIBILITY  
- THE HOUSING WILL WITHSTAND EXPOSURE TO 260°C ±5°C SOLDER BATH TEMPERATURE FOR 5 SECONDS IN A WAVE SOLDER APPLICATION WITH A 1.6mm MIN THICK CIRCUIT BOARD.
  - LABELLING:  
- MEETS PACKAGING SPECS AS PER GS-14-920  
- THIS PRODUCT MEETS EUROPEAN DIRECTIVES AND OTHER COUNTRY REGULATIONS AS DISCRIBED IN GS-22-008.

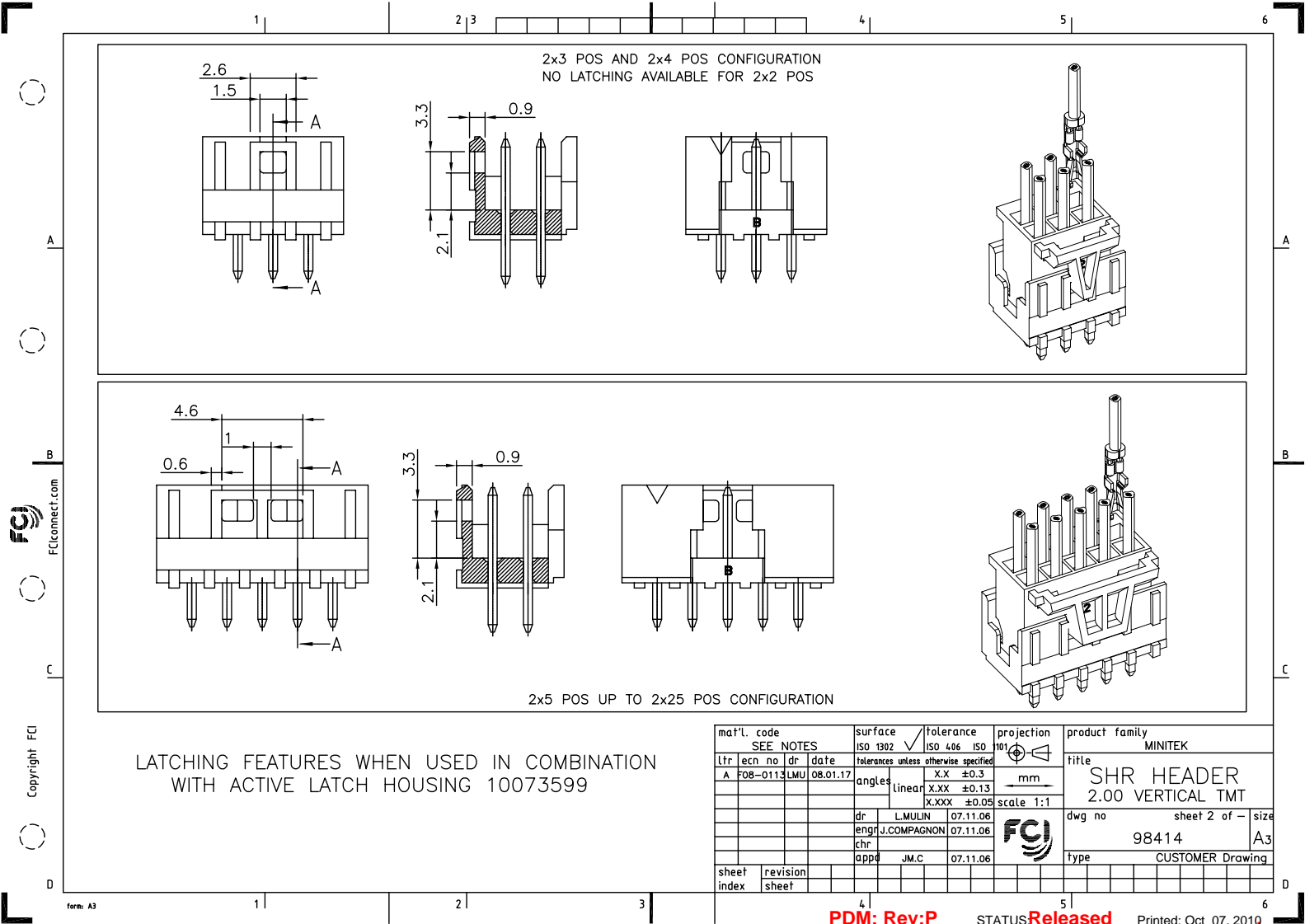


mat'l. code	surface	tolerance	projection	product family
SEE NOTES	ISO 1302 ✓	ISO 406 ISO 101		MINITEK
Ltr ecn no dr date	tolerances unless otherwise specified	angles	linear	mm
P F10-0215 JCO 10.09.16	X.X ±0.3	X.XXX ±0.05	scale 1:1	title
J F05-0278 LMU 05.10.19				SHR HEADER
K F06-0211 LMU 06.07.05 dr	L.MULIN 04.09.27			2.00 VERTICAL TMT
L F08-0113 LMU 08.01.17 eng	J.COMPAGNON 04.09.27			dwg no
M F08-0145 ELA 15.04.08 chr				98414
N F09-0211 JCO 09.11.03 app	J.M.C 04.09.27			sheet 1 of 2
sheet revision P A				A3
index sheet 1 2				size
				type
				CUSTOMER Drawing

PDM: Rev:P

STATUS Released

Printed: Oct 07, 2010



Copyright FCI  
FCIconnect.com

mat'l. code		surface	tolerance	projection	product family
SEE NOTES		ISO 1302	ISO 406 ISO	101	MINITEK
ltr	ec'n no	dr	date	tolerances unless otherwise specified	
A	F08-0113	LMU	08.01.17	angles	linear
				X.X	±0.3
				X.XXX	±0.13
				X.XXX	±0.05
				scale	1:1
dr	L.MULIN		07.11.06	FCI	
engr	J.COMPAGNON		07.11.06		
chr					
appd	J.M.C		07.11.06	dwg no	98414
sheet index	revision sheet			type	CUSTOMER Drawing
				sheet 2 of	size
					A3