

4

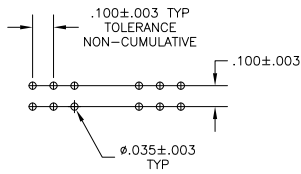
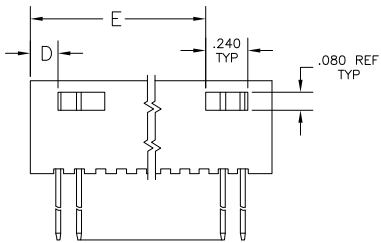
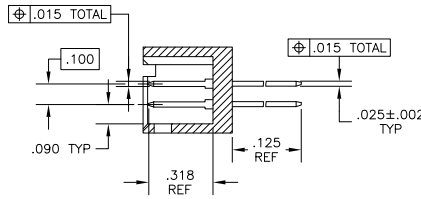
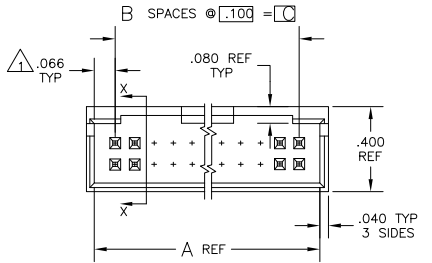
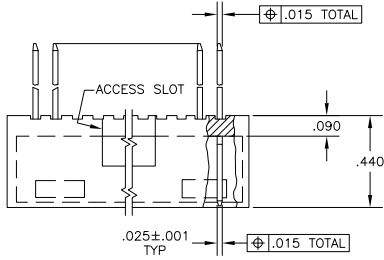
3

2

1

THIS DRAWING IS UNPUBLISHED. RELEASED FOR PUBLICATION. ALL RIGHTS RESERVED.

LOC	DIST	REVISIONS		
P	LTR	DESCRIPTION	DATE	BY
AD	00			
	R2	REVISED PER ECO-11-004587	11MAR11	RK HMR



RECOMMENDED HOLE LAYOUT

- 1 WILL ALSO MATE W/OTHER CONNECTORS WHICH ARE COMPATIBLE WITH THE .006 END DIM.
- 2 OBSOLETE PART NUMBER.
- 3 .000100-.000200 BRIGHT TIN-LEAD OVER .000050 NICKEL
- 4 .000100-.000200 BRIGHT TIN OVER .000050-.000100 NICKEL
- 5 PRELIMINARY PART.
- 6 .000100-.000200 MATTE TIN OVER .000050-.000100 NICKEL
- 7 OBSOLETE PARTS: OBSOLETE CIS STREAMLINING PER D.RENAUD/D.SINISI

THIS DRAWING IS A CONTROLLED DOCUMENT.		DATE	12 SEP 75	 TE Connectivity
DIMENSIONS:		DATE	12 SEP 75	
TOLERANCES UNLESS OTHERWISE SPECIFIED:		DATE	15 SEP 75	NAME
0 PLC ± .005		PRODUCT SPEC		HEATER ASSEMBY MOD II, .100 C/L
1 PLC ± .005		APPLICATION SPEC		.025 SQUARE POST, WITH DETENT
2 PLC ± .005		HEIGHT		SIZE
3 PLC ± .005		FINISH		CAGE CODE
4 PLC ± .005		SEE TABLE		DRAWING NO
ANGLES ± .005		CUSTOMER DRAWING		A2 00779 C-87589
MATERIAL: HSG GLASS FILLED NYLON CORE: BRASS CONTACT: PHOS BRONZE		SCALE		RESTRICTED TO
		3:1		1 of 2
				REV R2

4

3

2

1

THIS DRAWING IS UNPUBLISHED. RELEASED FOR PUBLICATION. ALL RIGHTS RESERVED.

LOC	DIST	REVISIONS					
AD	00	P	LR	DESCRIPTION	DATE	BY	APPD
-	-	-	-	SEE SHEET 1	-	-	-

FINISH	E	D	C	B	A	NO OF POSN.	PART NO.
-	.106	.200	2	.332	6	8	8-87589-6
-	.106	.300	3	.432	8	8	8-87589-5
3.506	.106	3.600	36	3.732	74	8	8-87589-3
3.406	.106	3.500	35	3.632	72	8	8-87589-2
3.306	.106	3.400	34	3.532	70	8	8-87589-1
3.206	.106	3.300	33	3.432	68	8	8-87589-0
3.106	.106	3.200	32	3.332	66	7	7-87589-9
3.006	.106	3.100	31	3.232	64	7	7-87589-8
2.906	.106	3.000	30	3.132	62	7	7-87589-7
2.806	.106	2.900	29	3.032	60	7	7-87589-6
2.706	.106	2.800	28	2.932	58	7	7-87589-5
2.606	.106	2.700	27	2.832	56	7	7-87589-4
2.506	.106	2.600	26	2.732	54	7	7-87589-3
2.406	.106	2.500	25	2.632	52	7	7-87589-2
2.306	.106	2.400	24	2.532	50	7	7-87589-1
2.206	.106	2.300	23	2.432	48	7	7-87589-0
2.106	.106	2.200	22	2.332	46	6	6-87589-9
2.006	.106	2.100	21	2.232	44	6	6-87589-8
1.906	.106	2.000	20	2.132	42	6	6-87589-7
1.806	.106	1.900	19	2.032	40	6	6-87589-6
1.706	.106	1.800	18	1.932	38	6	6-87589-5
1.606	.106	1.700	17	1.832	36	6	6-87589-4
1.506	.106	1.600	16	1.732	34	6	6-87589-3
1.406	.106	1.500	15	1.632	32	6	6-87589-2
1.306	.106	1.400	14	1.532	30	6	6-87589-1
1.206	.106	1.300	13	1.432	28	6	6-87589-0
1.106	.106	1.200	12	1.332	26	5	5-87587-9
1.006	.106	1.100	11	1.232	24	5	5-87589-8
.906	.106	1.000	10	1.132	22	5	5-87589-7
.806	.106	.900	9	1.032	20	5	5-87589-6
-	.406	.800	8	.932	18	5	5-87589-5
-	.306	.700	7	.832	16	5	5-87589-4
-	.306	.600	6	.732	14	5	5-87589-3
-	.206	.500	5	.632	12	5	5-87589-2
-	.206	.400	4	.532	10	5	5-87589-1

OBSOLETE

OBSOLETE

OBSOLETE

OBSOLETE

OBSOLETE

OBSOLETE

OBSOLETE

OBSOLETE

SUPERCEDED BY 6-87589-4

OBSOLETE

OBSOLETE

OBSOLETE

OBSOLETE

LOC	DIST	REVISIONS					
AD	00	P	LR	DESCRIPTION	DATE	BY	APPD
-	-	-	-	SEE SHEET 1	-	-	-
1.306	.106	1.400	14	1.532	30	3	3-87589-9
-	.406	.800	8	.932	18	3	3-87589-8
-	.306	.700	7	.832	16	3	3-87589-7
-	.106	.200	2	.332	6	3	3-87589-6
-	.106	.300	3	.432	8	3	3-87589-5
3.506	.106	3.600	36	3.732	74	3	3-87589-3
3.406	.106	3.500	35	3.632	72	3	3-87589-2
3.306	.106	3.400	34	3.532	70	3	3-87589-1
3.206	.106	3.300	33	3.432	68	3	3-87589-0
3.106	.106	3.200	32	3.332	66	2	2-87589-9
3.006	.106	3.100	31	3.232	64	2	2-87589-8
2.906	.106	3.000	30	3.132	62	2	2-87589-7
2.806	.106	2.900	29	3.032	60	2	2-87589-6
2.706	.106	2.800	28	2.932	58	2	2-87589-5
2.606	.106	2.700	27	2.832	56	2	2-87589-4
2.506	.106	2.600	26	2.732	54	2	2-87589-3
2.406	.106	2.500	25	2.632	52	2	2-87589-2
2.306	.106	2.400	24	2.532	50	2	2-87589-1
2.206	.106	2.300	23	2.432	48	2	2-87589-0
2.106	.106	2.200	22	2.332	46	1	1-87589-9
2.006	.106	2.100	21	2.232	44	1	1-87589-8
1.906	.106	2.000	20	2.132	42	1	1-87589-7
1.806	.106	1.900	19	2.032	40	1	1-87589-6
1.706	.106	1.800	18	1.932	38	1	1-87589-5
1.606	.106	1.700	17	1.832	36	1	1-87589-4
1.506	.106	1.600	16	1.732	34	1	1-87589-3
1.406	.106	1.500	15	1.632	32	1	1-87589-2
1.306	.106	1.400	14	1.532	30	1	1-87589-1
1.206	.106	1.300	13	1.432	28	1	1-87589-0
1.106	.106	1.200	12	1.332	26	87587	87587-9
1.006	.106	1.100	11	1.232	24	87589	87589-8
.906	.106	1.000	10	1.132	22	87589	87589-7
.806	.106	.900	9	1.032	20	87589	87589-6
-	.406	.800	8	.932	18	87589	87589-5
-	.306	.700	7	.832	16	87589	87589-4
-	.306	.600	6	.732	14	87589	87589-3
-	.206	.500	5	.632	12	87589	87589-2
-	.206	.400	4	.532	10	87589	87589-1

THIS DRAWING IS A CONTROLLED DOCUMENT. DWN 12 SEP 75

TE Connectivity

HEADERS ASSEMBLY MOD II, .100 C/L .025 SQUARE POST, WITH DETENT

SIZE: CASE CODE: DRAWING NO: A2 00779 C-87589

CUSTOMER DRAWING

SCALE: 1:1 SHEET 2 of 2 REV R2