

PRODUCT NUMBER
71918-YXXLF

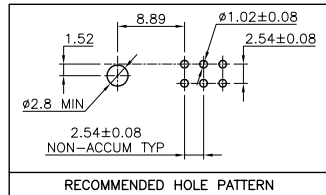
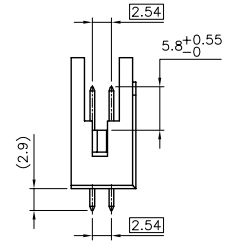
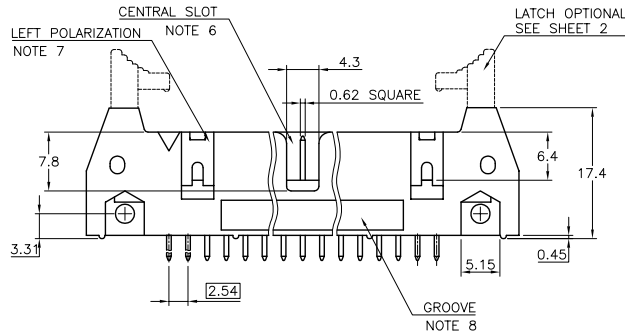
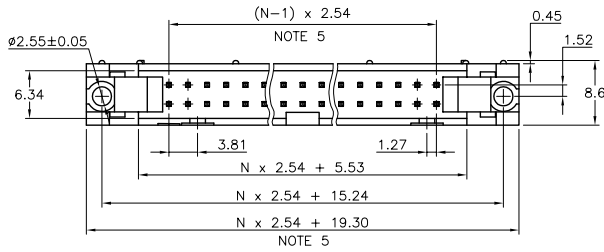
WHEN REQUIRED, ADD SUFFIX LETTER "LF"
INDICATES THE PRODUCT IS RoHS
COMPATIBLE, SEE NOTE 10

TOTAL NB OF POSITIONS, SEE SHEET 2

LATCHING
0= WITHOUT LATCH
1= STANDARD LATCH
2= LOW PROFILE LATCH

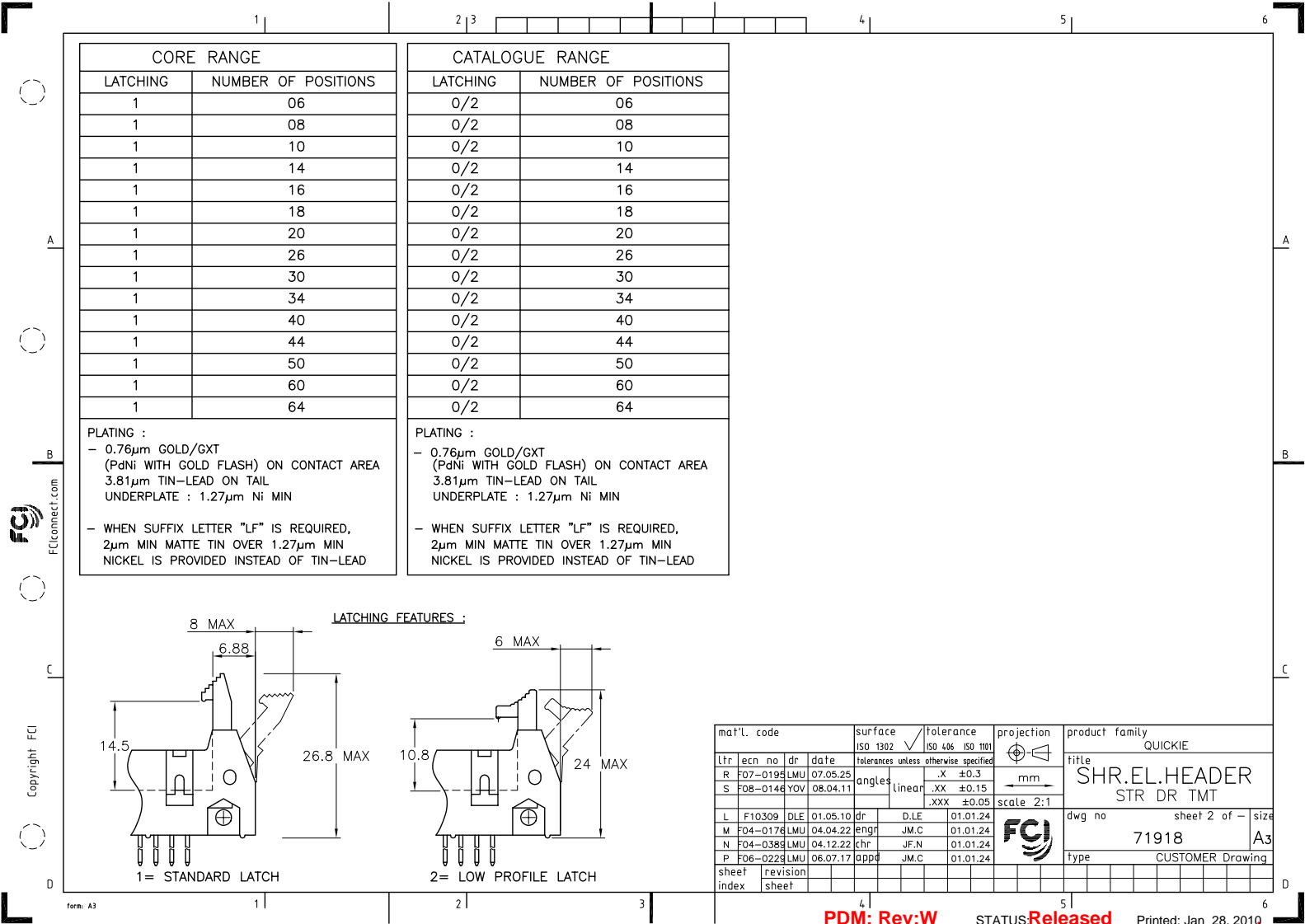
NOTES:

- 1 - HOUSING MAT'L : GLASS FILLED THERMOPLASTIC. UL94V-0 COLOR: GREY
- 2 - PIN MATERIAL : PHOSPHOR BRONZE
- 3 - PRODUCT PACKAGED IN TUBES
- 4 - 40N MIN LATCH RETENTION FORCE AT FIRST EXTRACTION
- 5 - TO DETERMINE DIMENSIONS :
N = NUMBER OF POSITIONS PER ROW
EXAMPLE : 8 POS N x 2.54 = 20.32mm
- 6 - NO CENTRAL SLOT ON POSITIONS 6 & 8
- 7 - NO LEFT POLARIZATION ON POSITIONS 06, 08, 10, 14.
- 8 - NO GROOVE ON POSITIONS 06, 08, 10, 14, 30, 34
- 9 - 4.5mm SOLDER TAIL
ORDER 71918-4XX (WITH STANDARD LATCH ONLY)
- 10 - RoHS COMPATIBLE PRODUCT SPECIFICATIONS
 - a - PLATING:
- "LF" MEANS THE PRODUCT IS LEAD-FREE,
2µm MINIMUM MATTE TIN OVER 1.27µm
MINIMUM NICKEL UNDERPLATE.
 - b - MANUFACTURING PROCESS COMPATIBILITY
- THE HOUSING WILL WITHSTAND EXPOSURE TO
260°C ±5°C SOLDER BATH TEMPERATURE FOR
5 SECONDS IN A WAVE SOLDER APPLICATION
WITH A 1.6mm MIN THICK CIRCUIT BOARD.
 - c - LABELING:
- MEETS PACKAGING SPECS AS PER GS-14-920
 - d - LEGAL STATEMENT: SEE GS-22-008.



mat'l. code		surface	tolerance	projection	product family
SEE NOTES		ISO 1302	ISO 406 ISO 1101	QUICKIE	
ltr	ecn no	dr	date	tolerances unless otherwise specified	title
R	F04-0198	LMU	04.05.28	angles linear .X ±0.3	SHR.EL.HEADER
S	F04-0389	LMU	04.12.20	.XXX ±0.13	STR DR TMT
T	F06-0229	LMU	06.07.17	.XXX ±0.05	scale 2:1
U	F07-0195	LMU	07.05.25	dr D.I.E	01.01.24
V	F08-0146	YOV	08.04.11	engd J.M.C	01.01.24
W	F09-0232	LMU	09.12.15	chr J.F.N	01.01.24
				appd J.M.C	01.01.24
sheet index	revision sheet	W	S		
	1	2			





CORE RANGE	
LATCHING	NUMBER OF POSITIONS
1	06
1	08
1	10
1	14
1	16
1	18
1	20
1	26
1	30
1	34
1	40
1	44
1	50
1	60
1	64

CATALOGUE RANGE	
LATCHING	NUMBER OF POSITIONS
0/2	06
0/2	08
0/2	10
0/2	14
0/2	16
0/2	18
0/2	20
0/2	26
0/2	30
0/2	34
0/2	40
0/2	44
0/2	50
0/2	60
0/2	64

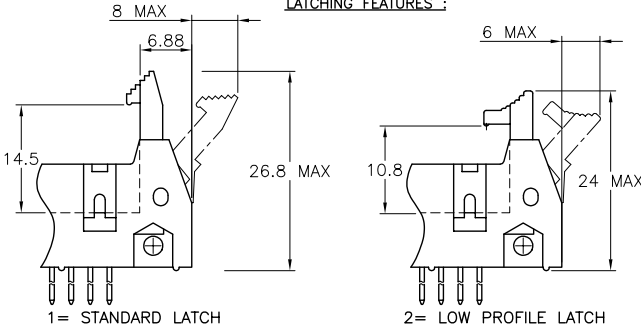
PLATING :
 - 0.76µm GOLD/GXT
 (PdNi WITH GOLD FLASH) ON CONTACT AREA
 3.81µm TIN-LEAD ON TAIL
 UNDERPLATE : 1.27µm Ni MIN

- WHEN SUFFIX LETTER "LF" IS REQUIRED,
 2µm MIN MATTE TIN OVER 1.27µm MIN
 NICKEL IS PROVIDED INSTEAD OF TIN-LEAD

PLATING :
 - 0.76µm GOLD/GXT
 (PdNi WITH GOLD FLASH) ON CONTACT AREA
 3.81µm TIN-LEAD ON TAIL
 UNDERPLATE : 1.27µm Ni MIN

- WHEN SUFFIX LETTER "LF" IS REQUIRED,
 2µm MIN MATTE TIN OVER 1.27µm MIN
 NICKEL IS PROVIDED INSTEAD OF TIN-LEAD

LATCHING FEATURES :



mat'l. code		surface	tolerance	projection	product family
		ISO 1302	ISO 406 ISO 1101		QUICKIE
Ltr	ecn no	dr	date	tolerances unless otherwise specified	title
R	F07-0195	LMU	07.05.25	angles linear .X ±0.3	SHR.EL.HEADER
S	F08-0146	YQV	08.04.11	.XX ±0.15 .XXX ±0.05	STR DR TMT
				scale 2:1	dwg no
					71918
				sheet 2 of -	size
				type	A3
				CUSTOMER Drawing	
sheet index	revision sheet				