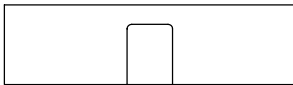
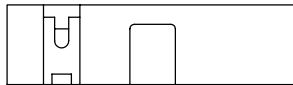




PRODUCT NUMBER  
SEE TABLE



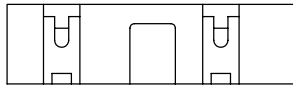
2 X 5  
STYLE A



2 X 7  
STYLE C



2 X 5  
STYLE B



2 X 8 THRU 2 X 30  
STYLE D



STYLE E

NOTES:

- 1) SAME POSITION TOLERANCE APPLIES TO BOTH ENDS OF PINS.
- 2) MOLDING MATERIAL: GLASS-FILLED POLYESTER, FLAME RETARDANT PER UL 94 V-0, COLOR: BLUE.
3. 1° MAX. DRAFT PERMISSIBLE ON ALL SURFACES.
4. 4 LBS./1.8 KG MIN. TERMINAL PULL-OUT FORCE.
- 5) TERMINAL MATERIAL: PHOSPHORUS BRONZE.
- 6) MOLDING MATERIAL: GLASS FILLED POLYESTER, FLAME RETARDANT PER UL 94V-0, COLOR - BLACK.
- 7) MOLDING MATERIAL: GLASS FILLED POLYESTER, FLAME RETARDANT PER UL 94V-0, COLOR - GREY.
- 8) PART NUMBERS WITH "R" FOLLOWING THE PART NUMBER (EXAMPLE 66506-326 R) HAS RETENTION. (ONLY PARTS WITH .105, .120, AND .150 ROUND OR SQUARE TAILS CAN HAVE RETENTION.) LOCATION IS MANUFACTURER'S OPTION.  
FOR ROUND PIN CONNECTORS:  
15 LBS MAX INSERTION AND .25 LB MIN RETENTION FORCE WHEN USED IN .035±.003 DIA HOLES AND .062/1.57 THICK PC BOARD.  
FOR SQUARE PIN CONNECTORS:  
15 LBS MAX INSERTION AND .5 LB MIN RETENTION FORCE WHEN USED IN .040±.003 DIA HOLES AND .062/1.57 THICK PC BOARD.
- 9) PART NUMBERS WITH "T" FOLLOWING PART NUMBER (EXAMPLE 66506-068 T IS PACKED IN TUBES.) (CALL PRODUCT MANAGER FOR AVAILABILITY.)
10. SEE 68751 FOR LATCHES.
- 11) MAY BE ORDERED WITH "G" PACK PACKAGING BY ADDING "G" TO DASH NUMBER.
- 12) ADD "LF" SUFFIX AT THE END OF PART NUMBER FOR LEAD FREE OPTION & PART NUMBERS WITH "LF" SUFFIX ADDED IN THE TABLE ARE LEAD FREE.
- 13) IF "LF" P/N THE PRODUCT MEETS EUROPEAN UNION DIRECTIVES AND OTHER COUNTRY REGULATION AS DESCRIBED IN GS-22-008.
14. THE HOUSING WILL WITHSTAND EXPOSURE TO 260°C PEAK TEMPERATURE FOR 15 SECONDS IN A WAVE SOLDER APPLICATION WITH A 1.5mm MINIMUM THICK CIRCUIT BOARD. SEE APPLICATION NOTES/PROCEDURES IF THEY ARE AVAILABLE.
- 15) \*THIS PRODUCT HAS 100% TIN PLATING IN THE INTERFACE AND HAS NOT BEEN TESTED FOR WHISKER GROWTH IN ALL INTERCONNECT ENVIRONMENTS.\*
- 16) PLATING OPTIONS:  
MAY BE EITHER GOLD OR GXT PLATED AT MANUFACTURER'S OPTION.

mat'l. code		surface	tolerance	projection	product family
AJ		ISO 1302	ISO 406 ISO 1101		QUICKIE
lfr		tolerances unless otherwise specified		title	
ecn	no	angles	Linear	HEATER QUICKIE SLIM LINE	
dr	date	0m2t	0.01/0.03 0.05/0.13 0.001/0.002/0.004/0.061	VERTICAL 4 WALL	
enr		scale 1:1		dwg no	
chr		FCI		sheet 2 of 10 size	
appd		M. SMYK 1/25/95		66506	
sheet		revision		type	
index	sheet			Product Customer Drawing	

PRODUCT NUMBER NOTE 8, 9 & 12	SIZE	STYLE	DIM A	DIM B	DIM C	DIM J	PIN PLATING (NOTE 16)	PIN TYPE	PLASTIC MATERIAL
66506-001	2 X 5	A	.78/19.8	.72/18.3	.400/10.16	.105/2.67	30u"/0.76u Au OR GXT OVER 50u"/1.27u Ni	RD	NOTE 2
-002						.150/3.81	30u"/0.76u Au OR GXT OVER 50u"/1.27u Ni	RD	
-003						.675/17.15	30u"/0.76u Au OR GXT OVER 50u"/1.27u Ni	SQ	
-004						.105/2.67	120/200u* TIN LEAD	SQ	
-004LF						.105/2.67	100/160u* TIN	SQ	
-005						.150/3.81	120/200u* TIN LEAD	SQ	
-005LF						.150/3.81	100/160u* TIN	SQ	
-006						.675/17.15	120/200u* TIN LEAD	SQ	
-006LF	2 X 5	A	.78/19.8	.72/18.3	.400/10.16	.675/17.15	100/160u* TIN	SQ	
-007	2 X 10	D	1.28/32.5	1.22/31.0	.900/22.86	.105/2.67	30u"/0.76u Au OR GXT OVER 50u"/1.27u Ni	RD	
-008						.150/3.81	30u"/0.76u Au OR GXT OVER 50u"/1.27u Ni	RD	
-009						.675/17.15	30u"/0.76u Au OR GXT OVER 50u"/1.27u Ni	SQ	
-010						.105/2.67	120/200u* TIN LEAD	SQ	
-010LF						.105/2.67	100/160u* TIN	SQ	
-011						.150/3.81	120/200u* TIN LEAD	SQ	
-011LF						.150/3.81	100/160u* TIN	SQ	
-012						.675/17.15	120/200u* TIN LEAD	SQ	
-012LF	2 X 10		1.28/32.5	1.22/31.0	.900/22.86	.675/17.15	100/160u* TIN	SQ	
-013	2 X 13		1.58/40.1	1.52/38.6	1.200/30.48	.105/2.67	30u"/0.76u Au OR GXT OVER 50u"/1.27u Ni	RD	
-014						.150/3.81	30u"/0.76u Au OR GXT OVER 50u"/1.27u Ni	RD	
-015						.675/17.15	30u"/0.76u Au OR GXT OVER 50u"/1.27u Ni	SQ	
-016						.105/2.67	120/200u* TIN LEAD	SQ	
-016LF						.105/2.67	100/160u* TIN	SQ	
-017						.150/3.81	120/200u* TIN LEAD	SQ	
-017LF						.150/3.81	100/160u* TIN	SQ	
-018						.675/17.15	120/200u* TIN LEAD	SQ	
-018LF	2 X 13		1.58/40.1	1.52/38.6	1.200/30.48	.675/17.15	100/160u* TIN	SQ	
-019	2 X 17		1.98/50.3	1.92/48.8	1.600/40.64	.105/2.67	30u"/0.76u Au OR GXT OVER 50u"/1.27u Ni	RD	
-020						.150/3.81	30u"/0.76u Au OR GXT OVER 50u"/1.27u Ni	RD	
-021						.675/17.15	30u"/0.76u Au OR GXT OVER 50u"/1.27u Ni	SQ	
-022						.105/2.67	120/200u* TIN LEAD	SQ	
-022LF						.105/2.67	100/160u* TIN	SQ	
-023						.150/3.81	120/200u* TIN LEAD	SQ	
-023LF						.150/3.81	100/160u* TIN	SQ	
-024						.675/17.15	120/200u* TIN LEAD	SQ	
66506-024LF	2 X 17	D	1.98/50.3	1.92/48.8	1.600/40.64	.675/17.15	100/160u* TIN	SQ	NOTE 2

mat'l. code	surface ISO 1302	tolerance ISO 406 ISO 1101	projection	product family QUICKIE
lfr	ecn no	dr	date	title
AJ				HEADER QUICKIE SLIM LINE VERTICAL 4 WALL
	angles	linear	0.01/0.03 0.05/0.13	INCH/MM
	Ort2?			scale 1:1
	dr	L. SANDERS	1/25/95	dwg no
	enrg	M. SMYK	1/25/95	sheet 3 of 10 size
	chr	J. ROMBERGER	1/25/95	66506
	appd	M. SMYK	1/25/95	A3
sheet index	revision sheet			type Product Customer Drawing

form: A3

PDM:4Rev:AJ

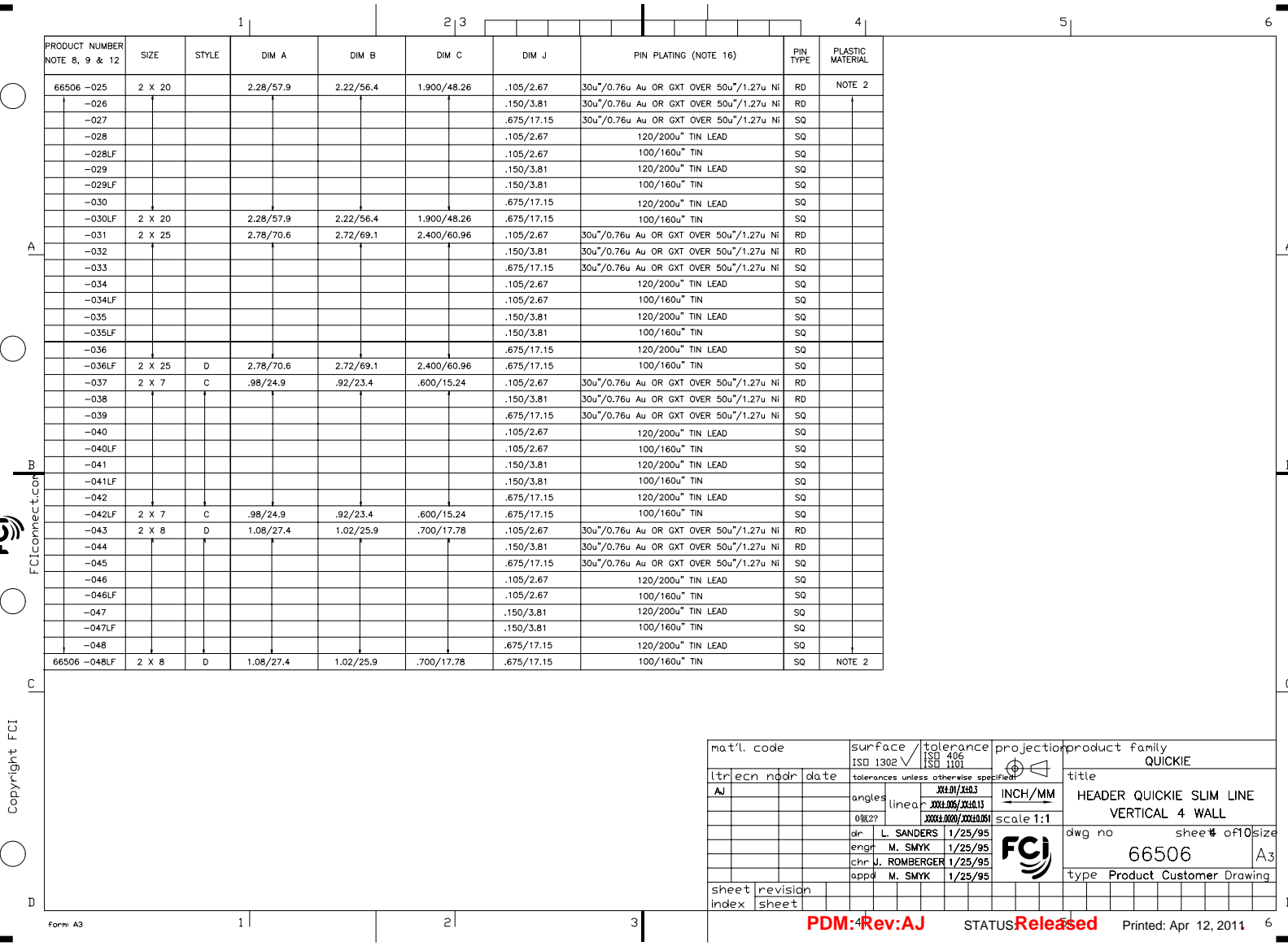
STATUS Released

Printed: Apr 12, 2011

6

PRODUCT NUMBER NOTE 8, 9 & 12	SIZE	STYLE	DIM A	DIM B	DIM C	DIM J	PIN PLATING (NOTE 16)	PIN TYPE	PLASTIC MATERIAL
66506 -025	2 X 20		2.28/57.9	2.22/56.4	1.900/48.26	.105/2.67	30u"/0.76u Au OR GXT OVER 50u"/1.27u Ni	RD	NOTE 2
-026						.150/3.81	30u"/0.76u Au OR GXT OVER 50u"/1.27u Ni	RD	
-027						.675/17.15	30u"/0.76u Au OR GXT OVER 50u"/1.27u Ni	SQ	
-028						.105/2.67	120/200u" TIN LEAD	SQ	
-028LF						.105/2.67	100/160u" TIN	SQ	
-029						.150/3.81	120/200u" TIN LEAD	SQ	
-029LF						.150/3.81	100/160u" TIN	SQ	
-030						.675/17.15	120/200u" TIN LEAD	SQ	
-030LF	2 X 20		2.28/57.9	2.22/56.4	1.900/48.26	.675/17.15	100/160u" TIN	SQ	
-031	2 X 25		2.78/70.6	2.72/69.1	2.400/60.96	.105/2.67	30u"/0.76u Au OR GXT OVER 50u"/1.27u Ni	RD	
-032						.150/3.81	30u"/0.76u Au OR GXT OVER 50u"/1.27u Ni	RD	
-033						.675/17.15	30u"/0.76u Au OR GXT OVER 50u"/1.27u Ni	SQ	
-034						.105/2.67	120/200u" TIN LEAD	SQ	
-034LF						.105/2.67	100/160u" TIN	SQ	
-035						.150/3.81	120/200u" TIN LEAD	SQ	
-035LF						.150/3.81	100/160u" TIN	SQ	
-036						.675/17.15	120/200u" TIN LEAD	SQ	
-036LF	2 X 25	D	2.78/70.6	2.72/69.1	2.400/60.96	.675/17.15	100/160u" TIN	SQ	
-037	2 X 7	C	.98/24.9	.92/23.4	.600/15.24	.105/2.67	30u"/0.76u Au OR GXT OVER 50u"/1.27u Ni	RD	
-038						.150/3.81	30u"/0.76u Au OR GXT OVER 50u"/1.27u Ni	RD	
-039						.675/17.15	30u"/0.76u Au OR GXT OVER 50u"/1.27u Ni	SQ	
-040						.105/2.67	120/200u" TIN LEAD	SQ	
-040LF						.105/2.67	100/160u" TIN	SQ	
-041						.150/3.81	120/200u" TIN LEAD	SQ	
-041LF						.150/3.81	100/160u" TIN	SQ	
-042						.675/17.15	120/200u" TIN LEAD	SQ	
-042LF	2 X 7	C	.98/24.9	.92/23.4	.600/15.24	.675/17.15	100/160u" TIN	SQ	
-043	2 X 8	D	1.08/27.4	1.02/25.9	.700/17.78	.105/2.67	30u"/0.76u Au OR GXT OVER 50u"/1.27u Ni	RD	
-044						.150/3.81	30u"/0.76u Au OR GXT OVER 50u"/1.27u Ni	RD	
-045						.675/17.15	30u"/0.76u Au OR GXT OVER 50u"/1.27u Ni	SQ	
-046						.105/2.67	120/200u" TIN LEAD	SQ	
-046LF						.105/2.67	100/160u" TIN	SQ	
-047						.150/3.81	120/200u" TIN LEAD	SQ	
-047LF						.150/3.81	100/160u" TIN	SQ	
-048						.675/17.15	120/200u" TIN LEAD	SQ	
66506 -048LF	2 X 8	D	1.08/27.4	1.02/25.9	.700/17.78	.675/17.15	100/160u" TIN	SQ	NOTE 2

mat'l. code	surface ISO 1302	tolerance ISO 406 ISO 1101	projection 	product family QUICKIE
trn ecn nchr date	tolerances unless otherwise specified			title HEADER QUICKIE SLIM LINE VERTICAL 4 WALL
AJ	angles 0.0002	linea XXXX.000/XXXX.001	scale 1:1	dwg no 66506
	dr L. SANDERS 1/25/95	enr M. SMYK 1/25/95	chr J. ROMBERGER 1/25/95	shee# of 10 size A3
	app M. SMYK 1/25/95			type Product Customer Drawing
sheet index	revision sheet			




Copyright FCI  
 FCI Connect Co

PRODUCT NUMBER NOTE 8,9 & 12	SIZE	STYLE	DIM A	DIM B	DIM C	DIM J	PIN PLATING (NOTE 16)	PIN TYPE	PLASTIC MATERIAL
66506 -049	2 X 5	A	.78/19.8	.72/18.3	.400/10.16	.150/3.81	30u"/0.76u GXT OR Au WITH GOLD FLASH	RD	NOTE 2
-050	2 X 10	D	1.28/32.5	1.22/31.0	.900/22.86				
-051	2 X 13		1.58/40.1	1.52/38.6	1.200/30.48				
-052	2 X 17		1.98/50.3	1.92/48.8	1.600/40.64				
-053	2 X 20		2.28/57.9	2.22/56.4	1.900/48.26				
-054	2 X 25	D	2.78/70.6	2.72/69.1	2.400/60.96				
-055	2 X 7	C	.98/24.9	.92/23.4	.600/15.24				
-056	2 X 8	D	1.08/27.4	1.02/25.9	.700/17.78	.150/3.81	30u"/0.76u GXT OR Au WITH GOLD FLASH		
-057	2 X 30		3.28/83.3	3.22/81.8	2.900/73.66	.105/2.67	30u"/0.76u Au OR GXT OVER 50u"/1.27u Ni	RD	
-058						.150/3.81	30u"/0.76u Au OR GXT OVER 50u"/1.27u Ni	RD	
-059						.675/17.15	30u"/0.76u Au OR GXT OVER 50u"/1.27u Ni	SQ	
-060						.105/2.67	120/200u" TIN LEAD	SQ	
-060LF						.105/2.67	100/160u" TIN	SQ	
-061						.150/3.81	120/200u" TIN LEAD	SQ	
-061LF						.150/3.81	100/160u" TIN	SQ	
-062						.675/17.15	120/200u" TIN LEAD	SQ	
-062LF						.675/17.15	100/160u" TIN	SQ	
-063						.105/2.67	30u"/0.76u GXT OR Au WITH GOLD FLASH	RD	
-064						.150/3.81		RD	
-065	2 X 30	D	3.28/83.3	3.22/81.8	2.900/73.66	.675/17.15			
-066	2 X 5	A	.78/19.8	.72/18.3	.400/10.16	.105/2.67			
-067	2 X 5	A	.78/19.8	.72/18.3	.400/10.16	.675/17.15			
-068	2 X 7	C	.98/24.9	.92/23.4	.600/15.24	.105/2.67			
-069	2 X 7	C	.98/24.9	.92/23.4	.600/15.24	.675/17.15			
-070	2 X 8	D	1.08/27.4	1.02/25.9	.700/17.78	.105/2.67	30u"/0.76u GXT OR Au WITH GOLD FLASH	RD	
-071	2 X 8	D	1.08/27.4	1.02/25.9	.700/17.78	.675/17.15	30u"/0.76u GXT OR Au WITH GOLD FLASH	SQ	
-072	2 X 10		1.28/32.5	1.22/31.0	.900/22.86	.105/2.67			
-073	2 X 10		1.28/32.5	1.22/31.0	.900/22.86	.675/17.15			
-074	2 X 13		1.58/40.1	1.52/38.6	1.200/30.48	.105/2.67			
-075	2 X 13		1.58/40.1	1.52/38.6	1.200/30.48	.675/17.15			
-076	2 X 17		1.98/50.3	1.92/48.8	1.600/40.64	.105/2.67			
-077	2 X 17		1.98/50.3	1.92/48.8	1.600/40.64	.675/17.15			
-078	2 X 20		2.28/57.9	2.22/56.4	1.900/48.26	.105/2.67			
-079	2 X 20		2.28/57.9	2.22/56.4	1.900/48.26	.675/17.15			
-080	2 X 25		2.78/70.6	2.72/69.1	2.400/60.96	.105/2.67			
66506 -081	2 X 25	D	2.78/70.6	2.72/69.1	2.400/60.96	.675/17.15	30u"/0.76u GXT OR Au WITH GOLD FLASH	SQ	NOTE 2

mat'l. code	surface ISO 1302	tolerance ISO 406 ISO 1101	projection 	product family QUICKIE
lfr	ecn no	dr	date	title
AJ				HEADER QUICKIE SLIM LINE VERTICAL 4 WALL
	angles	linear	scale 1:1	dwg no 66506
	dr	L. SANDERS	1/25/95	sheet 5 of 10 size A3
	enr	M. SMYK	1/25/95	type Product Customer Drawing
	chr	J. ROMBERGER	1/25/95	
	appd	M. SMYK	1/25/95	
sheet index	revision sheet			

PRODUCT NUMBER NOTE 8,9 & 12	SIZE	STYLE	DIM A	DIM B	DIM C	DIM J	PIN PLATING (NOTE 16)	PIN TYPE	PLASTIC MATERIAL
66506-082	2 X 5	A	.78/19.8	.72/18.3	.400/10.16	.105/2.67	15u"/0.38u Au OR GXT OVER 50u/1.27u Ni	RD	NOTE 2
-083	2 X 5	A	.78/19.8	.72/18.3	.400/10.16	.150/3.81		RD	
-084	2 X 5	A	.78/19.8	.72/18.3	.400/10.16	.675/17.15		SQ	
-085	2 X 7	C	.98/24.9	.92/23.4	.600/15.24	.105/2.67		RD	
-086	2 X 7	C	.98/24.9	.92/23.4	.600/15.24	.150/3.81		RD	
-087	2 X 7	C	.98/24.9	.92/23.4	.600/15.24	.675/17.15		SQ	
-088	2 X 8	D	1.08/27.4	1.02/25.9	.700/17.78	.105/2.67		RD	
-089	2 X 8		1.08/27.4	1.02/25.9	.700/17.78	.150/3.81		RD	
-090	2 X 8		1.08/27.4	1.02/25.9	.700/17.78	.675/17.15		SQ	
-091	2 X 10		1.28/32.5	1.22/31.0	.900/22.86	.105/2.67		RD	
-092	2 X 10		1.28/32.5	1.22/31.0	.900/22.86	.150/3.81		RD	
-093	2 X 10		1.28/32.5	1.22/31.0	.900/22.86	.675/17.15		SQ	
-094	2 X 13		1.58/40.1	1.52/38.6	1.200/30.48	.105/2.67		RD	
-095	2 X 13		1.58/40.1	1.52/38.6	1.200/30.48	.150/3.81		RD	
-096	2 X 13		1.58/40.1	1.52/38.6	1.200/30.48	.675/17.15		SQ	
-097	2 X 17		1.98/50.3	1.92/48.8	1.600/40.64	.105/2.67		RD	
-098	2 X 17		1.98/50.3	1.92/48.8	1.600/40.64	.150/3.81		RD	
-099	2 X 17		1.98/50.3	1.92/48.8	1.600/40.64	.675/17.15		SQ	
-100	2 X 20		2.28/57.9	2.22/56.4	1.900/48.26	.105/2.67		RD	
-101	2 X 20		2.28/57.9	2.22/56.4	1.900/48.26	.150/3.81		RD	
-102	2 X 20		2.28/57.9	2.22/56.4	1.900/48.26	.675/17.15		SQ	
-103	2 X 25		2.78/70.6	2.72/69.1	2.400/60.96	.105/2.67		RD	
-104	2 X 25		2.78/70.6	2.72/69.1	2.400/60.96	.150/3.81		RD	
-105	2 X 25	D	2.78/70.6	2.72/69.1	2.400/60.96	.675/17.15	15u"/0.38u Au OR GXT OVER 50u/1.27u Ni	SQ	
-106	2 X 30	D	3.28/83.3	3.22/81.8	2.900/73.66	.105/2.67	15u"/0.38u Au OR GXT OVER 50u/1.27u Ni	RD	
-107	2 X 30	D	3.28/83.3	3.22/81.8	2.900/73.66	.150/3.81	15u"/0.38u Au OR GXT OVER 50u/1.27u Ni	RD	
-108	2 X 30	D	3.28/83.3	3.22/81.8	2.900/73.66	.675/17.15	15u"/0.38u Au OR GXT OVER 50u/1.27u Ni	SQ	
-109	2 X 5	B	.78/19.8	.72/18.3	.400/10.16	.105/2.67	30u"/0.76u Au OR GXT OVER 50u"/1.27u Ni	RD	
-110						.150/3.81	30u"/0.76u Au OR GXT OVER 50u"/1.27u Ni	RD	
-111						.675/17.15	30u"/0.76u Au OR GXT OVER 50u"/1.27u Ni	SQ	
-112						.105/2.67	120/200u" TIN LEAD	SQ	
-112LF						.105/2.67	100/160u" TIN	SQ	
-113						.150/3.81	120/200u" TIN LEAD	SQ	
-113LF						.150/3.81	100/160u" TIN	SQ	
-114						.675/17.15	120/200u" TIN LEAD	SQ	
66506-114LF	2 X 5	B	.78/19.8	.72/18.3	.400/10.16	.675/17.15	100/160u" TIN	SQ	NOTE 2

mat'l. code	surface ISO 1302	tolerance ISO 406 ISO 1101	projection	product family QUICKIE
lfr ecn no dr date	tolerances unless otherwise specified		INCH/MM	title HEADER QUICKIE SLIM LINE VERTICAL 4 WALL
AJ	angles	linear	scale 1:1	dwg no 66506
	dr	L. SANDERS 1/25/95		sheet 6 of 10 size A3
	enr	M. SMYK 1/25/95		type Product Customer Drawing
	chr	J. ROMBERGER 1/25/95		
	appd	M. SMYK 1/25/95		
sheet index	revision sheet			

PDM:4Rev:AJ STATUS Released Printed: Apr 12, 2011 6

Copyright FCJ

D

PRODUCT NUMBER NOTE 8,9 & 12	SIZE	STYLE	DIM A	DIM B	DIM C	DIM J	PIN PLATING	PIN TYPE	PLASTIC MATERIAL
66506-115	2 X 5	B	.78/19.8	.72/18.3	.400/10.16	.105/2.67	15u"/0.38u Au OR GXT OVER 50u"/1.27u Ni	RD	NOTE 2
-116						.150/3.81	15u"/0.38u Au OR GXT OVER 50u"/1.27u Ni	RD	
-117						.675/17.15	15u"/0.38u Au OR GXT OVER 50u"/1.27u Ni	SQ	
-118						.105/2.67	30u"/0.76u Au OR GXT OVER 50u"/1.27u Ni	RD	
-119						.150/3.81	30u"/0.76u Au OR GXT OVER 50u"/1.27u Ni	RD	
-120	2 X 5	B	.78/19.8	.72/18.3	.400/10.16	.675/17.15	30u"/0.76u Au OR GXT OVER 50u"/1.27u Ni	SQ	NOTE 2
-121									
THRU									
-216									
DISCONTINUED									
-217	2 X 12	D	1.48/37.6	1.42/36.1	1.100/27.94	.105/2.67	15u"/0.38u Au OR GXT OVER 50u"/1.27u Ni	RD	NOTE 2
-218							30u"/0.76u Au OR GXT OVER 50u"/1.27u Ni	RD	
-219							30u"/0.76u GXT WITH GOLD FLASH	RD	
-220						.105/2.67	120/200u" TIN LEAD	SQ	
-220LF						.105/2.67	100/160u" TIN	SQ	
-221						.150/3.81	15u"/0.38u Au OR GXT OVER 50u"/1.27u Ni	RD	
-222							30u"/0.76u Au OR GXT OVER 50u"/1.27u Ni	RD	
-223							30u"/0.76u GXT WITH GOLD FLASH	RD	
-224						.150/3.81	120/200u" TIN LEAD	SQ	
-224LF						.150/3.81	100/160u" TIN	SQ	
-225						.675/17.15	15u"/0.38u Au OR GXT OVER 50u"/1.27u Ni	SQ	
-226							30u"/0.76u Au OR GXT OVER 50u"/1.27u Ni	SQ	
-227							30u"/0.76u GXT WITH GOLD FLASH	SQ	
-228							120/200u" TIN LEAD	SQ	
-228	2 X 12		1.48/37.6	1.42/36.1	1.100/27.94	.675/17.15	100/160u" TIN	SQ	
-229	2 X 15		1.78/45.2	1.72/43.7	1.400/35.56	.105/2.67	15u"/0.38u Au OR GXT OVER 50u"/1.27u Ni	RD	
-230							30u"/0.76u Au OR GXT OVER 50u"/1.27u Ni	RD	
-231							30u"/0.76u GXT WITH GOLD FLASH	RD	
-232						.105/2.67	120/200u" TIN LEAD	SQ	
-232LF						.105/2.67	100/160u" TIN	SQ	
-233	2 X 15	D	1.78/45.2	1.72/43.7	1.400/35.56	.150/3.81	15u"/0.38u Au OR GXT OVER 50u"/1.27u Ni	RD	
-234	2 X 15	D	1.78/45.2	1.72/43.7	1.400/35.56	.150/3.81	30u"/0.76u Au OR GXT OVER 50u"/1.27u Ni	RD	
-235						.150/3.81	30u"/0.76u GXT WITH GOLD FLASH	RD	
-236						.150/3.81	120/200u" TIN LEAD	SQ	
-236LF						.150/3.81	100/160u" TIN	SQ	
66506-237	2 X 15	D	1.78/45.2	1.72/43.7	1.400/35.56	.675/17.15	15u"/0.38u Au OR GXT OVER 50u"/1.27u Ni	SQ	NOTE 2

mat'l. code		surface ISO 1302		tolerance ISO 406 ISO 1101		projection FIRST ANGLE		product family QUICKIE	
lfr	ecn no	dr	date	tolerances unless otherwise specified		INCH/MM		title HEADER QUICKIE SLIM LINE VERTICAL 4 WALL	
AJ				linear		scale 1:1		dwg no 66506	
				0.01/0.13		0.001/0.025/0.051		sheet 7 of 10 size A3	
				dr L. SANDERS 1/25/95		engr M. SMYK 1/25/95		type Product Customer Drawing	
				chr J. ROMBERGER 1/25/95		appd M. SMYK 1/25/95			
sheet index	revision sheet								

PDM:4Rev:AJ STATUS Released Printed: Apr 12, 2011 6

Copyright FCI

FCIconnect.com

A

B

C

D

A

B

C

D





PRODUCT NUMBER NOTE 8,9 & 12	SIZE	STYLE	DIM A	DIM B	DIM C	DIM J	PIN PLATING (NOTE 16)	PIN TYPE	PLASTIC MATERIAL
66506-314	2 X 15	D	1.78/45.2	1.72/43.7	1.400/35.56	.097/2.46	30u"/0.76u GXT WITH GOLD FLASH	SQ	NOTE 2
-315	2 X 17		1.98/50.3	1.92/48.8	1.600/40.64				
-316	2 X 20		2.28/57.9	2.22/56.4	1.900/48.26				
-317	2 X 22		2.48/63.0	2.42/61.5	2.100/53.34				
-318	2 X 25		2.78/70.6	2.72/69.1	2.400/60.96				
-319	2 X 30		3.28/83.3	3.22/81.8	2.900/73.66	.097/2.46	30u"/0.76u GXT WITH GOLD FLASH		
-320	2 X 8		1.08/27.4	1.02/25.9	.700/17.78	.105/2.67	30u"/0.76u Au OR GXT OVER 50u"/1.27u Ni		
-321	2 X 25		2.78/70.6	2.72/69.1	2.400/60.96		30u"/0.76u Au OR GXT OVER 50u"/1.27u Ni		
-322	2 X 8		1.08/27.4	1.02/25.9	.700/17.78		50u"/1.27u Au OVER 50u"/1.27u Ni		
-323	2 X 17		1.98/50.3	1.92/48.8	1.600/40.64	.105/2.67	50u"/1.27u Au OVER 50u"/1.27u Ni		NOTE 2
-324	2 X 25		2.78/70.6	2.72/69.1	2.400/60.96	.120/3.05	15u"/.38u GXT WITH GOLD FLASH		NOTE 6
-325	2 X 25		2.78/70.6	2.72/69.1	2.400/60.96	.150/3.81	30u"/0.76u GXT WITH GOLD FLASH		NOTE 2
-326	2 X 10		1.28/32.5	1.22/31.0	.900/22.86	.120/3.05	15u"/.38u GXT WITH GOLD FLASH		NOTE 7
-327	2 X 17		1.98/50.3	1.92/48.8	1.600/40.64	.120/3.05	15u"/.38u GXT WITH GOLD FLASH		NOTE 7
-328	2 X 25		2.78/70.6	2.72/69.1	2.400/60.96	.120/3.05	15u"/.38u GXT WITH GOLD FLASH		NOTE 7
-329	2 X 13		1.58/40.1	1.52/38.6	1.200/30.48	.150/3.81	15u"/.38u Au OR GXT OVER 50u"/1.27u Ni		NOTE 2
-330	2 X 25		2.78/70.6	2.72/69.1	2.400/60.96		15u"/.38u Au OR GXT OVER 50u"/1.27u Ni		
-331	2 X 30		3.28/83.3	3.22/81.8	2.900/73.66		15u"/.38u Au OR GXT OVER 50u"/1.27u Ni		
-332	2 X 17		1.98/50.3	1.92/48.8	1.600/40.64		15u"/.38u Au OR GXT OVER 50u"/1.27u Ni		
-333	2 X 20		2.28/57.9	2.22/56.4	1.900/48.26	.150/3.81	30u"/0.76u GXT WITH GOLD FLASH	SQ	
-334	2 X 10		1.28/32.5	1.22/31.0	.900/22.86	.105/2.67	15u"/.38u GXT WITH GOLD FLASH	RD	NOTE 2
-335	2 X 20		2.28/57.9	2.22/56.4	1.900/48.26	.105/2.67	30u"/0.76u GXT WITH GOLD FLASH	RD	NOTE 6
-336	2 X 22		2.48/63.0	2.42/61.5	2.100/53.34	.105/2.67	30u"/0.76u GXT WITH GOLD FLASH	RD	NOTE 6
-337	2 X 12	D	1.48/37.6	1.42/36.1	1.100/27.94	.150/3.81	15u"/.38u Au OR GXT OVER 50u"/1.27u Ni	SQ	NOTE 2
-338	2 X 5	A	.78/19.8	.72/18.3	.400/10.16	.150/3.81	15u"/.38u Au OR GXT OVER 50u"/1.27u Ni	SQ	NOTE 2
-339	2 X 4	A	.68/17.3	.62/15.8	.300/7.62	.105/2.67	15u"/.38u GXT WITH GOLD FLASH	SQ	NOTE 2
66506-340	2 X 10	D	1.28/32.5	1.22/31.0	.900/22.86	.150/3.81	30u"/0.76u Au OR GXT OVER 50u"/1.27u Ni	SQ	NOTE 2

mat'l. code	surface ISO 1302	tolerance ISO 406 ISO 1101	projection 	product family QUICKIE
lfr	ecn no	dr	date	tolerances unless otherwise specified
AJ				linear XXX.X/XXX.X XXX.X/XXX.X XXX.X/XXX.X
				angles 0m2t
				dr L. SANDERS 1/25/95
				enr M. SMYK 1/25/95
				chr J. ROMBERGER 1/25/95
				appd M. SMYK 1/25/95
sheet index	revision sheet			

title	HEADER QUICKIE SLIM LINE VERTICAL 4 WALL
dwg no	66506
sheet 9 of 10	size A3
type	Product Customer Drawing

FCIconnect.com  
Copyright FCI

PRODUCT NUMBER NOTE 8, 9 & 12	SIZE	STYLE	DIM A	DIM B	DIM C	DIM J	PIN PLATING (NOTE 16)	PIN TYPE	PLASTIC MATERIAL
66506-341	2 X 17	D	1.98/50.3	1.92/48.8	1.600/40.64	.150/3.81	30u"/.76u Au OR GXT 50u"/1.27u Ni	SQ	NOTE 2
-342	2 X 10	D	1.28/32.5	1.22/31.0	.900/22.86	.150/3.81	15u"/.38u GXT	SQ	NOTE 2
-343	2 X 17	D	1.98/50.3	1.92/48.8	1.600/40.64	.150/3.81	15u"/.38u GXT	SQ	NOTE 2
-344	U N A S S I G N E D								
-345	2 X 20	D	2.28/57.9	2.22/56.4	1.900/48.26	.120/3.05	15u"/.38u GXT WITH GOLD FLASH	SQ	NOTE 7
-346	U N A S S I G N E D								
-347	U N A S S I G N E D								
-348	2 X 5	A	.78/19.8	.72/18.3	.400/10.16	.105/2.67	15u"/.38u GXT WITH GOLD FLASH	SQ	NOTE 2
-349	2 X 7	C	.98/24.9	.92/23.4	.600/15.24				
-350	2 X 8	D	1.08/27.4	1.02/25.9	.700/17.78				
-351	2 X 10		1.28/32.5	1.22/31.0	.900/22.86				
-352	2 X 13		1.58/40.1	1.52/38.6	1.200/30.48				
-353	2 X 17		1.98/50.3	1.92/48.8	1.600/40.64				
-354	2 X 20		2.28/57.9	2.22/56.4	1.900/48.26				
-355	2 X 22		2.48/63.0	2.42/61.5	2.100/53.34				
-356	2 X 25		2.78/70.6	2.72/69.1	2.400/60.96				
-357	2 X 30		3.28/83.3	3.22/81.8	2.900/73.66	.105/2.67	15u"/.38u GXT WITH GOLD FLASH		
-358	2 X 10		1.28/32.5	1.22/31.0	.900/22.86	.150/3.81	30u"/.76u GXT /50u"/1.27u Ni		
-359	2 X 17		1.98/50.3	1.92/48.8	1.600/40.64	.150/3.81	30u"/.76u GXT /50u"/1.27u Ni		NOTE 2
-360	2 X 12	D	1.48/37.6	1.42/36.1	1.100/27.94	.295/7.49	15u"/.38u GXT WITH GOLD FLASH		NOTE 7
-361	2 X 5	E	.78/19.8	.72/18.3	.400/10.16	.105/2.67	15u"/.38u GXT WITH GOLD FLASH		
-362	2 X 5	A	.78/19.8	.72/18.3	.400/10.16	.105/2.67	30u"/.76u GXT WITH GOLD FLASH		NOTE 2
-363	2 X 8	D	1.08/27.4	1.02/25.9	.700/17.78	.105/2.67			
-364	2 X 10	D	1.28/32.5	1.22/31.0	.900/22.86	.105/2.67			
-365	2 X 15	D	1.78/45.2	1.72/43.7	1.400/35.56	.105/2.67			
-366	2 X 17	D	1.98/50.3	1.92/48.8	1.600/40.64	.105/2.67			
-367	2 X 5	A	.78/19.8	.72/18.3	.400/10.16	.150/3.81			
-368	2 X 17	D	1.98/50.3	1.92/48.8	1.600/40.64	.150/3.81			
66506-369	2 X 25	D	2.78/70.6	2.72/69.1	2.400/60.96	.150/3.81	30u"/.76u GXT WITH GOLD FLASH	SQ	NOTE 2

SEE NOTE 11  
SEE NOTE 11

mat'l. code	surface ISO 1302	tolerance ISO 406 ISO 1101	projection 	product family QUICKIE
lfr	ecn	no	dr	date
AJ				
angles	linear	0.01/0.03	INCH/MM	title HEADER QUICKIE SLIM LINE VERTICAL 4 WALL
Ort2		0.004/0.008/0.010/0.013	scale 1:1	dwg no 66506
dr	L. SANDERS	1/25/95		sheet 10 of 10 size A3
enr	M. SMYK	1/25/95		type Product Customer Drawing
chr	J. ROMBERGER	1/25/95		
appd	M. SMYK	1/25/95		
sheet index	revision sheet			

form: A3

PDM:4Rev:AJ

STATUS Released

Printed: Apr 12, 2011

6