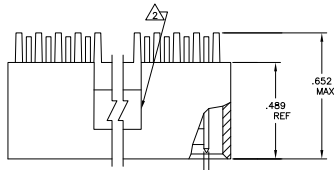
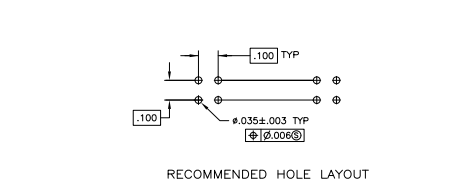
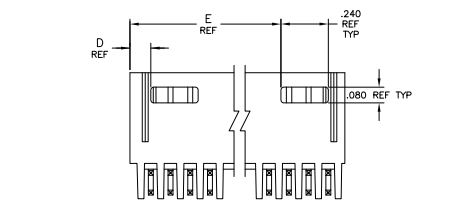
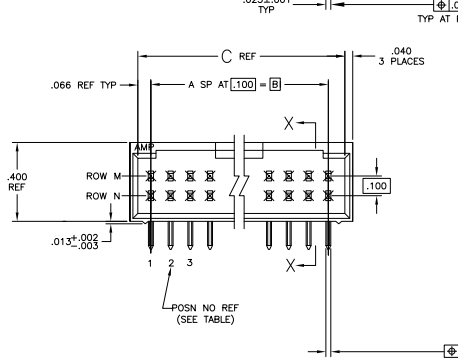


THIS DRAWING IS UNPUBLISHED
 ALL RIGHTS RESERVED

| REV | DATE | DESCRIPTION | BY | CHK | APP |
|-----|------|-------------|----|-----|-----|
| AD | 00 | | | | |



1. STAND-OFFS:
 6 THRU 18 POSN (2) RECD LOCATED AS SHOWN OUTBOARD OF END CIRCUITS.
 20 THRU 38 POSN (3) RECD LOCATED OUTBOARD OF END CIRCUITS PLUS (1) CENTERED.
 40 THRU 74 POSN (4) RECD LOCATED OUTBOARD OF END CIRCUITS WITH (2) EVENLY SPACED WITHIN THE REMAINING LENGTH.
- △ ACCESS SLOT
 - △ .000100-.000200 BRIGHT TIN-LEAD OVER .000050 NICKEL
 - △ .000100-.000200 BRIGHT TIN OVER .000050 NICKEL
 - △ PRELIMINARY PART
 - △ .000100-.000200 MATTE TIN OVER .000050 NICKEL
 - △ OBSOLETE PARTS: OBSOLETE CIS STREAMLINING PER D.RENAUD/D.SINISI



SECTION X-X

| REV | DATE | DESCRIPTION | BY | CHK | APP | REVISIONS | |
|-----|------|-------------|----|-----|-----|-----------|------|
| | | | | | | REV | DATE |
| AD | 00 | | | | | | |
| AD | 00 | | | | | | |

| FINISH | E | D | C | B | A | NO. OF POSN | PART NO. |
|--------|---|---|---|---|---|-------------|-----------|
| △ | | | | | | 2 | 6-87579-5 |
| △ | | | | | | 6 | 8-87579-4 |
| △ | | | | | | 74 | 8-87579-3 |
| △ | | | | | | 35 | 8-87579-2 |
| △ | | | | | | 34 | 8-87579-1 |
| △ | | | | | | 33 | 8-87579-0 |
| △ | | | | | | 32 | 8-87579-9 |
| △ | | | | | | 31 | 8-87579-8 |
| △ | | | | | | 30 | 8-87579-7 |
| △ | | | | | | 29 | 8-87579-6 |
| △ | | | | | | 28 | 8-87579-5 |
| △ | | | | | | 27 | 8-87579-4 |
| △ | | | | | | 26 | 8-87579-3 |
| △ | | | | | | 25 | 8-87579-2 |
| △ | | | | | | 24 | 8-87579-1 |
| △ | | | | | | 23 | 8-87579-0 |
| △ | | | | | | 22 | 8-87579-9 |
| △ | | | | | | 21 | 8-87579-8 |
| △ | | | | | | 20 | 8-87579-7 |
| △ | | | | | | 19 | 8-87579-6 |
| △ | | | | | | 18 | 8-87579-5 |
| △ | | | | | | 17 | 8-87579-4 |
| △ | | | | | | 16 | 8-87579-3 |
| △ | | | | | | 15 | 8-87579-2 |
| △ | | | | | | 14 | 8-87579-1 |
| △ | | | | | | 13 | 8-87579-0 |
| △ | | | | | | 12 | 8-87579-9 |
| △ | | | | | | 11 | 8-87579-8 |
| △ | | | | | | 10 | 8-87579-7 |
| △ | | | | | | 9 | 8-87579-6 |
| △ | | | | | | 8 | 8-87579-5 |
| △ | | | | | | 7 | 8-87579-4 |
| △ | | | | | | 6 | 8-87579-3 |
| △ | | | | | | 5 | 8-87579-2 |
| △ | | | | | | 4 | 8-87579-1 |
| △ | | | | | | 3 | 8-87579-0 |
| △ | | | | | | 2 | 8-87579-9 |
| △ | | | | | | 29 | 8-87579-8 |
| △ | | | | | | 28 | 8-87579-7 |
| △ | | | | | | 27 | 8-87579-6 |
| △ | | | | | | 26 | 8-87579-5 |
| △ | | | | | | 25 | 8-87579-4 |
| △ | | | | | | 24 | 8-87579-3 |
| △ | | | | | | 23 | 8-87579-2 |
| △ | | | | | | 22 | 8-87579-1 |
| △ | | | | | | 21 | 8-87579-0 |
| △ | | | | | | 20 | 8-87579-9 |
| △ | | | | | | 19 | 8-87579-8 |
| △ | | | | | | 18 | 8-87579-7 |
| △ | | | | | | 17 | 8-87579-6 |
| △ | | | | | | 16 | 8-87579-5 |
| △ | | | | | | 15 | 8-87579-4 |
| △ | | | | | | 14 | 8-87579-3 |
| △ | | | | | | 13 | 8-87579-2 |
| △ | | | | | | 12 | 8-87579-1 |
| △ | | | | | | 11 | 8-87579-0 |
| △ | | | | | | 10 | 8-87579-9 |
| △ | | | | | | 9 | 8-87579-8 |
| △ | | | | | | 8 | 8-87579-7 |
| △ | | | | | | 7 | 8-87579-6 |
| △ | | | | | | 6 | 8-87579-5 |
| △ | | | | | | 5 | 8-87579-4 |
| △ | | | | | | 4 | 8-87579-3 |
| △ | | | | | | 3 | 8-87579-2 |
| △ | | | | | | 2 | 8-87579-1 |

THIS DRAWING IS A CONTROLLED DOCUMENT. DATE: 11-10-89

TE Connectivity

TE CONNECTIVITY

HRD ASSY, MOD II, SHROULDED, 4 SIDES, UBL ROW, 100 X 100 G/L, RIGHT ANGLE, W/025 SQ POSTS

SIZE: 4.1

REV: 1

DATE: 11-10-89

BY: AD

CHK: 00

APP: 00

REVISIONS: 1

DESCRIPTION: HRD ASSY, MOD II, SHROULDED, 4 SIDES, UBL ROW, 100 X 100 G/L, RIGHT ANGLE, W/025 SQ POSTS

PART NO: 87579