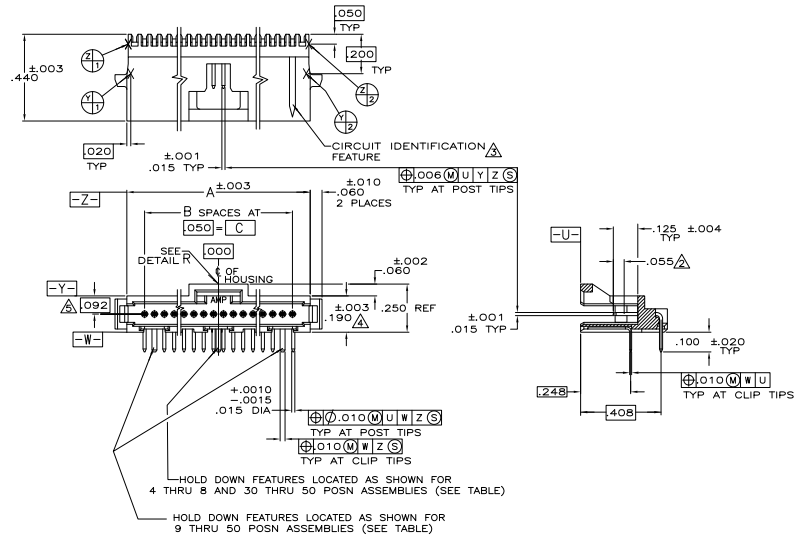


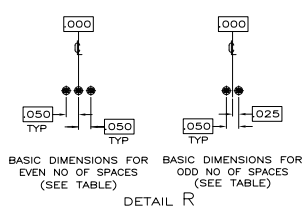
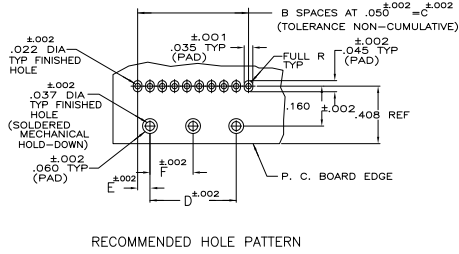
REV	DATE	DESCRIPTION	BY	CHK
00	11/11/81	REVISED PER EDD-11-004587	RK	HMR



- △ CONTACT AREAS PLATED WITH .00030 GOLD, SOLDER TAILS PLATED WITH .000150 TIN-LEAD, ALL OVER .000050 NICKEL
- △ POINT OF MEASUREMENT FOR GOLD THICKNESS
- △ CIRCUIT IDENTIFICATION FEATURE OMITTED ON 4, 5, 6 & 7 POSITION HEADER ASSEMBLIES
- △ DIMENSION APPLIES AT BASE OF SHROUD
- △ THE NOTED DIMENSIONS APPLY AT THE INTERSECTION OF THE POST AND HOUSING
- △ CONTACT AREAS PLATED WITH .00030 GOLD, SOLDER TAILS PLATED WITH .000150 TIN, ALL OVER .000050 NICKEL
- △ MATERIAL: HOUSING - THERMOPLASTIC, COLOR-BLACK CONTACT - COPPER ALLOY
- △ OBSOLETE PARTS: OBSOLETE CIS STREAMLINING PER D.RENAUD/D.SINISI

HOLD DOWN FEATURES LOCATED AS SHOWN FOR 4 THRU 8 AND 30 THRU 50 POSN ASSEMBLIES (SEE TABLE)

HOLD DOWN FEATURES LOCATED AS SHOWN FOR 9 THRU 50 POSN ASSEMBLIES (SEE TABLE)



	.625	.050	1.250	1.350	27	1.530	28	7-104074-0
△ OBSOLETE	1.175	.050	2.350	2.450	49	2.630	50	6-104074-9
△	1.050	.050	2.100	2.200	44	2.380	45	6-104074-8
△	.925	.050	1.850	1.950	39	2.130	40	6-104074-7
△	.825	.050	1.650	1.750	35	1.930	36	6-104074-6
△ OBSOLETE	.600	.050	1.200	1.300	26	1.480	27	6-104074-5
△ OBSOLETE	-.050	.950	1.050	21	1.230	22	6-104074-4	
△ OBSOLETE	-.050	.700	.800	16	.980	17	6-104074-3	
△ OBSOLETE	-.050	.500	.600	12	.780	13	6-104074-2	
△	-.050	.450	.550	11	.730	12	6-104074-1	
△	-.175	-.350	7	.530	8	6-104074-0		
△	-.150	-.300	6	.480	7	5-104074-9		
△	-.125	-.250	5	.430	6	5-104074-8		
△	-.075	-.150	3	.330	4	5-104074-7		
△	.675	.050	1.350	1.450	29	1.630	30	5-104074-6
△	-.050	1.100	1.200	24	1.380	25	5-104074-5	
△	-.050	.850	.950	19	1.130	20	5-104074-4	
△	-.050	.600	.700	14	.880	15	5-104074-3	
△	-.100	-.200	4	.380	5	5-104074-2		
△	-.050	.350	.450	9	.630	10	5-104074-1	
△ OBSOLETE	.625	.050	1.250	1.350	27	1.530	28	2-104074-0
△	1.175	.050	2.350	2.450	49	2.630	50	1-104074-9
△	1.050	.050	2.100	2.200	44	2.380	45	1-104074-8
△	.925	.050	1.850	1.950	39	2.130	40	1-104074-7
△	.825	.050	1.650	1.750	35	1.930	36	1-104074-6
△ OBSOLETE	.600	.050	1.200	1.300	26	1.480	27	1-104074-5
△ OBSOLETE	-.050	.950	1.050	21	1.230	22	1-104074-4	
△ OBSOLETE	-.050	.700	.800	16	.980	17	1-104074-3	
△ OBSOLETE	-.050	.500	.600	12	.780	13	1-104074-2	
△ OBSOLETE	-.050	.450	.550	11	.730	12	1-104074-1	
△ OBSOLETE	-.175	-.350	7	.530	8	1-104074-0		
△	-.150	-.300	6	.480	7	104074-9		
△	-.125	-.250	5	.430	6	104074-8		
△	-.075	-.150	3	.330	4	104074-7		
△	.675	.050	1.350	1.450	29	1.630	30	104074-6
△	-.050	1.100	1.200	24	1.380	25	104074-5	
△	-.050	.850	.950	19	1.130	20	104074-4	
△	-.050	.600	.700	14	.880	15	104074-3	
△	-.100	-.200	4	.380	5	104074-2		
△	-.050	.350	.450	9	.630	10	104074-1	
	F	E	D	C	B	A	NO OF POSN	PART NUMBER

THIS DRAWING IS A CONTROLLED DOCUMENT. THE ORIGINAL IS KEPT IN THE RECORDS DEPARTMENT. THE DATE OF THE ORIGINAL IS 11-11-81. THE DATE OF THIS REVISION IS 11-11-81. THE DRAWING IS A CUSTOMER DRAWING. THE CUSTOMER DRAWING NUMBER IS 100779. THE DRAWING IS FOR THE PART NUMBER 104074. THE DRAWING IS FOR THE PART NUMBER 104074. THE DRAWING IS FOR THE PART NUMBER 104074.

TE Connectivity
 HEADER ASSEMBLY, RIGHT ANGLE
 SINGLE ROW, W/SIDE & END LATCHES
 AUTOMOTIVE SYSTEM SO.

114-25031
 108-1093
 111-25031

DATE: 11-11-81
 DRAWN BY: [blank]
 CHECKED BY: [blank]
 APPROVED BY: [blank]