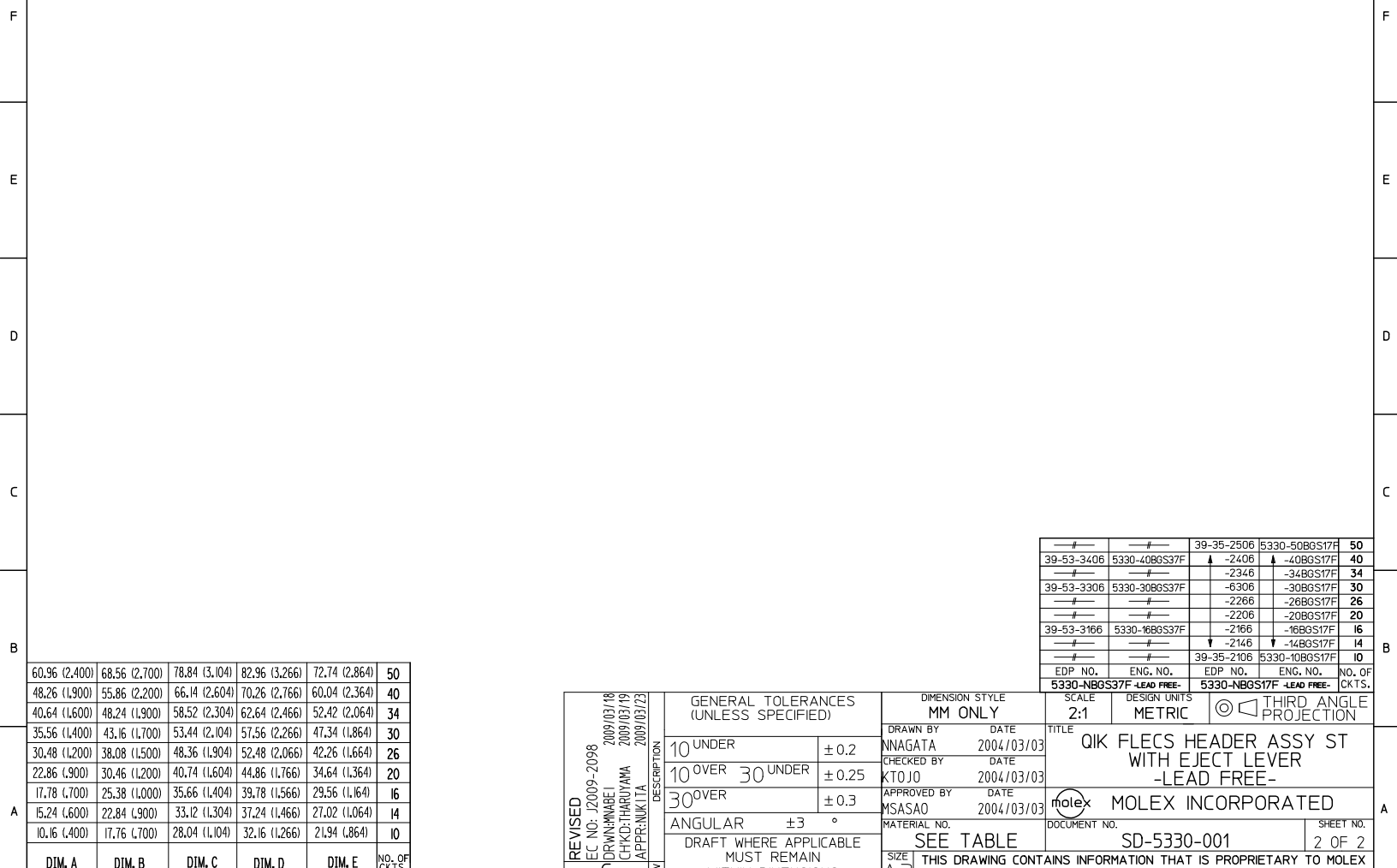




10 9 8 7 6 5 4 3 2 1



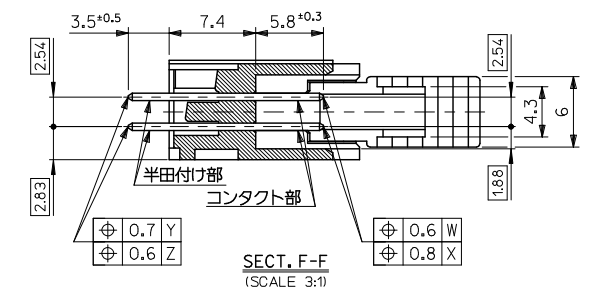
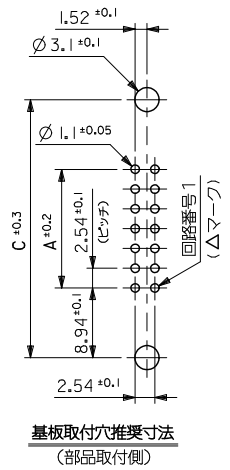
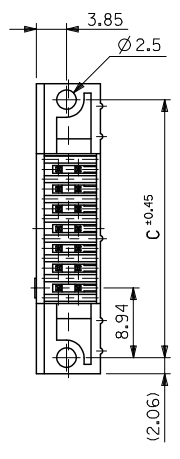
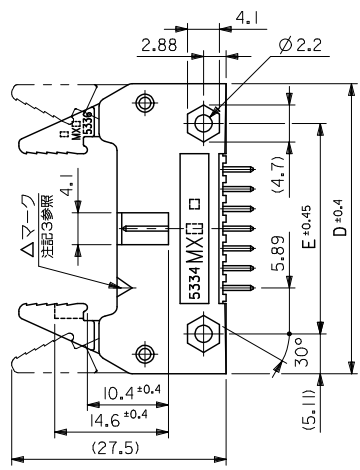
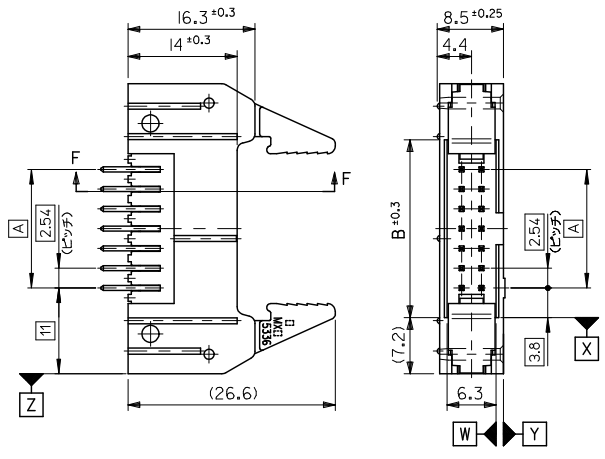
60.96 (2.400)	68.56 (2.700)	78.84 (3.104)	82.96 (3.266)	72.74 (2.864)	50
48.26 (1.900)	55.86 (2.200)	66.14 (2.604)	70.26 (2.766)	60.04 (2.364)	40
40.64 (1.600)	48.24 (1.900)	58.52 (2.304)	62.64 (2.466)	52.42 (2.064)	34
35.56 (1.400)	43.16 (1.700)	53.44 (2.104)	57.56 (2.266)	47.34 (1.864)	30
30.48 (1.200)	38.08 (1.500)	48.36 (1.904)	52.48 (2.066)	42.26 (1.664)	26
22.86 (.900)	30.46 (1.200)	40.74 (1.604)	44.86 (1.766)	34.64 (1.364)	20
17.78 (.700)	25.38 (1.000)	35.66 (1.404)	39.78 (1.566)	29.56 (1.164)	16
15.24 (.600)	22.84 (.900)	33.12 (1.304)	37.24 (1.466)	27.02 (1.064)	14
10.16 (.400)	17.76 (.700)	28.04 (1.104)	32.16 (1.266)	21.94 (.864)	10
DIM. A	DIM. B	DIM. C	DIM. D	DIM. E	NO. OF CKTS.

---	---	39-35-2506	5330-50BGS17F	50
39-53-3406	5330-40BGS37F	▲ -2406	▲ -40BGS17F	40
---	---	-2346	-34BGS17F	34
39-53-3306	5330-30BGS37F	-6306	-30BGS17F	30
---	---	-2266	-26BGS17F	26
---	---	-2206	-20BGS17F	20
39-53-3166	5330-16BGS37F	-2166	-16BGS17F	16
---	---	▼ -2146	▼ -14BGS17F	14
---	---	39-35-2106	5330-10BGS17F	10
EDP NO.	ENG. NO.	EDP NO.	ENG. NO.	NO. OF CKTS.
5330-NBGS37F	-LEAD FREE-	5330-NBGS17F	-LEAD FREE-	

REVISED EC NO: J2009-2098 DRAWN BY: IRUNHABEI 2009/03/18 CHECKED BY: CHYKD:THARYAMA 2009/03/19 APPR: NIKITA 2009/03/23	GENERAL TOLERANCES (UNLESS SPECIFIED)		DIMENSION STYLE MM ONLY		SCALE 2:1	DESIGN UNITS METRIC	THIRD ANGLE PROJECTION
	10 UNDER	± 0.2	DRAWN BY NNAGATA	DATE 2004/03/03	TITLE QIK FLECS HEADER ASSY ST WITH EJECT LEVER -LEAD FREE-		
	10 OVER 30 UNDER	± 0.25	CHECKED BY KTOJO	DATE 2004/03/03	MOLEX INCORPORATED		
	30 OVER	± 0.3	APPROVED BY MSASAO	DATE 2004/03/03	DOCUMENT NO. SD-5330-001	SHEET NO. 2 OF 2	
	ANGULAR ± 3 °		MATERIAL NO. SEE TABLE		THIS DRAWING CONTAINS INFORMATION THAT IS PROPRIETARY TO MOLEX INCORPORATED AND SHOULD NOT BE USED WITHOUT WRITTEN PERMISSION		
DRAFT WHERE APPLICABLE MUST REMAIN WITHIN DIMENSIONS							

ib\_frame\_A3\_J\_ME\_S Rev. E 2006/04/15 9 8 7 6 5 4 3 2 1 EN-02JA(021)

10 9 8 7 6 5 4 3 2 1



注記 1. 材料 ヘッダー&エジェクトレバー : ガラス繊維 15% 入り PBTP (UL94V-0), 黒色  
 ピン : 黄銅, サイズ □0.635  
 スプリングピン : 鋼製  
 2. 嵌合相手 : 5320 シリーズ  
 3. 使用符号の説明  
 ベースナンバー 5330 - N B \*  
 極数  
 エジェクトレバー付  
 ピンのメッキコード

コード*	△マークの色	コンタクト部	半田付け部	下地メッキ
GS1	黄	金 0.1μm MIN.	半田 3μm MIN.	ニッケル 1μm MIN.
LEAD-FREE GS17F	黄	金 0.1μm MIN.	錫 1μm MIN.	ニッケル 1μm MIN.
LEAD-FREE T2	黒	銅 1μm MIN.		ニッケル 0.5μm MIN.

60	73.66	81.26	91.54	95.66	85.44
50	60.96	68.56	78.84	82.96	72.74
40	48.26	55.86	66.14	70.26	60.04
34	40.64	48.24	58.52	62.64	52.42
30	35.56	43.16	53.44	57.56	47.34
26	30.48	38.08	48.36	52.48	42.26
20	22.86	30.46	40.74	44.86	34.64
16	17.78	25.38	35.66	39.78	29.56
14	15.24	22.84	33.12	37.24	27.02
10	10.16	17.76	28.04	32.16	21.94
極数	A 寸法	B 寸法	C 寸法	D 寸法	E 寸法

REVISED EC NO: J2009-2098 DRAWN BY: K CHKD: THARYAMA APPR: NIKITA	DESCRIPTION 2009/03/18 2009/03/19 2009/03/23	GENERAL TOLERANCES (UNLESS SPECIFIED)		DIMENSION STYLE MM ONLY		SCALE 2:1	DESIGN UNITS METRIC	THIRD ANGLE PROJECTION		
		10 UNDER	±0.2	DRAWN BY H. HIRAMOTO	DATE 1990/06/18	TITLE QIK FLECS HEADER ASSY ST WITH EJECT LEVER JAPANESE ONLY				
		10 OVER 30 UNDER	±0.25	CHECKED BY M. SASAO	DATE	MOLEX INCORPORATED				
		30 OVER	±0.3	APPROVED BY H. IKESUGI	DATE	DOCUMENT NO. SD-5330-002				
ANGULAR ±3°		DRAFT WHERE APPLICABLE MUST REMAIN WITHIN DIMENSIONS		MATERIAL NO. SEE SHEET 2		SHEET NO. 1 OF 2		THIS DRAWING CONTAINS INFORMATION THAT IS PROPRIETARY TO MOLEX INCORPORATED AND SHOULD NOT BE USED WITHOUT WRITTEN PERMISSION		

ib\_frame\_A3\_J\_ME\_S  
Rev. E 2006/04/15

EN-02JA(021)

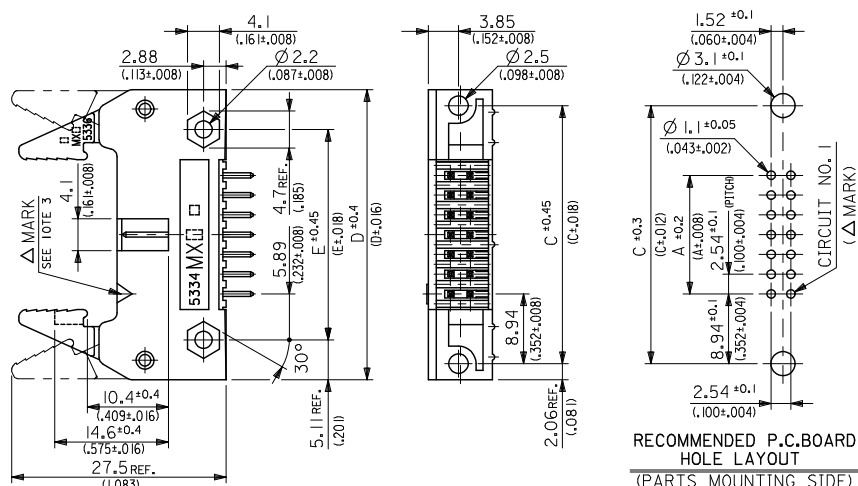
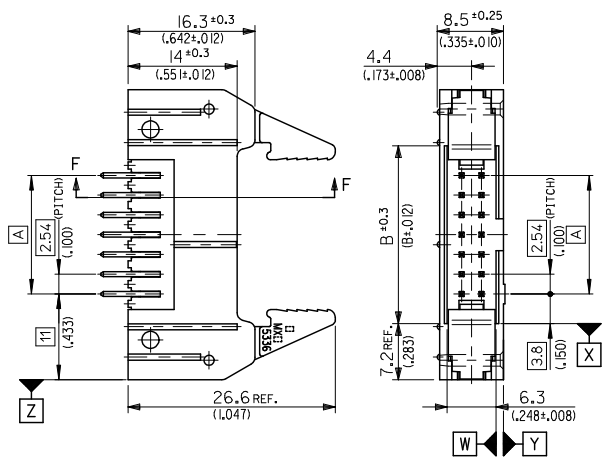
10 9 8 7 6 5 4 3 2 1

—#—	—#—	60
39-35-2506	5330-50BGS17F	50
▲-2406	▲-40BGS17F	40
-2346	-34BGS17F	34
-2306	-30BGS17F	30
-2266	-26BGS17F	26
-2206	-20BGS17F	20
-2166	-16BGS17F	16
▼-2146	▼-14BGS17F	14
39-35-2106	5330-10BGS17F	10
EDP NO.	ENG. NO.	極 数
5330-NBGS17F -LEAD FREE-		

—#—	—#—	39-26-6606	5330-60BGS1	60
39-28-5500	5330-50BT2	39-26-6506	5330-50BGS1	50
▲-5400	▲-40BT2	39-26-6406	5330-40BGS1	40
-5340	-34BT2	39-26-6346	5330-34BGS1	34
-5300	-30BT2	39-26-6306	5330-30BGS1	30
-5260	-26BT2	—#—	—#—	26
-5200	-20BT2	39-26-6206	5330-20BGS1	20
-5160	-16BT2	39-26-6166	5330-16BGS1	16
▼-5140	▼-14BT2	39-26-6146	5330-14BGS1	14
39-28-5100	5330-10BT2	—#—	—#—	10
EDP NO.	ENG. NO.	EDP NO.	ENG. NO.	極 数
5330-NBT2 -LEAD FREE-		5330-NBGS1		

<b>REVISED</b> EEC NO: J2009-2098 DRAWN BY: DR. HIRAMOTO 2009/03/18 CHECKED BY: CHYKD:THARYAMA 2009/03/19 APPR: NIKITA 2009/03/23 K	GENERAL TOLERANCES (UNLESS SPECIFIED)		DIMENSION STYLE <b>MM ONLY</b>		SCALE <b>2:1</b>	DESIGN UNITS <b>METRIC</b>	<b>THIRD ANGLE PROJECTION</b>		
	10 UNDER ±0.2 10 OVER 30 UNDER ±0.25 30 OVER ±0.3	DRAWN BY: H. HIRAMOTO DATE: 1990/06/18 CHECKED BY: M. SASAO DATE:		TITLE <b>QIK FLECS HEADER ASSY ST WITH EJECT LEVER JAPANESE ONLY</b>					
	ANGULAR ±3 ° DRAFT WHERE APPLICABLE MUST REMAIN WITHIN DIMENSIONS	APPROVED BY: H. IKESUGI DATE:		<b>MOLEX INCORPORATED</b>			DOCUMENT NO. <b>SD-5330-002</b>		SHEET NO. <b>2 OF 2</b>
	SEE TABLE		MATERIAL NO.		THIS DRAWING CONTAINS INFORMATION THAT IS PROPRIETARY TO MOLEX INCORPORATED AND SHOULD NOT BE USED WITHOUT WRITTEN PERMISSION				

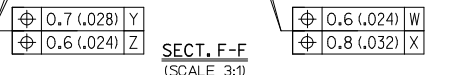
10 9 8 7 6 5 4 3 2 1



NOTES 1. MATERIAL HEADER & EJECT LEVER : G.F. 15% PBTP (UL94V-0), COLOR---BLACK  
PINS : BRASS, SIZE--- □0.635(0.025 SQ.)  
SPRING PIN : STEEL  
2. MATES WITH MOLEX CONNECTOR SERIES OF 5320.  
3. LEGEND

BASE NUMBER 5330 - N B \*  
CIRCUIT SIZE  
WITH EJECT LEVER  
PLATING CODE OF PIN

CODE**	△ MARK COLOR	CONTACT AREA	SOLDER AREA	UNDER PLATE
GS1	YELLOW	GOLD 0.1µm(0.000004) MIN.	TIN-LEAD 3µm(0.00012) MIN.	NICKEL 1 µm(0.00004) MIN.
LEAD-FREE GS17F	YELLOW	GOLD 0.1µm(0.000004) MIN.	TIN 1 µm(0.00004) MIN.	NICKEL 1 µm(0.00004) MIN.
LEAD-FREE T2	BLACK	TIN 1 µm(0.00004) MIN.		NICKEL 0.5µm(0.00002) MIN.



60	73.66 (2.900)	81.26 (3.200)	91.54 (3.604)	95.66 (3.766)	85.44 (3.364)
50	60.96 (2.400)	68.56 (2.700)	78.84 (3.104)	82.96 (3.266)	72.74 (2.864)
40	48.26 (1.900)	55.86 (2.200)	66.14 (2.604)	70.26 (2.766)	60.04 (2.364)
34	40.64 (1.600)	48.24 (1.900)	58.52 (2.304)	62.64 (2.466)	52.42 (2.064)
30	35.56 (1.400)	43.16 (1.700)	53.44 (2.104)	57.56 (2.266)	47.34 (1.864)
26	30.48 (1.200)	38.08 (1.500)	48.36 (1.904)	52.48 (2.066)	42.26 (1.664)
20	22.86 (0.900)	30.46 (1.200)	40.74 (1.604)	44.86 (1.766)	34.64 (1.364)
16	17.78 (0.700)	25.38 (1.000)	35.66 (1.404)	39.78 (1.566)	29.56 (1.164)
14	15.24 (0.600)	22.84 (0.900)	33.12 (1.304)	37.24 (1.466)	27.02 (1.064)
10	10.16 (0.400)	17.76 (0.700)	28.04 (1.104)	32.16 (1.266)	21.94 (0.864)
NO. OF PARTS	DIM. A	DIM. B	DIM. C	DIM. D	DIM. E

REVISED EC NO: J2009-2098 DRAWN BY: DR. NIMBELI 2009/03/18 CHECKED BY: THARUYAMA 2009/03/19 APPROVED BY: APPR. NIKITA 2009/03/23 K DESCRIPTION QIK FLECS HEADER ASSY ST WITH EJECT LEVER MATERIAL NO. SEE SHEET 2 SIZE A3	GENERAL TOLERANCES (UNLESS SPECIFIED) 10 UNDER ±0.2 10 OVER 30 UNDER ±0.25 30 OVER ±0.3 ANGULAR ±3° DRAFT WHERE APPLICABLE MUST REMAIN WITHIN DIMENSIONS	DIMENSION STYLE MM/IN DRAWN BY: H. HIRAMOTO DATE: 1989/11/10 CHECKED BY: M. TOMITA DATE: 2003/06/13 APPROVED BY: M. YOMITA DATE: 2003/06/13 TITLE: QIK FLECS HEADER ASSY ST WITH EJECT LEVER ENGLISH ONLY MOLEX INCORPORATED DOCUMENT NO.: SD-5330-003 SHEET NO.: 1 OF 2	SCALE: 2:1 DESIGN UNITS: METRIC THIRD ANGLE PROJECTION
	THIS DRAWING CONTAINS INFORMATION THAT IS PROPRIETARY TO MOLEX INCORPORATED AND SHOULD NOT BE USED WITHOUT WRITTEN PERMISSION		
	EN-02JA(021)		
	10 9 8 7 6 5 4 3 2 1		

ib\_frame\_A3\_J\_ME\_S  
Rev. E 2006/04/15

10 9 8 7 6 5 4 3 2 1

—#	—#	60
39-35-2506	5330-50BGS17F	50
▲ -2406	▲ -40BGS17F	40
-2346	▲ -34BGS17F	34
-2306	-30BGS17F	30
-2266	-26BGS17F	26
-2206	-20BGS17F	20
▼ -2166	▼ -16BGS17F	16
▼ -2146	▼ -14BGS17F	14
39-35-2106	5330-10BGS17F	10
EDP NO.	ENG. NO.	NO. OF CKTS.
5330-NBGS17F	-LEAD FREE-	60

—#	—#	—#	—#	60
39-28-5500	5330-50BT2	39-26-6506	5330-60BGS1	50
▲ -5400	▲ -40BT2	39-26-6406	5330-40BGS1	40
-5340	-34BT2	39-26-6346	5330-34BGS1	34
-5300	-30BT2	39-26-6306	5330-30BGS1	30
-5260	-26BT2	—#	—#	26
-5200	-20BT2	39-26-6206	5330-20BGS1	20
-5160	-16BT2	39-26-6166	5330-16BGS1	16
▼ -5140	▼ -14BT2	39-26-6146	5330-14BGS1	14
39-28-5100	5330-10BT2	—#	—#	10
EDP NO.	ENG. NO.	EDP NO.	ENG. NO.	NO. OF CKTS.
5330-NBT2	-LEAD FREE-	5330-NBGS1		

<b>REVISED</b> EC NO: J2009-2098 DRAWN BY: DR. HIRAMOTO 2009/03/18 CHECKED BY: CHYKO:THARYAMA 2009/03/19 APPR: NIKITA 2009/03/23	GENERAL TOLERANCES (UNLESS SPECIFIED)		DIMENSION STYLE MM/IN	SCALE 2:1	DESIGN UNITS METRIC	THIRD ANGLE PROJECTION	
	10 UNDER ±0.2 10 OVER 30 UNDER ±0.25 30 OVER ±0.3	ANGULAR ±3 ° DRAFT WHERE APPLICABLE MUST REMAIN WITHIN DIMENSIONS	DRAWN BY: H. HIRAMOTO 1989/11/10 CHECKED BY: M. TOMITA 2003/06/13 APPROVED BY: M. YOMITA 2003/06/13	DATE	TITLE QIK FLECS HEADER ASSY ST WITH EJECT LEVER ENGLISH ONLY		
	MATERIAL NO. SEE TABLE		DOCUMENT NO. SD-5330-003		MOLEX INCORPORATED		SHEET NO. 2 OF 2
	SIZE A3 THIS DRAWING CONTAINS INFORMATION THAT IS PROPRIETARY TO MOLEX INCORPORATED AND SHOULD NOT BE USED WITHOUT WRITTEN PERMISSION						

ib\_frame\_A3\_J\_ME\_S Rev. E 2006/04/15

9 8 7 6 5 4 3 2 1 EN-02JA(021)