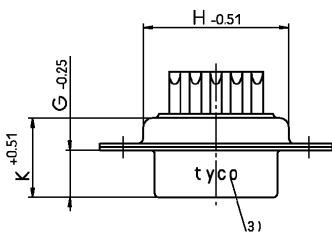
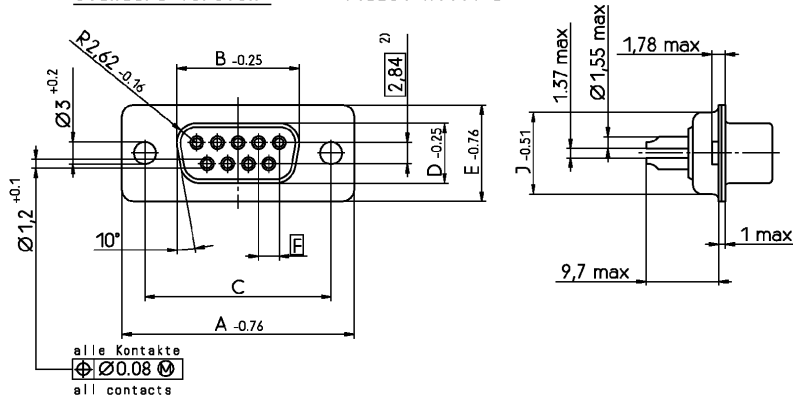


Standardausführung: V42254-A1115-B***
 standard version: V42254-A1117-B***



Sachnr. order code V42254-A111*-	Polzahl no. of contacts	dimension Maß									
		A	B	C	D	E	F	G	H	J	K
B*09	09	31.19	16.46	25.0 ± 0.13	8.02	12.93	2.74	6.3	19.53	10.97	10.64
B*15	15	39.52	24.79	33.3 ± 0.15	8.02	12.93	2.74	6.3	27.76	10.97	10.64
B*25	25	53.42	38.5	47.04 ± 0.13	8.02	12.93	2.76	6.3	41.53	10.97	10.64
B*37	37	69.7	54.96	63.5 ± 0.13	8.02	12.93	2.76	6.3	57.96	10.97	10.64
B*50	50 ²⁾	67.31	52.55	61.1 ± 0.11	10.87	15.75	2.76	6.3	55.58	13.82	10.64

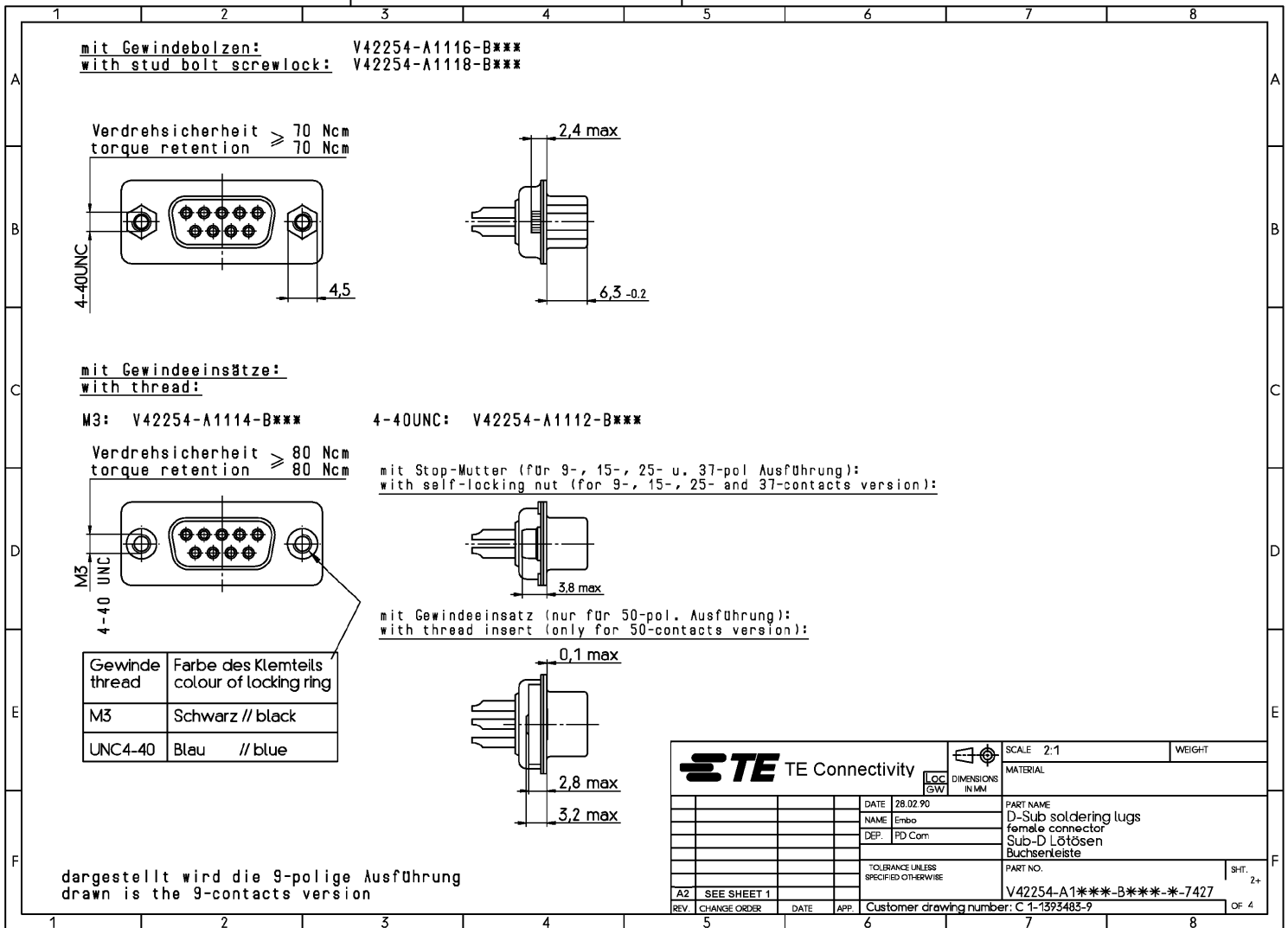
Anforderungsstufe ¹⁾
 performance level

dargestellt wird die 9-polige Ausführung
 drawn is the 9-contacts version

- 1) nach DIN 41652 T.2 und T.4
- 2) Bemerkung: 50-polig: dreireihig
- 3) Beschriftung nicht bei V42254-A1117-B***
 und V42254-A1118-B***

- 1) according to DIN 41652 p.2 and p.4
- 2) remark: 50-contacts version: 3 contact rows
- 3) no marking for V42254-A1117-B***
 and V42254-A1118-B***

		SCALE 2:1	WEIGHT
		MATERIAL	
DATE 28.02 90 NAME Embo DEP. PD Com		PART NAME D-Sub soldering lugs female connector Sub-D Lötösen Buchsenleiste	
A2 ECO-11-005294 25APR11 HMR REV. CHANGE ORDER DATE APP.		PART NO. V42254-A1***-B***-7427	
TOLEANCE UNLESS SPECIFIED OTHERWISE		SHT. 1+ OF 4	
Customer drawing number: C 1-1393483-9			



STE TE Connectivity		SCALE 2:1	WEIGHT
LOC GW		DIMENSIONS IN MM	
DATE 28.02 90		PART NAME	
NAME Embo		D-Sub soldering lugs	
DEP. PD Com		female connector	
		Sub-D Lötösen	
		Buchsenleiste	
		PART NO.	
		V42254-A1***-B***-7427	
TOLERANCE UNLESS SPECIFIED OTHERWISE		SHT. 2+	
A2	SEE SHEET 1	Customer drawing number: C 1-1393483-9	
REV.	CHANGE ORDER	DATE	APP.
5	6	7	8
		OF 4	

V 4 2 2 5 4 - A 1 * * * - B * * *

Anschlußausführung // connection type
 1 Lötöse // soldering lugs

Anschlußoberfläche / Raster // connection surface / center spacing
 1 verzinkt // 2.76 x 2.84 // tinned // 2.76 x 2.84


Steckverbinderunterscheidung // connector type

	verzinkt tinned	mit TE CONNECTIVITY Beschriftung auf Blechteil	with TE CONNECTIVITY marking on the shell	mit Gewinde- einsatz with thread	mit Gewinde- bolzen with stud bolt screwlock
2	ja // yes	ja // yes	ja // yes	ja // yes 4-40UNC	nein // no
4	ja // yes	ja // yes	ja // yes	M3	nein // no
5	ja // yes	ja // yes	nein // no	nein // no	nein // no
6	OBSOLETE	ja // yes	ja // yes	nein // no	ja // yes 4-40UNC
7	OBSOLETE	ja // yes	nein // no	nein // no	nein // no
8	OBSOLETE	ja // yes	nein // no	nein // no	ja // yes 4-40UNC



Polzahl - Gehäusegröße // no. of contacts / size
09 9-polig - Gehäusegröße 1 // 9-contacts / size 1
15 15-polig - Gehäusegröße 2 // 15-contacts / size 2
25 25-polig - Gehäusegröße 3 // 25-contacts / size 3
37 37-polig - Gehäusegröße 4 // 37-contacts / size 4
50 50-polig - Gehäusegröße 5 // 50-contacts / size 5


Kontaktfläche / Kontaktart // contact surface / contact type
1 Anforderungsstufe 1 / gerollte Kontakte // performance level I / rolled contacts
2 Anforderungsstufe 2 / gerollte Kontakte // performance level II / rolled contacts

Steckerart // connector type
 B Buchsenleiste // female connector

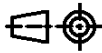
APPLICABLE SPEC.:		FINISH	
DIMENSIONS APPLY		PLATING	
SCALE		WEIGHT	
MATERIAL		PART NAME	
		D-Sub soldering lugs	
DATE 28.02.90 NAME Embo DEP. PD Com EC TOLERANCE UNLESS SPECIFIED OTHERWISE		female connector	
A2 SEE SHEET 1 REV. CHANGE ORDER DATE APP. Customer drawing number: C 1-1593483-9		Sub-D Lötösen	
		Buchsenleiste	
		PART NO. V42254-A1***-B***-7427	
		SHT. 3+	
		OF 4	

Active part numbers. Contact
TE CONNECTIVITY for
other configuration availability

Old Part Number	TE CONNECTIVITY Number	
V42254-A1112-B209	1-1393483-9	
V42254-A1112-B215	2-1393483-0	
V42254-A1112-B225	2-1393483-1	
V42254-A1112-B237	2-1393483-2	
V42254-A1112-B250	4393740-3	
V42254-A1114-B209	2-1393483-6	OBSOLETE
V42254-A1114-B215	2-1393483-7	OBSOLETE
V42254-A1114-B225	2-1393483-8	OBSOLETE 
V42254-A1114-B250	1393740-5	OBSOLETE
V42254-A1115-B109	3-1393483-6	
V42254-A1115-B125	3-1393483-7	
V42254-A1115-B209	3-1393483-8	
V42254-A1115-B215	3-1393483-9	
V42254-A1115-B225	4-1393483-0	
V42254-A1115-B237	4-1393483-1	
V42254-A1115-B250	1393740-7	

 OBSOLETE PARTS: OBSOLETE CIS STREAMLINING PER D.RENAUD/D.SINISI

TE TE Connectivity



LOC
GW

DIMENSIONS
IN MM

SCALE

WEIGHT

MATERIAL

DATE 28.02.90

NAME Embo

DEP. PD Com

TOLERANCE UNLESS
SPECIFIED OTHERWISE

PART NAME D-Sub soldering lugs
female connector

Sub-D Lötösen
Buchsenleiste

PART NO.

SH. 4

V42254-A1***-B***-*7427

OF 4

A2 SEE SHEET 1

REV. CHANGE ORDER DATE APP. Customer drawing number: C 1-1393483-9

1

2

3

4