

REFERENCE SPECIFICATIONS

-NFC 93425 (in compliance with HE 501)

PHYSICAL CHARACTERISTICS

-INSULATOR MATERIAL: THERMOPLASTIC UL94V0

-CONTACT MATERIAL: BRASS
GOLD OVER NICKEL

-ACCESSORIES: BRASS, cadmium plated yellow passivation

-SHELLS: STEEL, cadmium plated yellow passivation

ELECTRICAL CHARACTERISTICS

-NOMINAL CURRENT: 7.5A

-CONTACT RESISTANCE: <= 7.3 m ohms

-CONTACT/CONTACT : >=1000 V

-CONTACT/GROUND : >=1200 V

-INSULATION RESISTANCE: >=5000 MOhms

ENVIRONMENTAL CHARACTERISTICS

- CLIMATIC CATEGORY: 55/125/56

TEMPERATURE RANGE -55°C TO +125°C

DAMP HEAT STEADY STATE 56 DAYS

SALT SPRAY 48 HOURS

MECHANICAL CHARACTERISTICS

- RETENTION AGAINST TORQUE: - Threaded insert: 0.7 N.m minimum

- Female screw : 0.5 N.m minimum

Series **DBML25P043**

Shell size: **E A B C D**
see sheet 2

Front accessory definition
see sheet 2

- Blank** : without accessory
- F** : floating mounting
- L** : threaded insert M3
- O** : threaded insert UNC 4-40
- V** : female screw UNC 4-40

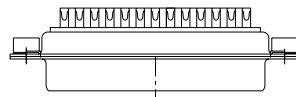
Contact number (see sheet 2)
9,15,25,37,50

Contacts

P : Pin

Plating

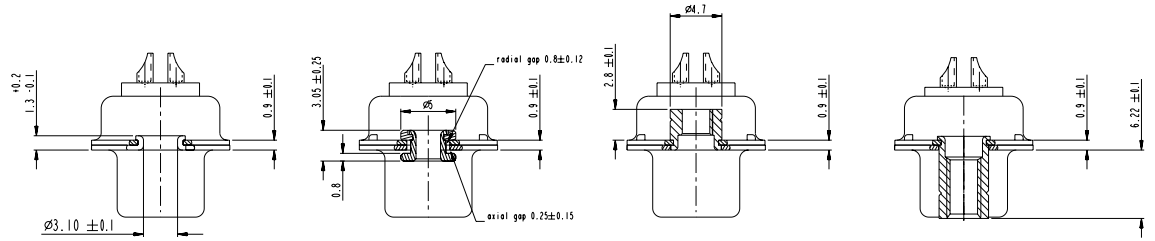
- Blank** : solder bucket 500 matings/unmatings
- 043** : solder bucket 500 matings/unmatings for harsh environment



25 WAY for Example

Copyright FCI

www.fciconnect.com				surface 150 1302	tolerance std 150 406	projection 150 1101	mm
				TOLERANCES UNLESS OTHERWISE SPECIFIED			
ref	den no	dr	date	ANGULAR	LINEAR	size	Scale
A	308-0174	MPE	2006/11/14	0.xx	±0.3	A2	2:1
B	307-0273	MPE	2007/10/30	0.xxx	±0.1	ECN	LS08-0044
C	308-0144	MPE	2008/02/02	Product family		Spec ref	
				FCI SUB MALE DM HES01 series		001-8637-1737	Rev. C
				with solder bucket		CUSTOMER	sheet 1 of 4
				catalog no			



FRONT ACCESSORY	Blank without	F floating mounting	L insert M3 O insert UNC 4.40	V female screw UNC 4.40
-----------------	----------------------	----------------------------	--	--------------------------------

PART NUMBER	FRONT ACCESSORY
D*MxxP	without
D*MFxxP	floating mounting
D*MLxxP	insert M3
D*MOxxP	insert UNC 4.40
D*MVxxP	female screw UNC 4.40

shell size	Contact number
#	XX
E	09
A	15
B	25
C	37
D	50

PART NUMBER	FRONT ACCESSORY
D*MxxP043	without
D*MFxxP043	floating mounting
D*MLxxP043	insert M3
D*MOxxP043	insert UNC 4.40
D*MVxxP043	female screw UNC 4.40

CROSS REFERENCES HE501 and FCI

HE501 P/N	FCI P/N	FRONT ACCESSORY
HE501NxxAS	D*MxxP	without
HE501FxxAS	D*MFxxP	floating mounting

www.fciconnect.com

surface	150 1302	tolerance std	150 400 150 1101	projection	mm
TOLERANCES UNLESS OTHERWISE SPECIFIED					
Dr	M PESSON	2006/11/14	ANGULAR	0.x ±0.3	size A2 Scale 2:1
Eng	P LEGARE	2006/11/14	LINEAR	0.xx ±0.1	ECN LS08-0044
Chr	P LEGARE	2006/11/14	0° ±2°	0.xxx ±0.05	Spec ref
Appr	P LEGARE	2006/11/14	Product family		

SCALE: 4

FCI SUB MALE DM HE501 series with solder bucket

part no. C01-8637-1737

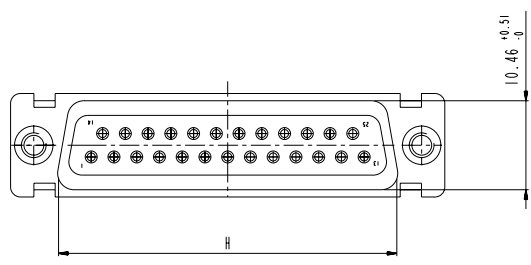
Rev. C

CUSTOMER

sheet 2 of 4

PDM: Rev:C STATUS Released 8 Printed: Oct 01, 2010

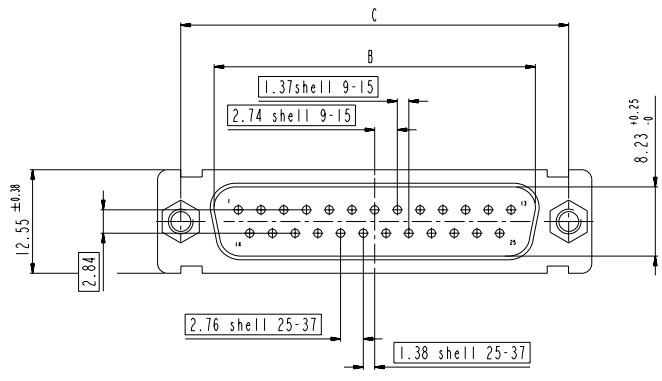
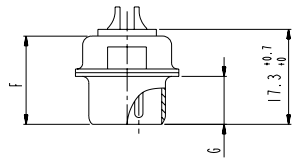
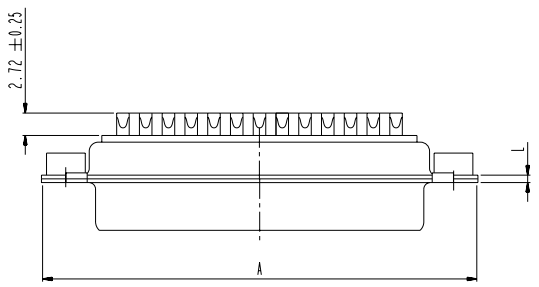
Copyright FCI



DIMENSIONS FOR SHELL E, A, B, C

Dimensions are in millimeters

Shell size	Number of contacts	A ^{+0.76} ₋₀	B ^{+0.25} ₋₀	C ±0.12	F ^{+0.57} ₋₀	G ^{+0.25} ₋₀	H ^{+0.51} ₋₀	L ^{+0.22} ₋₀
E	09	30.43	16.79	24.99	10.47	5.9 ^{+0.15} ₋₀	19.02	0.80
A	15	38.76	25.12	33.32	10.47	5.9 ^{+0.15} ₋₀	27.25	0.80
B	25	52.65	38.84	47.04	10.43	5.7 ^{+0.25} ₋₀	41.02	0.80
C	37	68.94	55.30	63.50	10.56	5.7 ^{+0.25} ₋₀	57.45	0.90



www.fciconnect.com

surface	150 1302	tolerance std	150 400	150 1101	projection	mm
TOLERANCES UNLESS OTHERWISE SPECIFIED						
Dr	M PESSON	2006/11/14	ANGULAR	0.x	±0.3	size
Eag	P LEGARE	2006/11/14	LINEAR	0.xx	±0.1	A2
Chr	P LEGARE	2006/11/14	°	±2°	0.xxx	±0.05
Appr	P LEGARE	2006/11/14	Product family	Spec ref		

scale 3

FCI SUB MALE DM HES01 series with solder bucket

01-20 C01-8637-1737

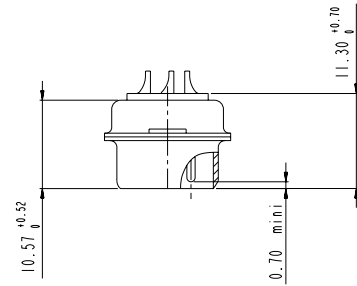
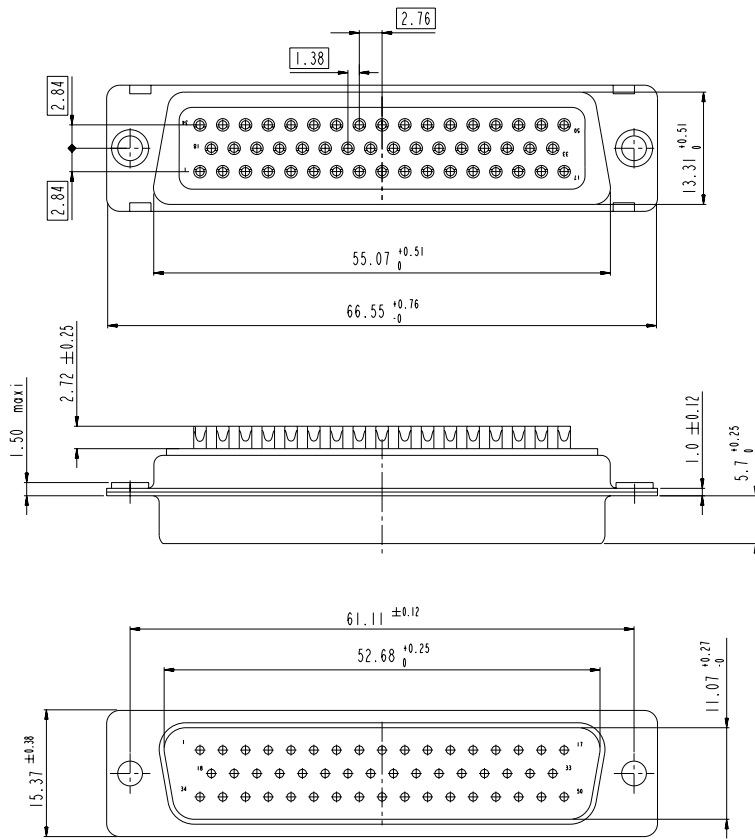
CUSTOMER sheet 3 of 4

Rev. C

PDM: Rev:C STATUS Released 8 Printed Oct 01, 2010

Copyright FCI

DIMENSIONS FOR SHELL SIZE D (50 CONTACTS)



www.fciconnect.com		surface 150 1302	tolerance std 150 406	projection 150 1101	mm
TOLERANCES UNLESS OTHERWISE SPECIFIED					
Dr	M PESSON	2006/11/14	ANGULAR	0.x	±0.3
Eag	P LEGARE	2006/11/14	LINEAR	0.xx	±0.1
Chr	P LEGARE	2006/11/14	°	0.xxx	±0.05
Appr	P LEGARE	2006/11/14	Product family		Spec ref
SUB MALE DM HES01 series				ang 20	Rev.
with solder bucket				C01-8637-1737	C
catalogue				CUSTOMER	sheet 4 of 4

scale 3