

4

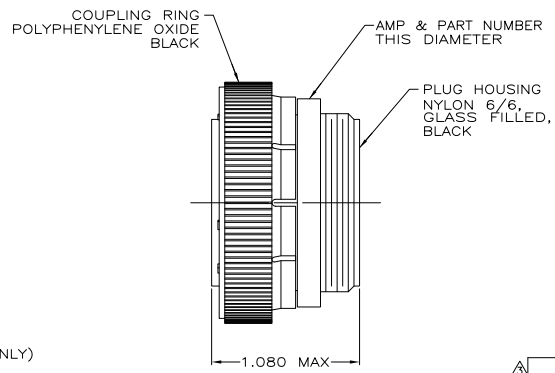
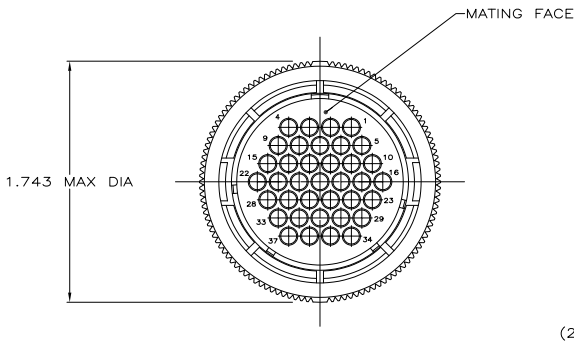
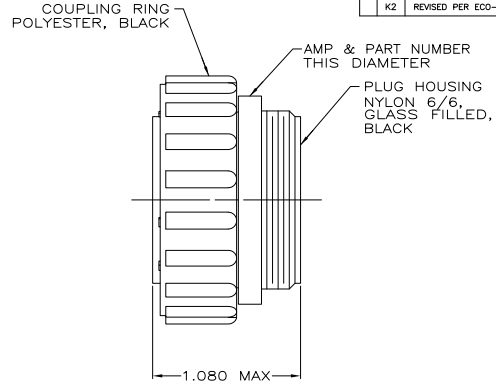
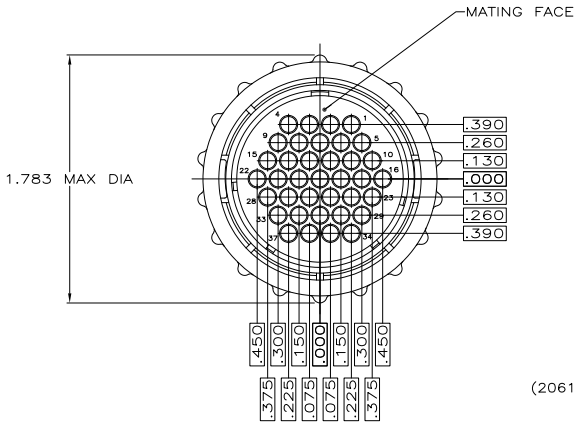
3

2

1

THIS DRAWING IS UNPUBLISHED. RELEASED FOR PUBLICATION
 © COPYRIGHT - By - ALL RIGHTS RESERVED.

LOC		DIBT		REVISIONS			
FT	0	P	LTR	DESCRIPTION	DATE	BY	APPD
		K2		REVISED PER ECO-11-004587	11MAR11	RK	HMR



- CONTACT CAVITIES IDENTIFIED BY CHARACTERS ON FRONT AND REAR FACES OF CONNECTOR.
 - THIS CONNECTOR WILL ACCEPT (37) MULTIMATE SOCKET CONTACTS.
- ⚠ WHITE DOT NEAR POSITION 1 ON WIRE ENTRY FACE.

STANDARD	206150-6
STANDARD	206150-3
SMALL PACK	206150-2
STANDARD	206150-1
PACKAGING	PART NUMBER

THIS DRAWING IS A CONTROLLED DOCUMENT.

DR: S. BRIDGLEY	8/2/90
OK: B. STONE	4-26-91
NAME: _____	PRODUCT SPEC: _____
APPLICATION SPEC: _____	WEIGHT: _____
MATERIAL: SEE CALLOUT	FINISH: _____

TE Connectivity

PLUG ASSEMBLY, SHELL SIZE 23, STANDARD SEX, SERIES 1, CPC

SIZE: A2	CAGE CODE: 00779	DRAWING NO: C-206150	RESTRICTED TO: _____
CUSTOMER DRAWING			SCALE: 2:1 SHEET: 1 of 1 REV: K2

1471-9 (3/11)

206150

A