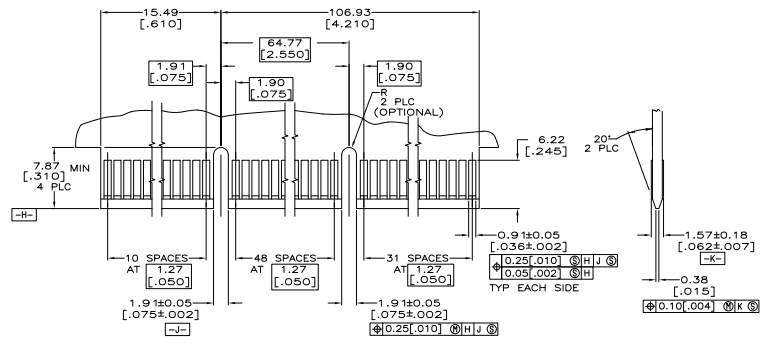


RECOMMENDED CONNECTOR MOUNTING HOLE PATTERN
 (CONNECTOR SIDE SHOWN)

- △ HOUSING: HIGH TEMPERATURE THERMOPLASTIC.
COLOR - NATURAL.
- △ CONTACT: PHOSPHOR BRONZE.
- △ CONTACT FINISH: 0.00127[.000050] MIN NICKEL ALL OVER.
GOLD FLASH OVER NICKEL IN CONTACT AREA.
0.00254[.000100] MIN MATTE TIN OVER NICKEL ON SOLDER TAILS.
- △ CONTACT FINISH: 0.00127[.000050] MIN NICKEL ALL OVER.
0.00381[.000150] GOLD OVER NICKEL IN CONTACT AREA.
0.00254[.000100] MIN MATTE TIN OVER NICKEL ON SOLDER TAILS.
- △ CONTACT FINISH: 0.00127[.000050] MIN NICKEL ALL OVER.
0.00076[.000030] GOLD OVER NICKEL IN CONTACT AREA.
0.00254[.000100] MIN MATTE TIN OVER NICKEL ON SOLDER TAILS.
- △ DISTANCE FROM CONTACT POINT TO BOTTOM OF CARD SLOT.
AMP PART NUMBER, DATE CODE AND CSA LOGO MARKED IN APPROXIMATE LOCATION SHOWN.
- △ CORED OR SOLID SIDE WALLS ARE AT DISCRETION OF AMP INCORPORATED.



RECOMMENDED MATING BOARD EDGE CONFIGURATION

THIS DRAWING IS A CONTROLLED DOCUMENT.		REV. FRAGMENT OR PER IS	DATE	TE Connectivity
DRAWING NO. 114-26012		REV. FRAGMENT OR PER IS	DATE	TE Connectivity
DESCRIPTION	CONNECTOR ASSEMBLY, 92 DUAL POSITION, 500 SERIES, STANDARD EDGE.	PROJECT FILE	108-14034	
DATE	114-26012	OPERATION SHEET		
ISSUE	A1	DATE	00779	5145165
CUSTOMER DRAWING		SIZE	4.1	SHEET 2 OF 2