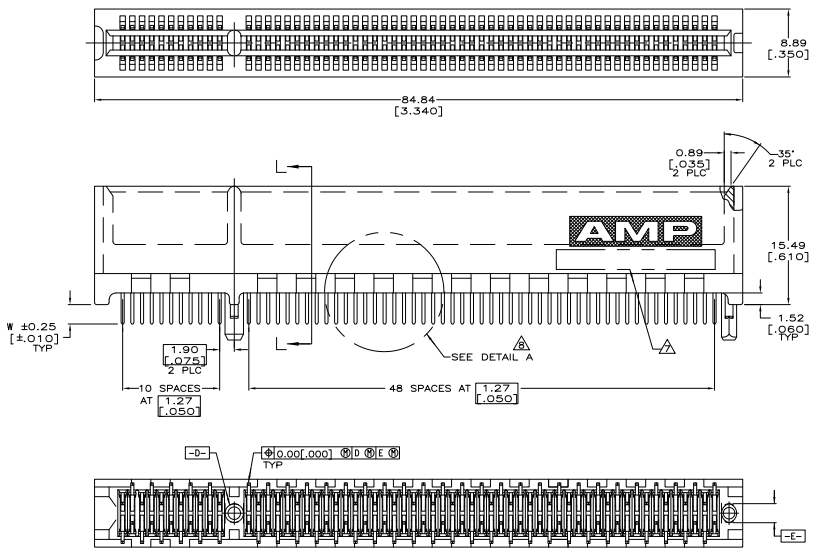


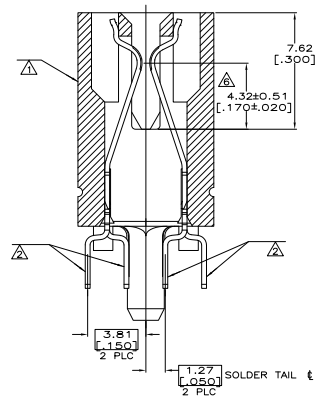
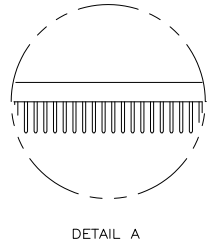
THIS DRAWING IS UNPUBLISHED  
 ALL RIGHTS RESERVED

REV	DATE	DESCRIPTION	BY	CHK
AA	00			
C1		REVISED PER EDD-11-005033	24MMR11	RK HMR



- △ HOUSING: HIGH TEMPERATURE THERMOPLASTIC. COLOR - NATURAL.
- △ CONTACT: PHOSPHOR BRONZE.
- △ CONTACT FINISH: .001269 [.000050] MIN NICKEL ALL OVER. GOLD FLASH OVER NICKEL IN CONTACT AREA. .002537 [.000100] MIN TIN OVER NICKEL ON SOLDER TAILS.
- △ CONTACT FINISH: .001269 [.000050] MIN NICKEL ALL OVER. .000375 [.000015] MIN GOLD OVER NICKEL IN CONTACT AREA. .002537 [.000100] MIN TIN OVER NICKEL ON SOLDER TAILS.
- △ CONTACT FINISH: .001269 [.000050] MIN NICKEL ALL OVER. .000757 [.000030] MIN GOLD OVER NICKEL IN CONTACT AREA. .002537 [.000100] MIN TIN OVER NICKEL ON SOLDER TAILS.
- △ DISTANCE FROM CONTACT POINT TO BOTTOM OF CARD SLOT.
- △ TE CONNECTIVITY PART NUMBER, DATE CODE AND CSA LOGO SHOULD BE MARKED ON THE SIDE OF THE HOUSING NEAR THE AMP LOGO.
- △ CORED OR SOLID SIDE WALLS ARE AT DISCRETION OF TE CONNECTIVITY.

SEE SHEET 2 FOR HOLE PATTERN



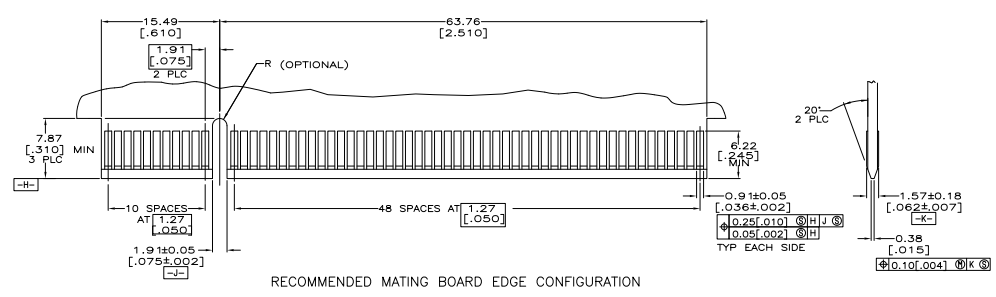
3.66 [.140]	△	1-5145154-2
3.18 [.125]	△	5145154-B
2.54 [.100]	△	5145154-4
2.54 [.100]	△	5145154-2
2.54 [.100]	△	5145154-1
W	FINISH:	PART NUMBER

THIS DRAWING IS A CONTROLLED DOCUMENT.

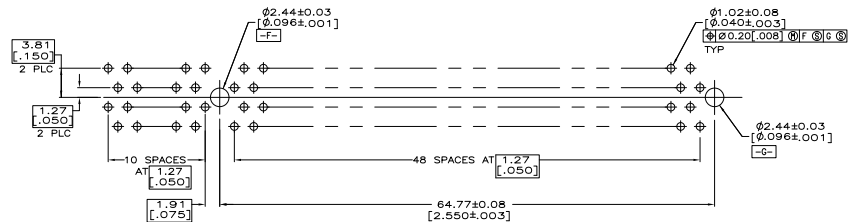
INCHES	FRANITUM 23 MAY 93	TE Connectivity
MILLIMETERS	FRANITUM 23 MAY 93	
PROJECT TITLE	108-14034	CONNECTOR ASSEMBLY, 60 DUAL POSITION, 1.27 [0.050] SERIES, CARD EDGE
REV	114-26012	SIZE DATE SIZE DRAWING NO
REV		A1 00779 5145154
REV		CUSTOMER DRAWING

THIS DRAWING IS UNPUBLISHED  
 ALL RIGHTS RESERVED

REV	DATE	DESCRIPTION	BY	APP'D
AA	00	SEE SHEET 1	-	-



RECOMMENDED MATING BOARD EDGE CONFIGURATION



RECOMMENDED CONNECTOR MOUNTING HOLE PATTERN  
 (CONNECTOR SIDE SHOWN)

THIS DRAWING IS A CONTROLLED DOCUMENT.		REV: FRANTUM 23 MAY 04	DATE: 23 MAY 04	TE Connectivity	
DRAWING LABEL:		REV: FRANTUM 23 MAY 04	DATE: 23 MAY 04	TE Connectivity	
DESCRIPTION:	PROJECT FILE:	108-14034	CONNECTOR ASSEMBLY,		
REV: 1	REV: 1	114-26012	60 DUAL POSITION,		
REV: 2	REV: 2	114-26012	1.27 (0.050) SERIES, CARD EDGE		
REV: 3	REV: 3	114-26012	SIZE: A1	DATE REE: 00779	DRAWING NO: 5145154
REV: 4	REV: 4	114-26012	CUSTOMER DRAWING	TABLE: 4.1	SHEET: 2 OF 2