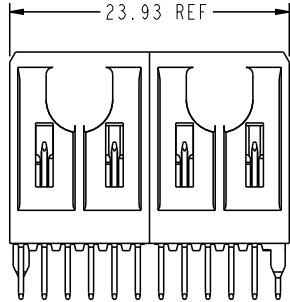
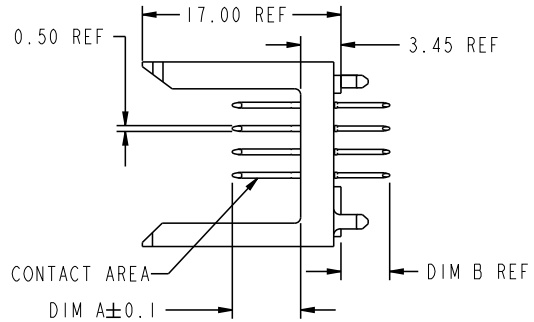
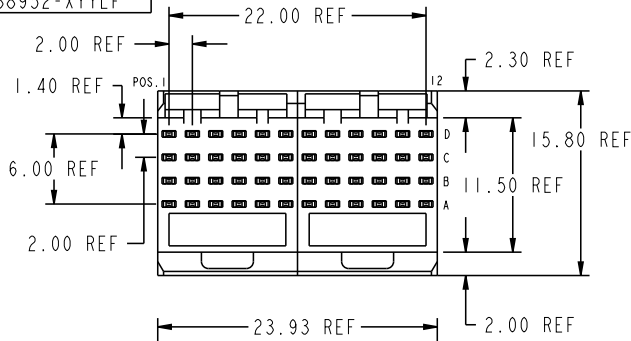




This document is the property of and embodies
 CONFIDENTIAL and PROPRIETARY information of FCI.
 No part of the information shown on this
 document may be used in any way or disclosed
 to others without the written consent of FCI.
 Copyright FCI.

PRODUCT NUMBER
88952-XYX
88952-XYLX



PLATING IN CONTACT AREA		
DASH NUMBER	PERFORMANCE LEVEL	NOTES
-NIYY	TELCORDIA CO (NXT)	-
-IYY	TELCORDIA CO	-
-2YY	TELECOM CLASS	-
-3YY	IEC CLASS I	-
-5YY	TELCORDIA UE	-
-NIYYLF	TELCORDIA CO IEC CLASS I	SEE NOTE 8
-IYYLF	TELCORDIA CO	SEE NOTE 8
-2YYLF	TELECOM CLASS	SEE NOTE 8
-5YYLF	TELCORDIA UE	SEE NOTE 8

mat'l code		--		tolerances unless otherwise specified		CUSTOMER		FCI	
lfr	ecm no.	dr	date	linear	0.X ± 0.3	projection	COPY	www.fciconnect.com	
T	V06-0569	DCH2	06-06-13		0.XX ± 0.13			title METRAL SIGNAL HEADER	
U	DG09-0256	TER	2009-08-19		.XXX ± .051			2 MOD. 4 ROW STB	
				angles	0° ± 2°			product family METRAL	
N	V21670	TAB	07/18/02	dr	T.BRUNGARD	11/19/99		size	code
P	V03-1059	DAI	09/24/03	engr	M.STRAWER	11/19/99		dwg no	213
R	V05-0193	LP	04/08/05	chr	M.STRAWER	11/19/99	scale	88952	sheet
S	V06-0123	DAI	02/09/06	oppd	M.STRAWER	02/29/00	2:1	A	1 of 6
sheet	revision	U	U	U	U	U			
index	sheet	1	2	3	4	5	6		

REV E - 2006-04-18

Pro/E

PDM: Rev:U

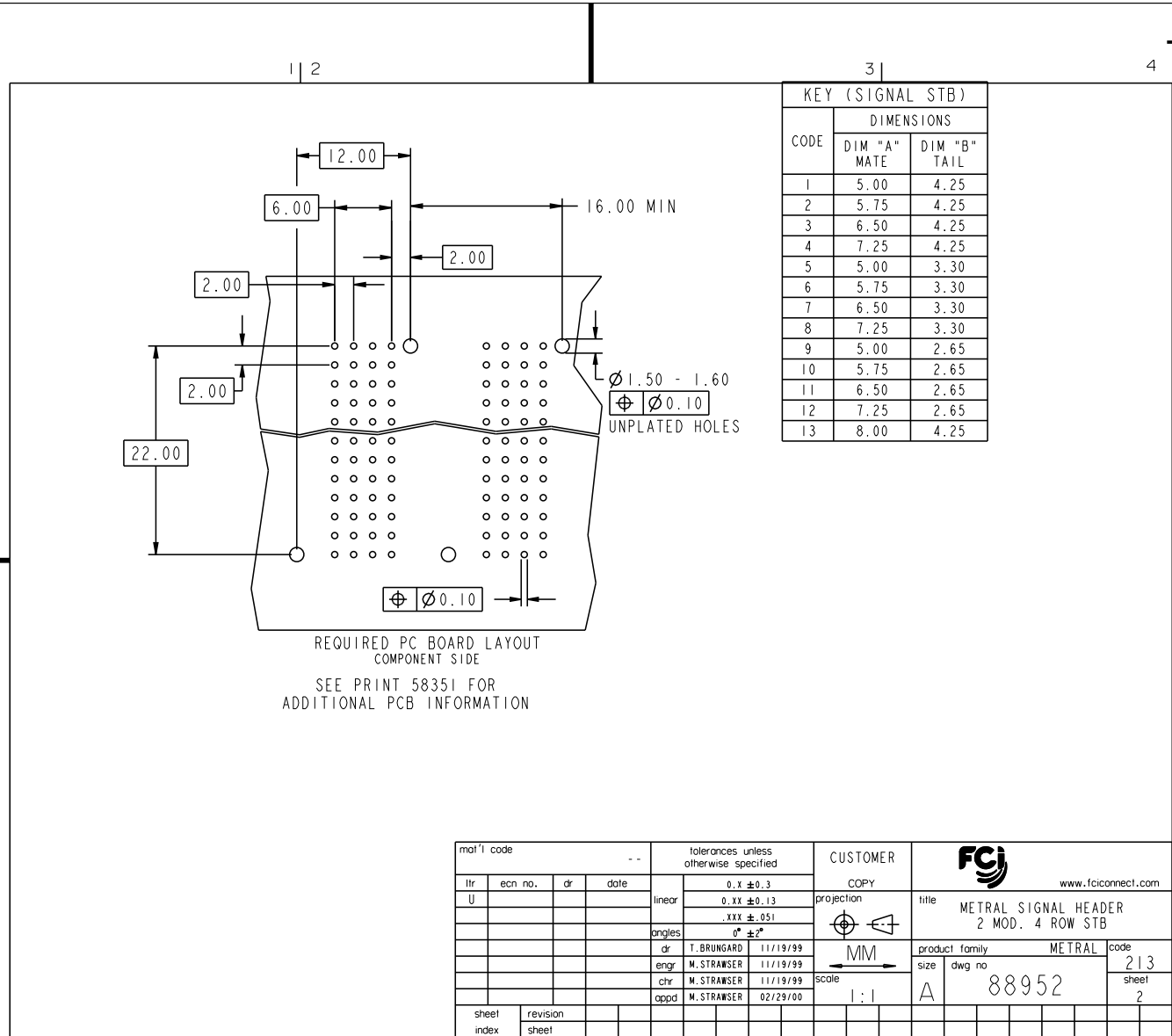
STATUS: Released

Printed: Nov 30, 2009

code code 22526



This document is the property of and embodies CONFIDENTIAL and PROPRIETARY information of FCJ. No part of the information shown on this document may be used in any way or disclosed to others without the written consent of FCJ. Copyright FCJ.



KEY (SIGNAL STB)		
CODE	DIMENSIONS	
	DIM "A" MATE	DIM "B" TAIL
1	5.00	4.25
2	5.75	4.25
3	6.50	4.25
4	7.25	4.25
5	5.00	3.30
6	5.75	3.30
7	6.50	3.30
8	7.25	3.30
9	5.00	2.65
10	5.75	2.65
11	6.50	2.65
12	7.25	2.65
13	8.00	4.25

REQUIRED PC BOARD LAYOUT
COMPONENT SIDE
SEE PRINT 58351 FOR
ADDITIONAL PCB INFORMATION

mat'l code		--		tolerances unless otherwise specified		CUSTOMER		FCJ		www.fcjconnect.com	
ltr	ecn no.	dr	date	linear	0.XX ±0.13	projection	COPY	title	METRAL SIGNAL HEADER		
U				angles	.XXX ±.051	MM		2 MOD. 4 ROW STB			
				dr	° ±2°	MM		product family	METRAL		code
				engr	T. BRUNGARD 11/19/99	scale		size	dwg no	88952	213
				chr	M. STRAWSER 11/19/99	1:1		sheet	2		
				oppd	M. STRAWSER 02/29/00			code	22526		4
sheet index	revision sheet										

REV E - 2006-04-18

PDM: Rev:U STATUS:Released Printed: Nov 30, 2009



This document is the property of and embodies CONFIDENTIAL and PROPRIETARY information of FCI. No part of the information shown on this document may be used in any way or disclosed to others without the written consent of FCI. Copyright FCI.

METRAL P/N	ROW	CONTACT CODE MOD. 1					MOD. 2							
		1	2	3	4	5	6	7	8	9	10	11	12	
88952-X17 SEE NOTE 9 LEAD FREE OPTION	D	2	2	2	2	2	2	2	2	2	2	2	2	2
	C	2	2	2	2	2	2	2	2	2	2	2	2	2
	B	2	2	2	2	2	2	2	2	2	2	2	2	2
	A	3	3	3	3	3	3	3	3	3	3	3	3	3
88952-X31 SEE NOTE 9 LEAD FREE OPTION	D	5	5	5	5	5	5	5	5	5	5	5	5	5
	C	5	5	5	5	5	5	5	5	5	5	5	5	5
	B	5	5	5	5	5	5	5	5	5	5	5	5	5
	A	5	5	5	5	5	5	5	5	5	5	5	5	5
88952-X32 SEE NOTE 9 LEAD FREE OPTION	D	5	5	5	5	5	5	5	5	5	5	5	5	5
	C	5	5	5	5	5	5	5	5	5	5	5	5	5
	B	5	5	5	5	5	5	5	5	5	5	5	5	5
	A	7	7	7	7	7	7	7	7	7	7	7	7	7
88952-X33 SEE NOTE 9 LEAD FREE OPTION	D	7	7	7	7	7	7	7	7	7	7	7	7	7
	C	6	6	6	6	6	6	6	6	6	6	6	6	6
	B	6	6	6	6	6	6	6	6	6	6	6	6	6
	A	7	7	7	7	7	7	7	7	7	7	7	7	7
88952-X34 SEE NOTE 9 LEAD FREE OPTION	D	8	8	8	8	8	8	8	8	8	8	8	8	8
	C	7	7	7	7	7	7	7	7	7	7	7	7	7
	B	7	7	7	7	7	7	7	7	7	7	7	7	7
	A	8	8	8	8	8	8	8	8	8	8	8	8	8
88952-X35 SEE NOTE 9 LEAD FREE OPTION	D	7	7	7	7	7	7	7	7	7	7	7	7	7
	C	7	7	7	7	7	7	7	7	7	7	7	7	7
	B	7	7	7	7	7	7	7	7	7	7	7	7	7
	A	7	7	7	7	7	7	7	7	7	7	7	7	7
88952-X36 SEE NOTE 9 LEAD FREE OPTION	D	6	6	6	6	6	6	6	6	6	6	6	6	6
	C	6	6	6	6	6	6	6	6	6	6	6	6	6
	B	6	6	6	6	6	6	6	6	6	6	6	6	6
	A	6	6	6	6	6	6	6	6	6	6	6	6	6
88952-X37 SEE NOTE 9 LEAD FREE OPTION	D	7	7	7	7	7	7	7	7	7	7	7	7	7
	C	6	6	6	6	6	6	6	6	6	6	6	6	6
	B	6	6	6	6	6	6	6	6	6	6	6	6	6
	A	5	5	5	5	5	5	5	5	5	5	5	5	5
88952-X38 SEE NOTE 9 LEAD FREE OPTION	D	7	7	7	7	7	7	7	7	7	7	7	7	7
	C	5	5	5	5	5	5	5	5	5	5	5	5	5
	B	5	5	5	5	5	5	5	5	5	5	5	5	5
	A	5	5	5	5	5	5	5	5	5	5	5	5	5
88952-X39 SEE NOTE 9 LEAD FREE OPTION	D	8	8	8	8	8	8	8	8	8	8	8	8	8
	C	8	8	8	8	8	8	8	8	8	8	8	8	8
	B	8	8	8	8	8	8	8	8	8	8	8	8	8
	A	8	8	8	8	8	8	8	8	8	8	8	8	8
88952-X40 SEE NOTE 9 LEAD FREE OPTION	D	5	5	5	5	5	5	5	5	5	5	5	5	5
	C	6	6	6	6	6	6	6	6	6	6	6	6	6
	B	7	7	7	7	7	7	7	7	7	7	7	7	7
	A	8	8	8	8	8	8	8	8	8	8	8	8	8
88952-X41 SEE NOTE 9 LEAD FREE OPTION	D	7	7	7	7	7	7	7	7	7	7	7	7	7
	C	5	5	5	5	5	5	5	5	5	5	5	5	5
	B	7	7	7	7	7	7	7	7	7	7	7	7	7
	A	7	7	7	7	7	7	7	7	7	7	7	7	7
88952-X42 SEE NOTE 9 LEAD FREE OPTION	D	8	8	8	8	8	8	8	8	8	8	8	8	8
	C	7	7	7	7	7	7	7	7	7	7	7	7	7
	B	6	6	6	6	6	6	6	6	6	6	6	6	6
	A	5	5	5	5	5	5	5	5	5	5	5	5	5
88952-X43 SEE NOTE 9 LEAD FREE OPTION	D	5	5	5	5	5	5	5	5	5	5	5	5	5
	C	5	5	5	5	5	5	5	5	5	5	5	5	5
	B	7	7	7	7	7	7	7	7	7	7	7	7	7
	A	5	5	5	5	5	5	5	5	5	5	5	5	5
88952-X44 SEE NOTE 9 LEAD FREE OPTION	D	5	5	5	5	5	5	5	5	5	5	5	5	5
	C	5	5	5	5	5	5	5	5	5	5	5	5	5
	B	6	6	6	6	6	6	6	6	6	6	6	6	6
	A	5	5	5	5	5	5	5	5	5	5	5	5	5

mat'l code	--	tolerances unless otherwise specified	CUSTOMER	FCI
lfr	ecn no.	dr	date	www.fciconnect.com
				COPY
	linear	0. x ± 0.3	projection	title
		. xxx $\pm .051$		METRAL SIGNAL HEADER
	angles	$\phi^{\circ} \pm 2^{\circ}$	product family	2 MOD. 4 ROW STB
	dr	T. BRUNGARD 11/19/99	size	METRAL code
	eng	M. STRAWSER 11/19/99	dwg no	213
	chr	M. STRAWSER 11/19/99	scale	sheet
	appd	M. STRAWSER 02/29/00	1:1	4
sheet index	revision			
	sheet			



This document is the property of and embodies CONFIDENTIAL and PROPRIETARY information of FCI. No part of the information shown on this document may be used in any way or disclosed to others without the written consent of FCI. Copyright FCI.

METRAL P/N	ROW	CONTACT CODE MOD. 1				MOD. 2			
		1	2	3	4	5	6	7	8
88952-X46 SEE NOTE 9 LEAD FREE OPTION	D	6	6	6	6	6	6	6	6
	C	7	7	7	7	7	7	7	7
	B	8	8	8	8	8	8	8	8
	A	7	7	7	7	7	7	7	7

METRAL P/N	ROW	CONTACT CODE MOD. 1				MOD. 2			
		1	2	3	4	5	6	7	8
88952-X64 SEE NOTE 9 LEAD FREE OPTION	D	12	12	12	12	12	12	12	12
	C	11	11	11	11	11	11	11	11
	B	11	11	11	11	11	11	11	11
	A	12	12	12	12	12	12	12	12

METRAL P/N	ROW	CONTACT CODE MOD. 1				MOD. 2			
		1	2	3	4	5	6	7	8
88952-X69 SEE NOTE 9 LEAD FREE OPTION	D	12	12	12	12	12	12	12	12
	C	12	12	12	12	12	12	12	12
	B	12	12	12	12	12	12	12	12
	A	12	12	12	12	12	12	12	12

METRAL P/N	ROW	CONTACT CODE MOD. 1				MOD. 2			
		1	2	3	4	5	6	7	8
88952-X47 SEE NOTE 9 LEAD FREE OPTION	D	6	6	6	6	6	6	6	6
	C	6	6	6	6	6	6	6	6
	B	6	6	6	6	6	6	6	6
	A	7	7	7	7	7	7	7	7

METRAL P/N	ROW	CONTACT CODE MOD. 1				MOD. 2			
		1	2	3	4	5	6	7	8
88952-X65 SEE NOTE 9 LEAD FREE OPTION	D	11	11	11	11	11	11	11	11
	C	11	11	11	11	11	11	11	11
	B	11	11	11	11	11	11	11	11
	A	11	11	11	11	11	11	11	11

METRAL P/N	ROW	CONTACT CODE MOD. 1				MOD. 2			
		1	2	3	4	5	6	7	8
88952-X70 SEE NOTE 9 LEAD FREE OPTION	D	9	9	9	9	9	9	9	9
	C	10	10	10	10	10	10	10	10
	B	11	11	11	11	11	11	11	11
	A	12	12	12	12	12	12	12	12

METRAL P/N	ROW	CONTACT CODE MOD. 1				MOD. 2			
		1	2	3	4	5	6	7	8
88952-X61 SEE NOTE 9 LEAD FREE OPTION	D	9	9	9	9	9	9	9	9
	C	9	9	9	9	9	9	9	9
	B	9	9	9	9	9	9	9	9
	A	9	9	9	9	9	9	9	9

METRAL P/N	ROW	CONTACT CODE MOD. 1				MOD. 2			
		1	2	3	4	5	6	7	8
88952-X66 SEE NOTE 9 LEAD FREE OPTION	D	10	10	10	10	10	10	10	10
	C	10	10	10	10	10	10	10	10
	B	10	10	10	10	10	10	10	10
	A	10	10	10	10	10	10	10	10

METRAL P/N	ROW	CONTACT CODE MOD. 1				MOD. 2			
		1	2	3	4	5	6	7	8
88952-X71 SEE NOTE 9 LEAD FREE OPTION	D	11	11	11	11	11	11	11	11
	C	9	9	9	9	9	9	9	9
	B	11	11	11	11	11	11	11	11
	A	11	11	11	11	11	11	11	11

METRAL P/N	ROW	CONTACT CODE MOD. 1				MOD. 2			
		1	2	3	4	5	6	7	8
88952-X62 SEE NOTE 9 LEAD FREE OPTION	D	9	9	9	9	9	9	9	9
	C	9	9	9	9	9	9	9	9
	B	9	9	9	9	9	9	9	9
	A	11	11	11	11	11	11	11	11

METRAL P/N	ROW	CONTACT CODE MOD. 1				MOD. 2			
		1	2	3	4	5	6	7	8
88952-X67 SEE NOTE 9 LEAD FREE OPTION	D	11	11	11	11	11	11	11	11
	C	10	10	10	10	10	10	10	10
	B	10	10	10	10	10	10	10	10
	A	9	9	9	9	9	9	9	9

METRAL P/N	ROW	CONTACT CODE MOD. 1				MOD. 2			
		1	2	3	4	5	6	7	8
88952-X72 SEE NOTE 9 LEAD FREE OPTION	D	12	12	12	12	12	12	12	12
	C	11	11	11	11	11	11	11	11
	B	10	10	10	10	10	10	10	10
	A	9	9	9	9	9	9	9	9

METRAL P/N	ROW	CONTACT CODE MOD. 1				MOD. 2			
		1	2	3	4	5	6	7	8
88952-X63 SEE NOTE 9 LEAD FREE OPTION	D	11	11	11	11	11	11	11	11
	C	10	10	10	10	10	10	10	10
	B	10	10	10	10	10	10	10	10
	A	11	11	11	11	11	11	11	11

METRAL P/N	ROW	CONTACT CODE MOD. 1				MOD. 2			
		1	2	3	4	5	6	7	8
88952-X68 SEE NOTE 9 LEAD FREE OPTION	D	11	11	11	11	11	11	11	11
	C	9	9	9	9	9	9	9	9
	B	9	9	9	9	9	9	9	9
	A	9	9	9	9	9	9	9	9

METRAL P/N	ROW	CONTACT CODE MOD. 1				MOD. 2			
		1	2	3	4	5	6	7	8
88952-X73 SEE NOTE 9 LEAD FREE OPTION	D	9	9	9	9	9	9	9	9
	C	9	9	9	9	9	9	9	9
	B	11	11	11	11	11	11	11	11
	A	9	9	9	9	9	9	9	9

mat'l code		--		tolerances unless otherwise specified		CUSTOMER		FCI	
lfr	ecm no.	dr	date	linear	0.X ±0.13	projection	COPY	www.fciconnect.com	
				angles	.XXX ±.051		title	METRAL SIGNAL HEADER	
				dr	T.BRUNGARD 11/19/99	MM	product family	METRAL	
				eng	M.STRAWSER 11/19/99	scale	size	dwg no	213
				ctr	M.STRAWSER 11/19/99	1:1	88952	sheet 5	
				appd	M.STRAWSER 02/29/00				
sheet index	revision								
	sheet								



This document is the property of and embodies CONFIDENTIAL and PROPRIETARY information of FCI. No part of the information shown on this document may be used in any way or disclosed to others without the written consent of FCI. Copyright FCI.

METRAL P/N	ROW	CONTACT CODE MOD. 1					MOD. 2						
		1	2	3	4	5	6	7	8	9	10	11	12
88952-X75 SEE NOTE 9 LEAD FREE OPTION	D	10	10	10	10	10	10	10	10	10	10	10	10
	C	9	9	9	9	9	9	9	9	9	9	9	9
	B	10	10	10	10	10	10	10	10	10	10	10	10
	A	9	9	9	9	9	9	9	9	9	9	9	9

METRAL P/N	ROW	CONTACT CODE MOD. 1					MOD. 2						
		1	2	3	4	5	6	7	8	9	10	11	12
88952-X80 SEE NOTE 9 LEAD FREE OPTION	D	3	3	3	3	3	3	3	3	3	3	3	3
	C	4	4	4	4	4	4	4	4	4	4	4	4
	B	13	13	13	13	13	13	13	13	13	13	13	13
	A	13	13	13	13	13	13	13	13	13	13	13	13

METRAL P/N	ROW	CONTACT CODE MOD. 1					MOD. 2						
		1	2	3	4	5	6	7	8	9	10	11	12
88952-X76 SEE NOTE 9 LEAD FREE OPTION	D	10	10	10	10	10	10	10	10	10	10	10	10
	C	11	11	11	11	11	11	11	11	11	11	11	11
	B	12	12	12	12	12	12	12	12	12	12	12	12
	A	11	11	11	11	11	11	11	11	11	11	11	11

METRAL P/N	ROW	CONTACT CODE MOD. 1					MOD. 2						
		1	2	3	4	5	6	7	8	9	10	11	12
88952-X81 SEE NOTE 9 LEAD FREE OPTION	D	3	3	3	3	3	3	3	3	3	3	3	3
	C	3	3	3	3	3	3	3	3	3	3	3	3
	B	13	13	13	13	13	13	13	13	13	13	13	13
	A	3	3	3	3	3	3	3	3	3	3	3	3

METRAL P/N	ROW	CONTACT CODE MOD. 1					MOD. 2						
		1	2	3	4	5	6	7	8	9	10	11	12
88952-X77 SEE NOTE 9 LEAD FREE OPTION	D	10	10	10	10	10	10	10	10	10	10	10	10
	C	10	10	10	10	10	10	10	10	10	10	10	10
	B	10	10	10	10	10	10	10	10	10	10	10	10
	A	11	11	11	11	11	11	11	11	11	11	11	11

METRAL P/N	ROW	CONTACT CODE MOD. 1					MOD. 2						
		1	2	3	4	5	6	7	8	9	10	11	12
88952-X82 SEE NOTE 9 LEAD FREE OPTION	D	13	13	13	13	13	13	13	13	13	13	13	13
	C	3	3	3	3	3	3	3	3	3	3	3	3
	B	13	13	13	13	13	13	13	13	13	13	13	13
	A	13	13	13	13	13	13	13	13	13	13	13	13

METRAL P/N	ROW	CONTACT CODE MOD. 1					MOD. 2						
		1	2	3	4	5	6	7	8	9	10	11	12
88952-X78 SEE NOTE 9 LEAD FREE OPTION	D	1	1	1	1	1	1	1	1	1	1	1	1
	C	1	1	1	1	1	1	1	1	1	1	1	1
	B	3	3	3	3	3	3	3	3	3	3	3	3
	A	4	4	4	4	4	4	4	4	4	4	4	4

METRAL P/N	ROW	CONTACT CODE MOD. 1					MOD. 2						
		1	2	3	4	5	6	7	8	9	10	11	12
88952-X83 SEE NOTE 9 LEAD FREE OPTION	D	10	10	10	10	10	10	10	10	10	10	10	10
	C	10	10	10	10	10	10	10	10	10	10	10	10
	B	11	11	11	11	11	11	11	11	11	11	11	11
	A	10	10	10	10	10	10	10	10	10	10	10	10

METRAL P/N	ROW	CONTACT CODE MOD. 1					MOD. 2						
		1	2	3	4	5	6	7	8	9	10	11	12
88952-X79 SEE NOTE 9 LEAD FREE OPTION	D	2	2	2	2	2	2	2	2	2	2	2	2
	C	2	2	2	2	2	2	2	2	2	2	2	2
	B	4	4	4	4	4	4	4	4	4	4	4	4
	A	2	2	2	2	2	2	2	2	2	2	2	2

METRAL P/N	ROW	CONTACT CODE MOD. 1					MOD. 2						
		1	2	3	4	5	6	7	8	9	10	11	12
88952-X84 SEE NOTE 9 LEAD FREE OPTION	D	6	6	6	6	6	6	6	6	6	6	6	6
	C	6	6	6	6	6	6	6	6	6	6	6	6
	B	8	8	8	8	8	8	8	8	8	8	8	8
	A	6	6	6	6	6	6	6	6	6	6	6	6

NOTES:

- FOR DIM A AND B SEE SHEET 2 AND UP.
- BODY MATERIAL: LIQUID CRYSTAL
POLYMER 30 % GLASS.
FLAME RETARDANT ACC. UL 94-V0.
- PIN MATERIAL:
PHOSPHOR BRONZE.
- PLATING ON SOLDER TO BOARD:
88952-XXX IS SnPb
88952-XYLF IS Sn (LEAD FREE)
PLATING ON CONTACT AREA CONFORMS TO PERFORMANCE LEVEL SHOWN IN TABLE.
- PRODUCT MARKING:
PART NUMBER DESIGNATION & BATCH I.D.
- ALL PRODUCTS WITH PART NUMBERS SHOWN IN SUBSEQUENT TABLES WILL BE PACKAGED IN TUBES. IF TRAY PACKAGING IS REQUIRED, A SUFFIX "P" WILL BE ADDED TO THE END OF THE PART NUMBER. EXAMPLE: XXXXX-XXXXP OR XXXXX-XXXXPLF
- PRODUCT SPECIFICATION GS-12-180
APPLICATION SPECIFICATION BUS-20-074
- THE PRODUCTS WHERE THE PART NUMBER ENDS IN LF MEET THE EUROPEAN UNION DIRECTIVES AND OTHER COUNTRY REGULATIONS AS DESCRIBED IN GS-22-008.
- FOR LEAD FREE PART NUMBERS, ADD AN "LF" SUFFIX. EXAMPLE: 88952-X01LF
- ALL PRODUCTS EXCEPT THOSE WITH PART NUMBERS CONTAINING (DRAWING NO.)-N1--- OR (DRAWING NO.)-N5--- WILL WITHSTAND EXPOSURE TO 260°C FOR 60 SECONDS IN A CONVECTION, INFRA-RED OR VAPOR PHASE REFLOW OVEN. PART NUMBERS (DRAWING NO.)-N1--- AND (DRAWINGS NO.)-N5--- WILL NOT WITHSTAND REFLOW AND ALL CONTACT SURFACE OF THE CONTACTS SHALL BE EXPOSED TO A MAXIMUM 140°C FOR NO LONGER THAN 15 SECONDS IN A WAVE SOLDER APPLICATION.

mat'l code		--		tolerances unless otherwise specified		CUSTOMER		FCI		www.fciconnect.com	
ltr	ecn no.	dr	date	linear	0.XX ±0.13	projection	title	METRAL SIGNAL HEADER			
				angles	.XXX ±.051	MM	2 MOD. 4 ROW STB		code		
				dr	T.BRUNGARD 11/19/99	scale	product family	METRAL		213	
				eng	M.STRAWNSER 11/19/99	1:1	size	dwg no		sheet	
				chr	M.STRAWNSER 11/19/99		88952		6		
				appd	M.STRAWNSER 02/29/00						
sheet index	revision	sheet									

REV E - 2004-04-18

Pro/E

PDM: Rev:U

STATUS:Released

Printed: Nov 30, 2009