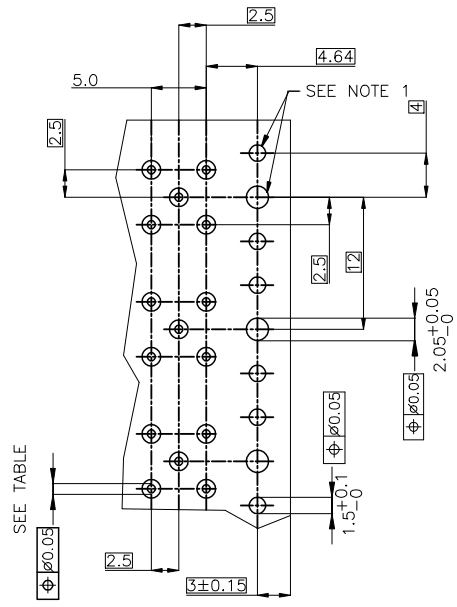
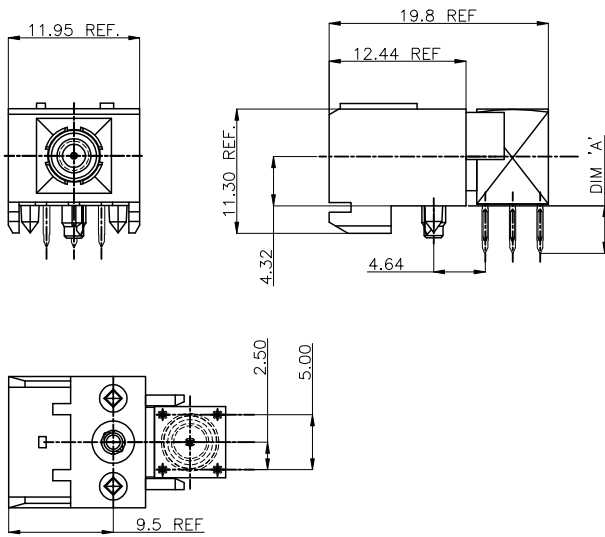


PRODUCT NO	PCB THICKNES	DIM A	NOTES
63721-101	1.6 & 2.4	4.19	4
63721-102	1.6 & 2.4	4.19	2 & 4



RECOMMENDED HOLE PATTERN, COMPONENT SIDE.

- NOTES:
- INDICATED HOLES ARE TO BE UNPLATED
  - COMPONENTS SUPPLIED UNASSEMBLED
  - SEE PRINT 10026911 FOR COAX. PLATING SPEC.
  - ADD "LF" SUFFIX AT THE END OF PART NUMBER FOR LEAD FREE OPTION.
  - THIS PRODUCT MEETS EUROPEAN UNION DIRECTIVES AND OTHER COUNTRY REGULATION AS DESCRIBED IN GS-22-008.
  - THE HOUSING WILL WITHSTAND EXPOSURE TO 260°C PEAK TEMPERATURE FOR 15 SECONDS IN A WAVE SOLDER APPLICATION WITH A 1.5mm MINIMUM THICK CIRCUIT BOARD OR FOR 20 SECONDS IN A CONVECTION, INFRA-RED OR VAPOR PHASE REFLOW OVEN. SEE APPLICATION NOTES/PROCEDURES IF THEY ARE AVAILABLE.

PRESS FIT HOLES	
HOLE DIAMETER AFTER PLATING	0.65 - 0.80
DRILLED HOLE	0.81 - 0.86 (0.85 DRILL)
COPPER PLATING	0.025 MIN
TIN PLATING	0.005 - 0.015

mat'l. code		surface		tolerance		projection		product family	
		ISO 1902		ISO 406		MM		METRAL (tm)	
tolerances unless otherwise specified									
ltr	ecr no	dr	date	angles	linear	scale		title	
A	V81487	GCR	9/03/98		.X±0.3	1:1		RIGHT ANGLE COAX ASSEMBLY	
B	V94348	HTB	11/16/99		.XX±0.13			dwg no 63721 sheet 1 of 1 size A3	
C	M06-0288	MNR	7/27/06	α±z	.XXX±0.050			type Product Customer Drawing	
D	M07-0101	MHT	2/09/07	dr				FCJ	
E	M09-0054	MHT	3/26/09	eng				C. PENDLETON 9/03/98	
				chr				C. PENDLETON 9/03/98	
				appd				C. PENDLETON 9/03/98	
sheet index	revision sheet	E	1						