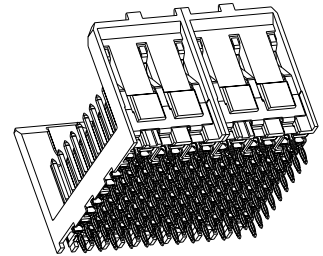
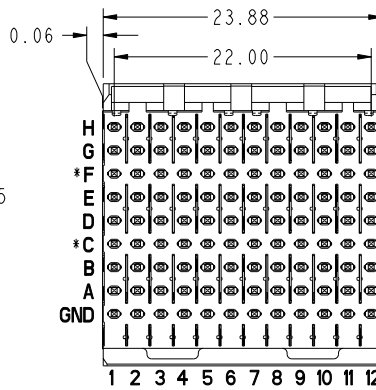
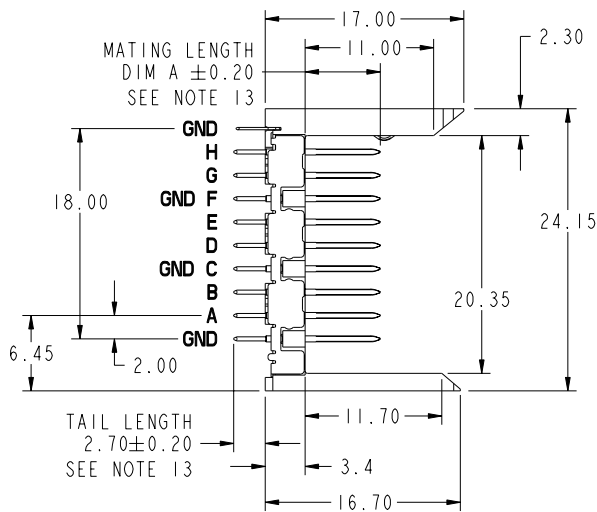
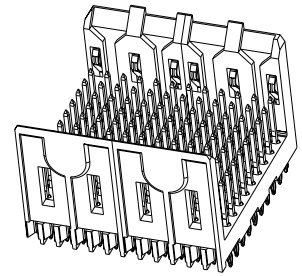
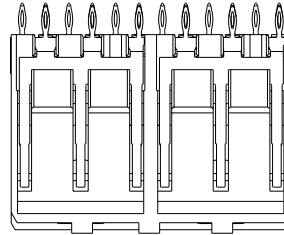


PRODUCT NUMBER	PLATING PERFORMANCE LEVEL	PRESS FIT TAIL PLATING
55004-102ZZZ	TELCORDIA CO	STANDARD
55004-102ZZZLF		LEAD FREE
55004-502ZZZ	TELCORDIA UE	STANDARD
55004-502ZZZLF		LEAD FREE



***ROW C AND F INFORMATION**
 ODD NUMBER COLUMNS WITHIN ROW C & F ARE COMMONED TO GROUND INTERNALLY WITHIN THE HOUSING. THE EVEN NUMBER COLUMNS WITHIN ROW C & F ARE NOT. FOR MAXIMUM PERFORMANCE IT IS RECOMMENDED THESE EVEN COLUMNS BE GROUND COMMONED WITHIN PCB. SEE NOTE 12

mat'l code				tolerances unless otherwise specified		CUSTOMER		FCj	
SEE NOTE 3				0.X ± 0.3		COPY		www.fciconnect.com	
ltr	ecn no.	dr	date	linear	0.XX ± 0.13	projection		title	
H	V07-0686	HTB	2007-11-19		.XXX ± .051	MM		VERTICAL SIGNAL HDR 8 ROW	
J	V08-0039	HTB	2008-01-25	angles	0° ± 2°	scale		P.F. 96 POS. SPECIAL LOAD STD.	
D	V05-0771	VS	2005-09-06	dr	E. KROPER. 2001-10-24	2:1		product family	
E	V06-0492	DCH	2006-05-23	engr	J. VOLSTORF 2001-10-24	A		METRAL 4000	
F	V06-0868	DCH	2006-08-29	chr	J. VOLSTORF 2001-10-24			code	
G	V07-0176	DCH	2007-04-17	oppd	J. VOLSTORF 2001-10-24			213	
sheet	revision	J	J	J	J			sheet	
index	sheet	1	2	3	4			1 of 5	



This document is the property of and embodies CONFIDENTIAL and PROPRIETARY information of FCj. No part of the information shown on this document may be used in any way or disclosed to others without the written consent of FCj. Copyright FCj.

REV E - 2008-04-18

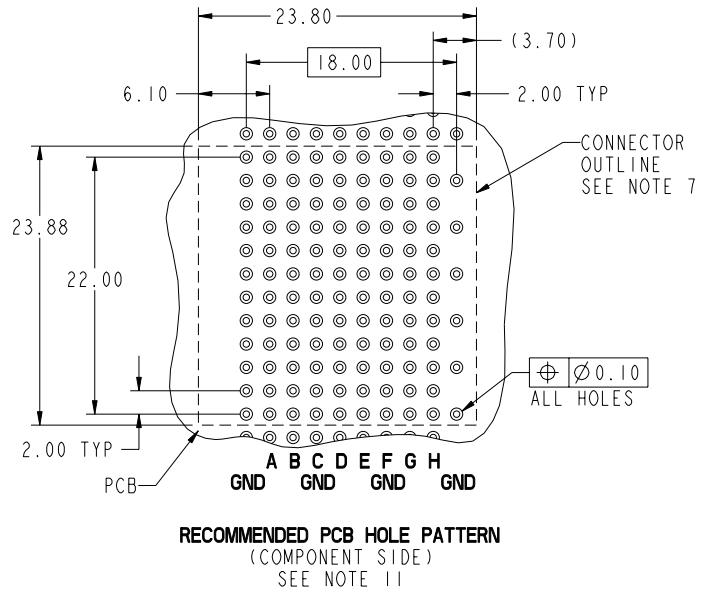
PDM: Rev:J STATUS: Released Printed: May 12, 2011



This document is the property of and embodies CONFIDENTIAL and PROPRIETARY information of FCI. No part of the information shown on this document may be used in any way or disclosed to others without the written consent of FCI. Copyright FCI.

PRODUCT NUMBER
SEE SHEET 1

PRESS-FIT HOLES	OPTION 1	OPTION 2
HOLE DIAMETER AFTER PLATING	0.45-0.55	0.48-0.57
DRILLED HOLE	0.60±0.02	0.60±0.02
COPPER PLATING	0.025 MIN-0.050 MAX.	0.025 MIN-0.050 MAX.
SnPb PLATING	0.005-0.015	---



mat'l code: SEE NOTE 3				tolerances unless otherwise specified		CUSTOMER		www.fciconnect.com	
lfr	ecm no.	dr	date	linear	0.X ±0.3	COPY		title	
J				angles	0.XX ±0.13	projection		VERTICAL SIGNAL HDR 8 ROW	
					.XXX ±.051			P.F. 96 POS. SPECIAL LOAD STD.	
				dr	0° ±2°			product family	
				enr		MM		METRAL 4000	
				chr	E. KROPER. 2001-10-24	scale		size	
				oppd	J. VOLSTORF 2001-10-24	2:1		dwg no	
					J. VOLSTORF 2001-10-24			55004	
sheet index	revision sheet							code	
								213	
								sheet	
								2	

cage code 22526

PDM: Rev:J STATUS: Released Printed: May 12, 2011

1 | 2

3 |

4

PRODUCT NUMBER
SEE SHEET 1

NOTES:

1. SEE APPLICATION SPECIFICATION GS-20-014 FOR INFORMATION ON AVAILABLE TOOLING, CIRCUIT BOARD DESIGN CONSIDERATIONS, REPAIR PROCEDURE AND PRODUCT OFFERINGS. SEE PRODUCT SPECIFICATION GS-12-185.
2. UNLESS OTHERWISE SPECIFIED, ALL DIMENSIONS AND TOLERANCES ARE IN ACCORDANCE WITH ASME Y14.5, 1994
3. HOUSING MATERIAL: LIQUID CRYSTAL POLYMER, 30% GLASS FILLED, FLAME RETARDANT PER UL 94-V0. PIN MATERIAL: PHOSPHOR BRONZE GROUND SPRING MATERIAL: PHOSPHOR BRONZE STRIPLINE SHIELD MATERIAL: PHOSPHOR BRONZE
4. PLATING INFORMATION: PLATING ON CONTACT AREA MEETS THE PERFORMANCE LEVELS SHOWN IN TABLE ON SHEET 1. PLATING ON "LF" TAILS IS Sn. PLATING ON ALL OTHER TAILS IS SnPb.
5. DIMENSIONAL RESTRICTIONS OF PINS IN HEADERS. FOR USE WITH METRAL 4000 RECEPTACLES.
DIM A : 5.00mm MIN, 6.50mm MAX FOR ROWS A,B,D,E,G,H
DIM A : 5.00mm MIN, 8.00mm MAX FOR ROWS C-F
DIM A : 5.00mm MIN, 5.75mm MAX FOR ROWS GND FOR USE WITH METRAL 1000 RECEPTACLES
DIM A : 5.00mm MIN, 8.00mm MAX FOR ROWS A,B,C,D,E,F,G,H
DIM A : 5.00mm MIN, 5.75mm MAX FOR ROW GND
6. THE MIN PCB THICKNESS FOR FRONT PLUG-UP APPLICATIONS IS 1.6mm.
7. THE 'CONNECTOR OUTLINE' IS THE MIN OUTLINE REQUIRED. TO DETERMINE THE OUTLINE NECESSARY TO PERMIT THE VARIOUS TYPES OF REPAIR OPERATIONS, SEE APPLICATION SPECIFICATION GS-20-010.
8. CURRENT RATING : 1 AMP PER PIN
9. TEMPERATURE RANGE : -55°C TO +105°C

10. P/N 55004-X02ZZZLF



11. AVOID TRACES ON TOP OF BOARD DUE TO EXPOSED GROUND SHIELDS.
12. FOR FRONT PLUG-UP APPLICATIONS, THE EVEN NUMBERED PINS IN ROW "C" AND "F" CAN BE USED FOR POWER AS WELL AS FOR GROUND. IF THE SURROUNDING PINS ARE NOT USED FOR POWER, THEN EACH PIN CAN CARRY 3 AMPS. IF THE SURROUNDING PINS ARE USED FOR POWER, THEN EACH PIN CAN CARRY 1 AMP. WHEN THE SURROUNDING PINS ARE USED ONLY FOR LOW SPEED SIGNALS, THEN THE EVEN NUMBERED "C" AND "F" ROW PINS CAN ALSO BE USED FOR LOW SPEED SIGNALS.
13. AFTER INSERTION INTO CIRCUIT BOARD WITH QUALIFIED TOOL.
14. THE PRODUCTS WHERE THE PART NUMBER ENDS IN 'LF' MEET THE EUROPEAN UNION DIRECTIVES AND OTHER COUNTRY AS DESCRIBED IN GS-22-008. ALL PRODUCTS WILL WITHSTAND EXPOSURE TO 260°C FOR 60 SECONDS IN A CONVECTION, INFRA-RED OR VAPOR PHASE REFLOW OVEN.
15. FOR LEAD FREE PART NUMBERS, ADD AN 'LF' SUFFIX. EXAMPLE: 55004-X02002LF.
16. EQUIVALENT PRECIOUS METAL PLATING MAY BE SUBSTITUTED.

mat'l code: SEE NOTE 3				tolerances unless otherwise specified		CUSTOMER		FCJ www.fcjconnect.com	
ltr	ecm no.	dr	date	linear	0.X ± 0.3	COPY		title	
J					0.XX ± 0.13	projection		VERTICAL SIGNAL HDR 8 ROW	
				angles	.XXX ± .051	MM		P.F. 96 POS. SPECIAL LOAD STD.	
				dr	0° ± 2°	scale		product family	
				engr		2:1		METRAL 4000	
				chr	E. KROPER. 2001-10-24	A		code	
				oppd	J. VOLSTORF 2001-10-24			213	
					J. VOLSTORF 2001-10-24			sheet	
sheet index	revision sheet							3	
								4	

This document is the property of and embodies CONFIDENTIAL and PROPRIETARY information of FCJ. No part of the information shown on this document may be used in any way or disclosed to others without the written consent of FCJ. Copyright FCJ.

REV E - 2006-04-18

1 | 2

Pro/E

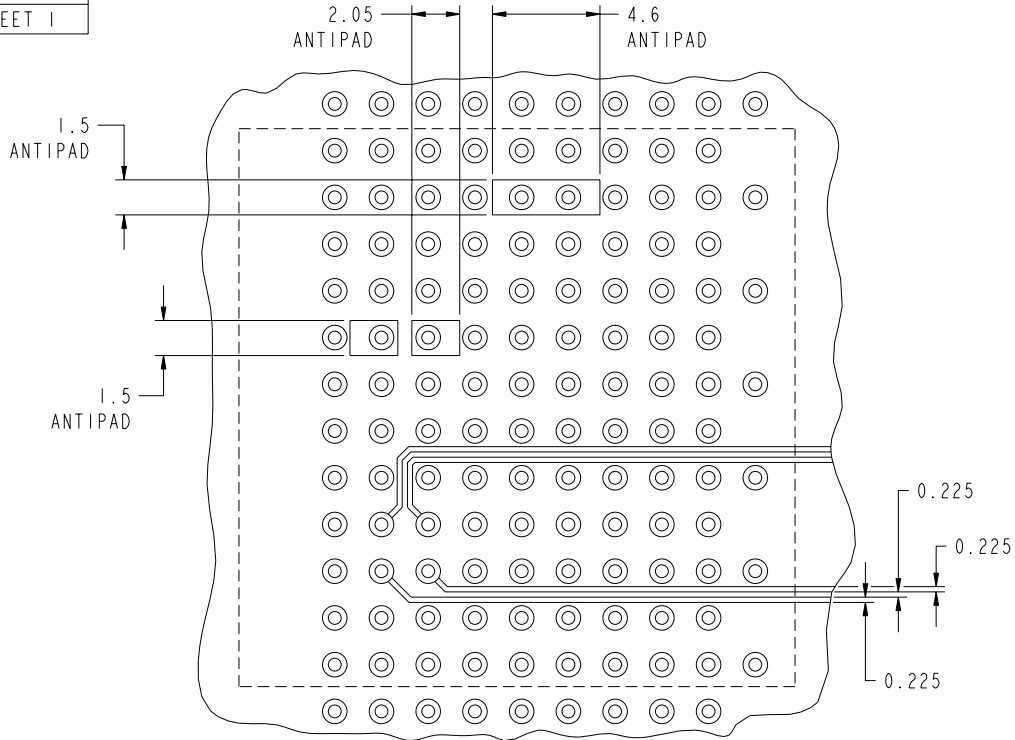
3 |

cage code 22526

4

PDM: Rev:J STATUS: Released Printed: May 12, 2011

PRODUCT NUMBER
SEE SHEET 1



RECOMMENDED TRACK AND ANTIPAD DIMENSIONS
SCALE 4:1

mat'l code: SEE NOTE 3				tolerances unless otherwise specified		CUSTOMER		FCJ www.fcjconnect.com	
lfr	ecm no.	dr	date	linear	0.X ±0.3	projection	COPY		
J					0.XX ±0.13	MM	title VERTICAL SIGNAL HDR 8 ROW		
				angles	.XXX ±.051	scale	P.F. 96 POS. SPECIAL LOAD STD.		
				dr	0° ±2°	2:1	product family METRAL 4000		code 213
				engr	E. KROPER. 2001-10-24		size dwg no 55004		sheet 4
				chr	J. VOLSTORF 2001-10-24				
				oppd	J. VOLSTORF 2001-10-24				
sheet index	revision sheet						cage code 22526		4



This document is the property of and embodies CONFIDENTIAL and PROPRIETARY information of FCJ. No part of the information shown on this document may be used in any way or disclosed to others without the written consent of FCJ. Copyright FCJ.

REV E - 2006-04-18

PDM: Rev:J STATUS: Released Printed: May 12, 2011

1 | 2

3 |

4

PRODUCT #	SPECIAL LOAD PATTERN	
	ROW	PIN CODES
55004-X02002 SEE NOTE 15 LEAD FREE OPTION	H	03
	G	
	F	
	E	
	D	
	C	
	B	
	A	
GND	02	

DIM A	PIN CODES
5.00	01
5.75	02
6.50	03
7.25	04
8.00	*19

* CURRENTLY NOT AVAILABLE



This document is the property of and embodies CONFIDENTIAL and PROPRIETARY information of FCJ. No part of the information shown on this document may be used in any way or disclosed to others without the written consent of FCJ. Copyright FCJ.

mat'l code: SEE NOTE 3				tolerances unless otherwise specified		CUSTOMER		FCJ www.fcjconnect.com	
lfr	ecm no.	dr	date	linear	0.X ±0.3	projection	COPY		
J					0.XX ±0.13		title VERTICAL SIGNAL HDR 8 ROW P.F. 96 POS. SPECIAL LOAD STD.		
				angles	.XXX ±.051		product family		code
				dr	0° ±2°	scale	size		213
				eng	E. KROPER. 2001-10-24	1:1	dwg no		sheet
				chr	J. VOLSTORF 2001-10-24		55004		5
				oppd	J. VOLSTORF 2001-10-24				
sheet index	revision sheet								

code code 22526

Pro/E

3 |

4

PDM: Rev:J STATUS: Released Printed: May 12, 2011

REV E - 2006-04-18