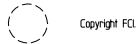


CONFIDENTIAL

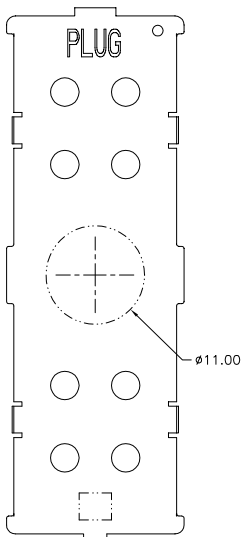
mat'l code		SEE NOTE 1		surface	ASME Y14.5	tolerance	ASME Y14.5	projection	product family	MEG-Array
ltr	ec'n no	dr	date	tolerances unless otherwise specified				MM	title	0mm PLUG ASSY
A	v03-1102	LP	10/20/03	angles		X *3		scale	12 X 44 = 528 POS.	sheet 1 of 3
B	v04-0940	VS	10/13/04			XX *10		1:1		size A4
C	v06-0560	LP	2006/07/10			XXX *050				
sheet index		revision	C	C	C				dwg no	10022671
		sheet	1	2	3				type	CUSTOMER Drawing



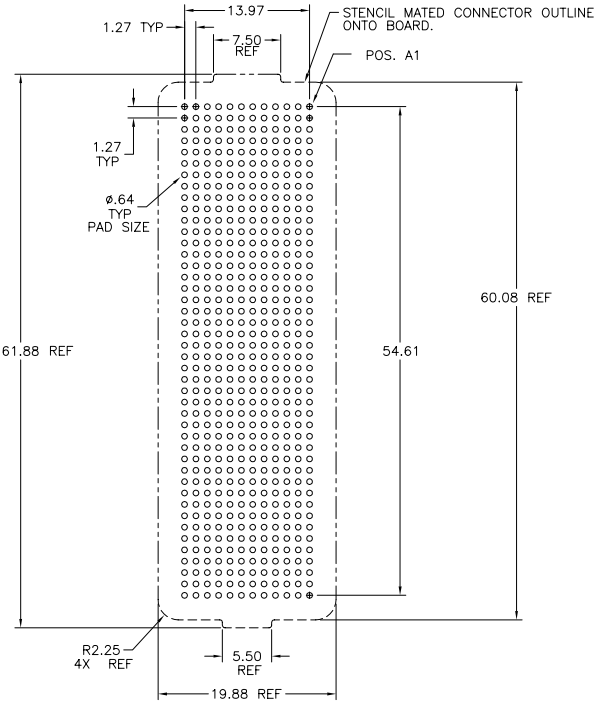
1 | 2

3 |

4



VACUUM AREA
FOR OPTIONAL
PICK UP CAP



BOARD PATTERN
SCALE 2/1

mat'l code	SEE NOTE 1	surface	ASME Y14.5	tolerance	ASME Y14.5	projection	product family
tr	ec'n no	dr	date	tolerances unless otherwise specified		MM	MEG-Array
c				angles	X *3 XX *10 XXX *050	scale 1:1	title
				or ±2"			0mm PLUG. ASSY 12 X 44= 528 POS.
		dr	D.INGRAM	02/05/03			dwg no
		engr	D.WHITING	02/05/03			sheet 2 of 3
		chr	D.WHITING	02/05/03			size
		appd	D.WHITING	02/05/03			A4
sheet index	revision sheet						type
							CUSTOMER Drawing

form A4mmX1c

1

2

3

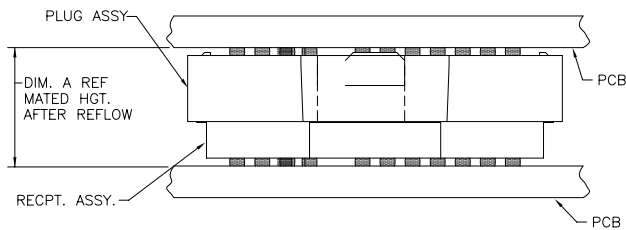
4

PDM: Rev:C STATUS:Released Printed: Feb 12, 2011

PRODUCT NUMBER	PICK-UP CAP	CONTACT PLATING	SOLDER BALL
10022671-002	YES	15u" (.38um) Au OVER Ni	SnPb
10022671-002LF			SnAgCu LEAD FREE (7)(8)
10022671-102	YES	30u" (.76um) Au OVER Ni	SnPb
10022671-102LF			SnAgCu LEAD FREE (7)(8)
10022671-202	YES	SEE NOTE 5	SnPb
10022671-202LF			SnAgCu LEAD FREE (7)(8)

NOTES:

1. **MAT'L:**
HOUSING: LCP
CONTACT: COPPER ALLOY
PLATING:
CONTACT: (SEE TABLE ON SHEET3)
SOLDER BALL: (SEE TABLE ON SHEET3)
EUTECTIC SnPb OR LEAD FREE
95.5Sn/4Ag/0.5Cu
2. SOLDER BALLS WILL NOT BE PERFECT SPHERICAL SHAPE DUE TO REFLOW ATTACHMENT.
3. MATED HEIGHT EFFECTED BY CUSTOMER'S PCB PAD SIZE, PLATING, SOLDER REFLOW PROFILE, & SOLDER PASTE.
4. PLATING FOR INDICATED -2XX SERIES PART NOS. MEETS THE REQUIREMENTS OF NORTEL NPS25298-2 (CENTRAL OFFICE ENVIRONMENT, 25 YEAR LIFE EXPECTANCY).
5. PLATING FOR INDICATED -2XX SERIES PART NOS. IS Au OVER Ni WITH SPECIAL CONTACT GEOMETRY TO MEET REQUIREMENTS OF TELCORDIA GR-1217-CORE: CENTRAL OFFICE ENVIRONMENT.
6. **KNIT LINE:** SLIGHT VISIBLE MARKS (USUALLY A LINE) INDICATING THE DIRECTION AND MEETING POINT OF PLASTIC RESIN FLOW FRONTS TRAVELING AROUND ANY OBSTRUCTIONS TO THE RESIN FLOW VIA THE REQUIRED MOLD TOOLING.
7. FOR PROPER APPLICATION FOLLOW FCI APPLICATION SPECIFICATION GS-20-033 LEAD FREE SOLDER BALLS WILL NOT SOLDER PROPERLY IN A LEADED SOLDER PROCESS DUE TO A HIGHER REFLOW TEMPERATURE. LEAD FREE PRODUCT IS THEREFORE NOT BACKWARDS COMPATIBLE WITH LEADED OR SOME SOLDERING APPLICATIONS. REFERENCE FCI APPLICATION SPECIFICATION
8. THIS PRODUCT MEETS EUROPEAN UNION DIRECTIVES AND OTHER COUNTRY REGULATIONS AS DESCRIBED IN GS-22-008 PRODUCT MEETING THIS DIRECTIVE IS IDENTIFIED IN THE LOT CODE NUMBER MARKED ON EACH PART BY HAVING AN "X" IN THE SEVENTH CHARACTER POSITION



MATED HEIGHT TABLE		
DIM. A	RECPT. ASSY. P/N	PLUG ASSY. P/N
6.0	10026846-X01	10022671-X02

MATED HEIGHT AFTER REFLOW IS BASED ON Ø .64mm PAD (METAL-DEFINED) AND .13mm SOLDER PASTE STENCIL THICKNESS. SEE NOTE 3.

END VIEW - MATED CONNECTORS SCALE NONE

mat'l code	SEE NOTE 1	surface	ASME Y14.5	tolerance	ASME Y14.5	projection	product family	MEG-Array
ltr	ecrn no	dr	date	tolerances unless otherwise specified		MM	title	0mm PLUG ASSY
c				angles	X *3	MM		12 X 44= 528 POS.
				0° ±2'	XX *10	scale	1:1	
		dr	D.INGRAM	02/05/03			dwg no	10022671
		enr	D.WHITING	02/05/03			sheet	3 of 3
		chr	D.WHITING	02/05/03			size	A4
		appd	D.WHITING	02/05/03			type	CUSTOMER Drawing
sheet index	revision sheet							