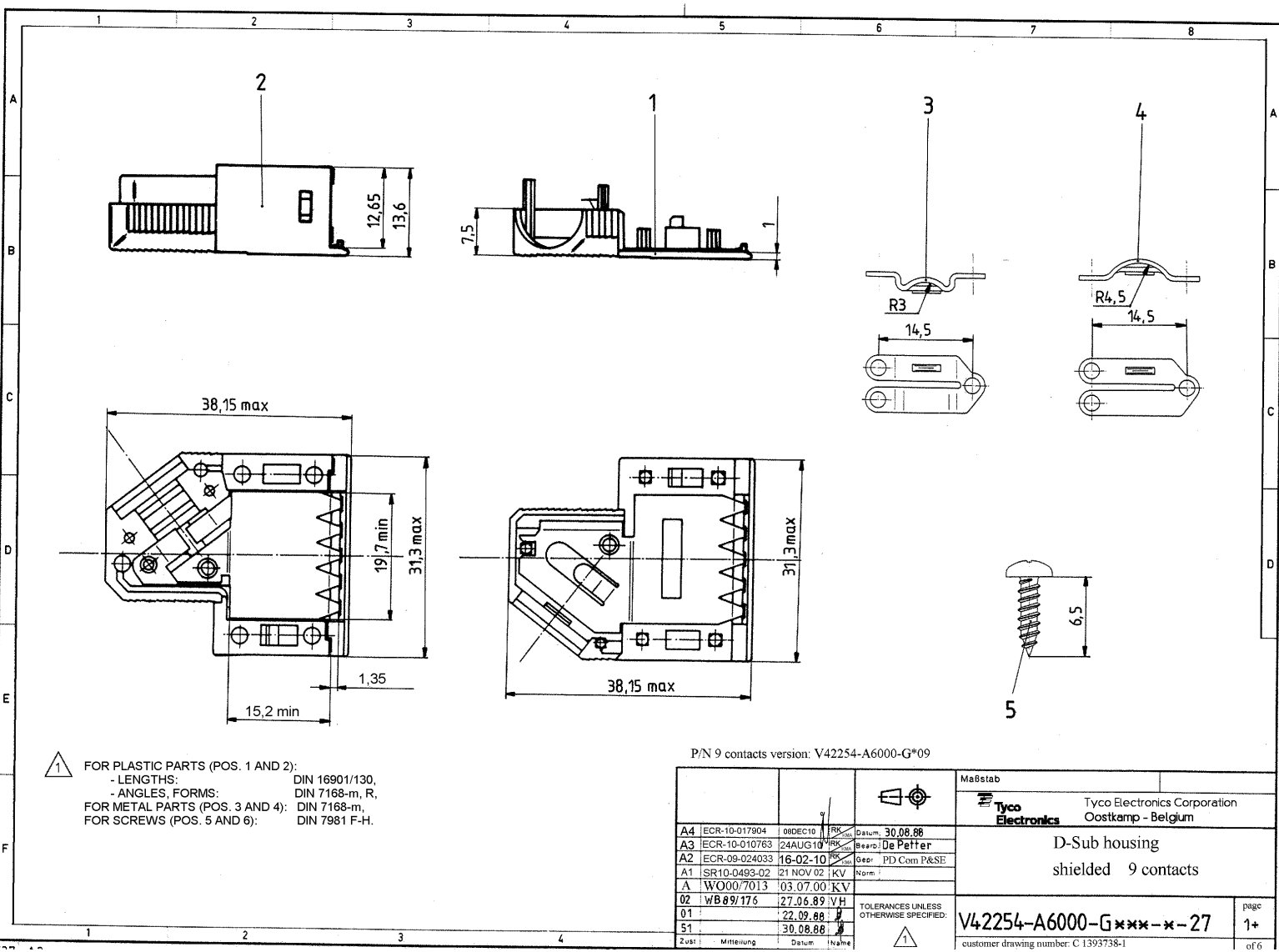


Sin muestra expresa autorización, queda terminantemente prohibido:  
 reproducir o copiar, total o parcialmente, el contenido de este documento, así como su  
 uso o comunicación de los contenidos thereof, en cualquier forma o por cualquier medio,  
 electrónico o mecánico, incluyendo fotocopias, grabaciones, sistemas de información,  
 microfilm o cualquier otro sistema de almacenamiento de datos, sin el consentimiento  
 expreso de la empresa fabricante o del titular de los derechos de propiedad intelectual.  
 Sin muestra expresa autorización, queda terminantemente prohibido:  
 reproduire ou copier, totalement ou partiellement, le contenu de ce document, ainsi que  
 son utilisation ou sa communication, sous quelque forme que ce soit, par quelque moyen  
 que ce soit, électronique ou mécanique, y compris les photocopies, les enregistrements,  
 les systèmes d'information, le microfilm ou tout autre système de stockage de données,  
 sans le consentement exprès de l'entreprise fabricante ou du titulaire des droits de  
 propriété intellectuelle.

Weetgeef de naam, vestigingsplaats, adres, telefoon-  
 nummer en de naam van de persoon die de afname  
 van de tekening heeft gedaan. Het is niet toegestaan  
 de tekening of de inhoud daarvan te kopiëren of te verspreiden.  
 De afnemer aanvaardt de aansprakelijkheid voor het gebruik van de  
 tekening.

Copying of this document, and giving it to others and the  
 use or communication of the contents thereof, are forbidden  
 without the express authorization of the manufacturer or  
 the holder of the intellectual property rights. The user of the  
 drawing assumes the responsibility for its use.



1 FOR PLASTIC PARTS (POS. 1 AND 2):  
 - LENGTHS: DIN 16901/130,  
 - ANGLES, FORMS: DIN 7168-m, R,  
 FOR METAL PARTS (POS. 3 AND 4): DIN 7168-m,  
 FOR SCREWS (POS. 5 AND 6): DIN 7981 F-H.

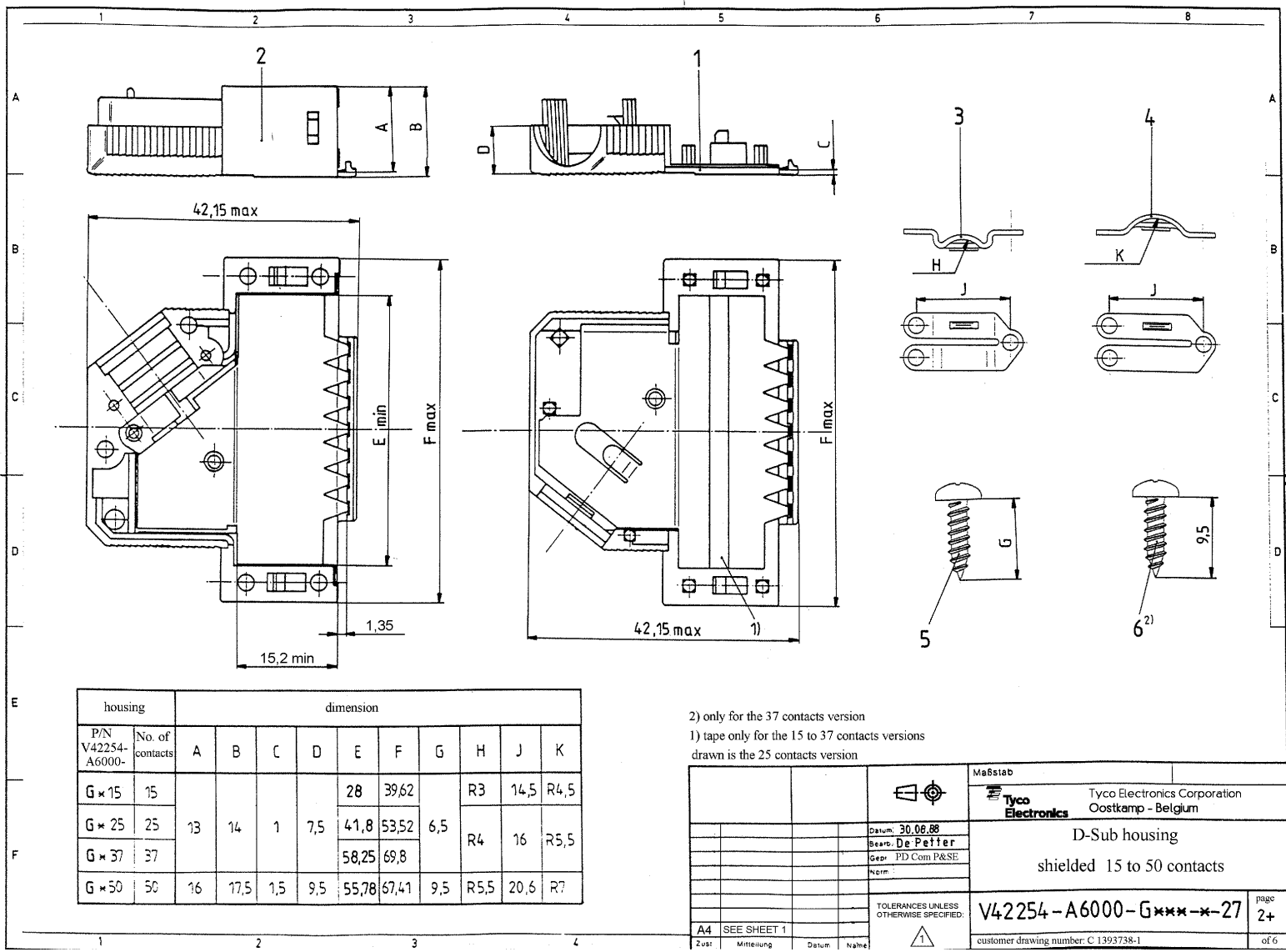
P/N 9 contacts version: V42254-A6000-G\*09

A4   ECR-10-017904   09DEC10   PK   Datum: 30.08.88		Tyco Electronics Corporation Oostkamp - Belgium	D-Sub housing shielded 9 contacts	page <b>1+</b> of 6
A3   ECR-10-010763   24AUG10   PK   Beoord: De Peffer				
A2   ECR-09-024033   16-02-10   PK   Geop: PD Com P&SE				
A1   SR10-0493-02   21 NOV 02   KV   Norm: i				
A   WO00/7013   03.07.00   KV				
02   WB 89/175   27.06.89   VH				
01     22.09.88				
51     30.08.88				
Zust: Mitteilung Datum: Name:		TOLERANCES UNLESS OTHERWISE SPECIFIED: 		
		<b>V42254-A6000-G***-x-27</b>		
		customer drawing number: C.1393738-1		

Van afbeelding af te leiden, dat de afmetingen in millimeters zijn. Indien de afmetingen in andere eenheden zijn, worden deze in de afmeting aangegeven. Het is niet toegestaan de afmetingen te wijzigen. Het is niet toegestaan de afmetingen te wijzigen. Het is niet toegestaan de afmetingen te wijzigen. Het is niet toegestaan de afmetingen te wijzigen.

Wanneer de afmetingen in andere eenheden zijn, worden deze in de afmeting aangegeven. Het is niet toegestaan de afmetingen te wijzigen. Het is niet toegestaan de afmetingen te wijzigen. Het is niet toegestaan de afmetingen te wijzigen. Het is niet toegestaan de afmetingen te wijzigen.

Wanneer de afmetingen in andere eenheden zijn, worden deze in de afmeting aangegeven. Het is niet toegestaan de afmetingen te wijzigen. Het is niet toegestaan de afmetingen te wijzigen. Het is niet toegestaan de afmetingen te wijzigen. Het is niet toegestaan de afmetingen te wijzigen.



housing		dimension									
P/N	No. of contacts	A	B	C	D	E	F	G	H	J	K
V42254-A6000-											
G × 15	15					28	39,62		R3	14,5	R4,5
G × 25	25	13	14	1	7,5	41,8	53,52	6,5	R4	16	R5,5
G × 37	37					58,25	69,8				
G × 50	50	16	17,5	1,5	9,5	55,78	67,41	9,5	R5,5	20,6	R7

2) only for the 37 contacts version  
 1) tape only for the 15 to 37 contacts versions  
 drawn is the 25 contacts version

Maßstab		Tyco Electronics Corporation Oostkamp - Belgium	
Datum: 30.08.88		D-Sub housing	
Bezet: De Peltier		shielded 15 to 50 contacts	
Geop: PID Com P&SE		V42254-A6000-G***-27	
Norm:		page 2+	
TOLERANCES UNLESS OTHERWISE SPECIFIED:		customer drawing number: C 1393738-1	
A4	SEE SHEET 1	of 6	
Zust:	Mitteilung	Datum	Nahme

V 4 2 2 5 4 - A 6 0 0 \* - G \* \* \*

Housing type  
**G** plastic housing, shielded

Marking and colour of the housing

1	TE-marking, grey
2	without marking, grey
3	TE-marking, black
4	without marking, black

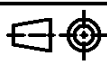
wire diameter	No. of contacts - housing size					
	0	1	2	3	4	
4-8					09	9 contact - housing size 1
5-10					15	15 contacts - housing size 2
5-11					25	25 contacts - housing size 3
6-11					37	37 contacts - housing size 4
9-14,5					50	50 contacts - housing size 5
Packaging	1) per set, in blister - 9 and 15 contacts : 25 - 25, 37 and 50 contacts : 15 2) loose pieces, in cardboard : 200					

THIS INFORMATION IS CONFIDENTIAL AND PROPRIETARY TO TYCO ELECTRONICS CORPORATION AND ITS WORLDWIDE SUBSIDIARIES AND AFFILIATES. IT MAY NOT BE DISCLOSED TO ANYONE, OTHER THAN TYCO ELECTRONICS PERSONNEL, WITHOUT WRITTEN AUTHORIZATION FROM TYCO ELECTRONICS CORPORATION, HARRISBURG, PENNSYLVANIA USA.

PROPRIETARY:



Tyco Electronics Corporation  
 Oostkamp - Belgium



LOC GW DIMENSIONS IN MM

SCALE WEIGHT

MATERIAL

DATE	30.08.88
NAME	De Petter
DEP.	PD Com P&SE
EC	
TOLERANCE UNLESS SPECIFIED OTHERWISE	
REV.	CHANGE ORDER
DATE	APP.

NAME  
**D-Sub Housing**  
 shielded

DWG NO.  
**V42254-A6000-G\*\*\*-\*-27**

SHT. 3+

customer drawing number: C 1393738-1 OF 6

Active part numbers. Contact  
Tyco Electronics for  
other configuration availability

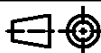
Old Part Number	TE Part Number	
V42254-A6000-G109	1393738-1	
V42254-A6000-G115	1393738-2	
V42254-A6000-G125	1393738-3	
V42254-A6000-G137	1393738-4	
V42254-A6000-G150	1393738-5	
V42254-A6000-G209	1393738-6	
V42254-A6000-G309	1393738-7	
V42254-A6000-G315	1393738-8	
V42254-A6000-G325	1393738-9	SUPERSEDED BY 1393738-1
V42254-A6001-G109	4-1393738-2	OBSOLETE
V42254-A6001-G125	4-1393738-4	SUPERSEDED BY 6-1393738-1
V42254-A6001-G309	4-1393738-5	SUPERSEDED BY 1-1393739-9
V42254-A6001-G315	4-1393738-6	SUPERSEDED BY 6-1393738-7
V42254-A6002-G109	5-1393738-0	OBSOLETE
V42254-A6002-G125	5-1393738-2	SUPERSEDED BY 6-1393738-1
V42254-A6003-G137	5-1393738-7	SUPERSEDED BY 6-1393738-2
V42254-A6004-G109	5-1393738-9	
V42254-A6004-G115	6-1393738-0	
V42254-A6004-G125	6-1393738-1	
V42254-A6004-G137	6-1393738-2	
V42254-A6004-G150	6-1393738-3	
V42254-A6004-G209	6-1393738-4	SUPERSEDED BY 5-1393738-9
V42254-A6004-G215	6-1393738-5	OBSOLETE
V42254-A6004-G225	6-1393738-6	OBSOLETE
V42254-A6004-G309	1-1393739-9	
V42254-A6004-G315	6-1393738-7	
V42254-A6004-G325	2-1393739-0	
V42254-A6004-G337	2-1393739-1	SUPERSEDED BY 6-1393738-2
V42254-A6004-G350	2-1393739-2	SUPERSEDED BY 6-1393738-3
V42254-A6004-G409	6-1393738-8	OBSOLETE
V42254-A6004-G415	6-1393738-9	OBSOLETE
V42254-A6004-G437	7-1393738-1	OBSOLETE

THIS INFORMATION IS CONFIDENTIAL AND PROPRIETARY TO TYCO ELECTRONICS CORPORATION AND ITS WORLDWIDE SUBSIDIARIES AND AFFILIATES. IT MAY NOT BE DISCLOSED TO ANYONE, OTHER THAN TYCO ELECTRONICS PERSONNEL, WITHOUT WRITTEN AUTHORIZATION FROM TYCO ELECTRONICS CORPORATION, HARRISBURG, PENNSYLVANIA USA.

PROPRIETARY:



Tyco Electronics Corporation  
Oostkamp - Belgium



LOC DIMENSIONS  
GW IN MM

SCALE

WEIGHT

MATERIAL

DATE 30.08.88

NAME De Petter

DEP. PD Com P&SE

NAME

D-Sub Housing

shielded

TOLERANCE UNLESS  
SPECIFIED OTHERWISE

DWG NO.

SHT. 4+

V42254-A6000-G\*\*\*-\*-27

A4 SEE SHEET 1.

REV. CHANGE ORDER DATE APP. Customer Drawing: C 1393738-1

OF 6

1

2

3

4


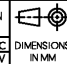
PROPRIETARY: THIS INFORMATION IS CONFIDENTIAL AND PROPRIETARY TO TYCO ELECTRONICS CORPORATION AND ITS WORLDWIDE SUBSIDIARIES AND AFFILIATES. IT MAY NOT BE DISCLOSED TO ANYONE, OTHER THAN TYCO ELECTRONICS PERSONNEL, WITHOUT WRITTEN AUTHORIZATION FROM TYCO ELECTRONICS CORPORATION, HARRISBURG PENNSYLVANIA, USA

V 4 2 2 5 4 - A 6 1 \* \* - L 1

Technical data		
	contact tube outer diameter ±0.1	for shield braiding outer diameter
04	4	2.0 to 2.7
05	5	2.8 to 3.7
06	6	3.8 to 4.7
07	7	4.8 to 5.7
08	8	5.8 to 6.7
09	9	6.8 to 7.7
10	10	7.8 to 8.7
11	11	8.8 to 9.7
12	12	9.8 to 10.7
13	13	10.8 to 11.7
14	14	11.8 to 12.7
15	15	12.8 to 13.7

Active part numbers. Contact Tyco Electronics for other configuration availability

Old Part Number	TE Part Number	
V42254-A6104-L1	3-1393561-2	OBSOLETE
V42254-A6105-L1	3-1393561-3	
V42254-A6106-L1	3-1393561-4	
V42254-A6107-L1	3-1393561-5	
V42254-A6108-L1	3-1393561-6	
V42254-A6109-L1	3-1393561-9	
V42254-A6110-L1	4-1393561-0	
V42254-A6111-L1	4-1393561-1	
V42254-A6112-L1	4-1393561-2	
V42254-A6113-L1	4-1393561-3	OBSOLETE
V42254-A6114-L1	4-1393561-4	OBSOLETE
V42254-A6115-L1	5-1393502-9	OBSOLETE

APPLICABLE SPEC:		FINISH	
 TYCO ELECTRONICS CORPORATION OOSTKAMP - BELGIUM		DIMENSIONS APPLY PLATING	
		SCALE	WEIGHT
 DIMENSIONS IN MM		MATERIAL	
DATE	30.08.88	NAME	
NAME	De Petter	D-Sub Housing	
DEP.	PD Com P&SE	accessories: contact tubes	
EC		DWG NO.	
TOLERANCE UNLESS SPECIFIED OTHERWISE		V42254-A6000-G***-*-27	
A4	SEE SHEET 1	SHT 5+	
REV	CHANGE ORDER	DATE	APP
			customer drawing number: C.1393738-1
			OF 6

PROPRIETARY: THIS INFORMATION IS CONFIDENTIAL AND PROPRIETARY TO TYCO ELECTRONICS CORPORATION AND ITS WORLDWIDE SUBSIDIARIES AND AFFILIATES. IT MAY NOT BE DISCLOSED TO ANYONE, OTHER THAN TYCO ELECTRONICS PERSONNEL, WITHOUT WRITTEN AUTHORIZATION FROM TYCO ELECTRONICS CORPORATION, HARRISBURG PENNSYLVANIA, USA

V 4 2 2 5 4 - A 6 2 \* \* - L \* \* \*



Technical Data			
		bushing inner diameter ±0.2	cable outer diameter
00	1)2)	/	/
05	3)	5	4.2 to 4.9
06	3)	6	5.0 to 5.9
07	3)	7	6.0 to 6.9
08	3)	8	7.0 to 7.9
09	3)	9	8.0 to 8.9
10	2)	10	9.0 to 9.9
11	2)	11	10.0 to 10.9
12	4)	12	11.0 to 11.9
13	4)	13	12.0 to 12.9
14	4)	14	13.0 to 13.9
15	4)	15	14.0 to 14.9

	contacts	colour
1	9 to 37	grey
50	50	grey
100	9 to 37	black
150	50	black

Active part numbers. Contact Tyco Electronics for other configuration availability

Old Part Number	TE Part Number	
V42254-A6200-L 1	4-1393561-5	
V42254-A6200-L 50	4-1393561-6	
V42254-A6200-L 100	5-1393502-1	OBSOLETE
V42254-A6200-L 150	5-1393502-2	OBSOLETE
V42254-A6205-L 1	4-1393561-7	
V42254-A6205-L 100	4-1393561-8	
V42254-A6206-L 1	4-1393561-9	
V42254-A6206-L 100	5-1393561-0	
V42254-A6207-L 1	5-1393561-1	
V42254-A6207-L 100	5-1393561-4	OBSOLETE
V42254-A6208-L 1	5-1393561-5	
V42254-A6208-L 100	5-1393561-6	
V42254-A6209-L 1	5-1393561-7	
V42254-A6209-L 100	5-1393561-8	
V42254-A6210-L 1	5-1393561-9	
V42254-A6210-L 50	6-1393561-0	
V42254-A6210-L 100	6-1393561-1	OBSOLETE
V42254-A6210-L 150	5-1393502-3	OBSOLETE
V42254-A6211-L 1	6-1393561-2	
V42254-A6211-L 50	6-1393561-3	
V42254-A6211-L 100	5-1393502-4	OBSOLETE
V42254-A6211-L 150	5-1393502-5	OBSOLETE
V42254-A6212-L 50	6-1393561-4	
V42254-A6212-L 150	5-1393502-6	OBSOLETE
V42254-A6213-L 50	6-1393561-5	
V42254-A6213-L 150	5-1393502-7	OBSOLETE
V42254-A6214-L 50	6-1393561-6	
V42254-A6214-L 150	5-1393502-8	OBSOLETE
V42254-A6215-L 50	8-1393501-5	OBSOLETE
V42254-A6215-L 150	6-1393561-7	OBSOLETE

- 4) only for 50 contacts
- 3) only for 9 to 37 contacts
- 2) for 9 to 50 contacts
- 1) Blank bushing

APPLICABLE SPEC.:		FINISH	
TYCO ELECTRONICS CORPORATION		DIMENSIONS APPLY	
OOSTKAMP - BELGIUM		PLATING	
		SCALE	
		WEIGHT	
DATE 30.08.88		MATERIAL	
NAME De Petter		D-Sub Housing	
DEP. PD Com P&SE		accessories: cable bushings	
EC		DWG NO. V42254-A6000-G***-*-27	
TOLERANCE UNLESS SPECIFIED OTHERWISE		SHT. 6-	
A4 SEE SHEET 1	REV. CHANGE ORDER	DATE	APP. customer drawing number: C 1393738-1
			OF 6