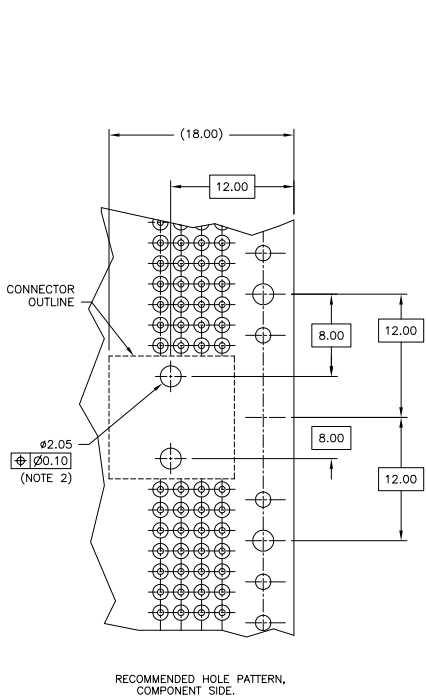


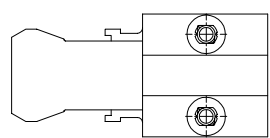
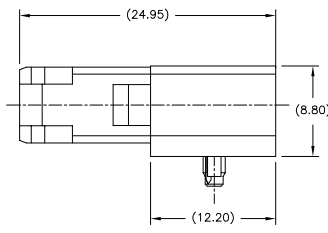
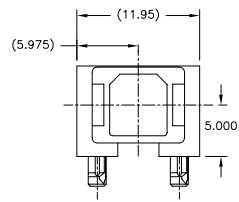
Tous droits strictement réservés. Reproduction ou communication à des tiers interdite sans autorisation écrite du propriétaire. Property of FCI. Droits de reproduction FCI.

All rights strictly reserved. Reproduction or issue to third parties in any form whatsoever is not permitted without written authority from the proprietor. Property of FCI. Copyright FCI.

PRODUCT NUMBER	STYLE	COLOR
94576-001LF NOTE 3	SC/PC	BLUE
94576-002LF NOTE 3	SC/APC	GREEN



RECOMMENDED HOLE PATTERN, COMPONENT SIDE.



- NOTES:
- 1 MATERIAL: POLYESTER, 15 % GLASS FILLED.
  - 2 INDICATED HOLES ARE UNPLATED.
  - 3 THIS PRODUCT WITH "LF" SUFFIX MEETS EUROPEAN UNION DIRECTIVES AND OTHER COUNTRY REGULATIONS AS DESCRIBED IN GS-22-008. LF INDICATES PRODUCT IS LEAD FREE.
  - 4 THIS PRODUCT IS NOT INTENDED TO BE EXPOSED TO A MANUFACTURING SOLDER PROCESS.

mat'l. code				tolerances unless otherwise specified				CUSTOMER COPY		FCI www.fciconnect.com	
NOTE 1				NOMINALS ONLY				projection		title	
ltr	ecn no	dr	date	UNLESS NOTED				MM		CMP, SC-SMP HSG	
A	V40892	SCS	940517	linear					product family FIBER OPTICS		
B	V41287	SCS	940907						size dwg no		
C	V10002	JJK	1/10/01	angles				94576		code -	
D	V11448	JJK	8/23/02	dr	STU STONER	940405		scale 1:1		sheet 1 of 1	
E	V11477	JJK	9/18/01	engr	R. DOUTRICH	940405		A			
F	V21044	JJK	6/13/02	chr	STU STONER	940405					
G	V06-0783	DAI	2006-08-29	appd	STU STONER	940405					
sheet index	revision										
	sheet	1									